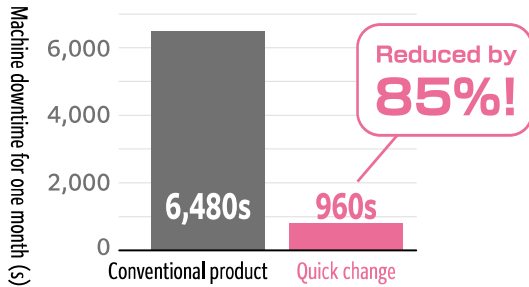


Time-saving effect of quick change adapter...

Reduces setup time by 85%!

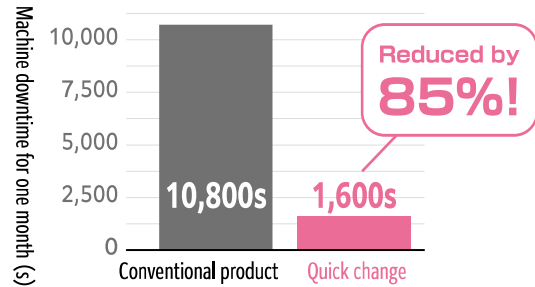
Example of reduced setup time ①

Workpiece: Parts
Tools used: 2 drills, 1 center drill
Number of setups: 2 times/day



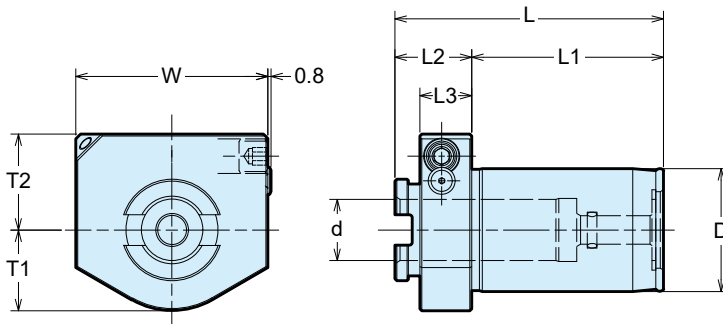
Example of reduced setup time ②

Workpiece: Parts
Tools used: 1 center drill
Number of setups: 10 times (tool change once)/day

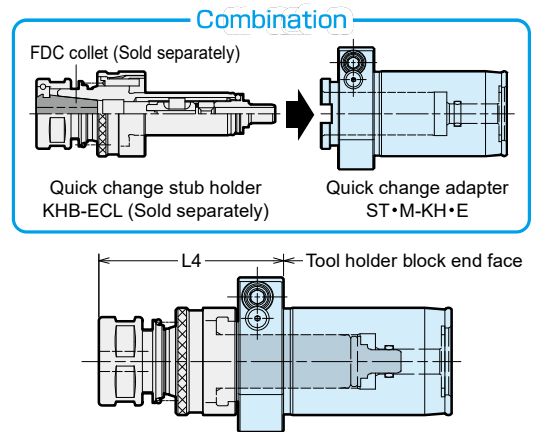


Dimension

NEW Quick Change Adapter for CNC Lathe ST·M·KH·E



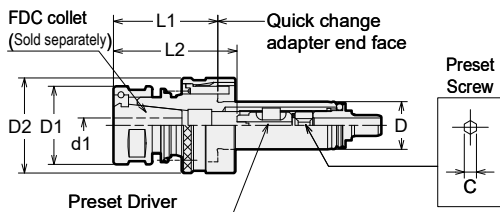
Dimensions when combined with holders



- ST-M-KH-E is for CNC lathes only.
- Use a tool post with an inner diameter within the H7 tolerance range.

Code	Model	D	d	L	L1	L2	L3	W	T1	T2	Wrench (Sold separately)	Model of KHB-ECL	L4	Maximum coolant pressure
0480 10321600	ST32M-KH16E	32	16	70	50	20	13.5	50	21	25	L-4T	KHB-16ECL	55	2MPa
0480 10322200	ST32M-KH22E	32	22	70	50	20	13.5	50	21	25		KHB-22ECL	55	
0480 10401600	ST40M-KH16E	40	16	75	53	22	15.5	55	24.5	27.5	L-5T	KHB-16ECL	57	
0480 10402200	ST40M-KH22E	40	22	75	53	22	15.5	55	24.5	27.5		KHB-22ECL	57	
0480 10402500	ST40M-KH25E	40	25	75	53	22	15.5	55	24.5	27.5		KHB-25ECL	57	

NEW Quick Change Stub Holder for CNC Lathe KHB-ECL (Sold separately)



Code	Model	D	D1	D2	L1	C	Adjustment amount L2	Nut	Sold separately		
									Collet	d1	Spanner
3058 6000000	KHB-16ECL	16	26	32	35	4	29 ~ 41	HDP-09	FDC-09	3.0 ~ 9.0	S-1L
3058 2000000	KHB-22ECL	22	32	38	35	5	35 ~ 57	HDP-12	FDC-12	3.0 ~ 12.0	S-3L
3058 5000000	KHB-25ECL	25	36	44	35	6	36 ~ 55	HDP-16	FDC-16	6.0 ~ 16.0	S-4L

- KHB-ECL is for quick change adapters only.
- Collets and spanners must be ordered separately.
- Use FDC-OH (for tools with coolant holes) or FDC-C (for collet through) for center through coolant supply.
- Check the QR code for a list of collet sizes. You can download them from the "Dimensions table" tab at the link.

