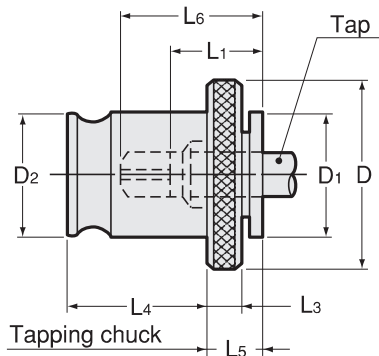


QUICK CHANGE TAP ADAPTER

WE Quick Change

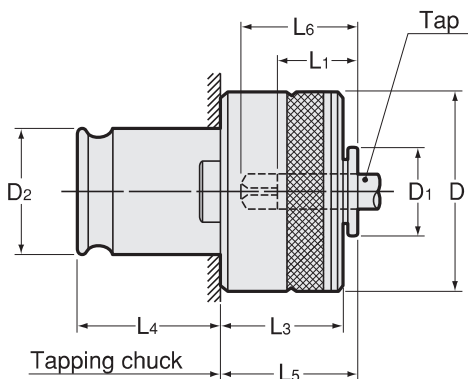
S Safety Torque

N Length Adjustment



WE

Model	Chck Size	D	D1	D2	L1	L3	L4	L5	kg
WE0	0	22	12.5	13	15	4	19.5	7	0.03
WE1	1/32	30	19	19	17	4	21.5	7	0.06
WE40	40	40	25	26	30	5	32	13	0.12
WE2	2	48	30	31	30	5	35	11	0.25
WE3	3	70	47	48	44	6	55.5	14	0.8
WE4	4	90	60	60	71	13	63	42	



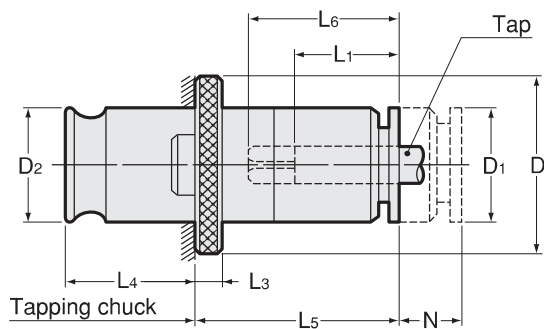
WES

WE + S

Model	Chck Size	D	D1	D2	L1	L3	L4	L5	kg
WES0B	0	23	12.5	13	15	20	19.5	21	0.06
WES1B	1/32	32	19	19	17	25	21.5	25	0.15
WES40B	40	40	25	26	30	27	32	30	0.3
WES2B	2	50	30	31	30	31	35	33	0.6
WES3B	3	72	47	48	44	41	55.5	45	1.5
WES4B	4	95	60	60	71	61	63	68	

In addition to the basic 4 models, wide variety of models (extended size, enlarged size, R type for short shank tap etc.) are available. For these and other advanced tap adapters please contact NT USA for details.

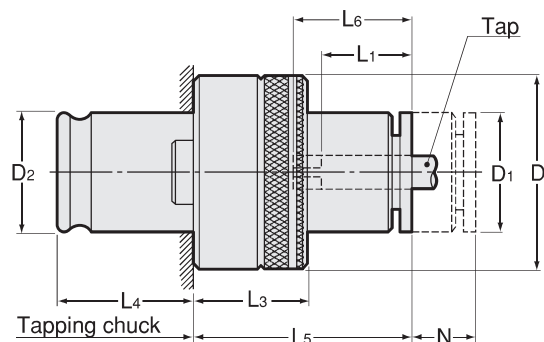
1. see page x-y for ANSI JIS DIN and other standard for tap sizes.



WEN

WE + N

Model	Chck Size	Adjustable Length N	D	D1	D2	L1	L3	L4	L5	kg
WEN0	0	8	22	12.5	13	15	4	19.5	29	0.05
WEN1	1/32	10	30	19	19	17	4	21.5	34	0.2
WEN40	40	15	40	25	26	30	5	32	53	0.4
WEN2	2	15	48	30	31	30	5	35	60	0.5
WEN3	3	25	70	48	48	44	6	55.5	83	1.8



WESN

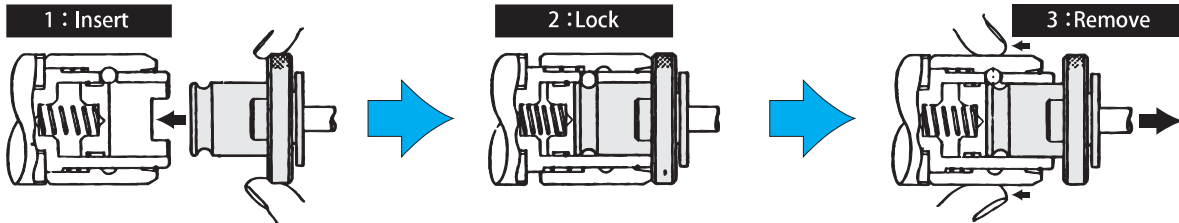
WE + S + N

Model	Chck Size	Adjustable Length N	D	D1	D2	L1	L3	L4	L5	kg
WESN0B	0	8	23	12.5	13	15	20	19.5	28	0.1
WESN1B	1/32	10	32	19	19	17	25	21.5	33	0.2
WESN40B	40	15	40	25	26	30	27	32	53	0.4
WESN2B	2	15	50	30	31	30	31	35	59	0.7
WESN3B	3	25	72	48	48	44	41	55.5	82.5	2.1

In addition to the basic 4 models, wide variety of models (extended size, enlarged size, R type for short shank tap etc.) are available.

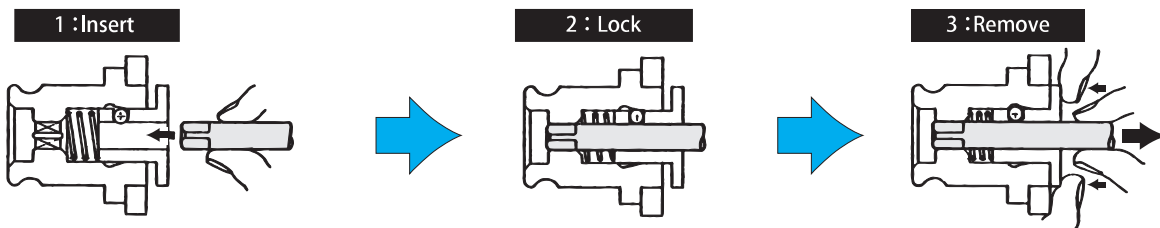
WE : Quick Change

Tapping chuck and tapping adapter



- 1 : Simply insert tap adapter into tapping chuck.
- 2 : Tapping chuck and tap adapter are connected firmly.
- 3 : Push down on operation sleeve of tapping chuck while removing tap adapter.

Tapping adapter and Tap



- 1 : Insert tap into bottom of tap adapter, and rotate tap manually to connect them firmly.
- 2 : Tap and adapter are connected firmly.
- 3 : Push down on ball bush while removing tap.

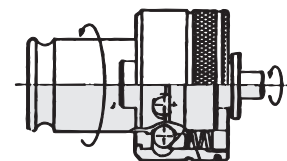
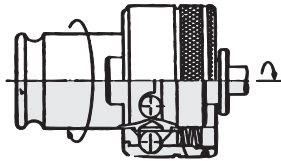
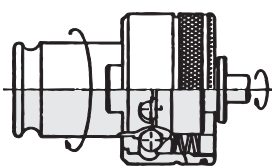
S : Safety torque

Safe torque device activates to prevent breakage tap when torque more than fixed amount is applied to tap. (Use with a tapper equipped with axial compensation mechanism.)

Normal operation (Normal machining)

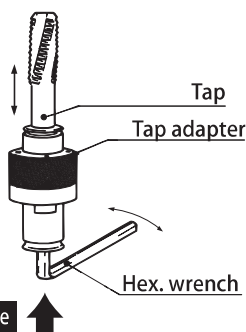
Empty operation (Abnormal machining torque)

Reverse operation (Torque device doesn't move in the reverse direction)



When using left handed tap adapter, please specify.

N : Length adjustment



Insert hex. wrench into bottom of tap adapter and turn to adjust tool length.

Tap adapter with tool adjustment mechanism can be recommended for following conditions.

- 1. Tool adjustment with prestting gauge.
- 2. When tap length changes due to re-grinding.
- 3. When you do not want to use N/C machine tool compensation function.

QUICK CHANGE TAP ADAPTER

Unified JIS and ISO available sizes

Unified JIS Tap adaptors

Tap Shank Dia. mm	Drive Square Sq. mm	Tap Shank Dia. Inch	Drive Square Sq. Inch	Unified	WE0 WES0B WEN0 WESN0B	WE1 WES1B WEN1 WESN1B	WE40 WES40B WEN40 WESN40B	WE2 WES2B WEN2 WESN2B	WE3 WES3B WEN3 WESN3B
6.0	4.5	0.236	0.177	U1/4	U1/4J	U1/4J	U1/4J		
6.1	5.0	0.240	0.197	U5/16	U5/16J	U5/16J	U5/16J		
7.0	5.5	0.276	0.217	U3/8	U3/8J	U3/8J	U3/8J	U3/8J	
8.0	6.0	0.315	0.245	U7/16		U7/16J	U7/16J	U7/16J	
9.0	7.0	0.354	0.276	U1/2		U1/2J	U1/2J	U1/2J	
10.5	8.0	0.413	0.315	U9/16		U9/16J	U9/16J	U9/16J	
12.0	9.0	0.472	0.354	U5/8			U5/8J	U5/8J	
14.0	11.0	0.551	0.433	U3/4			U3/4J	U3/4J	
17.0	13.0	0.669	0.512	U7/8				U7/8J	
20.0	15.0	0.787	0.591	U1					U1J
22.0	17.0	0.866	0.669	U1-1/8					U1-1/8J
24.0	19.0	0.945	0.748	U1-1/4					U1-1/4J
26.0	21.0	1.024	0.827	U1-3/8					U1-3/8J

ISO Tap adaptors

Tap Shank Dia. mm	Drive Square Sq. mm	Tap Shank Dia. Inch	Drive Square Sq. Inch	Tap Size ISO	Tap Size ISO	WE0 WES0B WEN0	WE1 WES1B WEN1	WE2 WES2B WEN2
2.5	2.0	0.098	0.079	M3.5	M2	M2	M2	
2.8	2.24	0.110	0.088	M2.5	M2.2	M2.5	M2.5	
3.15	2.5	0.124	0.098	M3	M4	M3, M4	M3	
4.0	3.15	0.157	0.124	M4	M5	M4, M5	M4	
4.5	3.55	0.177	0.140	M5	M6		M6	
5.0	4.0	0.197	0.157	M5		M5	M5	
6.3	5.0	0.248	0.197	M6	M8	M6, M8	M6	
8.0	6.3	0.315	0.248	M10	M11		M8	
9.0	7.1	0.354	0.280	M12	M9		M12	M12
11.2	9.0	0.441	0.354	M14			M14	M14
14.0	11.2	0.551	0.441	M20				M20
16.0	12.5	0.630	0.492	M22				M22
18.0	14.0	0.709	0.551	M24				M24

Ordering Example - Unified

WE1 **U2/8J** **JIS**
Adapter size Tap size Standard

Ordering Example - ISO

WE1 **M6** **ISO**
Adapter size Tap size Standard

QUICK CHANGE TAP ADAPTER

DIN 371 and DIN 376 available sizes

DIN 371 Tap adaptor

Tap Shank Dia. Mm	Drive Square Sq. mm	Tap Shank Dia. Inch	Drive Square Sq. Inch	Tap Size DIN371	Tap Size DIN371	WE0 WES0B WEN0 WESN0B	WE1 WES1B WEN1 WESN1B	WE2 WES2B WEN2 WESN2B
3.5	2.7	0.138	0.106	M3		M3	M3	
4.0	3.0	0.157	0.118	M3.5			M3.5	
4.5	3.4	0.177	0.134	M4		M4	M4	
6.0	4.9	0.236	0.193	M5	M6	M5, M6	M5, M6	M5, M6
8.0	6.2	0.315	0.244	M8		M8	M8	M8
10.0	8.0	0.394	0.315	M10			M10	M10

DIN 376 Tap adaptor

Tap Shank Dia. Mm	Drive Square Sq. mm	Tap Shank Dia. Inch	Drive Square Sq. Inch	Tap Size DIN376	Tap Size DIN376	WE1 WES1B WEN1 WESN1B	WE2 WES2B WEN2 WESN2B	WE3 WES3B WEN3 WESN3B	WE4 WES4B WEN4 WESN4B
6.0	4.9	0.236	0.193	M8		M8	M8		
7.0	5.5	0.276	0.217	M10		M10	M10		
9.0	7.0	0.354	0.276	M12		M12	M12		
11.0	9.0	0.433	0.354	M14		M14	M14	M14	
12.0	9.0	0.472	0.354	M16			M16	M16	
14.0	11.0	0.551	0.433	M18			M18	M18	
16.0	12.0	0.630	0.472	M20			M20	M20	
18.0	14.5	0.709	0.571	M22	M24			M22, M24	M22, M24
20.0	16.0	0.787	0.630	M27				M27	M27
22.0	18.0	0.866	0.709	M30				M30	M30
25.0	20.0	0.984	0.787	M33				M33	M33
28.0	22.0	1.102	0.866	M36				M36	M36
32.0	24.0	1.260	0.945	M39					M39
36.0	29.0	1.417	1.142	M45	M48				M45

Ordering Example - Unified

WE1 **M12** **DIN-376**
 Adapter size Tap size Standard

QUICK CHANGE TAP ADAPTER

ANSI and JIS available sizes

ANSI Tap Adaptors

Tap Shank Dia. mm	Drive Square Sq. mm	Tap Shank Dia. Inch	Drive Square Sq. Inch	Tap Size ANSI	Tap Size ANSI	WE0 WES0B WEN0 WESN0B	WE1 WES1B WEN1 WESN1B	WE2 WES2B WEN2 WESN2B	WE3 WES3B WEN3 WESN3B	WEN4
3.6	2.8	0.141	0.110	#0-6		#6	#6			
4.3	3.4	0.168	0.131	#8	5/32	#8	#8			
5.0	3.9	0.194	0.152	#10	3/16	#10	#10			
5.6	4.2	0.220	0.165	#12	7/32	#12	#12			
6.5	4.9	0.255	0.191	#14	1/4	1/4	1/4	1/4		
8.0	6.0	0.313	0.234	1/8 SPT			1/8 SPT			
8.1	6.1	0.318	0.238	5/16		5/16	5/16	5/16		
8.3	6.2	0.323	0.242	7/16			7/16	7/16		
9.4	7.0	0.367	0.275	1/2			1/2	1/2		
9.7	7.3	0.381	0.286	3/8			3/8	3/8		
10.9	8.2	0.429	0.322	9/16			9/16	9/16		
11.1	8.4	0.437	0.328	1/8 LPT			1/8 LPT	1/8 LPT		
12.2	9.2	0.480	0.360	5/8				5/8		
13.8	10.4	0.542	0.406	11/16				11/16		
14.3	10.7	0.562	0.421	1/4 PT				1/4 PT		
15.0	11.3	0.590	0.442	3/4				3/4		
16.6	12.5	0.652	0.489	13/16				13/16	13/16	
17.8	13.3	0.697	0.523	7/8				WES2 7/8	7/8	7/8
19.4	14.5	0.760	0.570	15/16					15/16	15/16
20.4	15.3	0.800	0.600	1					1"	1"
22.8	17.1	0.896	0.672	1-1/8					1-1/8	1-1/8
26.0	19.5	1.021	0.766	1-1/4					1-1/4	1-1/4
28.2	21.2	1.108	0.831	1-3/8					1-3/8	1-3/8
31.4	23.5	1.233	0.925	1-1/2						1-1/2
36.4	27.3	1.430	1.072	1-3/4						1-3/4

JIS Tap adaptor

Tap Shank Dia. Mm	Drive Square Sq. mm	Tap Shank Dia. Inch	Drive Square Sq. Inch	Tap Size JIS	Tap Size JIS	WE0 WES0B WEN0 WESN0B	WE1 WES1B WEN1 WESN1B	WE40 WES40B WEN40 WESN40B	WE2 WES2B WEN2 WESN2B	WE3 WES3B WEN3 WESN3B
4.0	3.2	0.157	0.126	M3		M3J	M3J			
5.0	4.0	0.197	0.157	M4		M4J, 4.5J	M4J, 4.5J			
5.5	4.5	0.217	0.177	M5		M5J	M5J			
6.0	4.5	0.236	0.177	M6		M6J	M6J	M6J		
6.2	5.0	0.244	0.197	M7	M8	M7, M8J	M7, M8J	M7, M8J	M8J	
7.0	5.5	0.276	0.217	M9	M10	M9J, (M10J)	M9J, (M10J)	M9J, (M10J)	M9J, (M10J)	
8.0	6.0	0.315	0.236	M11			M11J	M11J	M11J	
8.5	6.5	0.335	0.256	M12			M12J	M12J	M12J	
10.5	8.0	0.413	0.315	M14	M15		M14, 15J	M14, 15J	M14, 15J	
12.5	10.0	0.492	0.394	M16					M16J	
13.0	10.0	0.512	0.394	M17					M17J	
14.0	11.0	0.551	0.433	M18					M18J	
15.0	12.0	0.591	0.472	M20					M20J	
17.0	13.0	0.669	0.512	M22					M22J	
20.0	15.0	0.787	0.591	M26	M27					M26, 27J
21.0	17.0	0.827	0.669	M28						M28J
23.0	17.0	0.906	0.669	M30						M30J
24.0	19.0	0.945	0.748	M32						M32J
25.0	19.0	0.984	0.748	M33						M33J
26.0	21.0	1.024	0.827	M34						M34, 35J
28.0	21.0	1.102	0.827	M36	M38					M36, 38J

Tap Size in b are for light tapping only.

Ordering Example - Unified

WE1 **7/16** **ANSI**
Adapter size Tap size Standard

Ordering Example - ISO

WE1 **M11J** **JIS**
Adapter size Tap size Standard