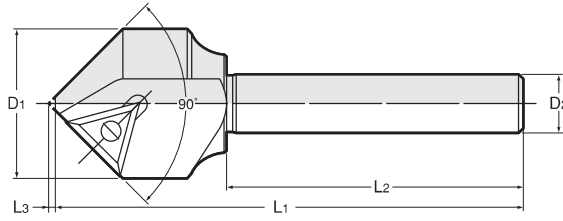


Chamfering Holder

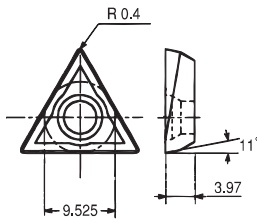


Code	Model	Chamfering dia (φ)	Dimensions						Insert No.
			D1	D2	L1	L2	L3	kg	
2620 00251290	C25 -ST12 -90°	5 ~ 25	25	12	95	60	1.6	0.11	No.504 No.510
2620 00401290	C40 -ST12 -90°	20 ~ 40	40	12	95	60	8.4	0.24	
2620 00501290	C50 -ST12 -90°	30 ~ 50	50	12	95	60	13.9	0.38	

Insert for chamfering cutter is specially designed and available only from NT. (1set=10pcs.)
Other commercialized products cannot be used.
Wrench and screw are included.

Accessories

Indexable inserts



Steel, Cast iron

Code	Model	—
2624 00050410	No.504	14,080

Aluminum, Mild steel

Code	Model	—
2624 00050510	No.510	16,940

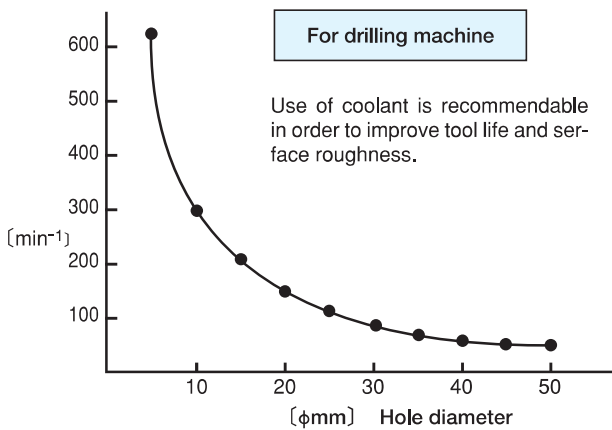
Wrench

Code	Model
2625 00000015	XF-15

Clamp screw

Code	Model
2625 00115672	CB1-3507

Recommended cutting conditions



When using this insert with machining center, please adjust cutting speed between 40 and 100m/min.

Ordering Example

C25 - ST 12 - 90°
 Max. chamfering dia. Shank size Angle
 Straight shank

Chamfering Series



Application	Chamfering drill	New chamfering drill	Chamfering holder
Deburring and chamfering for soft and ductile material.	○		○
Deburring, chamfering and countersinking for hard and in-ductile material		○	○
Chamfering and deburring with drilling machines.	○	○	○

Features	Chamfering drill	New chamfering drill	Chamfering holder
Various chamfering diameters with only one tool.	○	○	○
Smooth finish without chatter.	○	○	○
Easy positioning	○	○	○
Special gold coating			
Cobalt high speed steel used		○	
Indexable inserts reduces cutting tool costs. (No need for re-grinding.)			○
2 types (for hard and soft material) are available.			○