

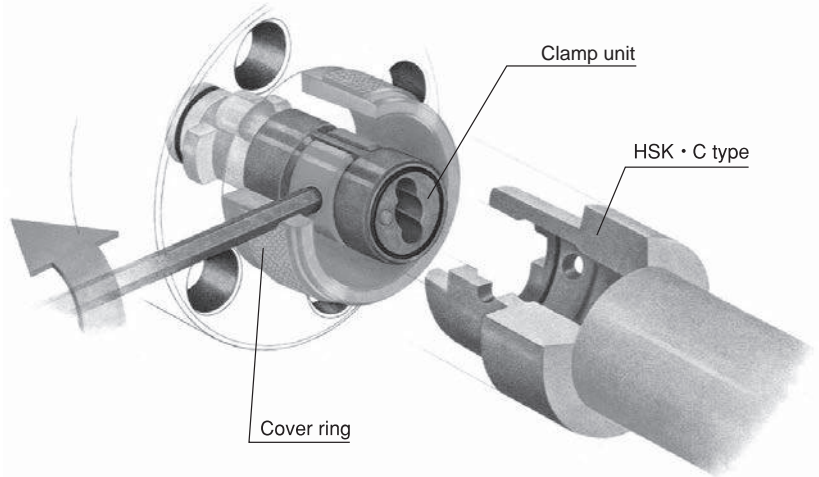
# MN5523·J

## Manual Flange

### NT-MAPAL Clamping unit

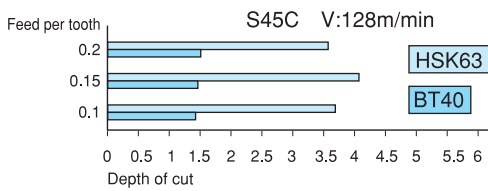
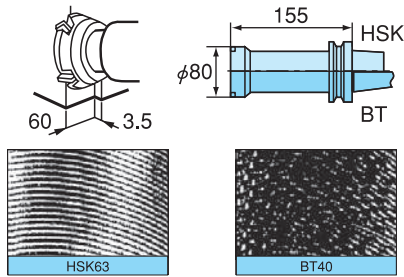
#### How to install

1. Insert the holder into the spindle.
2. Turn the cover ring.
3. Insert the wrench into the clamp bolt and turn it clockwise.
4. Remove the wrench and cover the hex hole for the wrench by turning the cover ring.

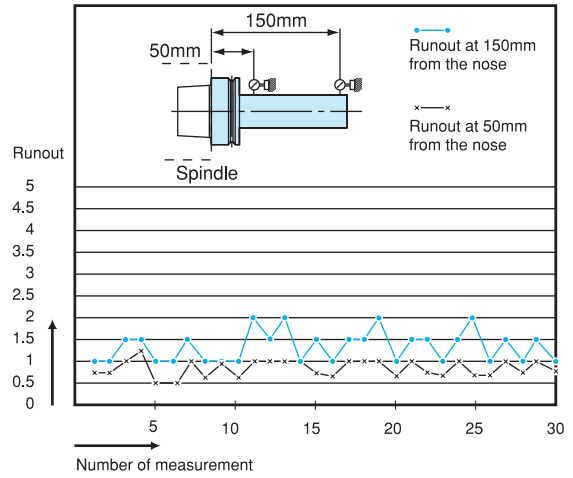


### Feature

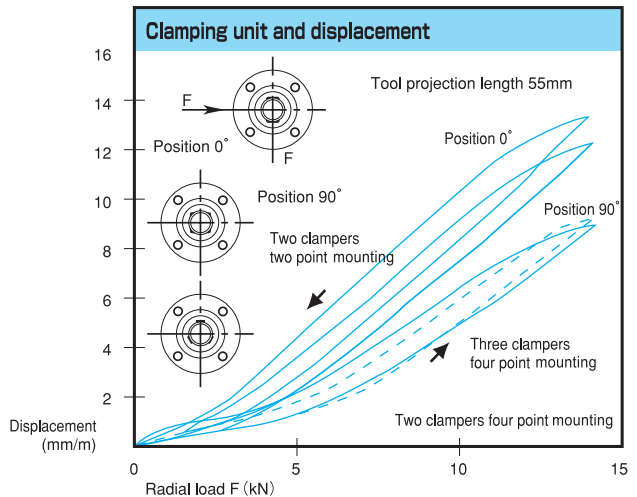
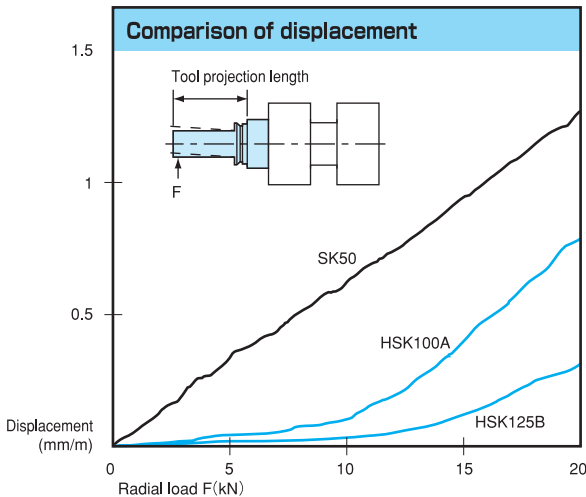
#### Ultimate dynamic rigidity



#### High repetitive accuracy



#### Excellent static rigidity against bending load



BT  
CAT  
AHO  
HSK-A/E/F/C  
HSK-T  
UTS  
Specialized Machine  
Related Equipment  
Bush & Chamfering Drill

Milling Chuck  
Collet Holder

"R-Zero Holder

Hydraulic Chuck

Shrink Fit

Tapping Chuck

Arbors

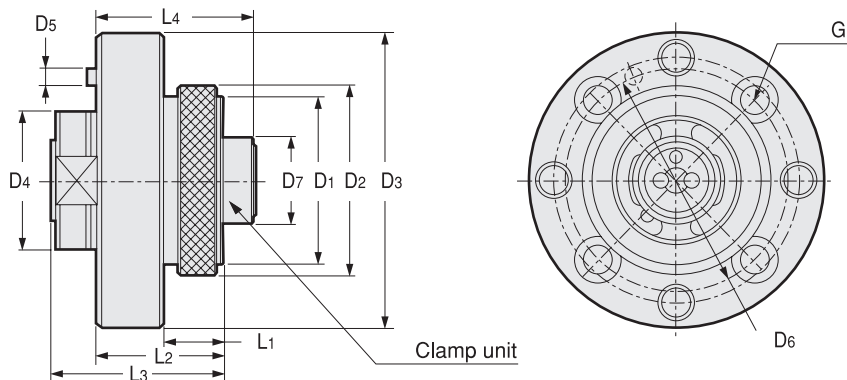
Function Holder

HSK-E

HSK-F

HSK-C

Tool Shank Dimensions



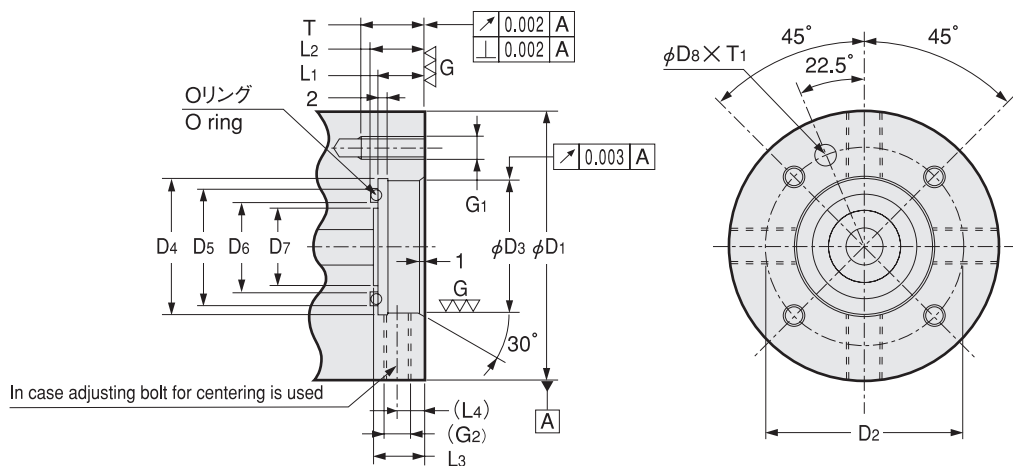
Code	Model	D1	D2	D3	D4 <sub>g6</sub>	D5	D6	D7	L1	L2	L3	L4	G	Attached Clamp unit	Adapted HSK shank
5500 55230005	<b>MN5523 -05 -J</b>	32	37	60	30	3.5	44	16.6	13	26	36	33.6	M5	KS32-05	HSK32C
5500 55230006	<b>-06 -J</b>	40	45	70	35	4	53	20.6	15	30	41	37.6	M6	KS40-06	HSK40C
5500 55230007	<b>-07 -J</b>	50	55	80	40	4	63	25.6	18	35	46	44.6	M6	KS50-07	HSK50C
5500 55230008	<b>-08 -J</b>	63	70	100	50	4	79	33.6	22	43	55	52.6	M8	KS63-08	HSK63C
5500 55230009	<b>-09 -J</b>	80	87	117	60	5	96	41.6	29	50	63	62.1	M8	KS80-09	HSK80C
5500 55230010	<b>-10 -J</b>	100	110	140	80	5	119	52.6	42	70	83	82	M10	KS100-10	HSK100C

For HSK · C type only.

Ordering Example

**MN5523 - 05 - J**  
Size

Spindle Dimensions for MN5523 · J



Size	D1	D2 <sub>±0.1</sub>	D3 <sub>H7</sub>	D4	D5	D6	D7	D8	O ring	L1 <sub>+0.2 +0.1</sub>	L2 <sub>+0.1 0</sub>	L3	(L4)	G1	(G2)	T	T1 <sub>+0.5 0</sub>
<b>HSK32</b>	60	44	30 <sup>+0.021 0</sup>	30.5	26	20.3	—	4.5	P22	10	11.8	—	6	M5 × 0.8	M6 × 1	11	3
<b>HSK40</b>	70	53	35 <sup>+0.025 0</sup>	35.5	32	23.6	20	5.0	P26	10	12.7	12	6	M6 × 1	M6 × 1	14	3.5
<b>HSK50</b>	80	63	40 <sup>+0.025 0</sup>	40.5	37	28.6	23	5.0	P31	10	12.7	12	6	M6 × 1	M6 × 1	14	3.5
<b>HSK63</b>	100	79	50 <sup>+0.025 0</sup>	50.5	37	28.6	—	5.0	P31	12	14.7	—	8	M8 × 1.25	M8 × 1	15	3.5
<b>HSK80</b>	117	96	60 <sup>+0.030 0</sup>	60.5	50	41.6	28	6.0	P44	12	14.7	14	8	M8 × 1.25	M8 × 1	15	4.5
<b>HSK100</b>	140	119	80 <sup>+0.030 0</sup>	80.5	56	47.6	—	6.0	P50	13	15.7	—	8	M10 × 1.5	M10 × 1	18	4.5