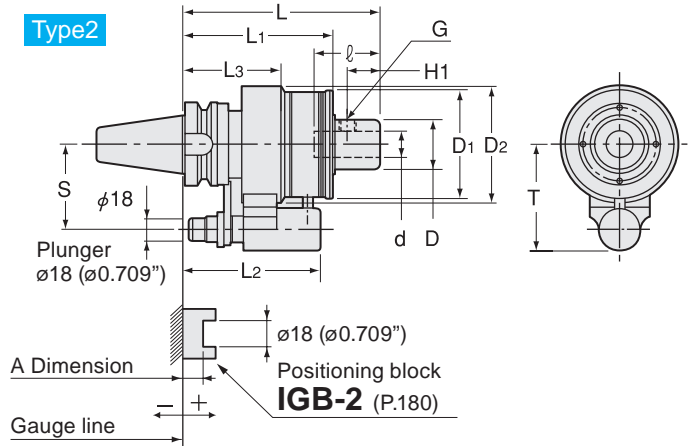
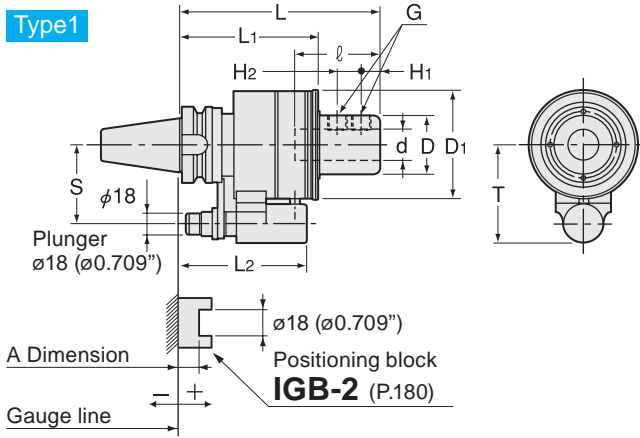


# SL-CS

Side Lock Holder (Coolant Inducer)



- BT
- CAT
- AHO
- HSK-A/E/F/C
- HSK-T
- UTS
- Specialized Machine
- Related Equipment
- Bush & Chamfering Drill

Milling Chuck

Collet Holder

"R" Zero Holder

Hydraulic Chuck

Shrink Fit

Tapping Chuck

Arbors

Function Holder

Turning Tool

Retention Stud

Tool Shank Dimensions

## Metric Sizes

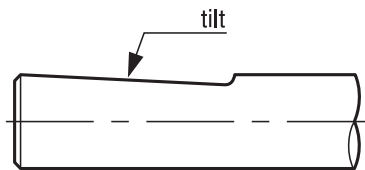
Unit : Metric

Code	Model	Type	d	L	L1	D	D1	D2	l	L2	L3	T	H1	H2	G	S	MAX min <sup>-1</sup>	Max. Coolant	Seal unit	kg
2980 0316150 ※	BT40 -SL16 -150CS- ※	2	16	150	114	38	82	89	48	105	75	81	25	—	M12	65	6,000	2MPa	CS-2	4.7
2980 0320150 ※	BT40 -SL20 -150CS- ※	2	20	150	114	38	82	89	50	105	75	81	25	—	M12	65	6,000	2MPa	CS-2	4.7
2980 0325165 ※	BT40 -SL25 -165CS- ※	1	25	165	114	48	90	—	56	105	—	81	15	20	M16	65	5,000	2MPa	CS-3	5.2
2980 0332180 ※	BT40 -SL32 -180CS- ※	1	32	180	128	58	100	—	60	117	—	81	15	20	M16	65	4,000	2MPa	CS-4	6.5
2980 0516165 ※	BT50 -SL16 -165CS- ※	2	16	165	123	38	82	89	48	114	84	96	25	—	M12	80	6,000	2MPa	CS-2	8.0
2980 0520165 ※	BT50 -SL20 -165CS- ※	2	20	165	123	38	82	89	50	114	84	96	25	—	M12	80	6,000	2MPa	CS-2	7.9
2980 0525180 ※	BT50 -SL25 -180CS- ※	1	25	180	123	48	90	—	56	114	—	96	15	20	M16	80	5,000	2MPa	CS-3	8.5
2980 0532180 ※	BT50 -SL32 -180CS- ※	1	32	180	125	58	100	—	60	114	—	96	15	20	M16	80	4,000	2MPa	CS-4	9.4
2980 0540180 ※	BT50 -SL40 -180CS- ※	1	40	180	125	90	100	—	70	114	—	96	15	25	M16	80	4,000	2MPa	-	10.6

- When ordering, please specify the plunger number(No.1~No.5).
- Plunger is adjustable. Please refer to a chart on the right.
- Please return your coolant holder ( BT50-SL40 only ) to us through your dealer for seal unit replacement.

### Ordering Example

**BT50 - SL 16 - 165 CS - 1**  
 Shank size      I.D. (d)      Projection length (L)      Plunger No.

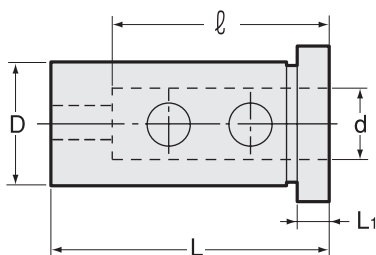


Please contact our engineering staff if flats are tilted.

### Plunger table

Model	Plunger No. A				
	No.1	No.2	No.3	No.4	No.5
BT40-SL16	+20 ~ +10.1	+10 ~ +0.1	0 ~ -9.9	-10 ~ -19.9	-20 ~ -29.9
BT40-SL20	+20 ~ +10.1	+10 ~ +0.1	0 ~ -9.9	-10 ~ -19.9	-20 ~ -29.9
BT40-SL25	+20 ~ +10.1	+10 ~ +0.1	0 ~ -9.9	-10 ~ -19.9	-20 ~ -29.9
BT40-SL32	+33 ~ +23.1	+23 ~ +13.1	+13 ~ +3.1	+3 ~ -6.9	-7 ~ -16.9
BT50	+28 ~ +18.1	+18 ~ +8.1	+8 ~ -1.9	-2 ~ -11.9	-12 ~ -21.9

## Reduction sleeve for CSL

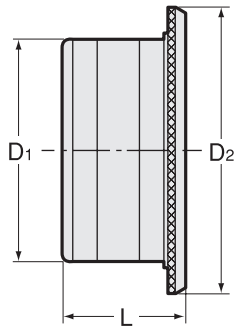


Code	Model	d	D	l	L	L1	kg
2504 01002016	CSL20 -16	16	20	48	55.5	5.5	0.1
2504 01002516	CSL25 -16	16	25	48	61.5	5.5	0.2
2504 01002520	CSL25 -20	20	25	50	61.5	5.5	0.2
2504 01003216	CSL32 -16	16	32	48	65.5	5.5	0.3
2504 01003220	CSL32 -20	20	32	50	65.5	5.5	0.3
2504 01003225	CSL32 -25	25	32	56	65.5	5.5	0.2
2504 01004016	CSL40 -16	16	40	48	75.5	5.5	0.7
2504 01004020	CSL40 -20	20	40	50	75.5	5.5	0.7
2504 01004025	CSL40 -25	25	40	56	75.5	5.5	0.6
2504 01004032	CSL40 -32	32	40	60	75.5	5.5	0.6

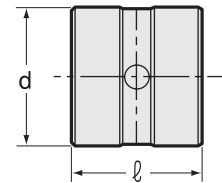
## Seal Unit

When replacing seal unit, please purchase both body and seal sleeve.

Seal unit body



Seal sleeve



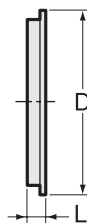
Unit : Metric (inch)

Code	Model	Seal unit body			Seal sleeve	
		D1	D2	L	d	l
2984 00000001	<b>CS-1</b>	56 (2.205)	71 (2.795)	31 (1.220)	35 (1.378)	33 (1.299)
2984 00000002	<b>CS-2</b>	67 (2.638)	82 (3.228)	31 (1.220)	45 (1.772)	33 (1.299)
2984 00000003	<b>CS-3</b>	75 (2.953)	90 (3.543)	31 (1.220)	55 (2.165)	33 (1.299)
2984 00000004	<b>CS-4</b>	85	100	31	65	33

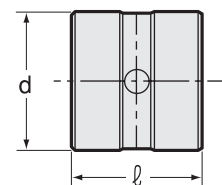
Seal unit body and seal sleeve are made as one unit.

When replacing 2 seals only, please purchase a seal set as shown below.

Seal



Seal sleeve



Unit : Metric (inch)

Code	Model	D	Seal		d	Seal sleeve	
			L	Qty		l	Qty
2984 10000001	<b>CS-1P</b>	47 (1.850)	4.8 (0.189)	2	35 (1.378)	33 (1.299)	1
2984 10000002	<b>CS-2P</b>	57 (2.244)	4.8 (0.189)	2	45 (1.772)	33 (1.299)	1
2984 10000003	<b>CS-3P</b>	67 (2.638)	4.8 (0.189)	2	55 (2.165)	33 (1.299)	1
2984 10000004	<b>CS-4P</b>	77	4.8	2	65	33	1

1.2 seals and 1 seal sleeve are made as one unit.

2. Refer to "How to replace seal unit" in the instruction manual.