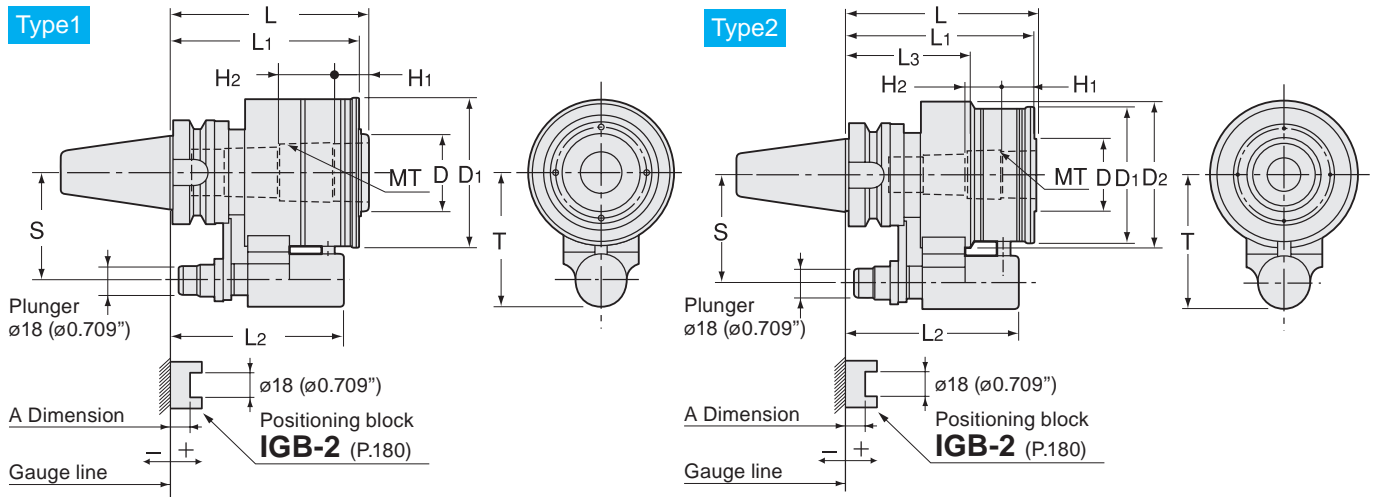


MT-CS

Morse Taper Holder (Coolant Inducer)



Metric Sizes

Unit : Metric

Code	Model	Type	MT	L	L1	L2	L3	D	D1	D2	T	H1	H2	S	MAX min ⁻¹	Max. Coolant	Seal unit	kg
2980 1303115 ※	BT40 -MT3 -115CS- ※	2	3	115	114	105	75	45	82	89	81	21	22	65	6,000	2MPa	CS-2	3.3
2980 1304120 ※	BT40 -MT4 -120CS- ※	1	4	120	114	105	—	48	90	—	81	21	34	65	5,000	2MPa	CS-3	3.4
2980 1503125 ※	BT50 -MT3 -125CS- ※	2	3	125	123	114	84	45	82	89	96	21	22	80	6,000	2MPa	CS-2	6.4
2980 1504135 ※	BT50 -MT4 -135CS- ※	1	4	135	123	114	—	48	90	—	96	21	34	80	5,000	2MPa	CS-3	6.8
2980 1505135 ※	BT50 -MT5 -135CS- ※	1	5	135	125	114	—	58	100	—	96	28	40	80	4,000	2MPa	CS-4	7.2

1. When ordering, please specify the plunger number(No.1~No.5).
2. Plunger is adjustable. Please refer to a chart on the right.
3. Seal unit can be replaced by customer.

Ordering Example

BT50 - MT4 - 120 CS - 1
 Shank size MT4 Projection length (L) Plunger No.

Plunger table

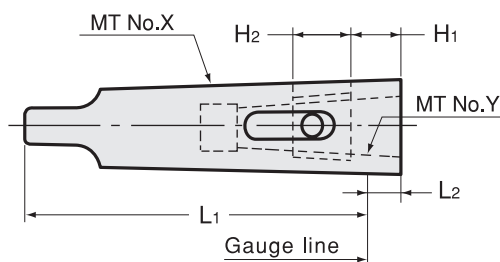
Model	Plunger No. A				
	No.1	No.2	No.3	No.4	No.5
BT40	+20 ~ +10.1	+10 ~ +0.1	0 ~ -9.9	-10 ~ -19.9	-20 ~ -29.9
BT50	+28 ~ +18.1	+18 ~ +8.1	+8 ~ -1.9	-2 ~ -11.9	-12 ~ -21.9

Seal unit

P. 178



Reduction sleeve for CMT

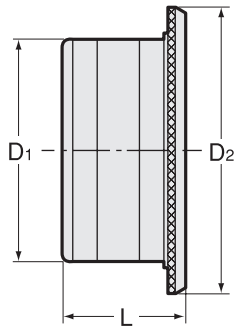


Code	Model	MT No.X	MT No.Y	L1	L2	H1	H2	kg
2504 11000031	CMT3 -1	3	1	94	5	13	15	0.3
2504 11000032	-2	3	2	94	15	17	20	0.3
2504 11000041	CMT4 -1	4	1	117.5	4.5	13	15	0.6
2504 11000042	-2	4	2	117.5	6.5	17	20	0.6
2504 11000043	-3	4	3	117.5	22.5	21	22	0.7
2504 11000052	CMT5 -2	5	2	149.5	0.5	17	20	1.4
2504 11000053	-3	5	3	149.5	2.5	21	22	1.3
2504 11000054	-4	5	4	149.5	15.5	21	34	1.3

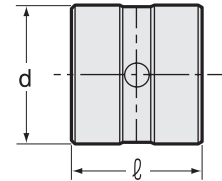
Seal Unit

When replacing seal unit, please purchase both body and seal sleeve.

Seal unit body



Seal sleeve



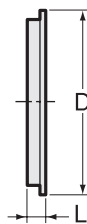
Unit : Metric (inch)

Code	Model	Seal unit body			Seal sleeve	
		D1	D2	L	d	ℓ
2984 00000001	CS-1	56 (2.205)	71 (2.795)	31 (1.220)	35 (1.378)	33 (1.299)
2984 00000002	CS-2	67 (2.638)	82 (3.228)	31 (1.220)	45 (1.772)	33 (1.299)
2984 00000003	CS-3	75 (2.953)	90 (3.543)	31 (1.220)	55 (2.165)	33 (1.299)
2984 00000004	CS-4	85	100	31	65	33

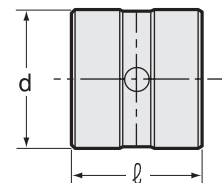
Seal unit body and seal sleeve are made as one unit.

When replacing 2 seals only, please purchase a seal set as shown below.

Seal



Seal sleeve



Unit : Metric (inch)

Code	Model	D	Seal		d	Seal sleeve	
			L	Qty		ℓ	Qty
2984 10000001	CS-1P	47 (1.850)	4.8 (0.189)	2	35 (1.378)	33 (1.299)	1
2984 10000002	CS-2P	57 (2.244)	4.8 (0.189)	2	45 (1.772)	33 (1.299)	1
2984 10000003	CS-3P	67 (2.638)	4.8 (0.189)	2	55 (2.165)	33 (1.299)	1
2984 10000004	CS-4P	77	4.8	2	65	33	1

1.2 seals and 1 seal sleeve are made as one unit.

2.Refer to "How to replace seal unit" in the instruction manual.