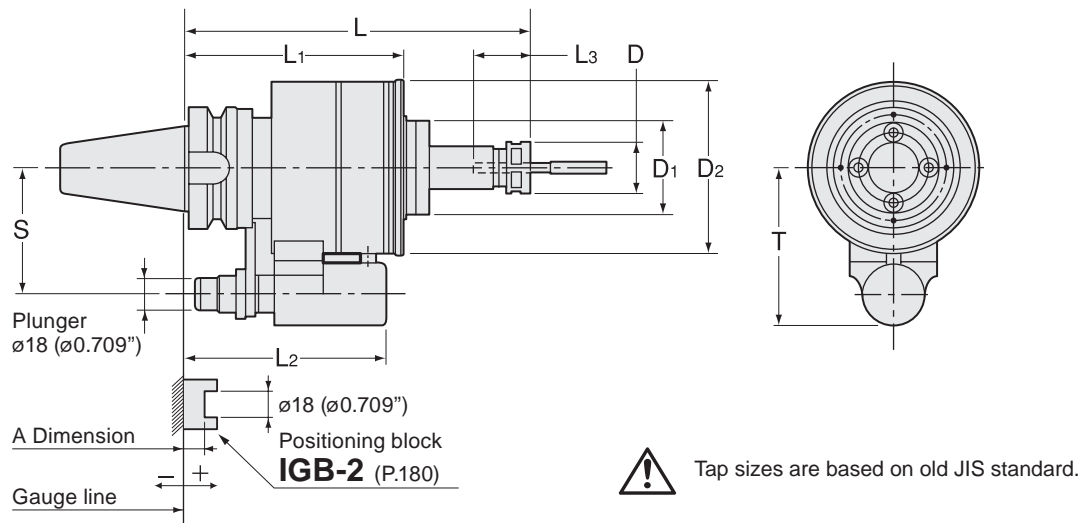


TP-CS

Tapping Chuck (Coolant Inducer)



Tap sizes are based on old JIS standard.

Metric Sizes

Unit : Metric

Code	Model	Tap size	L	L1	L2	L3 ± 3	D	Compression	Tension	D1	D2	T	S	MAX min ⁻¹	Max. Coolant	Seal unit	kg
2980 6309180 ※	BT40 -TP09 -180CS- ※	M6 ~ M10	180	114	105	26	26	0.5	20	48	90	81	65	5,000	2MPa	CS-3	4.9
2980 6312195 ※	BT40 -TP12 -195CS- ※	M6 ~ M10	195	114	105	35	32	0.5	20	48	90	81	65	5,000	2MPa	CS-3	4.5
2980 6312195 ※	-195CS- ※	M12 ~ M14	195	114	105	40	32	0.5	20	48	90	81	65	5,000	2MPa	CS-3	4.5
2980 6316210 ※	BT40 -TP16 -210CS- ※	M12 ~ M14	210	128	117	40	36	0.5	20	58	100	81	65	4,000	2MPa	CS-4	5.0
2980 6316210 ※	-210CS- ※	M16 ~ M18	210	128	117	47	36	0.5	20	58	100	81	65	4,000	2MPa	CS-4	5.0
2980 6322225 ※	BT40 -TP22 -225CS- ※	M16 ~ M20	225	128	117	47	46	0.5	20	58	100	81	65	4,000	2MPa	CS-4	6.5
2980 6322225 ※	-225CS- ※	M22 ~ M27	225	128	117	53	46	0.5	20	58	100	81	65	4,000	2MPa	CS-4	6.5
2980 6509195 ※	BT50 -TP09 -195CS- ※	M6 ~ M10	195	123	114	26	26	0.5	20	48	90	96	80	5,000	2MPa	CS-3	7.8
2980 6512210 ※	BT50 -TP12 -210CS- ※	M6 ~ M10	210	123	114	35	32	0.5	20	48	90	96	80	5,000	2MPa	CS-3	8.2
2980 6512210 ※	-210CS- ※	M12 ~ M14	210	123	114	40	32	0.5	20	48	90	96	80	5,000	2MPa	CS-3	8.2
2980 6516210 ※	BT50 -TP16 -210CS- ※	M12 ~ M14	210	125	114	40	36	0.5	20	58	100	96	80	4,000	2MPa	CS-4	8.3
2980 6516210 ※	-210CS- ※	M16 ~ M18	210	125	114	47	36	0.5	20	58	100	96	80	4,000	2MPa	CS-4	8.3
2980 6522225 ※	BT50 -TP22 -225CS- ※	M16 ~ M20	225	125	114	47	46	0.5	20	58	100	96	80	4,000	2MPa	CS-4	8.5
2980 6522225 ※	-225CS- ※	M22 ~ M27	225	125	114	53	46	0.5	20	58	100	96	80	4,000	2MPa	CS-4	8.5

1. When ordering, please specify the plunger number(No.1~No.5).
2. Plunger is adjustable. Please refer to a chart on the right.
3. Preset driver, coolant collet and spanner are sold separately.
4. Seal unit can be replaced by customer.

Accessories

Model	Preset driver	Tap size	Collet	Spanner
TP09	CTPS09- ※	M6 ~ M10	FDC-09 (OH or C)	S-1L
TP12	CTPS12- ※	M6 ~ M14	FDC-12 (OH or C)	S-3L
TP16	CTPS16- ※	M12 ~ M18	FDC-16 (OH or C)	S-4L
TP22	CTPS22- ※	M16 ~ M27	FDC-22 (OH or C)	S-5L

Seal unit

P. 178



1. Please specify tap size.
2. Please refer to tap size for I.D. of collet.

Tap size (Old JIS)

Metric Thread	Unified Thread	Whitworth Thread	Shank Dia. ϕ	Square \square
M6	U1/4	W1/4	6	4.5
	U5/16	W5/16	6.1	5
M7 M8			6.2	5
M9 M10	U3/8	W3/8	7	5.5
M11	U7/16	W7/16	8	6
M12			8.5	6.5
	U1/2	W1/2	9	7
M14 M15	U9/16	W9/16	10.5	8
	U5/8	W5/8	12	9
M16			12.5	10
M17			13	10
M18	U3/4	W3/4	14	11
M20			15	12
M22	U7/8	W7/8	17	13

Plunger table

Model	Plunger No. A				
	No.1	No.2	No.3	No.4	No.5
BT40-TP09	+20 ~ +10.1	+10 ~ +0.1	0 ~ -9.9	-10 ~ -19.9	+20 ~ -29.9
BT40-TP12	+20 ~ +10.1	+10 ~ +0.1	0 ~ -9.9	-10 ~ -19.9	+20 ~ -29.9
BT40-TP16	+33 ~ +23.1	+23 ~ +13.1	+13 ~ +3.1	+3 ~ -6.9	-7 ~ -16.9
BT40-TP22	+33 ~ +23.1	+23 ~ +13.1	+13 ~ +3.1	+3 ~ -6.9	-7 ~ -16.9
BT50	+28 ~ +18.1	+18 ~ +8.1	+8 ~ -1.9	-2 ~ -11.9	-12 ~ -21.9

Ordering Example

BT40 - TP 09 - 180 CS - 1

Shank size Size Projection length (L) Plunger No.

BT
CAT
AHO
HSK-A/E/F/C
HSK-T
UTS
Specialized Machine
Related Equipment
Bush & Chamfering Drill

Milling Chuck

Collet Holder

"R" Zero Holder

Hydraulic Chuck

Shrink fit

Tapping Chuck

Arbors

Function Holder

Turning Tool

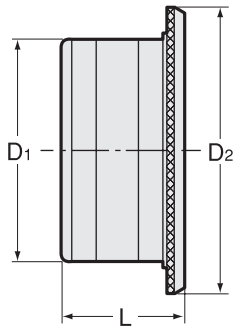
Retention Stud

Tool Shank Dimensions

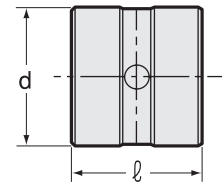
Seal Unit

When replacing seal unit, please purchase both body and seal sleeve.

Seal unit body



Seal sleeve



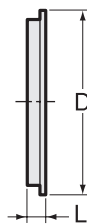
Unit : Metric (inch)

Code	Model	Seal unit body			Seal sleeve	
		D1	D2	L	d	l
2984 00000001	CS-1	56 (2.205)	71 (2.795)	31 (1.220)	35 (1.378)	33 (1.299)
2984 00000002	CS-2	67 (2.638)	82 (3.228)	31 (1.220)	45 (1.772)	33 (1.299)
2984 00000003	CS-3	75 (2.953)	90 (3.543)	31 (1.220)	55 (2.165)	33 (1.299)
2984 00000004	CS-4	85	100	31	65	33

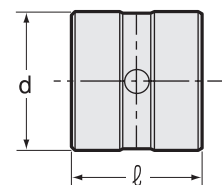
Seal unit body and seal sleeve are made as one unit.

When replacing 2 seals only, please purchase a seal set as shown below.

Seal



Seal sleeve



Unit : Metric (inch)

Code	Model	D	Seal		d	Seal sleeve	
			L	Qty		l	Qty
2984 10000001	CS-1P	47 (1.850)	4.8 (0.189)	2	35 (1.378)	33 (1.299)	1
2984 10000002	CS-2P	57 (2.244)	4.8 (0.189)	2	45 (1.772)	33 (1.299)	1
2984 10000003	CS-3P	67 (2.638)	4.8 (0.189)	2	55 (2.165)	33 (1.299)	1
2984 10000004	CS-4P	77	4.8	2	65	33	1

1.2 seals and 1 seal sleeve are made as one unit.

2. Refer to "How to replace seal unit" in the instruction manual.