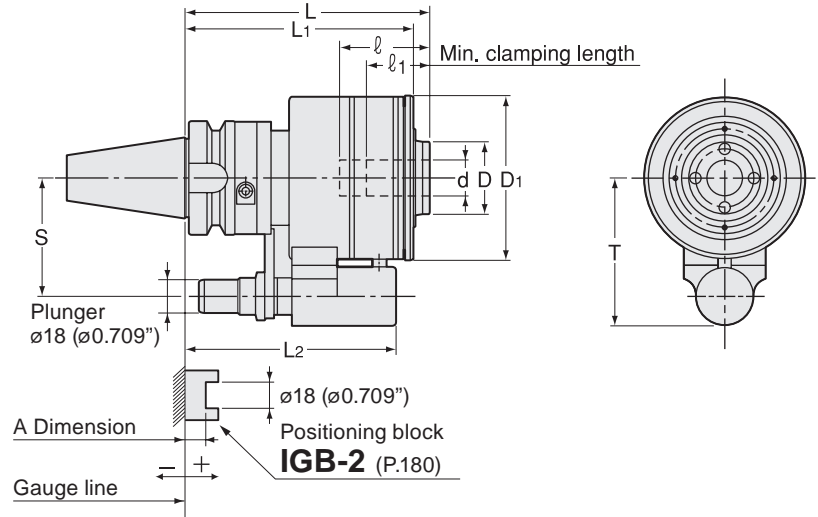


HC-CS

Hydraulic Chuck (Coolant Inducer)



Metric Sizes

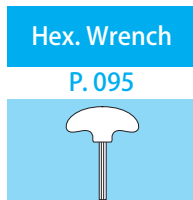
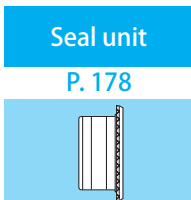
Unit : Metric

Code	Model	d	L	L1	L2	D	D1	ℓ	ℓ1	T	S	MAX min ⁻¹	Max. Coolant	Seal unit	kg	Hex. Wrench (Option)
2980 3316135 ※	BT40 -HC16 -135CS- ※	16	135	126	117	41	90	50	40	81	65	5,000	2MPa	CS-3	5.0	L-4T
2980 3320135 ※	BT40 -HC20 -135CS- ※	20	135	126	117	45	90	50	40	81	65	5,000	2MPa	CS-3	5.0	
2980 3325135 ※	BT40 -HC25 -135CS- ※	25	135	130	118	50	100	60	50	81	65	4,000	2MPa	CS-4	5.7	L-6T
2980 3516150 ※	BT50 -HC16 -150CS- ※	16	150	135	126	42	90	50	40	96	80	5,000	2MPa	CS-3	8.1	L-4T
2980 3520150 ※	BT50 -HC20 -150CS- ※	20	150	135	126	46	90	50	40	96	80	5,000	2MPa	CS-3	8.8	
2980 3525150 ※	BT50 -HC25 -150CS- ※	25	150	139	128	52	100	60	50	96	80	4,000	2MPa	CS-4	9.4	L-6T

- When ordering, please specify the plunger number(No.1~No.5).
- Plunger is adjustable. Please refer to a chart on the right.
- Please use cutting tool with smaller tolerance than h7. Tolerance within ± 0.01 is recommended in case newly making cutting tools.
- Never operate clamp bolt without cutting tool in the chuck, otherwise the chuck will be damaged.
- Seal unit can be replaced by customer.

Ordering Example

BT40 - HC 16 S - 135 CS - 1
 Shank size I.D. (d) Projection length (L) Plunger No.

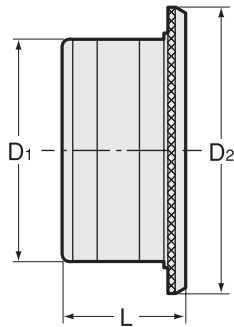


Plunger table					
Model	Plunger No. A				
	No.1	No.2	No.3	No.4	No.5
BT40-HC16	+32 ~ +22.1	+22 ~ +12.1	+12 ~ +2.1	+2 ~ -7.9	-8 ~ -17.9
BT40-HC20	+32 ~ +22.1	+22 ~ +12.1	+12 ~ +2.1	+2 ~ -7.9	-8 ~ -17.9
BT40-HC25	+34 ~ +24.1	+24 ~ +14.1	+14 ~ +4.1	+4 ~ -5.9	-6 ~ -15.1
BT50-HC16	+40 ~ +30.1	+30 ~ +20.1	+20 ~ +10.1	+10 ~ +0.1	0 ~ -9.9
BT50-HC20	+40 ~ +30.1	+30 ~ +20.1	+20 ~ +10.1	+10 ~ +0.1	0 ~ -9.9
BT50-HC25	+42 ~ +32.1	+32 ~ +22.1	+22 ~ +12.1	+12 ~ +2.1	+2 ~ -7.9

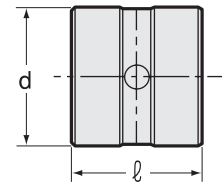
Seal Unit

When replacing seal unit, please purchase both body and seal sleeve.

Seal unit body



Seal sleeve



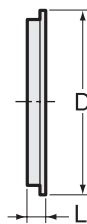
Unit : Metric (inch)

Code	Model	Seal unit body			Seal sleeve	
		D1	D2	L	d	ℓ
2984 00000001	CS-1	56 (2.205)	71 (2.795)	31 (1.220)	35 (1.378)	33 (1.299)
2984 00000002	CS-2	67 (2.638)	82 (3.228)	31 (1.220)	45 (1.772)	33 (1.299)
2984 00000003	CS-3	75 (2.953)	90 (3.543)	31 (1.220)	55 (2.165)	33 (1.299)
2984 00000004	CS-4	85	100	31	65	33

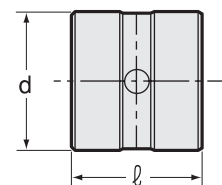
Seal unit body and seal sleeve are made as one unit.

When replacing 2 seals only, please purchase a seal set as shown below.

Seal



Seal sleeve



Unit : Metric (inch)

Code	Model	D	Seal		d	Seal sleeve	
			L	Qty		ℓ	Qty
2984 10000001	CS-1P	47 (1.850)	4.8 (0.189)	2	35 (1.378)	33 (1.299)	1
2984 10000002	CS-2P	57 (2.244)	4.8 (0.189)	2	45 (1.772)	33 (1.299)	1
2984 10000003	CS-3P	67 (2.638)	4.8 (0.189)	2	55 (2.165)	33 (1.299)	1
2984 10000004	CS-4P	77	4.8	2	65	33	1

1.2 seals and 1 seal sleeve are made as one unit.

2. Refer to "How to replace seal unit" in the instruction manual.