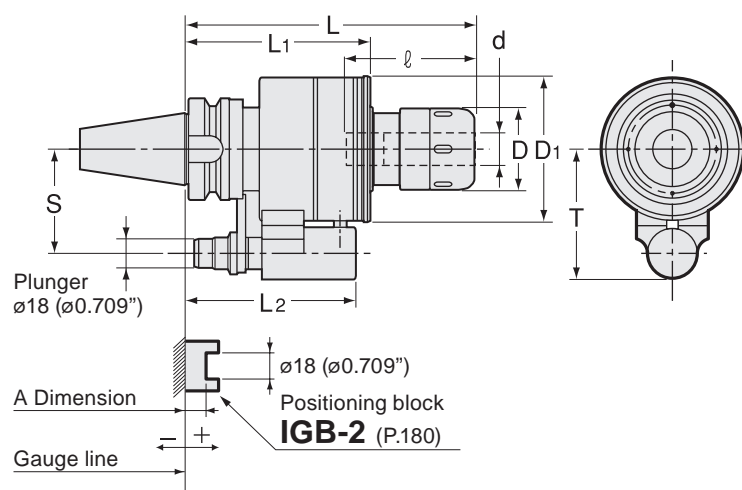


# CT·S-CS

Super Tite-Lock Milling Chuck (Coolant Inducer)



## Metric Sizes

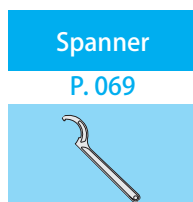
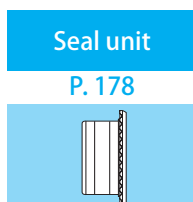
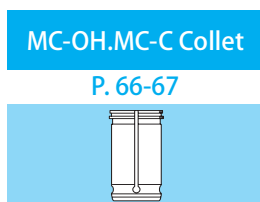
Unit : Metric

Code	Model	d	L	l	L1	L2	D	D1	T	S	MAX min <sup>-1</sup>	Max. Coolant	Seal unit	Spanner
2980 7316165 ※	<b>BT40 -CT16S -165CS-</b> ※	16	165	60	114	105	45	90	81	65	5,000	2MPa	CS-3	HS-1-16
2980 7320180 ※	<b>BT40 -CT20S -180CS-</b> ※	20	180	70	114	105	52	90	81	65	5,000	2MPa	CS-3	HS-2-20
2980 7325195 ※	<b>BT40 -CT25S -195CS-</b> ※	25	195	75	128	117	61	100	81	65	4,000	2MPa	CS-4	HS-2.5-25
2980 7332195 ※	<b>BT40 -CT32S -195CS-</b> ※	32	195	80	128	117	73	100	81	65	4,000	2MPa	CS-4	HS-3-32
2980 7516180 ※	<b>BT50 -CT16S -180CS-</b> ※	16	180	60	123	114	45	90	96	80	5,000	2MPa	CS-3	HS-1-16
2980 7520180 ※	<b>BT50 -CT20S -180CS-</b> ※	20	180	70	123	114	52	90	96	80	5,000	2MPa	CS-3	HS-2-20
2980 7525195 ※	<b>BT50 -CT25S -195CS-</b> ※	25	195	75	125	114	61	100	96	80	4,000	2MPa	CS-4	HS-2.5-25
2980 7532195 ※	<b>BT50 -CT32S -195CS-</b> ※	32	195	80	125	114	73	100	96	80	4,000	2MPa	CS-4	HS-3-32

1. When ordering, please specify the plunger number(No.1~No.5).
2. Plunger is adjustable. Please refer to a chart on the right.
3. Please return your coolant holder to us through your dealer for seal unit replacement.
4. When ordering, indicate number of spanners required. "No charge" spanners are limited to number of milling chucks on order.
5. Accessories cannot be used except for MC-C and MC-OH.
6. Tolerance of cutting tool shank must be h7.

### Ordering Example

**BT50 - CT 32 S - 195 CS - 1**  
 Shank size      I.D. (d)      Projection length (L)      Plunger No.



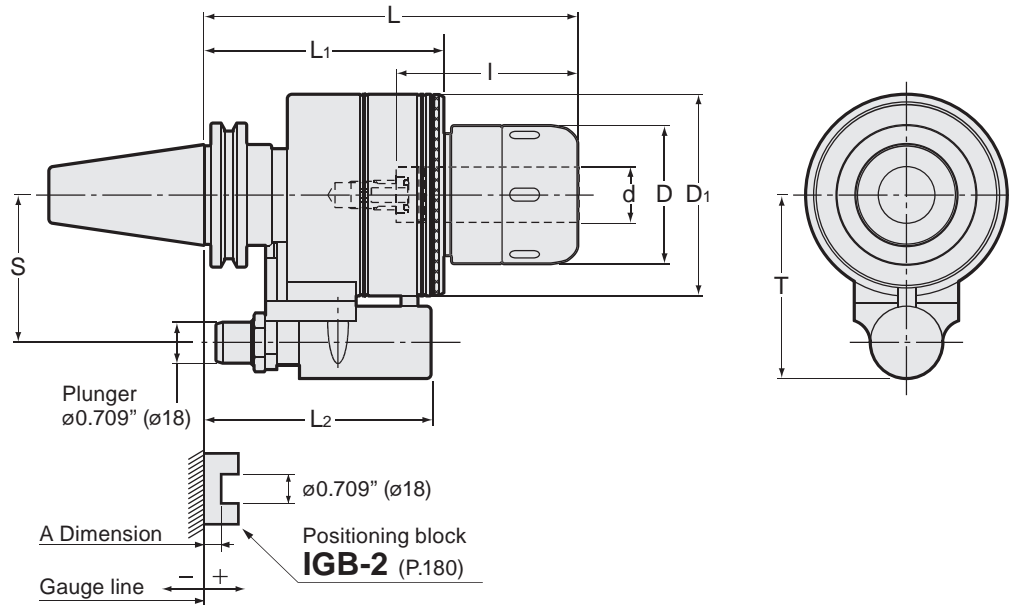
Model	Plunger table				
	Plunger No.				
	A				
	No.1	No.2	No.3	No.4	No.5
<b>BT40-CT16S</b>	+20 ~ +10.1	+10 ~ +0.1	0 ~ -9.9	-10 ~ -19.9	-20 ~ -29.9
<b>BT40-CT20S</b>	+20 ~ +10.1	+10 ~ +0.1	0 ~ -9.9	-10 ~ -19.9	-20 ~ -29.9
<b>BT40-CT25S</b>	+33 ~ +23.1	+23 ~ +13.1	+13 ~ +3.1	+3 ~ -6.9	-7 ~ -16.9
<b>BT40-CT32S</b>	+33 ~ +23.1	+23 ~ +13.1	+13 ~ +3.1	+3 ~ -6.9	-7 ~ -16.9
<b>BT50</b>	+28 ~ +18.1	+18 ~ +8.1	+8 ~ -1.9	-2 ~ -11.9	-12 ~ -21.9

Min. chucking length	
Without coolant collet (MC-C, MC-OH)	
I.D. of Milling Chuck	Min. chucking length
16, 20	40
25, 32	50

With coolant collet (MC-C, MC-OH)	
Collet I.D.	Min. chucking length
6, 8	30
10, 12	40
16, 20	45
25	50

# CT·S-CS

Super Tite-Lock Milling Chuck type Coolant Inducer



## Inch Sizes

Unit : Inch

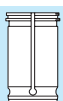
Code	Model	d	L	B	L1	L2	D	D1	D2	T	S	MAX min <sup>-1</sup>	Max. Coolant	Seal Unit	kg	Spanner
1890 2424195 ※	CAT40 -CT0750S -195CS- ※	0.750	7.677	2.756	4.923	4.549	2.047	3.543	3.504	3.189	2.559 (65mm)	5,000	2MPa	CS-3		HS-2-20
1890 2440195 ※	CAT40 -CT1250S -195CS- ※	1.250	7.677	3.150	5.039	4.587	2.874	3.937	-	3.189	2.559 (65mm)	4,000	2MPa	CS-4		HS-3-32
1890 2524200 ※	CAT50 -CT0750S -200CS- ※	0.750	7.874	2.756	5.039	4.665	2.047	3.543	3.504	3.780	3.150 (80mm)	5,000	2MPa	CS-3		HS-2-20
1890 2540200 ※	CAT50 -CT1250S -200CS- ※	1.250	7.874	3.150	5.118	4.665	2.874	3.937	-	3.780	3.150 (80mm)	4,000	2MPa	CS-4	10.2	HS-3-32

Type		Plunger				
		No.1	No.2	No.3	No.4	No.5
CAT40	CT	A	A	A	A	A
CAT50	CT	+0.909 ~ +1.299	+0.516 ~ +0.906	+0.122 ~ +0.512	-0.271 ~ +0.118	-0.665 ~ -0.276

1. When ordering, please specify the plunger number(No.1~No.5).
2. Plunger is adjustable. Please refer to a chart on the right.
3. Please return your coolant holder to us through your dealer for seal unit replacement.
4. When ordering, indicate number of spanners required. "No charge" spanners are limited to number of milling chucks on order.
5. Accessories cannot be used except for MC-C and MC-OH.
6. Tolerance of cutting tool shank must be h7.

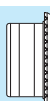
MC-OH.MC-C Collet

P. 66-67



Seal unit

P. 178



Spanner

P. 069



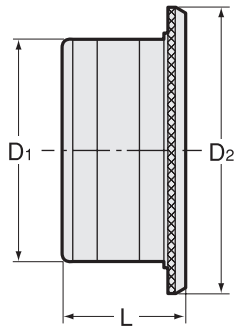
Ordering Example

**CAT40 - CT 0750 S - 195 CS - 1**  
 Shank size I.D. (d) Projection length (L) Plunger No.

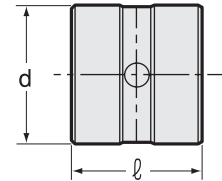
## Seal Unit

When replacing seal unit, please purchase both body and seal sleeve.

Seal unit body



Seal sleeve



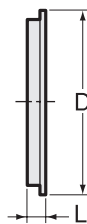
Unit : Metric (inch)

Code	Model	Seal unit body			Seal sleeve	
		D1	D2	L	d	l
2984 00000001	<b>CS-1</b>	56 (2.205)	71 (2.795)	31 (1.220)	35 (1.378)	33 (1.299)
2984 00000002	<b>CS-2</b>	67 (2.638)	82 (3.228)	31 (1.220)	45 (1.772)	33 (1.299)
2984 00000003	<b>CS-3</b>	75 (2.953)	90 (3.543)	31 (1.220)	55 (2.165)	33 (1.299)
2984 00000004	<b>CS-4</b>	85	100	31	65	33

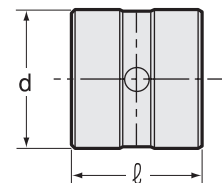
Seal unit body and seal sleeve are made as one unit.

When replacing 2 seals only, please purchase a seal set as shown below.

Seal



Seal sleeve



Unit : Metric (inch)

Code	Model	D	Seal		d	Seal sleeve	
			L	Qty		l	Qty
2984 10000001	<b>CS-1P</b>	47 (1.850)	4.8 (0.189)	2	35 (1.378)	33 (1.299)	1
2984 10000002	<b>CS-2P</b>	57 (2.244)	4.8 (0.189)	2	45 (1.772)	33 (1.299)	1
2984 10000003	<b>CS-3P</b>	67 (2.638)	4.8 (0.189)	2	55 (2.165)	33 (1.299)	1
2984 10000004	<b>CS-4P</b>	77	4.8	2	65	33	1

1.2 seals and 1 seal sleeve are made as one unit.

2. Refer to "How to replace seal unit" in the instruction manual.