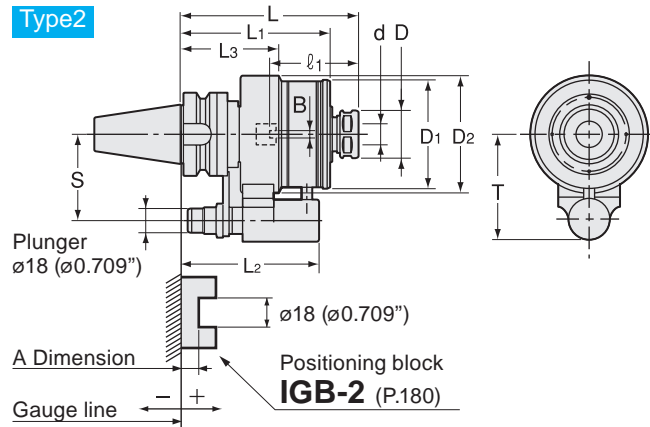
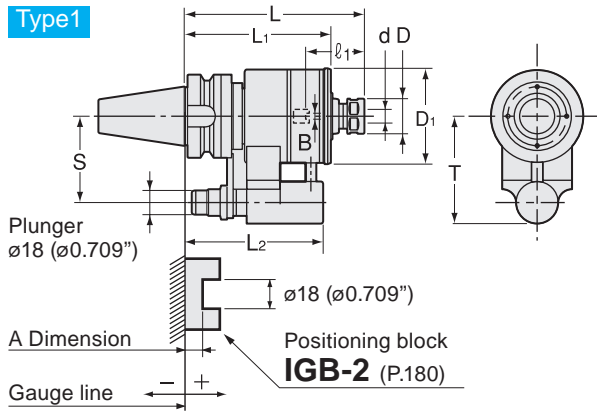


HDC·A-CS

Collet Holder (Coolant Inducer)



Unit : Metric

Code	Model	Type	d	L	B	l1	L1	L2	L3	D	D1	D2	T	S	MAX min ⁻¹	Max. Coolant	Seal unit	kg
2980 8307135 ※	BT40 -HDC07A -135CS- ※	1	3.0 ~ 7	135	0 ~ 4	22 ~ 48	110	105	—	23	71	—	81	65	8,000	2MPa	CS-1	3.6
2980 8307165 ※	-165CS- ※	1	3.0 ~ 7	165	0 ~ 4	22 ~ 48	110	105	—	23	71	—	81	65	8,000	2MPa	CS-1	3.7
2980 8309135 ※	BT40 -HDC09A -135CS- ※	1	3.0 ~ 9	135	0 ~ 4	27 ~ 48	110	105	—	26	71	—	81	65	8,000	2MPa	CS-1	3.6
2980 8309165 ※	-165CS- ※	1	3.0 ~ 9	165	0 ~ 4	27 ~ 48	110	105	—	26	71	—	81	65	8,000	2MPa	CS-1	3.7
2980 8312135 ※	BT40 -HDC12A -135CS- ※	1	3.0 ~ 12	135	0 ~ 5	33 ~ 46	110	105	—	32	71	—	81	65	8,000	2MPa	CS-1	3.6
2980 8312165 ※	-165CS- ※	1	3.0 ~ 12	165	0 ~ 5	33 ~ 46	110	105	—	32	71	—	81	65	8,000	2MPa	CS-1	3.8
2980 8316135 ※	BT40 -HDC16A -135CS- ※	2	6.0 ~ 16	135	0 ~ 6	38 ~ 66	114	105	75	36	82	89	81	65	6,000	2MPa	CS-2	4.5
2980 8316165 ※	-165CS- ※	2	6.0 ~ 16	165	0 ~ 6	38 ~ 66	114	105	75	36	82	89	81	65	6,000	2MPa	CS-2	4.7
2980 8322150 ※	BT40 -HDC22A -150CS- ※	1	6.0 ~ 22	150	0 ~ 8	47 ~ 103	114	105	—	46	90	—	81	65	5,000	2MPa	CS-3	4.7
2980 8322180 ※	-180CS- ※	1	6.0 ~ 22	180	0 ~ 8	47 ~ 103	114	105	—	46	90	—	81	65	5,000	2MPa	CS-3	5.1
2980 8507150 ※	BT50 -HDC07A -150CS- ※	1	3.0 ~ 7	150	0 ~ 4	22 ~ 48	119	114	—	23	71	—	96	80	8,000	2MPa	CS-1	6.1
2980 8507180 ※	-180CS- ※	1	3.0 ~ 7	180	0 ~ 4	22 ~ 48	119	114	—	23	71	—	96	80	8,000	2MPa	CS-1	6.3
2980 8509150 ※	BT50 -HDC09A -150CS- ※	1	3.0 ~ 9	150	0 ~ 4	27 ~ 48	119	114	—	26	71	—	96	80	8,000	2MPa	CS-1	6.1
2980 8509180 ※	-180CS- ※	1	3.0 ~ 9	180	0 ~ 4	27 ~ 48	119	114	—	26	71	—	96	80	8,000	2MPa	CS-1	6.3
2980 8512150 ※	BT50 -HDC12A -150CS- ※	1	3.0 ~ 12	150	0 ~ 5	33 ~ 46	119	114	—	32	71	—	96	80	8,000	2MPa	CS-1	6.9
2980 8512180 ※	-180CS- ※	1	3.0 ~ 12	180	0 ~ 5	33 ~ 46	119	114	—	32	71	—	96	80	8,000	2MPa	CS-1	7.0
2980 8516150 ※	BT50 -HDC16A -150CS- ※	2	6.0 ~ 16	150	0 ~ 6	38 ~ 66	123	114	84	36	82	89	96	80	6,000	2MPa	CS-2	7.7
2980 8516180 ※	-180CS- ※	2	6.0 ~ 16	180	0 ~ 6	38 ~ 66	123	114	84	36	82	89	96	80	6,000	2MPa	CS-2	8.0
2980 8522150 ※	BT50 -HDC22A -150CS- ※	1	6.0 ~ 22	150	0 ~ 8	47 ~ 103	123	114	—	46	90	—	96	80	5,000	2MPa	CS-3	7.8
2980 8522180 ※	-180CS- ※	1	6.0 ~ 22	180	0 ~ 8	47 ~ 103	123	114	—	46	90	—	96	80	5,000	2MPa	CS-3	8.2

1. Coolant collet and spanner are sold separately.
2. When ordering, please specify the plunger number(No.1~No.5).
3. Plunger is adjustable. Please refer to a chart on the right.
4. Refer to P. 092 for minimum tool insertion length in case of using our coolant collets (OH,C).
5. l1 dimensions in brackets are for using preset screw.
6. Seal unit can be replaced by customer.

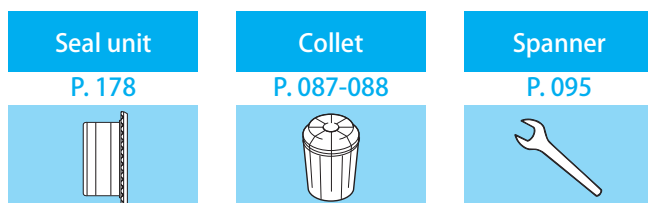
Plunger table

Model	Plunger No. A				
	No.1	No.2	No.3	No.4	No.5
BT40	+20 ~ +10.1	+10 ~ +0.1	0 ~ -9.9	-10 ~ -19.9	-20 ~ -29.9
BT50	+28 ~ +18.1	+18 ~ +8.1	+8 ~ -1.9	-2 ~ -11.9	-12 ~ -21.9

Ordering Example

BT40 - HDC 07 A - 135 CS - 1

Shank size Max. collet I.D. Projection length (L) Plunger No.



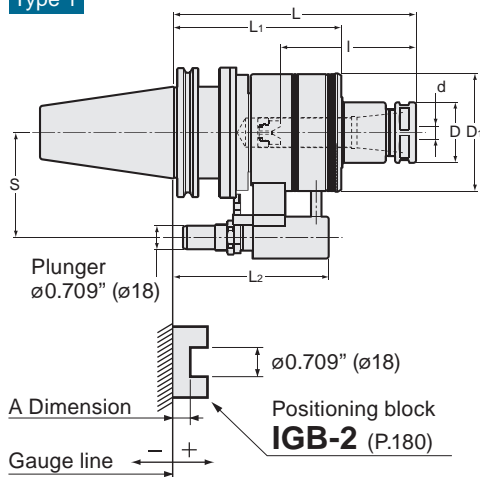
Accessories

Model	Nut	Collet	Spanner
HDC07	HDP-07A	FDC-07 (OH or C)	S-0
HDC09	HDP-09	FDC-09 (OH or C)	S-1L
HDC12	HDP-12	FDC-12 (OH or C)	S-3L
HDC16	HDP-16	FDC-16 (OH or C)	S-4L
HDC22	HDP-22	FDC-22 (OH or C)	S-5L

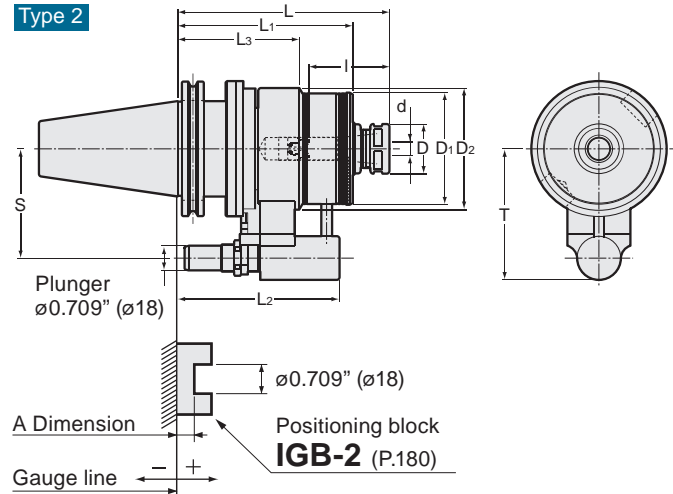
HDC·A-CS

Collet type Coolant Inducer

Type 1



Type 2


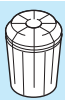



Unit:Inch

Code	Model	Type	d	L	B	I	L1	L2	L3	D	D1	D2	T	S	MAX _{min} ⁻¹	Max. Coolant	Seal Unit
1890 8416150 ※	CAT40 -HDC16A -150CS- ※	2	0.236 -0.630	5.910	0.0 -0.236	1.496 -2.559	5.079	4.704	3.543	1.417	3.228	3.504	3.189	2.559 (65mm)	6,000	2MPa	CS-2
1890 8422165 ※	CAT40 -HDC22A -165CS- ※	1	0.236 -0.866	6.500	0.0 -0.315	1.860 -4.055	5.079	4.704	—	1.811	3.543	—	3.189	2.559 (65mm)	5,000	2MPa	CS-3
1890 8516155 ※	CAT50 -HDC16A -155CS- ※	2	0.236 -1.630	6.100	0.0 -0.236	1.496 -2.559	5.039	4.665	3.504	1.417	3.228	3.504	3.780	3.150 (80mm)	6,000	2MPa	CS-2
1890 8522185 ※	CAT50 -HDC22A -185CS- ※	1	0.236 -0.866	7.280	0.0 -0.315	1.860 -4.055	5.039	4.665	—	1.811	3.543	—	3.780	3.150 (80mm)	5,000	2MPa	CS-3

Type	Plunger No.					
	No.1	No.2	No.3	No.4	No.5	
	A	A	A	A	A	
CAT40	HDC-A	+1.299" ~ +0.909" (+33mm ~ +23.1mm)	+0.906" ~ +0.516" (+23mm ~ +13.1mm)	+0.512" ~ +0.122" (+13mm ~ +3.1mm)	+0.118" ~ -0.272" (+3mm ~ -6.9mm)	-0.276" ~ -0.665" (-7mm ~ -16.9mm)
CAT50	HDC-A	+1.417" ~ +1.027" (+36mm ~ +26.1mm)	+1.023" ~ +0.633" (+26mm ~ +16.1mm)	+0.629" ~ +0.240" (+16mm ~ +6.1mm)	+0.236" ~ -0.153" (+6mm ~ -3.9mm)	-0.157" ~ -0.547" (-4mm ~ -13.9mm)

Model	Nut	Collet	Spanner
HDC16A	HDP-16	FDC-16-OH,-C	S-4L
HDC22A	HDC-22	FDC-22-OH,-C	S-5L

Seal unit	Collet	Spanner
P. 178	P. 087-088	P. 095
		

- Coolant collet and spanner are sold separately.
- When ordering, please specify the plunger number(No.1~No.5).
- Plunger is adjustable. Please refer to a chart on the right.
- Refer to P. 092 for minimum tool insertion length in case of using our coolant collets (OH,C).
- Ø1 dimensions in brackets are for using preset screw.
- Seal unit can be replaced by customer.

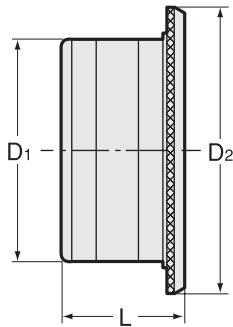
Ordering Example

CAT40 - HDC 07 A - 165 CS - 1
 Shank size Max. collet I.D. Projection length (L) Plunger No.

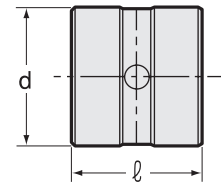
Seal Unit

When replacing seal unit, please purchase both body and seal sleeve.

Seal unit body



Seal sleeve



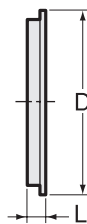
Unit : Metric (inch)

Code	Model	Seal unit body			Seal sleeve	
		D1	D2	L	d	ℓ
2984 00000001	CS-1	56 (2.205)	71 (2.795)	31 (1.220)	35 (1.378)	33 (1.299)
2984 00000002	CS-2	67 (2.638)	82 (3.228)	31 (1.220)	45 (1.772)	33 (1.299)
2984 00000003	CS-3	75 (2.953)	90 (3.543)	31 (1.220)	55 (2.165)	33 (1.299)
2984 00000004	CS-4	85	100	31	65	33

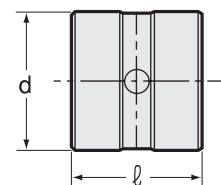
Seal unit body and seal sleeve are made as one unit.

When replacing 2 seals only, please purchase a seal set as shown below.

Seal



Seal sleeve



Unit : Metric (inch)

Code	Model	D	Seal		d	Seal sleeve	
			L	Qty		ℓ	Qty
2984 10000001	CS-1P	47 (1.850)	4.8 (0.189)	2	35 (1.378)	33 (1.299)	1
2984 10000002	CS-2P	57 (2.244)	4.8 (0.189)	2	45 (1.772)	33 (1.299)	1
2984 10000003	CS-3P	67 (2.638)	4.8 (0.189)	2	55 (2.165)	33 (1.299)	1
2984 10000004	CS-4P	77	4.8	2	65	33	1

1.2 seals and 1 seal sleeve are made as one unit.

2. Refer to "How to replace seal unit" in the instruction manual.