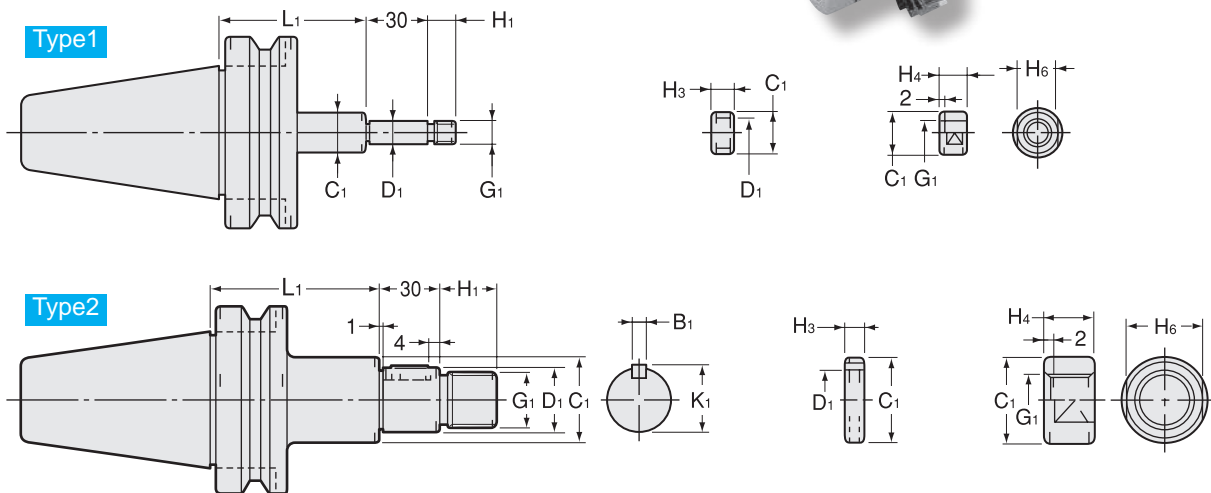
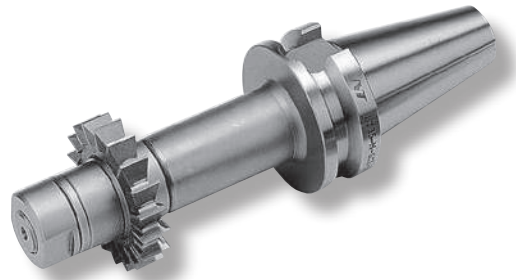


Side Cutter Arbor

- For JIS side cutter and metal saw.



Metric Sizes

Unit : Metric

Code	Model	Type	D1 (h6)	L1	C1	G1	H1	B1	K1	H3	H4	H6	kg	Cutter dia. Example
0790 00113075	BT30 -SCA13 -75	1	13	75	20	M12 × 1.25	15	—	—	3,5,7,8,10,12	12	17	0.7	50
0790 00116075	BT30 -SCA16 -75	2	16	75	26	M14 × 1.5	16	4	17.2	3,5,7,8,10,12	13	22	0.9	50 ~ 63
0790 00122075	BT30 -SCA22 -75	2	22	75	34	M20 × 1.5	21	6	23.6	3,5,7,8,10,12	18	30	1.2	60 ~ 125
0790 00313060	BT40 -SCA13 -60	1	13	60	20	M12 × 1.25	15	—	—	3,5,7,8,10,12	12	17	1.4	50
0790 00313090	-90	1	13	90	20	M12 × 1.25	15	—	—	3,5,7,8,10,12	12	17	1.7	50
0790 00316075	BT40 -SCA16 -75	2	16	75	26	M14 × 1.5	16	4	17.2	3,5,7,8,10,12	13	22	1.4	50 ~ 63
0790 00316105	-105	2	16	105	26	M14 × 1.5	16	4	17.2	3,5,7,8,10,12	13	22	1.6	50 ~ 63
0790 00322075	BT40 -SCA22 -75	2	22	75	34	M20 × 1.5	21	6	23.6	3,5,7,8,10,12	18	30	1.7	60 ~ 125
0790 00322120	-120	2	22	120	34	M20 × 1.5	21	6	23.6	3,5,7,8,10,12	18	30	2.1	60 ~ 125
0790 00327075	BT40 -SCA27 -75	2	27	75	40	M24 × 2	25	7	29	3,5,7,8,10,12	21	32	2.0	75 ~ 100
0790 00327120	-120	2	27	120	40	M24 × 2	25	7	29	3,5,7,8,10,12	21	32	2.4	75 ~ 100
0790 00332090	BT40 -SCA32 -90	2	32	90	46	M30 × 2	30	8	34	3,5,7,8,10,12	26	41	2.6	100 ~ 250
0790 00513075	BT50 -SCA13 -75	1	13	75	20	M12 × 1.25	15	—	—	3,5,7,8,10,12	12	17	4.3	50
0790 00513105	-105	1	13	105	20	M12 × 1.25	15	—	—	3,5,7,8,10,12	12	17	4.4	50
0790 00516090	BT50 -SCA16 -90	2	16	90	26	M14 × 1.5	16	4	17.2	3,5,7,8,10,12	13	22	4.1	50 ~ 63
0790 00516120	-120	2	16	120	26	M14 × 1.5	16	4	17.2	3,5,7,8,10,12	13	22	4.2	50 ~ 63
0790 00522090	BT50 -SCA22 -90	2	22	90	34	M20 × 1.5	21	6	23.6	3,5,7,8,10,12	18	30	4.4	60 ~ 125
0790 00522135	-135	2	22	135	34	M20 × 1.5	21	6	23.6	3,5,7,8,10,12	18	30	4.7	60 ~ 125
0790 00527090	BT50 -SCA27 -90	2	27	90	40	M24 × 2	25	7	29	3,5,7,8,10,12	21	32	4.5	75 ~ 100
0790 00527135	-135	2	27	135	40	M24 × 2	25	7	29	3,5,7,8,10,12	21	32	4.9	75 ~ 100
0790 00532090	BT50 -SCA32 -90	2	32	90	46	M30 × 2	30	8	34	3,5,7,8,10,12	26	41	4.9	100 ~ 250
0790 00532135	-135	2	32	135	46	M30 × 2	30	8	34	3,5,7,8,10,12	26	41	5.7	100 ~ 250
0790 00540090	BT50 -SCA40 -90	2	40	90	55	M36 × 3	36	10	42.5	3,5,7,8,10,12	31	46	5.9	150 ~ 315
0790 00540135	-135	2	40	135	55	M36 × 3	36	10	42.5	3,5,7,8,10,12	31	46	6.7	150 ~ 315

Inch Sizes

Unit : Metric

Code	Model	Type	D1 (h6)	L1	C1	G1	H1	B1	K1	H3	H4	H6	kg	Cutter dia. Example
0790 01112075	BT30 -SCA12.7 -75	1	12.7	75	20	M12 × 1.25	15	—	—	3,5,7,8,10,12	12	17	1.0	50
0790 01115075	BT30 -SCA15.875 -75	2	15.875	75	26	M14 × 1.5	16	3.18	17.42	3,5,7,8,10,12	13	22	1.2	50 ~ 63
0790 01122075	BT30 -SCA22.225 -75	2	22.225	75	34	M20 × 1.5	21	3.18	23.82	3,5,7,8,10,12	18	30	1.5	60 ~ 63
0790 01312060	BT40 -SCA12.7 -60	1	12.7	60	20	M12 × 1.25	15	—	—	3,5,7,8,10,12	12	17	1.4	50
0790 01312090	-90	1	12.7	90	20	M12 × 1.25	15	—	—	3,5,7,8,10,12	12	17	1.7	50
0790 01315075	BT40 -SCA15.875 -75	2	15.875	75	26	M14 × 1.5	16	3.18	17.42	3,5,7,8,10,12	13	22	1.4	50 ~ 63
0790 01315105	-105	2	15.875	105	26	M14 × 1.5	16	3.18	17.42	3,5,7,8,10,12	13	22	1.5	50 ~ 63
0790 01322075	BT40 -SCA22.225 -75	2	22.225	75	34	M20 × 1.5	21	3.18	23.82	3,5,7,8,10,12	18	30	1.7	60 ~ 63
0790 01322120	-120	2	22.225	120	34	M20 × 1.5	21	3.18	23.82	3,5,7,8,10,12	18	30	2.0	60 ~ 63
0790 01325075	BT40 -SCA25.4 -75	2	25.4	75	40	M24 × 2	25	6.35	27.78	3,5,7,8,10,12	21	32	2.0	75 ~ 125
0790 01325120	-120	2	25.4	120	40	M24 × 2	25	6.35	27.78	3,5,7,8,10,12	21	32	2.4	75 ~ 125
0790 01331090	BT40 -SCA31.75 -90	2	31.75	90	46	M30 × 2	30	7.92	34.92	3,5,7,8,10,12	26	41	2.6	100 ~ 250
0790 01512075	BT50 -SCA12.7 -75	1	12.7	75	20	M12 × 1.25	15	—	—	3,5,7,8,10,12	12	17	4.3	50
0790 01512105	-105	1	12.7	105	20	M12 × 1.25	15	—	—	3,5,7,8,10,12	12	17	4.4	50
0790 01515090	BT50 -SCA15.875 -90	2	15.875	90	26	M14 × 1.5	16	3.18	17.42	3,5,7,8,10,12	13	22	4.2	50 ~ 63
0790 01515120	-120	2	15.875	120	26	M14 × 1.5	16	3.18	17.42	3,5,7,8,10,12	13	22	4.4	50 ~ 63
0790 01522090	BT50 -SCA22.225 -90	2	22.225	90	34	M20 × 1.5	21	3.18	23.82	3,5,7,8,10,12	18	30	4.4	60 ~ 63
0790 01522135	-135	2	22.225	135	34	M20 × 1.5	21	3.18	23.82	3,5,7,8,10,12	18	30	4.7	60 ~ 63
0790 01525090	BT50 -SCA25.4 -90	2	25.4	90	40	M24 × 2	25	6.35	27.78	3,5,7,8,10,12	21	32	4.5	75 ~ 125
0790 01525135	-135	2	25.4	135	40	M24 × 2	25	6.35	27.78	3,5,7,8,10,12	21	32	4.9	75 ~ 125
0790 01531090	BT50 -SCA31.75 -90	2	31.75	90	46	M30 × 2	30	7.92	34.92	3,5,7,8,10,12	26	41	4.7	100 ~ 250
0790 01531135	-135	2	31.75	135	46	M30 × 2	30	7.92	34.92	3,5,7,8,10,12	26	41	5.2	100 ~ 250
0790 01538090	BT50 -SCA38.1 -90	2	38.1	90	55	M36 × 3	36	9.52	42.06	3,5,7,8,10,12	31	46	4.9	150 ~ 315
0790 01538135	-135	2	38.1	135	55	M36 × 3	36	9.52	42.06	3,5,7,8,10,12	31	46	5.9	150 ~ 315

One clamp nut and spacers (size 3, 5, 7, 8, 10, and 12 / one each) are included.

Ordering Example

BT30 - SCA 12.7 - 75

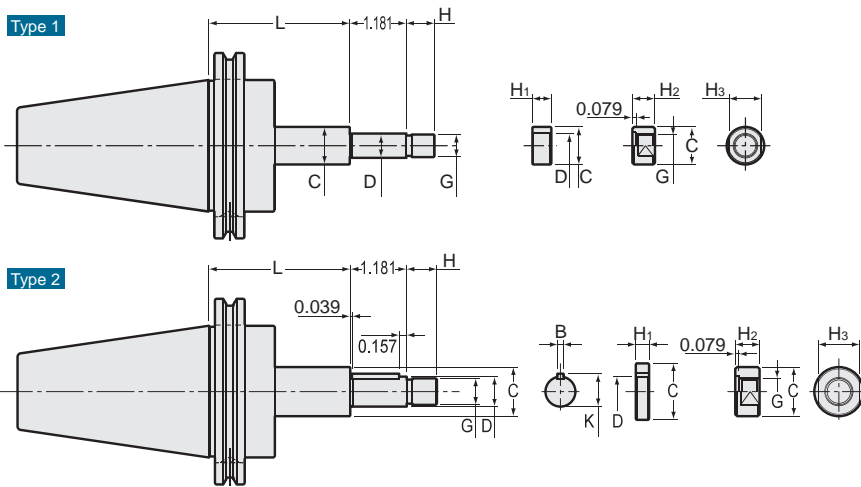
Shank size

D1

Projection
length (L)

Side Cutter Arbor

● For JIS side cutter and metal saw.



Inch Sizes

Unit : Inch

Code	Model	Type	$\frac{D}{\left(\frac{B_{10}}{h_6}\right)}$	L	C	G (mm)	H	B	K	H1	H2	H3
1900 01412060	CAT40 -SCA12.7 -60	1	0.500	2.362	0.787	M12 × 1.25	0.591	—	—	0.118, 0.197, 0.276, 0.315, 0.394, 0.472	0.472	0.669 (17mm)
1900 01412090	-90	1	0.500	3.543	0.787	M12 × 1.25	0.591	—	—	0.118, 0.197, 0.276, 0.315, 0.394, 0.472	0.472	0.669 (17mm)
1900 01415075	CAT40 -SCA15.875 -75	2	0.625	2.953	1.024	M14 × 1.5	0.630	0.125	0.686	0.118, 0.197, 0.276, 0.315, 0.394, 0.472	0.512	0.866 (22mm)
1900 01415105	-105	2	0.625	4.134	1.024	M14 × 1.5	0.630	0.125	0.686	0.118, 0.197, 0.276, 0.315, 0.394, 0.472	0.512	0.866 (22mm)
1900 01422075	CAT40 -SCA22.225 -75	2	0.875	2.953	1.339	M20 × 1.5	0.827	0.125	0.938	0.118, 0.197, 0.276, 0.315, 0.394, 0.472	0.709	1.181 (30mm)
1900 01422105	-120	2	0.875	4.724	1.339	M20 × 1.5	0.827	0.125	0.938	0.118, 0.197, 0.276, 0.315, 0.394, 0.472	0.709	1.181 (30mm)
1900 01425075	CAT40 -SCA25.4 -75	2	1.000	2.953	1.575	M24 × 2	0.984	0.250	1.094	0.118, 0.197, 0.276, 0.315, 0.394, 0.472	0.827	1.260 (32mm)
1900 01425120	-120	2	1.000	4.724	1.575	M24 × 2	0.984	0.250	1.094	0.118, 0.197, 0.276, 0.315, 0.394, 0.472	0.827	1.260 (32mm)
1900 01431090	CAT40 -SCA31.75 -90	2	1.250	3.543	1.811	M30 × 2	1.181	0.312	1.375	0.118, 0.197, 0.276, 0.315, 0.394, 0.472	1.024	1.614 (41mm)
1900 01512075	CAT50 -SCA12.7 -75	1	0.500	2.953	0.787	M12 × 1.25	0.591	—	—	0.118, 0.197, 0.276, 0.315, 0.394, 0.472	0.472	0.669 (17mm)
1900 01512105	-105	1	0.500	4.134	0.787	M12 × 1.25	0.591	—	—	0.118, 0.197, 0.276, 0.315, 0.394, 0.472	0.472	0.669 (17mm)
1900 01515090	CAT50 -SCA15.875 -90	2	0.625	3.543	1.024	M14 × 1.5	0.630	0.125	0.686	0.118, 0.197, 0.276, 0.315, 0.394, 0.472	0.512	0.866 (22mm)
1900 01515120	-120	2	0.625	4.724	1.024	M14 × 1.5	0.630	0.125	0.686	0.118, 0.197, 0.276, 0.315, 0.394, 0.472	0.512	0.866 (22mm)
1900 01522090	CAT50 -SCA22.225 -90	2	0.875	3.543	1.339	M20 × 1.5	0.827	0.125	0.938	0.118, 0.197, 0.276, 0.315, 0.394, 0.472	0.709	1.181 (30mm)
1900 01522135	-135	2	0.875	5.315	1.339	M20 × 1.5	0.827	0.125	0.938	0.118, 0.197, 0.276, 0.315, 0.394, 0.472	0.709	1.181 (30mm)
1900 01525090	CAT50 -SCA25.4 -90	2	1.000	3.543	1.575	M24 × 2	0.984	0.250	1.094	0.118, 0.197, 0.276, 0.315, 0.394, 0.472	0.827	1.260 (32mm)
1900 01525135	-135	2	1.000	5.315	1.575	M24 × 2	0.984	0.250	1.094	0.118, 0.197, 0.276, 0.315, 0.394, 0.472	0.827	1.260 (32mm)
1900 01531090	CAT50 -SCA31.75 -90	2	1.250	3.543	1.811	M30 × 2	1.181	0.312	1.375	0.118, 0.197, 0.276, 0.315, 0.394, 0.472	1.024	1.614 (41mm)
1900 01531135	-135	2	1.250	5.314	1.811	M30 × 2	1.181	0.312	1.375	0.118, 0.197, 0.276, 0.315, 0.394, 0.472	1.024	1.614 (41mm)
1900 01538090	CAT50 -SCA38.1 -90	2	1.500	3.543	2.165	M36 × 3	1.417	0.375	1.656	0.118, 0.197, 0.276, 0.315, 0.394, 0.472	1.220	1.811 (46mm)
1900 01538135	-135	2	1.500	5.315	2.165	M36 × 3	1.417	0.375	1.656	0.118, 0.197, 0.276, 0.315, 0.394, 0.472	1.220	1.811 (46mm)

One clamp nut and spacers (size 0.118, 0.197, 0.276, 0.315, 0.394, 0.472 / one each) are included.

Ordering Example

CAT40 - SCA 12.7 - 60

Shank size

D1

Projection length (L)

Metric Sizes

Unit : Inch

Code	Model	Type	D ($\frac{B10}{h6}$)	L	C	G (mm)	H	B	K	H1	H2	H3
01900000413060	CAT40 -SCA13 -60	1	13	2.362	0.787	M12 × 1.25	0.591	—	—	0.118, 0.197, 0.276, 0.315, 0.394, 0.472	0.472	0.669 (17mm)
01900000413090	-90	1	13	3.543	0.787	M12 × 1.25	0.591	—	—	0.118, 0.197, 0.276, 0.315, 0.394, 0.472	0.472	0.669 (17mm)
01900000416075	CAT40 -SCA16 -75	2	16	2.953	1.024	M14 × 1.5	0.630	0.157	0.677	0.118, 0.197, 0.276, 0.315, 0.394, 0.472	0.512	0.866 (22mm)
01900000416105	-105	2	16	4.134	1.024	M14 × 1.5	0.630	0.157	0.677	0.118, 0.197, 0.276, 0.315, 0.394, 0.472	0.512	0.866 (22mm)
01900000422075	CAT40 -SCA22 -75	2	22	2.953	1.339	M20 × 1.5	0.827	0.236	0.929	0.118, 0.197, 0.276, 0.315, 0.394, 0.472	0.709	1.181 (30mm)
01900000422120	-120	2	22	4.724	1.339	M20 × 1.5	0.827	0.236	0.929	0.118, 0.197, 0.276, 0.315, 0.394, 0.472	0.709	1.181 (30mm)
01900000427075	CAT40 -SCA27 -75	2	27	2.953	1.575	M24 × 2	0.984	0.276	1.142	0.118, 0.197, 0.276, 0.315, 0.394, 0.472	0.827	1.260 (32mm)
01900000427120	-120	2	27	4.724	1.575	M24 × 2	0.984	0.276	1.142	0.118, 0.197, 0.276, 0.315, 0.394, 0.472	0.827	1.260 (32mm)
01900000432090	CAT40 -SCA32 -90	2	32	3.543	1.811	M30 × 2	1.181	0.315	1.339	0.118, 0.197, 0.276, 0.315, 0.394, 0.472	1.024	1.614 (41mm)
01900000513075	CAT50 -SCA13 -75	1	13	2.953	0.787	M12 × 1.25	0.591	—	—	0.118, 0.197, 0.276, 0.315, 0.394, 0.472	0.472	0.669 (17mm)
01900000513105	-105	1	13	4.134	0.787	M12 × 1.25	0.591	—	—	0.118, 0.197, 0.276, 0.315, 0.394, 0.472	0.472	0.669 (17mm)
01900000516090	CAT50 -SCA16 -90	2	16	3.543	1.024	M14 × 1.5	0.630	0.157	0.677	0.118, 0.197, 0.276, 0.315, 0.394, 0.472	0.512	0.866 (22mm)
01900000516120	-120	2	16	4.724	1.024	M14 × 1.5	0.630	0.157	0.677	0.118, 0.197, 0.276, 0.315, 0.394, 0.472	0.512	0.866 (22mm)
01900000522090	CAT50 -SCA22 -90	2	22	3.543	1.339	M20 × 1.5	0.827	0.236	0.929	0.118, 0.197, 0.276, 0.315, 0.394, 0.472	0.709	1.181 (30mm)
01900000522135	-135	2	22	5.315	1.339	M20 × 1.5	0.827	0.236	0.929	0.118, 0.197, 0.276, 0.315, 0.394, 0.472	0.709	1.181 (30mm)
01900000527090	CAT50 -SCA27 -90	2	27	3.543	1.575	M24 × 2	0.984	0.276	1.142	0.118, 0.197, 0.276, 0.315, 0.394, 0.472	0.827	1.260 (32mm)
01900000527135	-135	2	27	5.315	1.575	M24 × 2	0.984	0.276	1.142	0.118, 0.197, 0.276, 0.315, 0.394, 0.472	0.827	1.260 (32mm)
01900000532090	CAT50 -SCA32 -90	2	32	3.543	1.811	M30 × 2	1.181	0.315	1.339	0.118, 0.197, 0.276, 0.315, 0.394, 0.472	1.024	1.614 (41mm)
01900000532135	-135	2	32	5.314	1.811	M30 × 2	1.181	0.315	1.339	0.118, 0.197, 0.276, 0.315, 0.394, 0.472	1.024	1.614 (41mm)
01900000540090	CAT50 -SCA40 -90	2	40	3.543	2.165	M36 × 3	1.417	0.394	1.673	0.118, 0.197, 0.276, 0.315, 0.394, 0.472	1.220	1.811 (46mm)
01900000540135	-135	2	40	5.315	2.165	M36 × 3	1.417	0.394	1.673	0.118, 0.197, 0.276, 0.315, 0.394, 0.472	1.220	1.811 (46mm)

One clamp nut and spacers (size 0.118, 0.197, 0.276, 0.315, 0.394, 0.472 / one each) are included.

Ordering Example

CAT40 - SCA 13 - 60

Shank size

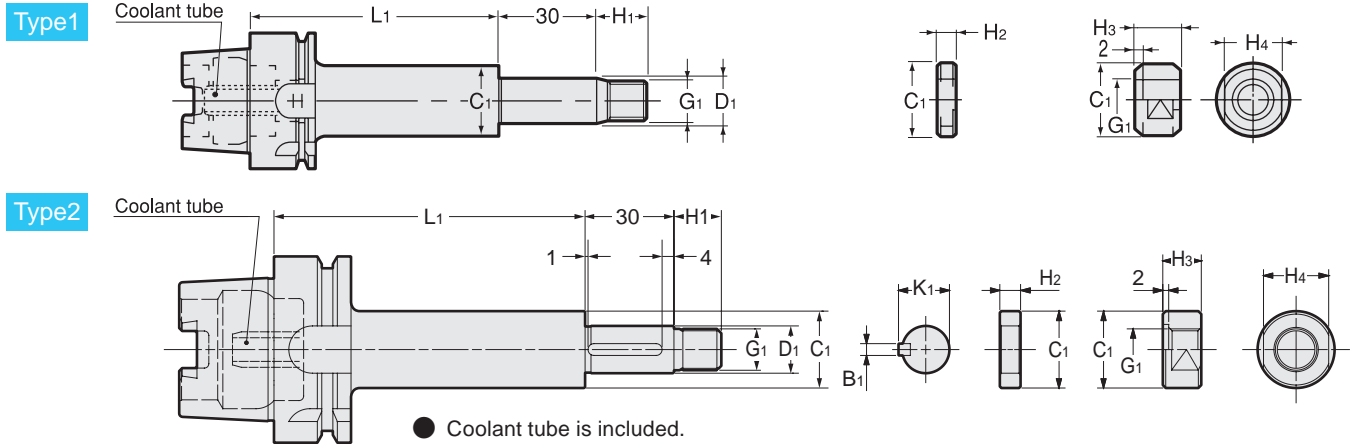
D1

Projection
length (L)

SCA

Side Cutter Arbor

● For JIS side cutter and metal saw.



Metric Sizes

Unit : Metric

Code	Model	Type	D1 (h6)	L1	C1	G1	H1	B1	K1	H2	H3	H4	kg	Cutting dia. Example
5540 13013075	HSK40A -SCA13 -75	1	13	75	20	M12 × 1.25	15	—	—	3,5,7,8,10,12	12	17		50
5540 13016075	HSK40A -SCA16 -75	2	16	75	26	M14 × 1.5	16	4	17.2	3,5,7,8,10,12	13	22		50 ~ 63
5540 13022075	HSK40A -SCA22 -75	2	22	75	34	M20 × 1.5	21	6	23.6	3,5,7,8,10,12	18	30		60 ~ 125
5540 13112075	HSK40A -SCA12.7 -75	1	12.7	75	20	M12 × 1.25	15	—	—	3,5,7,8,10,12	12	17		50
5540 13115075	HSK40A -SCA15.875 -75	2	15.875	75	26	M14 × 1.5	16	3.18	17.42	3,5,7,8,10,12	13	22		50 ~ 63
5540 13122075	HSK40A -SCA22.225 -75	2	22.225	75	34	M20 × 1.5	21	3.18	23.82	3,5,7,8,10,12	18	30		60 ~ 125
5540 14013075	HSK50A -SCA13 -75	1	13	75	20	M12 × 1.25	15	—	—	3,5,7,8,10,12	12	17		50
5540 14016075	HSK50A -SCA16 -75	2	16	75	26	M14 × 1.5	16	4	17.2	3,5,7,8,10,12	13	22		50 ~ 63
5540 14022075	HSK50A -SCA22 -75	2	22	75	34	M20 × 1.5	21	6	23.6	3,5,7,8,10,12	18	30	1.2	60 ~ 125
5540 14112075	HSK50A -SCA12.7 -75	1	12.7	75	20	M12 × 1.25	15	—	—	3,5,7,8,10,12	12	17		50
5540 14115075	HSK50A -SCA15.875 -75	2	15.875	75	26	M14 × 1.5	16	3.18	17.42	3,5,7,8,10,12	13	22		50 ~ 63
5540 14122075	HSK50A -SCA22.225 -75	2	22.225	75	34	M20 × 1.5	21	3.18	23.82	3,5,7,8,10,12	18	30		60 ~ 125
5540 15013060	HSK63A -SCA13 -60	1	13	60	20	M12 × 1.25	15	—	—	3,5,7,8,10,12	12	17	1.0	50
5540 15013090	HSK63A -SCA13 -90	1	13	90	20	M12 × 1.25	15	—	—	3,5,7,8,10,12	12	17	1.0	50
5540 15016075	HSK63A -SCA16 -75	2	16	75	26	M14 × 1.5	16	4	17.2	3,5,7,8,10,12	13	22	1.4	50 ~ 63
5540 15016105	HSK63A -SCA16 -105	2	16	105	26	M14 × 1.5	16	4	17.2	3,5,7,8,10,12	13	22	1.5	50 ~ 63
5540 15022075	HSK63A -SCA22 -75	2	22	75	34	M20 × 1.5	21	6	23.6	3,5,7,8,10,12	18	30	1.8	60 ~ 125
5540 15022120	HSK63A -SCA22 -120	2	22	120	34	M20 × 1.5	21	6	23.6	3,5,7,8,10,12	18	30	1.8	60 ~ 125
5540 15027075	HSK63A -SCA27 -75	2	27	75	40	M24 × 2	25	7	29	3,5,7,8,10,12	21	32	2.0	75 ~ 100
5540 15027120	HSK63A -SCA27 -120	2	27	120	40	M24 × 2	25	7	29	3,5,7,8,10,12	21	32	2.4	75 ~ 100
5540 15032090	HSK63A -SCA32 -90	2	32	90	46	M30 × 2	30	8	34	3,5,7,8,10,12	26	41	2.4	100 ~ 250
5540 17013075	HSK100A-SCA13 -75	1	13	75	20	M12 × 1.25	15	—	—	3,5,7,8,10,12	12	17	4.3	50
5540 17013105	HSK100A-SCA13 -105	1	13	105	20	M12 × 1.25	15	—	—	3,5,7,8,10,12	12	17	4.4	50
5540 17016090	HSK100A-SCA16 -90	2	16	90	26	M14 × 1.5	16	4	17.2	3,5,7,8,10,12	13	22	4.2	50 ~ 63
5540 17016120	HSK100A-SCA16 -120	2	16	120	26	M14 × 1.5	16	4	17.2	3,5,7,8,10,12	13	22	4.4	50 ~ 63
5540 17022090	HSK100A-SCA22 -90	2	22	90	34	M20 × 1.5	21	6	23.6	3,5,7,8,10,12	18	30	4.4	60 ~ 125
5540 17022135	HSK100A-SCA22 -135	2	22	135	34	M20 × 1.5	21	6	23.6	3,5,7,8,10,12	18	30	4.7	60 ~ 125
5540 17027090	HSK100A-SCA27 -90	2	27	90	40	M24 × 2	25	7	29	3,5,7,8,10,12	21	32	4.5	75 ~ 100
5540 17027135	HSK100A-SCA27 -135	2	27	135	40	M24 × 2	25	7	29	3,5,7,8,10,12	21	32	4.9	75 ~ 100
5540 17032090	HSK100A-SCA32 -90	2	32	90	46	M30 × 2	30	8	34	3,5,7,8,10,12	26	41	4.7	100 ~ 250
5540 17032135	HSK100A-SCA32 -135	2	32	135	46	M30 × 2	30	8	34	3,5,7,8,10,12	26	41	5.2	100 ~ 250
5540 17040090	HSK100A-SCA40 -90	2	40	90	55	M36 × 3	36	10	42.5	3,5,7,8,10,12	31	46	4.9	150 ~ 315
5540 17040135	HSK100A-SCA40 -135	2	40	135	55	M36 × 3	36	10	42.5	3,5,7,8,10,12	31	46	5.9	150 ~ 315

One clamp nut and spacers (size 3, 5, 7, 8, 10, and 12 / one each) are included.

Ordering Example

HSK40A - SCA 13 - 75

Shank size

D1

Projection length (L)