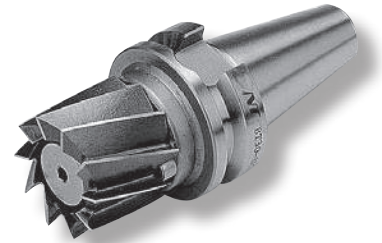
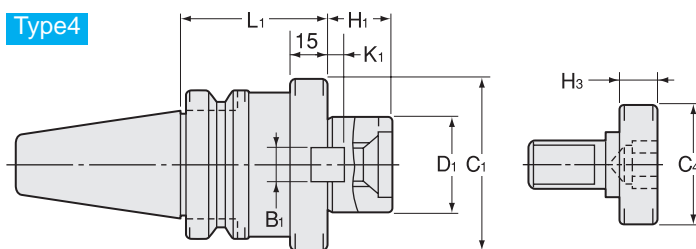
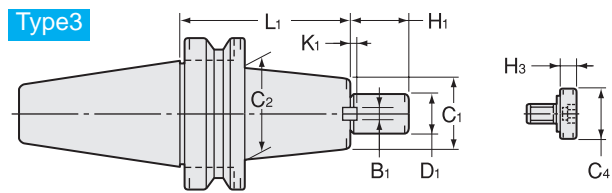
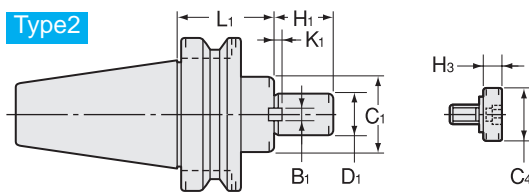
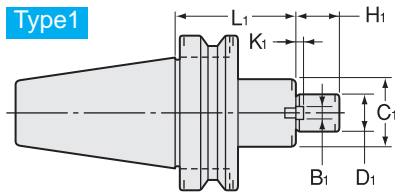


SMA

Shell End Mill Arbor

● For JIS B4214-1966 Shell end mill.



Metric Sizes

Unit : Metric

Code	Model	Type	D1 (h6)	L1	C1	C2	H1	B1	K1	C4	H3	kg	Clamp Bolt	Cutter dia. Example
0780 01116030	BT30 -SMA16 -30	1	16	30	34	—	17	8	3	20	7	0.5	MBA-M 8	35 40
0780 01122030	BT30 -SMA22 -30	1	22	30	42	—	27	8	3.5	28	9	0.6	MBA-M10	45 50
0780 01316060	BT40 -SMA16 -60	1	16	60	34	—	17	8	3	20	7	1.3	MBA-M 8	35 40
0780 01316120	-120	1	16	120	34	—	17	8	3	20	7	1.7	MBA-M 8	35 40
0780 01322060	BT40 -SMA22 -60	1	22	60	42	—	27	8	3.5	28	9	1.4	MBA-M10	45 50
0780 01322120	-120	1	22	120	42	—	27	8	3.5	28	9	2.2	MBA-M10	45 50
0780 01327045	BT40 -SMA27 -45	2	27	45	50	—	36	10	4	33	10	1.4	MBA-M12	60 75
0780 01327105	-105	2	27	105	50	—	36	10	4	33	10	2.4	MBA-M12	60 75
0780 01332045	BT40 -SMA32 -45	2	32	45	60	—	38	10	4.5	40	10	1.7	MBA-M16	100
0780 01332075	-75	2	32	75	60	—	38	10	4.5	40	10	2.3	MBA-M16	100
0780 01340060	BT40 -SMA40 -60	4	40	60	80	—	38	12	5	50	14	2.0	MBA-M20	125
0780 01516075	BT50 -SMA16 -75	1	16	75	34	—	17	8	3	20	7	4.0	MBA-M 8	35 40
0780 01516120	-120	1	16	120	34	—	17	8	3	20	7	4.3	MBA-M 8	35 40
0780 01522075	BT50 -SMA22 -75	1	22	75	42	—	27	8	3.5	28	9	4.3	MBA-M10	45 50
0780 01522120	-120	1	22	120	42	—	27	8	3.5	28	9	4.7	MBA-M10	45 50
0780 01522180	-180	1	22	180	42	—	27	8	3.5	28	9	5.4	MBA-M10	45 50
0780 01527060	BT50 -SMA27 -60	2	27	60	50	—	36	10	4	33	10	4.3	MBA-M12	60 75
0780 01527105	-105	3	27	105	50	60	36	10	4	33	10	5.2	MBA-M12	60 75
0780 01527150	-150	3	27	150	50	60	36	10	4	33	10	6.0	MBA-M12	60 75
0780 01532045	BT50 -SMA32 -45	2	32	45	60	—	38	10	4.5	40	10	4.2	MBA-M16	100
0780 01532075	-75	3	32	75	60	70	38	10	4.5	40	10	5.0	MBA-M16	100
0780 01532105	-105	3	32	105	60	70	38	10	4.5	40	10	5.7	MBA-M16	100
0780 01540045	BT50 -SMA40 -45	2	40	45	80	—	38	12	5	50	14	4.3	MBA-M20	125
0780 01540075	-75	2	40	75	80	—	38	12	5	50	14	5.7	MBA-M20	125

Clamp bolt is Included.

Inch to Metric (mm) → Inch × 25.4
Metric (mm) to Inch → Metric ÷ 25.4 or Metric × 0.03937



Special / Custom Sizes on request

Inch Sizes

Unit : Metric

Code	Model	Type	D1 (h6)	L1	C1	C2	H1	B1	K1	C4	H3	kg	Clamp Bolt	Cutter dia. Example
0780 02115030	BT30 -SMA15.875 -30	1	15.875	30	34	—	17	8	3	20	7	0.6	MBA-M 8	35 40
0780 02122030	BT30 -SMA22.225 -30	1	22.225	30	42	—	27	8	3.5	28	9	1.0	MBA-M10	45 50
0780 02315060	BT40 -SMA15.875 -60	1	15.875	60	34	—	17	8	3	20	7	1.3	MBA-M 8	35 40
0780 02315120	-120	1	15.875	120	34	—	17	8	3	20	7	1.7	MBA-M 8	35 40
0780 02322060	BT40 -SMA22.225 -60	1	22.225	60	42	—	27	8	3.5	28	9	1.5	MBA-M10	45 50
0780 02322120	-120	1	22.225	120	42	—	27	8	3.5	28	9	2.1	MBA-M10	45 50
0780 02325045	BT40 -SMA25.4 -45	2	25.4	45	50	—	36	10	4	33	10	1.4	MBA-M12	60 75
0780 02325105	-105	2	25.4	105	50	—	36	10	4	33	10	2.3	MBA-M12	60 75
0780 02331045	BT40 -SMA31.75 -45	2	31.75	45	60	—	38	10	4.5	40	10	1.6	MBA-M16	100
0780 02331075	-75	2	31.75	75	60	—	38	10	4.5	40	10	2.3	MBA-M16	100
0780 02338060	BT40 -SMA38.1 -60	4	38.1	60	80	—	38	12	5	50	14	3.0	MBA-M20	125
0780 02515075	BT50 -SMA15.875 -75	1	15.875	75	34	—	17	8	3	20	7	4.2	MBA-M 8	35 40
0780 02515120	-120	1	15.875	120	34	—	17	8	3	20	7	5.8	MBA-M 8	35 40
0780 02522075	BT50 -SMA22.225 -75	1	22.225	75	42	—	27	8	3.5	28	9	4.3	MBA-M10	45 50
0780 02522120	-120	1	22.225	120	42	—	27	8	3.5	28	9	4.7	MBA-M10	45 50
0780 02522180	-180	1	22.225	180	42	—	27	8	3.5	28	9	5.5	MBA-M10	45 50
0780 02525060	BT50 -SMA25.4 -60	2	25.4	60	50	—	36	10	4	33	10	4.3	MBA-M12	60 75
0780 02525105	-105	3	25.4	105	50	60	36	10	4	33	10	5.2	MBA-M12	60 75
0780 02525150	-150	3	25.4	150	50	60	36	10	4	33	10	6.0	MBA-M12	60 75
0780 02531045	BT50 -SMA31.75 -45	2	31.75	45	60	—	38	10	4.5	40	10	4.2	MBA-M16	100
0780 02531075	-75	3	31.75	75	60	70	38	10	4.5	40	10	4.9	MBA-M16	100
0780 02531105	-105	3	31.75	105	60	70	38	10	4.5	40	10	6.2	MBA-M16	100
0780 02538045	BT50 -SMA38.1 -45	2	38.1	45	80	—	38	12	5	50	14	4.3	MBA-M20	125
0780 02538075	-75	2	38.1	75	80	—	38	12	5	50	14	5.5	MBA-M20	125

Clamp bolt is Included.

Ordering Example

BT30 - SMA - 16 - 30
 Shank size D1 Projection length (L)