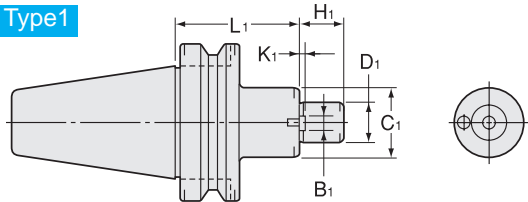


SM1

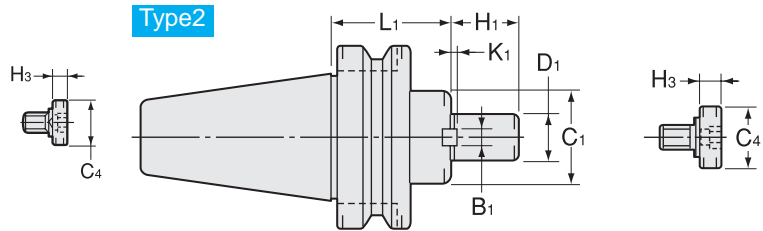
Shell End Mill Arbor

● For JIS B4214-1975 Shell end mill.

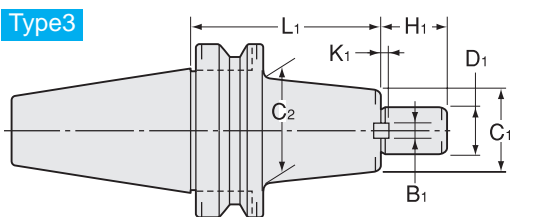
Type1



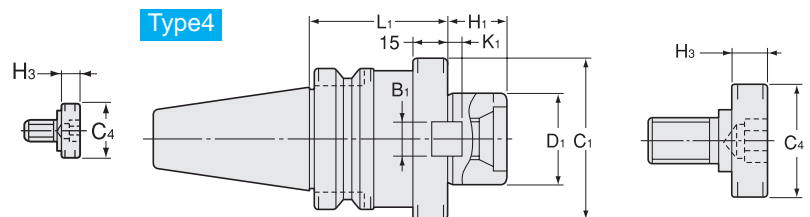
Type2



Type3



Type4



Metric Sizes

Unit : Metric

Code	Model	Type	D1 (h6)	L1	C1	C2	H1	B1	K1	C4	H3	kg	Clamp Bolt	Cutter dia. Example
0780 00116030	BT30 -SM1-16 -30	1	16	30	34	—	15	8	5	20	7	0.5	MBA-M8	40
0780 00122030	BT30 -SM1-22 -30	1	22	30	42	—	17	10	5.6	28	9	0.6	MBA-M10	50
0780 00316060	BT40 -SM1-16 -60	1	16	60	34	—	15	8	5	20	7	1.3	MBA-M8	40
0780 00316120	-120	1	16	120	34	—	15	8	5	20	7	1.7	MBA-M8	40
0780 00322060	BT40 -SM1-22 -60	1	22	60	42	—	17	10	5.6	28	9	1.5	MBA-M10	50
0780 00322120	-120	1	22	120	42	—	17	10	5.6	28	9	2.1	MBA-M10	50
0780 00327045	BT40 -SM1-27 -45	2	27	45	48	—	19	12	6.3	33	10	1.4	MBA-M12	63 80
0780 00327105	-105	2	27	105	48	—	19	12	6.3	33	10	2.3	MBA-M12	63 80
0780 00332045	BT40 -SM1-32 -45	2	32	45	58	—	24	14	7	40	10	1.6	MBA-M16	100
0780 00332075	-75	2	32	75	58	—	24	14	7	40	10	2.3	MBA-M16	100
0780 00340060	BT40 -SM1-40 -60	4	40	60	70	—	27	16	8	50	14	2.3	MBA-M20	125
0780 00516075	BT50 -SM1-16 -75	1	16	75	34	—	15	8	5	20	7	4.0	MBA-M8	40
0780 00516120	-120	1	16	120	34	—	15	8	5	20	7	6.3	MBA-M8	40
0780 00522075	BT50 -SM1-22 -75	1	22	75	42	—	17	10	5.6	28	9	4.3	MBA-M10	50
0780 00522120	-120	1	22	120	42	—	17	10	5.6	28	9	4.7	MBA-M10	50
0780 00522180	-180	1	22	180	42	—	17	10	5.6	28	9	5.3	MBA-M10	50
0780 00527060	BT50 -SM1-27 -60	2	27	60	48	—	19	12	6.3	33	10	4.2	MBA-M12	63 80
0780 00527105	-105	3	27	105	48	60	19	12	6.3	33	10	5.0	MBA-M12	63 80
0780 00527150	-150	3	27	150	48	60	19	12	6.3	33	10	5.9	MBA-M12	63 80
0780 00532045	BT50 -SM1-32 -45	2	32	45	58	—	24	14	7	40	10	4.2	MBA-M16	100
0780 00532075	-75	3	32	75	58	70	24	14	7	40	10	4.8	MBA-M16	100
0780 00532105	-105	3	32	105	58	70	24	14	7	40	10	5.6	MBA-M16	100
0780 00540075	BT50 -SM1-40 -75	3	40	75	70	80	27	16	8	50	14	5.5	MBA-M20	125
0780 00540105	-105	3	40	105	70	80	27	16	8	50	14	6.4	MBA-M20	125

Clamp bolt is Included.

Ordering Example

BT30 - SM1 - 16 - 30
 Shank size D1 Projection length (L)