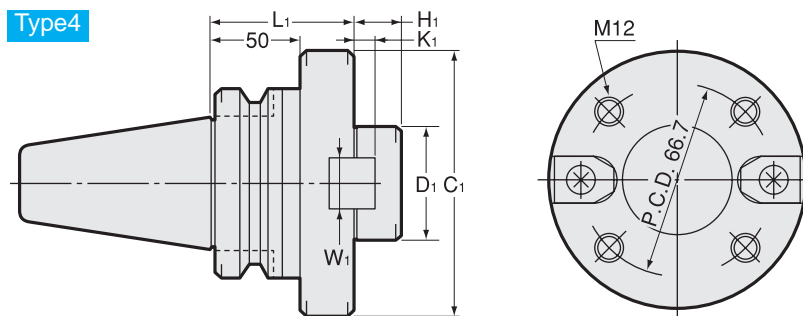
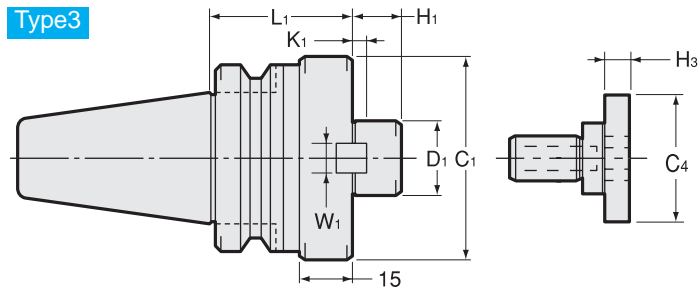
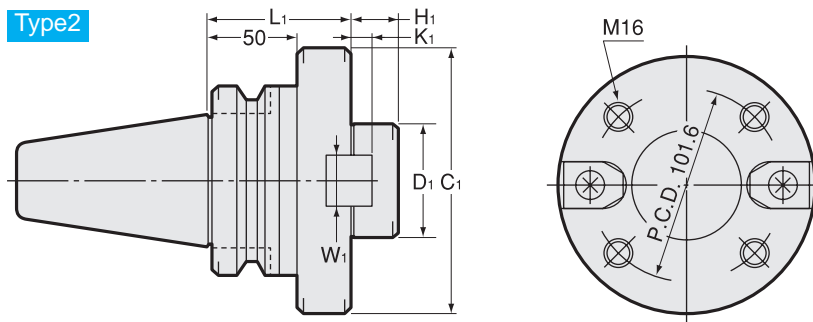
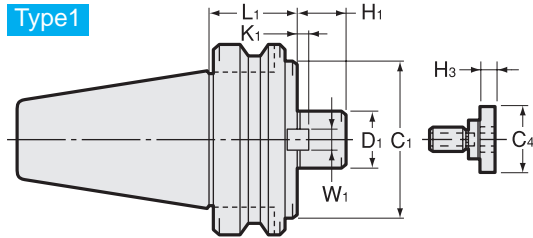


Face Mill Arbor



BT
CAT
AHO
HSK-A/E/F/C
HSK-T
UTS
Specialized Machine
Related Equipment
Bush & Chamfering Drill

Milling Chuck

Collet Holder

"R"-Zero Holder

Hydraulic Chuck

Shrink Fit

Tapping Chuck

Arbors

Function Holder

Turning Tool

Retention Stud

Tool Shank Dimensions

Metric Sizes

Unit : Metric

Code	Model	Type	D1 (h6)	L1	C1	H1	W1	K1	C4	H3	kg	Clamp Bolt	Cutter dia. example
0770 01127060	BT30 -FMB27 -60	3	27	60	80	26	12	6	33	10	1.5	MBA-M12	80
0770 01327060	BT40 -FMB27 -60	3	27	60	80	26	12	6	33	10	2.2	MBA-M12	80
0770 01327090	-90	3	27	90	80	26	12	6	33	10	3.0		
0770 01340060	BT40 -FMB40 -60	3	40	60	85	26	16	8.5	50	14	2.5	MBA-M20	100 125
0770 01527045	BT50 -FMB27 -45	1	27	45	80	26	12	6	33	10	4.2		
0770 01527090	-90	1	27	90	80	26	12	6	33	10	5.9	MBA-M12	80
0770 01527150	-150	1	27	150	80	26	12	6	33	10	8.3		
0770 01540045	BT50 -FMB40 -45	1	40	45	85	26	16	8.5	50	14	4.4		
0770 01540075	-75	1	40	75	85	26	16	8.5	50	14	5.8	MBA-M20	100 125
0770 01540105	-105	1	40	105	85	26	16	8.5	50	14	7.1		
0770 01541075	BT50 -FMB40F -75	4	40	75	110	26	16	8.5	50	14	6.8	M12, MBA-M20	160
0770 01560075	BT50 -FMB60 -75	2	60	75	140	25	25.4	12.5	—	—	8.2	M16	200

Clamp bolt is Included.

Ordering Example

BT30 - FMB 27 - 60
 Shank size D1 Projection length (L)

Inch Sizes

Unit : Metric

Code	Model	Type	D1 (h6)	L1	C1	H1	W1	K1	C4	H3	kg	Clamp Bolt	Cutter dia. example
0770 02125060	BT30 -FMB25.4 -60	3	25.4	60	80	26	9.5	5	33	10	1.5	MBA-M12	80
0770 02325060	BT40 -FMB25.4 -60	3	25.4	60	80	26	9.5	5	33	10	2.2	MBA-M12	80
0770 02325090	-90	3	25.4	90	80	26	9.5	5	33	10	2.9		
0770 02338060	-FMB38.1 -60	3	38.1	60	85	26	15.9	9	50	14	2.6	MBA-M20	100 125
0770 02525045	BT50 -FMB25.4 -45	1	25.4	45	80	26	9.5	5	33	10	4.1		
0770 02525090	-90	1	25.4	90	80	26	9.5	5	33	10	5.9	MBA-M12	80
0770 02525150	-150	1	25.4	150	80	26	9.5	5	33	10	8.4		
0770 02538045	BT50 -FMB38.1 -45	1	38.1	45	85	26	15.9	9	50	14	4.4		
0770 02538075	-75	1	38.1	75	85	26	15.9	9	50	14	5.7	MBA-M20	100 125
0770 02538105	-105	1	38.1	105	85	26	15.9	9	50	14	7.1		
0770 02539075	BT50 -FMB38.1F -75	4	38.1	75	110	26	15.9	9	50	14	5.7	M12, MBA-M20	160

Clamp bolt is Included.

Ordering Example

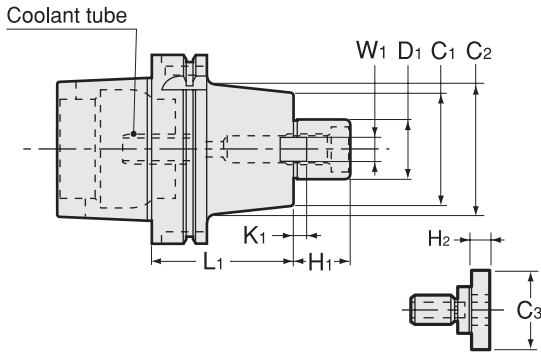
BT30 - FMA 25.4 - 60
 Shank size D1 Projection length (L)

FMB

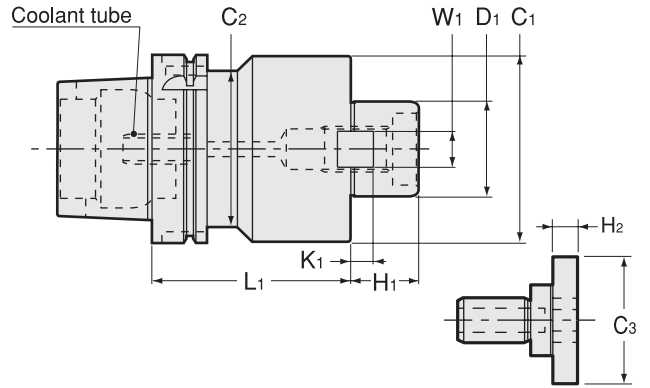
Face Mill Arbor

● For SANDVIK T-MAX face mill and shoulder cutter.

Type1



Type2



● Coolant tube is included.

Metric Sizes Unit : Metric

Code	Model	Type	D1	L1	H1	C1	C2	W1	K1	C3	H2	Clamp Bolt	Cutter dia. example
5340 13125060	HSK40A -FMB25.4 -60	2	25.4	60	26	80	34	9.5	5	33	10	MBA-M12	80
5340 13127060	HSK40A -FMB27 -60	2	27	60	26	80	34	12	6	33	10	MBA-M12	80
5340 14125060	HSK50A -FMB25.4 -60	2	25.4	60	26	80	42	9.5	5	33	10	MBA-M12	80
5340 14127060	HSK50A -FMB27 -60	2	27	60	26	80	42	12	6	33	10	MBA-M12	80
5340 25025060	HSK63A -FMB25.4 -60	2	25.4	60	26	80	53	9.5	5	33	10	MBA-M12	80
5340 25027060	HSK63A -FMB27 -60	2	27	60	26	80	53	12	6	33	10	MBA-M12	80
5340 25038060	HSK63A -FMB38.1 -60	2	38.1	60	26	85	48	15.9	9	50	14	MBA-M20	100 125
5340 27025090	HSK100A -FMB25.4 -90	1	25.4	90	26	80	80	9.5	5	33	10	MBA-M12	80
5340 27027090	HSK100A -FMB27 -90	1	27	90	26	80	80	12	6	33	10	MBA-M12	80
5340 27038105	HSK100A -FMB38.1 -105	1	38.1	105	26	85	85	15.9	9	50	14	MBA-M20	100 125

Clamp bolt is Included.

Ordering Example

HSK63A - FMB 25.4 - 60
Shank size D1 Projection length (L)