

How to select a correct arbor

Face mill and Shell mill

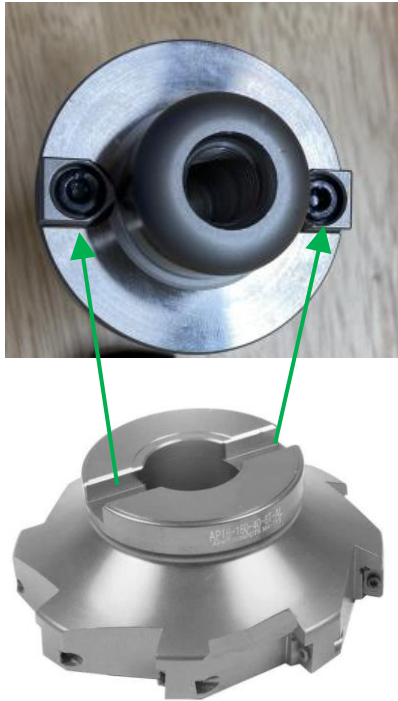


Please compare with your cutter drawing / dimensions.
If you send us a the drawing or model # information,
we are happy to select a correct arbor for you.

Face Mill vs Shell Mill

Face Mill

Drive Keys will match notches on cutting tool



NT Tool offers FMA, FMB, FMC, and FMH (coolant type) Arbors

Shell Mill

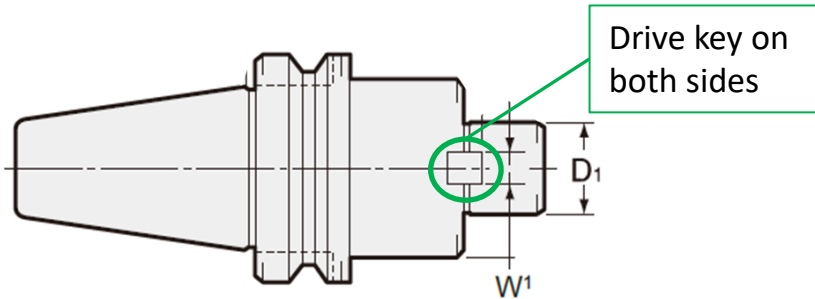
Drive Key will match notch on cutting tool



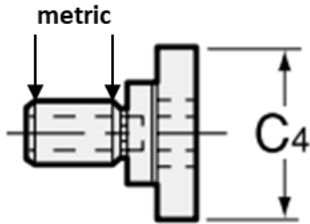
NT Tool offers SM1, SMA, SMB and SMC Arbors

Face Mill vs Shell Mill

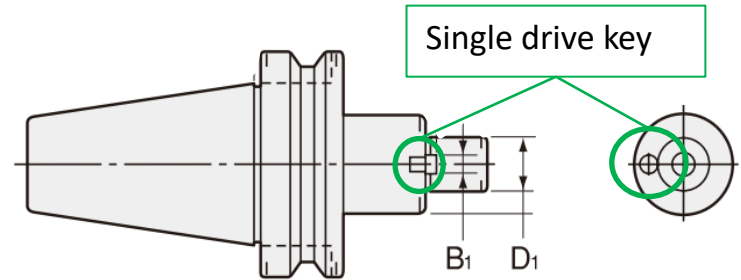
Face Mill



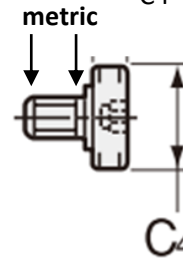
*W1 = Drive key size
 D1 = Cutting head Inner diameter
 C4 = Bolt head size



Shell End Mill



*B1 = Drive key size
 D1 = Cutting head Inner diameter
 C4 = Bolt head size



*Important Sizing

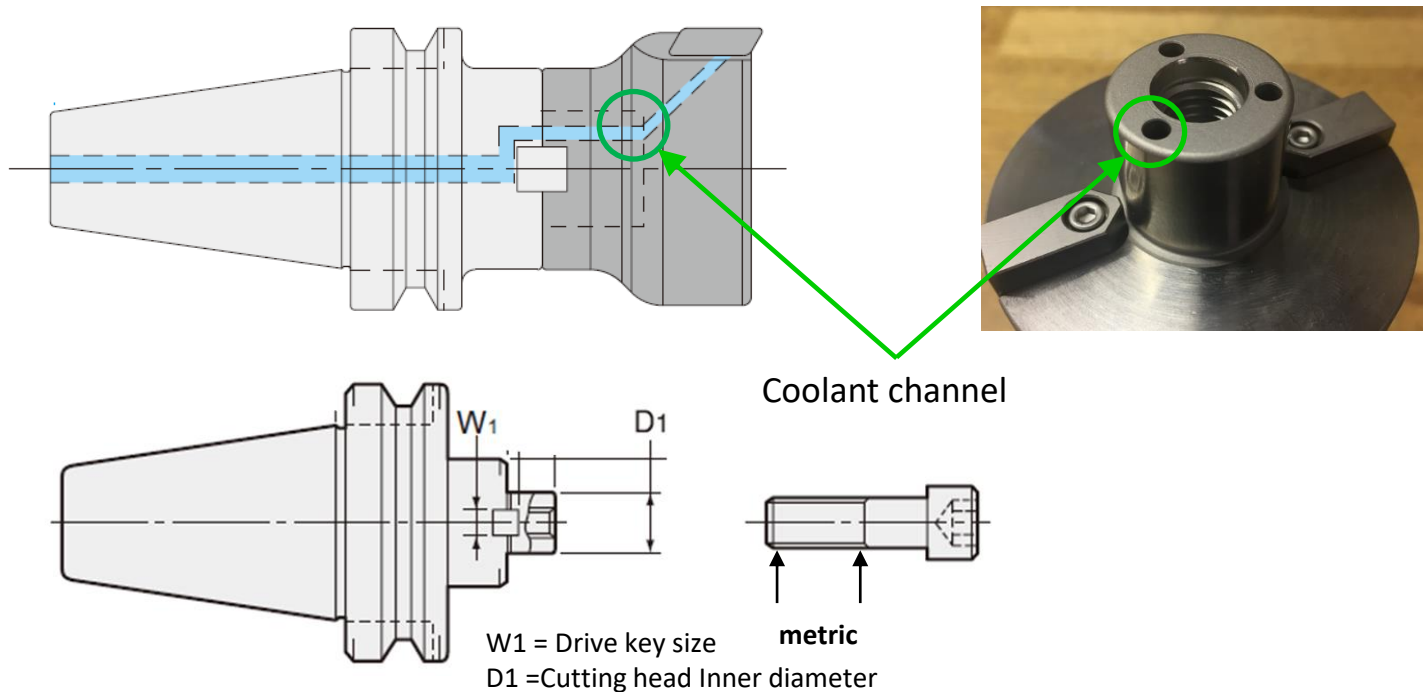
Be sure that:

Catalog Diagram number/lettering may be different per catalog

1. The drive key size matches the cutting tool (the W1 and B1 measurement)
2. The cutting head inner diameter matches D1
3. The bolt is metric and that the bolt head size C4 fits the cutter
4. Key height is important for a good fit but not depicted

NT Tool FMH/FMH-A

Coolant type Face Mill



For the FMH Face mill the drive key and inner diameter of the cutting head are important for correct ordering. The bolt will be metric and for most FMH models the bolt head will be smaller than other Face Mill arbors.