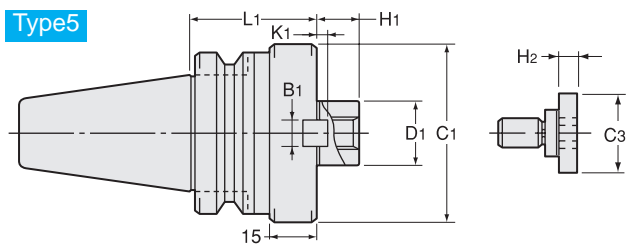
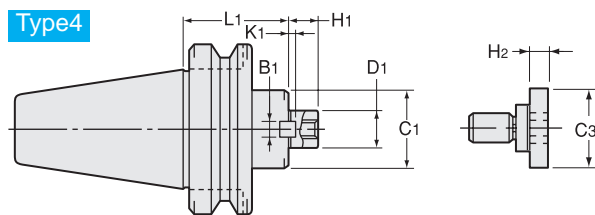
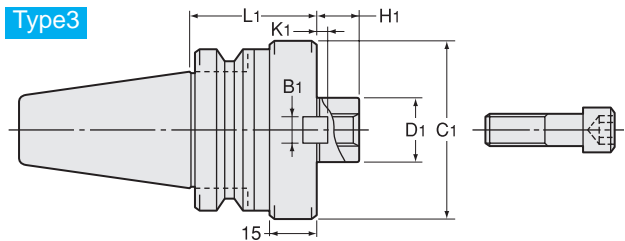
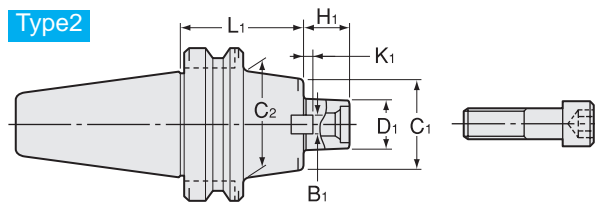
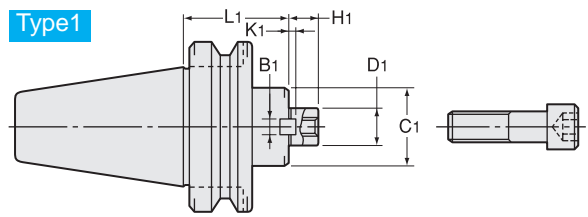
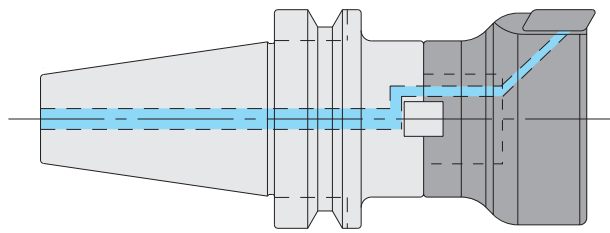


# FMH

## Face Mill Arbor (For Cutters With Oil Hole)

- Coolant flows from the end face of centering location to cutter with oil hole.



### Metric Sizes

Unit : Metric

Code	Model	Type	D1	L1	C1	C2	H1	B1	K1	C3	H2	Clamp Bolt	Cutter dia. Example
0770 05116045	<b>BT30 -FMH16 -45</b>	1	16	45	34	—	17	8	5	—	—	M8	40 50
0770 05116060	<b>-60</b>	1	16	60	34	—	17	8	5	—	—	M8	40 50
0770 05122045	<b>BT30 -FMH22 -45</b>	1	22	45	45	—	18	10	5.6	—	—	M10	50 63
0770 05122060	<b>-60</b>	1	22	60	45	—	18	10	5.6	—	—	M10	50 63
0770 05125060	<b>BT30 -FMH25.4 -60</b>	3	25.4	60	70	—	22	9.5	5	—	—	M12	80 100 125
0770 05316045	<b>BT40 -FMH16 -45</b>	1	16	45	34	—	17	8	5	—	—	M8	40 50
0770 05316060	<b>-60</b>	1	16	60	34	—	17	8	5	—	—	M8	40 50
0770 05316075	<b>-75</b>	1	16	75	34	—	17	8	5	—	—	M8	40 50
0770 05316090	<b>-90</b>	2	16	90	34	40	17	8	5	—	—	M8	40 50
0770 05322045	<b>BT40 -FMH22 -45</b>	1	22	45	45	—	18	10	5.6	—	—	M10	50 63
0770 05322060	<b>-60</b>	1	22	60	45	—	18	10	5.6	—	—	M10	50 63
0770 05322075	<b>-75</b>	1	22	75	45	—	18	10	5.6	—	—	M10	50 63
0770 05322090	<b>-90</b>	1	22	90	45	—	18	10	5.6	—	—	M10	50 63
0770 05325060	<b>BT40 -FMH25.4 -60</b>	3	25.4	60	70	—	22	9.5	5	—	—	M12	80 100 125
0770 05325075	<b>-75</b>	3	25.4	75	70	—	22	9.5	5	—	—	M12	80 100 125
0770 05325090	<b>-90</b>	3	25.4	90	70	—	22	9.5	5	—	—	M12	80 100 125
0770 05331060	<b>BT40 -FMH31.75 -60</b>	3	31.75	60	80	—	30	12.7	7	—	—	M16	80 100
0770 05331075	<b>-75</b>	3	31.75	75	80	—	30	12.7	7	—	—	M16	80 100
0770 05331090	<b>-90</b>	3	31.75	90	80	—	30	12.7	7	—	—	M16	80 100
0770 05338060	<b>BT40 -FMH38.1 -60</b>	5	38.1	60	90	—	34	15.9	9	50	14	MBAH-M20	125
0770 05338075	<b>-75</b>	5	38.1	75	90	—	34	15.9	9	50	14	MBAH-M20	125
0770 05338090	<b>-90</b>	5	38.1	90	90	—	34	15.9	9	50	14	MBAH-M20	125

## Metric Sizes

Unit : Metric

Code	Model	Type	D1	L1	C1	C2	H1	B1	K1	C3	H2	Clamp Bolt	Cutter dia. Example
0770 05516045	<b>BT50 -FMH16 -45</b>	1	16	45	34	—	17	8	5	—	—	M8	40 50
0770 05516090	<b>-90</b>	2	16	90	34	40	17	8	5	—	—	M8	40 50
0770 05516150	<b>-150</b>	2	16	150	34	40	17	8	5	—	—	M8	40 50
0770 05516200	<b>-200</b>	2	16	200	34	40	17	8	5	—	—	M8	40 50
0770 05522045	<b>BT50 -FMH22 -45</b>	1	22	45	45	—	18	10	5.6	—	—	M10	50 63
0770 05522090	<b>-90</b>	1	22	90	45	—	18	10	5.6	—	—	M10	50 63
0770 05522150	<b>-150</b>	1	22	150	45	—	18	10	5.6	—	—	M10	50 63
0770 05522200	<b>-200</b>	1	22	200	45	—	18	10	5.6	—	—	M10	50 63
0770 05525045	<b>BT50 -FMH25.4 -45</b>	1	25.4	45	70	—	22	9.5	5	—	—	M12	80 100 125
0770 05525090	<b>-90</b>	2	25.4	90	70	80	22	9.5	5	—	—	M12	80 100 125
0770 05525150	<b>-150</b>	2	25.4	150	70	80	22	9.5	5	—	—	M12	80 100 125
0770 05525200	<b>-200</b>	2	25.4	200	70	80	22	9.5	5	—	—	M12	80 100 125
0770 05531045	<b>BT50 -FMH31.75 -45</b>	1	31.75	45	80	—	30	12.7	7	—	—	M16	80 100
0770 05531105	<b>-105</b>	1	31.75	105	80	—	30	12.7	7	—	—	M16	80 100
0770 05531150	<b>-150</b>	1	31.75	150	80	—	30	12.7	7	—	—	M16	80 100
0770 05531200	<b>-200</b>	1	31.75	200	80	—	30	12.7	7	—	—	M16	80 100
0770 05538045	<b>BT50 -FMH38.1 -45</b>	4	38.1	45	90	—	34	15.9	9	50	14	MBAH-M20	125
0770 05538075	<b>-75</b>	4	38.1	75	90	—	34	15.9	9	50	14	MBAH-M20	125
0770 05538105	<b>-105</b>	4	38.1	105	90	—	34	15.9	9	50	14	MBAH-M20	125
0770 05538150	<b>-150</b>	4	38.1	150	90	—	34	15.9	9	50	14	MBAH-M20	125
0770 05550045	<b>BT50 -FMH50.8 -45</b>	4	50.8	45	100	—	36	19.05	10	65	14	MBAH-M24	160
0770 05550075	<b>-75</b>	4	50.8	75	100	—	36	19.05	10	65	14	MBAH-M24	160
0770 05550105	<b>-105</b>	4	50.8	105	100	—	36	19.05	10	65	14	MBAH-M24	160
0770 05550150	<b>-150</b>	4	50.8	150	100	—	36	19.05	10	65	14	MBAH-M24	160

Clamp bolt is Included.

## Ordering Example

**BT30 - FMH 25.4 - 60**

Shank size

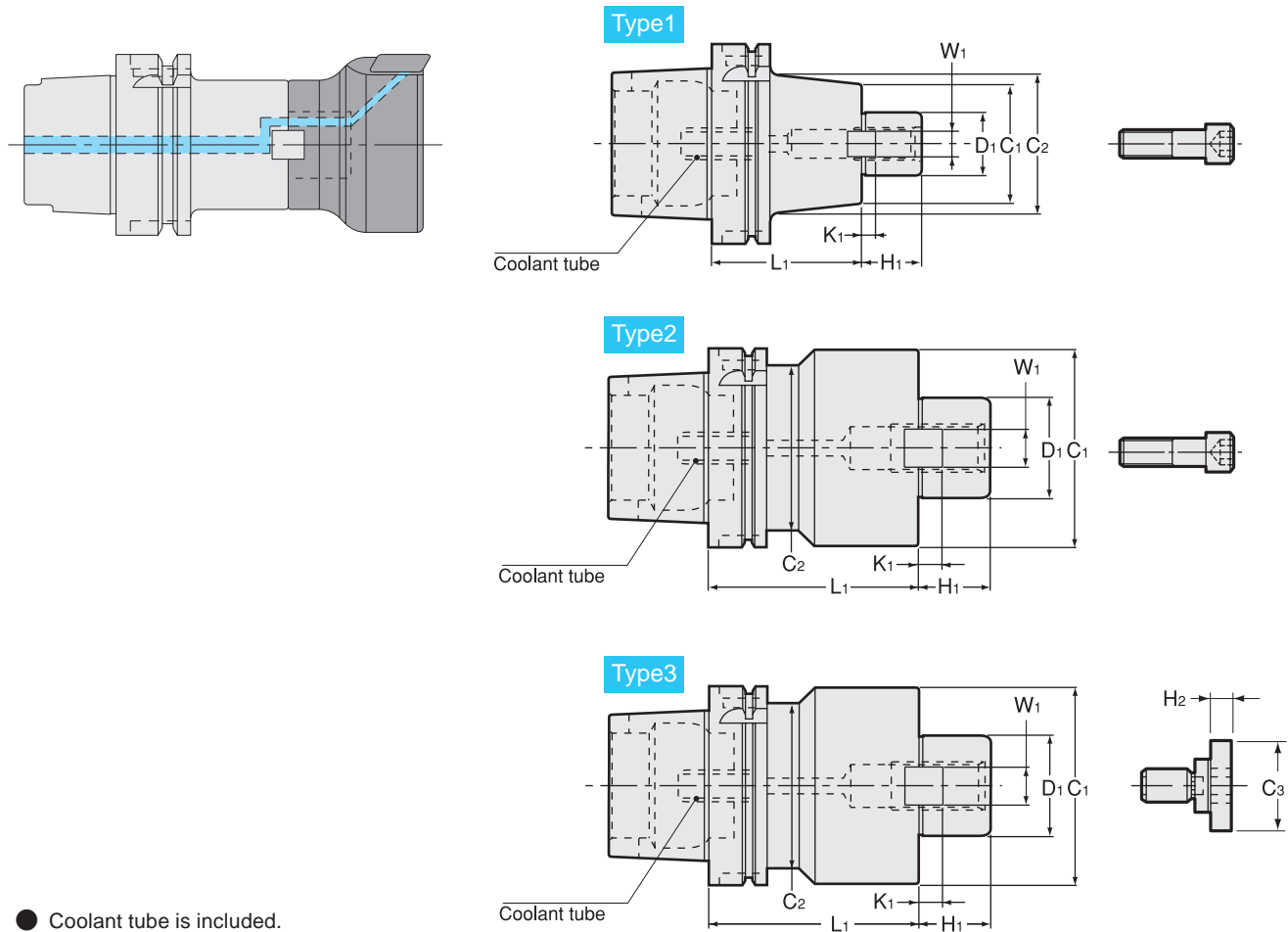
D1

Projection  
length (L)

# FMH

## Face Mill Arbor (For Cutters With Oil Hole)

- Coolant flows from the end face of centering location to cutter with oil hole.



- Coolant tube is included.

Metric Sizes													Unit : Metric	
Code	Model	Type	D1	L1	H1	C1	C2	W1	K1	C3	H2	Clamp Bolt	Cutter dia. Example	
5340 13516060	HSK40A -FMH16 -60	1	16	60	17	34	34	8	5	—	—	M8	40 50	
5340 13522060	HSK40A -FMH22 -60	2	22	60	18	45	34	10	5.6	—	—	M10	50 63	
5340 13525060	HSK40A -FMH25.4 -60	2	25.4	60	22	70	34	9.5	5	—	—	M12	80 100 125	
5340 14516060	HSK50A -FMH16 -60	1	16	60	17	34	34	8	5	—	—	M8	40 50	
5340 14522060	HSK50A -FMH22 -60	2	22	60	18	45	42	10	5.6	—	—	M10	50 63	
5340 14525060	HSK50A -FMH25.4 -60	2	25.4	60	22	70	42	9.5	5	—	—	M12	80 100 125	
5340 15516060	HSK63A -FMH16 -60	1	16	60	17	34	34	8	5	—	—	M8	40 50	
5340 15516090	-90	1	16	90	17	34	40	8	5	—	—			
5340 15516120	-120	1	16	120	17	34	40	8	5	—	—			
5340 15522060	HSK63A -FMH22 -60	1	22	60	18	45	45	10	5.6	—	—	M10	50 63	
5340 15522090	-90	1	22	90	18	45	45	10	5.6	—	—			
5340 15522120	-120	1	22	120	18	45	45	10	5.6	—	—			
5340 15525060	HSK63A -FMH25.4 -60	2	25.4	60	22	70	53	9.5	5	—	—	M12	80 100 125	
5340 15525090	-90	2	25.4	90	22	70	53	9.5	5	—	—			
5340 15525120	-120	2	25.4	120	22	70	53	9.5	5	—	—			
5340 15531060	HSK63A -FMH31.75 -60	2	31.75	60	30	80	53	12.7	7	—	—	M16	80 100	
5340 15531090	-90	2	31.75	90	30	80	53	12.7	7	—	—			
5340 15531120	-120	2	31.75	120	30	80	53	12.7	7	—	—			
5340 15538060	HSK63A -FMH38.1 -60	3	38.1	60	34	90	53	15.9	9	50	14	MBAH-M20	125	
5340 15538090	-90	3	38.1	90	34	90	53	15.9	9	50	14			
5340 15538120	-120	3	38.1	120	34	90	53	15.9	9	50	14			

**Metric Sizes** Unit : Metric

Code	Model	Type	D1	L1	H1	C1	C2	W1	K1	C3	H2	Clamp Bolt	Cutter dia. Example
5340 17516075	<b>HSK100A -FMH16 -75</b>	1	16	75	17	34	40	8	5	-	-	M8	40 50
5340 17516105	<b>-105</b>	1	16	105	17	34	40	8	5	-	-		
5340 17516135	<b>-135</b>	1	16	135	17	34	40	8	5	-	-		
5340 17522075	<b>HSK100A -FMH22 -75</b>	1	22	75	18	45	45	10	5.6	-	-	M10	50 63
5340 17522105	<b>-105</b>	1	22	105	18	45	45	10	5.6	-	-		
5340 17522135	<b>-135</b>	1	22	135	18	45	45	10	5.6	-	-		
5340 17525075	<b>HSK100A -FMH25.4 -75</b>	1	25.4	75	22	70	80	9.5	5	-	-	M12	80 100 125
5340 17525105	<b>-105</b>	1	25.4	105	22	70	80	9.5	5	-	-		
5340 17525135	<b>-135</b>	1	25.4	135	22	70	80	9.5	5	-	-		
5340 17531075	<b>HSK100A -FMH31.75 -75</b>	1	31.75	75	30	80	80	12.7	7	-	-	M16	80 100
5340 17531105	<b>-105</b>	1	31.75	105	30	80	80	12.7	7	-	-		
5340 17531135	<b>-135</b>	1	31.75	135	30	80	80	12.7	7	-	-		
5340 17538075	<b>HSK100A -FMH38.1 -75</b>	3	38.1	75	34	90	85	15.9	9	50	14	MBAH-M20	125
5340 17538105	<b>-105</b>	3	38.1	105	34	90	85	15.9	9	50	14		
5340 17538135	<b>-135</b>	3	38.1	135	34	90	85	15.9	9	50	14		
5340 17550075	<b>HSK100A -FMH50.8 -75</b>	3	50.8	75	36	100	85	19.05	10	65	14	MBAH-M24	160
5340 17550105	<b>-105</b>	3	50.8	105	36	100	85	19.05	10	65	14		
5340 17550135	<b>-135</b>	3	50.8	135	36	100	85	19.05	10	65	14		

Clamp bolt is Included.

**Ordering Example**

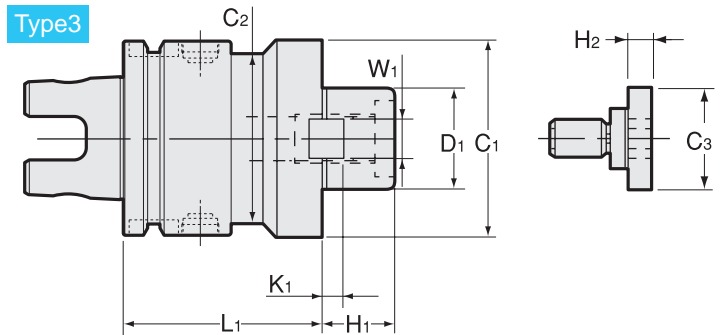
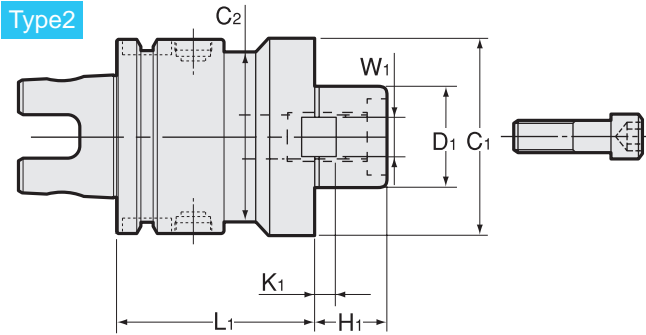
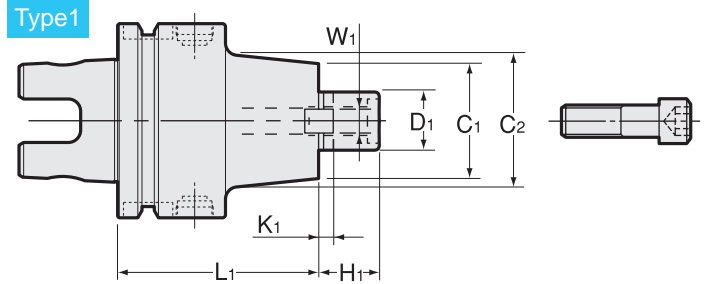
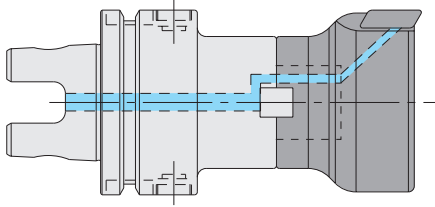
**HSK63A - FMH 25.4 - 60**  
 Shank size                      D1                      Projection length (L)



# FMH

## Face Mill Arbor (For Cutters With Oil Hole)

- Coolant flows from the end face of centering location to cutter with oil hole.



### Metric Sizes Unit : Metric

Code	Model	Type	D1 (h6)	L1	H1	C1	C2	W1	K1	C3	H2	Clamp Bolt	Cutter dia. example
1320 11116060	UTS5040 -FMH16 -60-H	1	16	60	17	34	34	8	5	—	—	M8	40 50
1320 11122060	UTS5040 -FMH22 -60-H	2	22	60	18	45	45	10	5.6	—	—	M10	50 63
1320 11125060	UTS5040 -FMH25.4 -60-H	2	25.4	60	22	70	45	9.5	5	—	—	M12	80 100 125
1320 1 ※ 216060	UTS6350 -FMH16 -60	1	16	60	17	34	34	8	5	—	—	M8	40 50
1320 1 ※ 216090	-90	1	16	90	17	34	40	8	5	—	—		
1320 1 ※ 216120	-120	1	16	120	17	34	40	8	5	—	—		
1320 1 ※ 222060	UTS6350 -FMH22 -60	1	22	60	18	45	45	10	5.6	—	—	M10	50 63
1320 1 ※ 222090	-90	1	22	90	18	45	45	10	5.6	—	—		
1320 1 ※ 222120	-120	1	22	120	18	45	45	10	5.6	—	—		
1320 1 ※ 225060	UTS6350 -FMH25.4 -60	2	25.4	60	22	70	63	9.5	5	—	—	M12	80 100 125
1320 1 ※ 225090	-90	2	25.4	90	22	70	63	9.5	5	—	—		
1320 1 ※ 225120	-120	2	25.4	120	22	70	63	9.5	5	—	—		
1320 1 ※ 231060	UTS6350 -FMH31.75-60	2	31.75	60	30	80	63	12.7	7	—	—	M16	80 100
1320 1 ※ 231090	-90	2	31.75	90	30	80	63	12.7	7	—	—		
1320 1 ※ 231120	-120	2	31.75	120	30	80	63	12.7	7	—	—		
1320 1 ※ 238060	UTS6350 -FMH38.1 -60	3	38.1	60	34	90	63	15.9	9	50	14	MBAH-M20	125
1320 1 ※ 238090	-90	3	38.1	90	34	90	63	15.9	9	50	14		
1320 1 ※ 238120	-120	3	38.1	120	34	90	63	15.9	9	50	14		

Metric Sizes													Unit : Metric	
Code	Model	Type	D1 (h6)	L1	H1	C1	C2	W1	K1	C3	H2	Clamp Bolt	Cutter dia. example	
1320 1 ※ 316075	<b>UTS10080 -FMH16 -75</b>	1	16	75	17	34	40	8	5	—	—	M8	40 50	
1320 1 ※ 316105	<b>-105</b>	1	16	105	17	34	40	8	5	—	—			
1320 1 ※ 316135	<b>-135</b>	1	16	135	17	34	40	8	5	—	—			
1320 1 ※ 322075	<b>UTS10080 -FMH22 -75</b>	1	22	75	18	45	45	10	5.6	—	—	M10	50 63	
1320 1 ※ 322105	<b>-105</b>	1	22	105	18	45	45	10	5.6	—	—			
1320 1 ※ 322135	<b>-135</b>	1	22	135	18	45	45	10	5.6	—	—			
1320 1 ※ 325075	<b>UTS10080 -FMH25.4 -75</b>	1	25.4	75	22	70	80	9.5	5	—	—	M12	80 100 125	
1320 1 ※ 325105	<b>-105</b>	1	25.4	105	22	70	80	9.5	5	—	—			
1320 1 ※ 325135	<b>-135</b>	1	25.4	135	22	70	80	9.5	5	—	—			
1320 1 ※ 331075	<b>UTS10080 -FMH31.75 -75</b>	1	31.75	75	30	80	80	12.7	7	—	—	M16	80 100	
1320 1 ※ 331105	<b>-105</b>	1	31.75	105	30	80	80	12.7	7	—	—			
1320 1 ※ 331135	<b>-135</b>	1	31.75	135	30	80	80	12.7	7	—	—			
1320 1 ※ 338075	<b>UTS10080 -FMH38.1 -75</b>	3	38.1	75	34	90	90	15.9	9	50	14	MBAH-M20	125	
1320 1 ※ 338105	<b>-105</b>	3	38.1	105	34	90	90	15.9	9	50	14			
1320 1 ※ 338135	<b>-135</b>	3	38.1	135	34	90	90	15.9	9	50	14			
1320 1 ※ 350075	<b>UTS10080 -FMH50.8 -75</b>	3	50.8	75	36	99	99	19.05	10	65	14	MBAH-M24	160	
1320 1 ※ 350105	<b>-105</b>	3	50.8	105	36	99	99	19.05	10	65	14			
1320 1 ※ 350135	<b>-135</b>	3	50.8	135	36	99	99	19.05	10	65	14			

When placing an order, please specify high or low pressure. For high pressure type, please add (-H) on end of the description.

1. UTS5040 is available in high pressure only.
2. Clamp bolt is included.

**Ordering Example**

**Low pressure type**  
 0 ~ 1.0MPa (UTS10080 : 0 ~ 2.0MPa)  
**UTS6350 - FMH 25.4 - 60**  
Shank size                      D1                      L1

**Ordering Example**

**High pressure type**  
 1.1 ~ 7.0MPa (UTS10080 : 2.1 ~ 7.0MPa)  
**UTS6350 - FMH 25.4 - 60 - H**  
Shank size                      D1                      L1                      High pressure type

