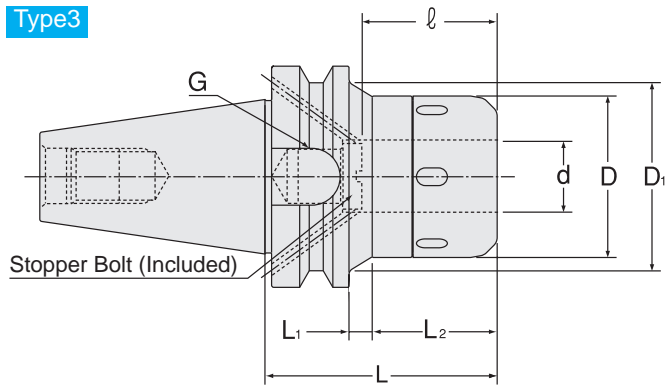
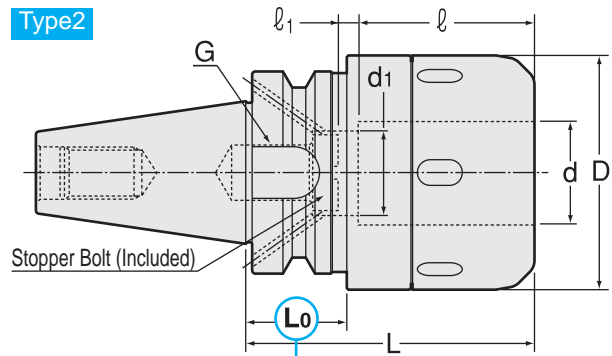
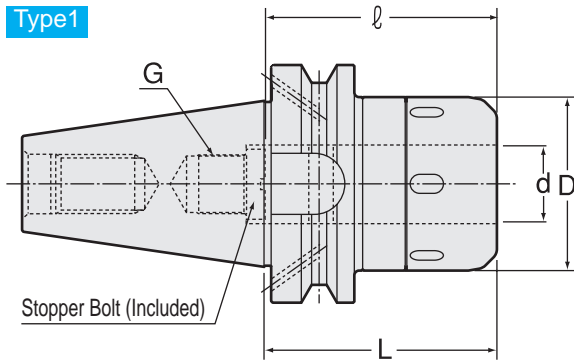


CT·S-CF

Super Tite-Lock Milling Chuck (Flange Through Type)

- Flange through coolant type milling chuck. DIN69871 Form B compliance.



⚠ Caution

- ★ Take caution against A.T.C. arm and tool magazine interference.

Caution

Please rotate the clamping ring counterclockwise more than 360 degrees after a cutting tool is removed.

- DIN69871 Form B
- Max. Coolant pressure : 7MPa

Metric Sizes

Unit : Metric

Code	Model	Type	d	D	D1	L	L1	L2	ℓ	ℓ1	d1	L0	$\frac{G}{P=1.0}$	Spanner
3146 00316075	BT40 -CT16S -75CF	1	16	45	—	75	—	—	60	—	—	—	10	HS-1-16
3146 00316090	-90CF	1	16	45	—	90	—	—	60	—	—	—	10	
3146 00320075	BT40 -CT20S -75CF	1	20	52	—	75	—	—	65	—	—	—	12	HS-2-20
3146 00320090	-90CF	1	20	52	—	90	—	—	75	—	—	—	12	
3146 00320105	-105CF	1	20	52	—	105	—	—	75	—	—	—	12	HS-2.5-25
3146 00320120	-120CF	1	20	52	—	120	—	—	75	—	—	—	12	
3146 00325090	BT40 -CT25S -90CF	1	25	61	—	90	—	—	75	—	—	—	12	
3146 00325105	-105CF	1	25	61	—	105	—	—	75	—	—	—	12	
3146 00325120	-120CF	1	25	61	—	120	—	—	75	—	—	—	12	HS-3-32
3146 00325135	-135CF	1	25	61	—	135	—	—	75	—	—	—	12	
3146 00332090	BT40 -CT32S -90CF	2	32	73	—	90	—	—	70	—	—	★ 31	18	
3146 00332105	-105CF	2	32	73	—	105	—	—	75	—	—	46	18	
3146 00332120	-120CF	2	32	73	—	120	—	—	85	5	26	61	18	HS-3-32
3146 00332135	-135CF	2	32	73	—	135	—	—	90	13	26	76	18	
3146 00516090	BT50 -CT16S -90CF	3	16	45	58	90	7	45	65	—	—	—	10	HS-1-16
3146 00516105	-105CF	3	16	45	70	105	22	45	60	—	—	—	10	
3146 00520090	BT50 -CT20S -90CF	3	20	52	65	90	7	45	80	—	—	—	12	HS-2-20
3146 00520105	-105CF	3	20	52	70	105	9	58	80	—	—	—	12	
3146 00520120	-120CF	3	20	52	70	120	24	58	80	—	—	—	12	
3146 00520135	-135CF	3	20	52	73	135	39	58	80	—	—	—	12	
3146 00525105	BT50 -CT25S -105CF	3	25	61	82	105	11	56	80	—	—	—	12	HS-2.5-25
3146 00525120	-120CF	3	25	61	82	120	26	56	80	—	—	—	12	
3146 00525135	-135CF	3	25	61	83	135	41	56	80	—	—	—	12	
3146 00525165	-165CF	3	25	61	86	165	71	56	80	—	—	—	12	

Metric Sizes Unit : Metric

Code	Model	Type	d	D	D1	L	L1	L2	ℓ	ℓ1	d1	L0	$\frac{G}{P=1.0}$	Spanner
3146 00532095	BT50 -CT32S -95CF	1	32	73	—	95	—	—	90	—	—	—	18	HS-3-32
3146 00532105	-105CF	1	32	73	—	105	—	—	90	—	—	—	18	
3146 00532120	-120CF	3	32	73	87	120	26	56	90	—	—	—	18	
3146 00532135	-135CF	3	32	73	88	135	41	56	90	—	—	—	18	
3146 00532150	-150CF	3	32	73	87	150	56	56	90	—	—	—	18	
3146 00532165	-165CF	3	32	73	86	165	71	56	90	—	—	—	18	
3146 00542095	BT50 -CT42S -95CF	1	42	88	—	95	—	—	90	—	—	—	18	HS-4-42
3146 00542105	-105CF	1	42	88	—	105	—	—	90	—	—	—	18	
3146 00542120	-120CF	1	42	88	—	120	—	—	90	—	—	—	18	
3146 00542135	-135CF	1	42	88	—	135	—	—	90	—	—	—	18	
3146 00542150	-150CF	1	42	88	—	150	—	—	90	—	—	—	18	
3146 00542165	-165CF	1	42	88	—	165	—	—	90	—	—	—	18	

1. When ordering, indicate number of spanners required. "No charge" spanners are limited to number of milling chucks on order.
2. Tolerance of cutting tool shank must be h7.
3. Stopper bolt (type BL) is included.
4. Only MC-C or MC-OH collet can be used.

Min. chucking length

Without MC collet

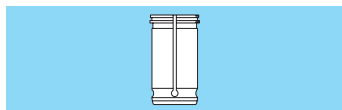
I.D. of Milling Chuck	Min. chucking length
16, 20	40
25, 32, 42	50

With MC collet

Collet I.D.	Min. chucking length	
	MC	MC-C, MC-OH
6, 8	30	30
10, 12	40	40
16, 20	45	45
25	50	50
32	50	60

MC-OH, MC-C Collet

P. 066-067



Spanner

P. 069



Ordering Example

BT30 - CT 16 S - 75 CF
 Shank size I.D. (d) Projection length (L)