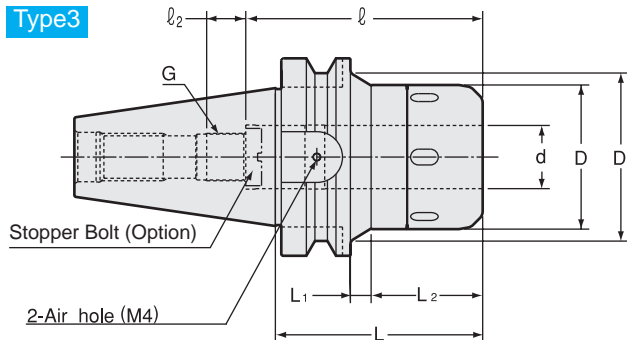
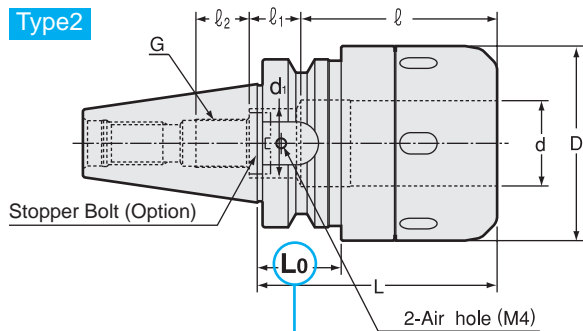
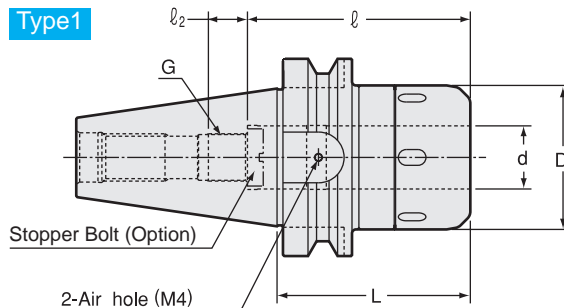
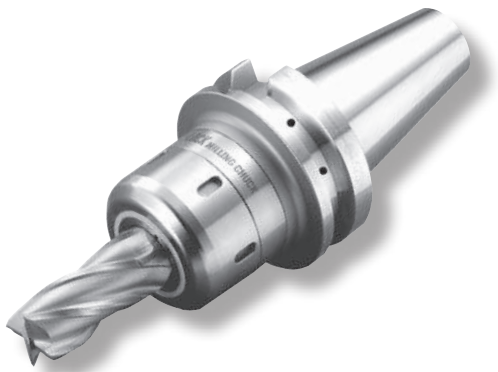


CT·S-E

Super Tite-Lock Milling Chuck (High-Balanced Type)

- Slim design milling chuck. Specially designed slits enables heavy end milling. (High balanced type for higher RPM)



Caution

- ★ Take caution against A.T.C. arm and tool magazine interference.

Caution

Please rotate the clamping ring counterclockwise more than 360 degrees after a cutting tool is removed.

Metric Sizes

Unit : Metric

Code	Model	Type	d	D	D1	L	L1	L2	ℓ	ℓ1	ℓ2	d1	L0	$P = 1.0$	kg	Spanner
3140 20116075	BT30 -CT16S -75E	1	16	45	—	75	—	—	65	—	15	—	—	10	0.9	HS-1-16
3140 20116090	-90E	1	16	45	—	90	—	—	65	—	15	—	—	10	1.1	
3140 20120075	BT30 -CT20S -75E * 1	2	20	52	—	75	—	—	65	—	15	—	★ 27	12	1.0	HS-2-20
3140 20120090	-90E	2	20	52	—	90	—	—	80	—	15	—	42	12	1.2	
3140 20120105	-105E	2	20	52	—	105	—	—	80	—	15	—	57	12	1.3	HS-2.5-25
3140 20125090	BT30 -CT25S -90E	2	25	61	—	90	—	—	80	—	15	—	★ 31	12	1.4	
3140 20125105	-105E	2	25	61	—	105	—	—	80	—	15	—	44	12	1.6	
3140 20316075	BT40 -CT16S -75E	1	16	45	—	75	—	—	65	—	15	—	—	10	1.4	HS-1-16
3140 20316090	-90E	1	16	45	—	90	—	—	65	—	15	—	—	10	1.6	
3140 20320075	BT40 -CT20S -75E	1	20	52	—	75	—	—	75	—	15	—	—	15	1.5	HS-2-20
3140 20320090	-90E	1	20	52	—	90	—	—	80	—	15	—	—	15	1.8	
3140 20320105	-105E	1	20	52	—	105	—	—	80	—	15	—	—	15	2.1	HS-2.5-25
3140 20320120	-120E	1	20	52	—	120	—	—	80	—	15	—	—	15	2.2	
3140 20325090	BT40 -CT25S -90E	1	25	61	—	90	—	—	80	—	15	—	—	15	2.0	HS-2.5-25
3140 20325105	-105E	1	25	61	—	105	—	—	80	—	15	—	—	15	2.3	
3140 20325120	-120E	1	25	61	—	120	—	—	80	—	15	—	—	15	2.7	HS-3-32
3140 20325135	-135E	1	25	61	—	135	—	—	80	—	15	—	—	15	3.0	
3140 20332090	BT40 -CT32S -90E * 2	2	32	73	—	90	—	—	76	32	17	26	★ 31	18	2.3	HS-3-32
3140 20332105	-105E * 3	2	32	73	—	105	—	—	85	23	17	26	46	18	2.6	
3140 20332120	-120E * 3	2	32	73	—	120	—	—	85	23	17	26	61	18	2.9	
3140 20332135	-135E	2	32	73	—	135	—	—	120	—	17	26	76	18	3.1	

Metric Sizes Unit : Metric

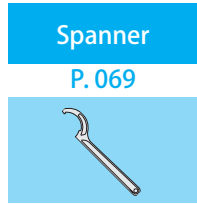
Code	Model	Type	d	D	D1	L	L1	L2	ℓ	ℓ1	ℓ2	d1	L0	$\frac{G}{P=1.0}$	kg	Spanner
3140 20516090	BT50 -CT16S -90E	3	16	45	58	90	7	45	65	-	20	-	-	10	4.1	HS-1-16
3140 20516105	-105E	3	16	45	70	105	22	45	65	-	20	-	-	10	4.4	
3140 20520090	BT50 -CT20S -90E	3	20	52	65	90	7	45	80	-	15	-	-	12	4.2	HS-2-20
3140 20520105	-105E	3	20	52	70	105	9	58	80	-	15	-	-	12	4.5	
3140 20520120	-120E	3	20	52	70	120	24	58	80	-	15	-	-	12	4.7	
3140 20520135	-135E	3	20	52	73	135	39	58	80	-	15	-	-	12	5.3	
3140 20525105	BT50 -CT25S -105E	3	25	61	82	105	11	56	80	-	15	-	-	12	4.8	HS-2.5-25
3140 20525120	-120E	3	25	61	82	120	26	56	80	-	15	-	-	12	5.2	
3140 20525135	-135E	3	25	61	83	135	41	56	80	-	15	-	-	12	5.6	
3140 20525165	-165E	3	25	61	86	165	71	56	80	-	15	-	-	12	6.6	
3140 20532095	BT50 -CT32S -95E	1	32	73	-	95	-	-	120	-	20	-	-	18	4.6	HS-3-32
3140 20532105	-105E	1	32	73	-	105	-	-	120	-	20	-	-	18	4.9	
3140 20532120	-120E	3	32	73	87	120	26	56	120	-	20	-	-	18	5.6	
3140 20532135	-135E	3	32	73	88	135	41	56	120	-	20	-	-	18	6.1	
3140 20532150	-150E	3	32	73	87	150	56	56	120	-	20	-	-	18	6.7	
3140 20532165	-165E	3	32	73	86	165	71	56	120	-	20	-	-	18	7.1	
3140 20542095	BT50 -CT42S -95E * 4	1	42	88	-	95	-	-	120	-	20	-	-	18	4.9	HS-4-42
3140 20542105	-105E * 4	1	42	88	-	105	-	-	120	-	20	-	-	18	5.4	
3140 20542120	-120E	1	42	88	-	120	-	-	120	-	20	-	-	18	6.0	
3140 20542135	-135E	1	42	88	-	135	-	-	120	-	20	-	-	18	6.7	
3140 20542150	-150E	1	42	88	-	150	-	-	120	-	20	-	-	18	7.4	
3140 20542165	-165E	1	42	88	-	165	-	-	120	-	20	-	-	18	8.0	

1. Use 2pcs. of M4 x 5 (S) hex. screw (included) to close air holes on the holder when internal coolant is used.
2. When ordering, indicate number of spanners required. "No charge" spanners are limited to number of milling chucks on order.
3. Tolerance of cutting tool shank must be h7.

Ordering Example

BT30 - CT 16 S - 75 E

Shank size I.D. (d) Projection length (L)



Accessories

Models with * 1 - * 4 cannot be used with some accessories due to short ℓ length.

	Stopper Bolt	Straight Collet		Morse Taper Adapter		Jacobs Adapter	
	BL (P.068)	MC (P.066)	MCA (P.067)	MA (P.068)	MAB (P.068)	JA (P.069)	JAB (P.069)
* 1	Yes	Yes	No	No	No	No	No
* 2	Yes	Yes	No	No	Yes	No	Yes
* 3	Yes	Yes	Yes	No	Yes	No	Yes
* 4	Yes	Yes	No	Yes	Yes	Yes	Yes

Min. chucking length

Without MC collet

I.D. of Milling Chuck	Min. chucking length
16, 20	40
25, 32, 42	50

With MC collet

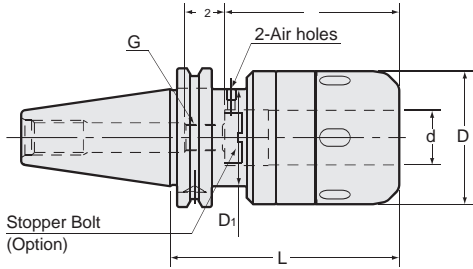
Collet I.D.	Min. chucking length	
	MC	MC-C, MC-OH
6, 8	30	30
10, 12	40	40
16, 20	45	45
25	50	50
32	50	60

CT·S·E

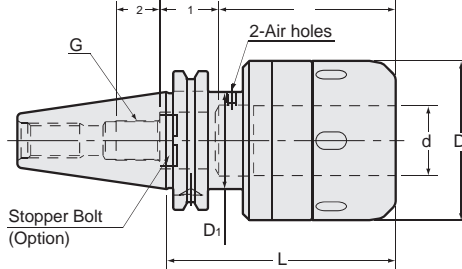
Super Tite-Lock Milling Chuck (High-Balanced Type)

● Slim design milling chuck. Specially designed slits enables heavy endmilling. (High balanced type)

Type 1



Type 2



Caution

Please rotate the clamping ring counterclockwise more than 360 degrees after a cutting tool is removed.

Inch Sizes Unit : Inch

Code	Model	Type	d	D	D1	L	I	I1	I2	G P=1.0
1910 11424090	CAT40 -CT0750S -90E	1	0.750	2.047	1.750	3.543	3.150	—	0.591	M12
1910 11424105	-105E	1	0.750	2.047	1.750	4.134	3.150	—	0.591	M12
1910 11424120	-120E	1	0.750	2.047	1.750	4.724	3.150	—	0.591	M12
1910 11432105	CAT40 -CT1000S -105E	1	1.000	2.402	1.750	4.134	3.150	—	0.591	M12
1910 11432120	-120E	1	1.000	2.402	1.750	4.724	3.150	—	0.591	M12
1910 11432135	-135E	1	1.000	2.402	1.750	5.315	3.150	—	0.591	M12
1910 11440105	CAT40 -CT1250S -105E	2	1.250	2.874	1.750	4.134	3.346	0.906	0.787	M18
1910 11440120	-120E	2	1.250	2.874	1.750	4.724	3.346	0.906	0.787	M18
1910 11440135	-135E	2	1.250	2.874	1.750	5.315	4.724	—	0.787	M18
1910 11524090	CAT50 -CT0750S -90E	1	0.750	2.047	2.750	3.543	3.150	—	0.591	M12
1910 11524105	-105E	1	0.750	2.047	2.750	4.134	3.150	—	0.591	M12
1910 11524135	-135E	1	0.750	2.047	2.750	5.315	3.150	—	0.591	M12
1910 11532105	CAT50 -CT1000S -105E	1	1.000	2.402	2.750	4.134	3.150	—	0.591	M12
1910 11532135	-135E	1	1.000	2.402	2.750	5.315	3.150	—	0.591	M12
1910 11532165	-165E	1	1.000	2.402	2.750	6.496	3.150	—	0.591	M12
1910 11540095	CAT50 -CT1250S -95E	1	1.250	2.874	2.750	3.740	4.724	—	0.787	M18
1910 11540105	-105E	1	1.250	2.874	2.750	4.134	4.724	—	0.787	M18
1910 11540120	-120E	1	1.250	2.874	2.750	4.724	4.724	—	0.787	M18
1910 11540135	-135E	1	1.250	2.874	2.750	5.315	4.724	—	0.787	M18
1910 11540150	-150E	1	1.250	2.874	2.750	5.906	4.724	—	0.787	M18
1910 11540165	-165E	1	1.250	2.874	2.750	6.496	4.724	—	0.787	M18
1910 11564105	CAT50 -CT2000S -105E	1	2.000	4.134	2.750	4.134	3.937	—	0.787	M18
1910 11564120	-120E	1	2.000	4.134	2.750	4.724	3.937	—	0.787	M18
1910 11564135	-135E	1	2.000	4.134	2.750	5.315	3.937	—	0.787	M18
1910 11564150	-150E	1	2.000	4.134	2.750	5.906	3.937	—	0.787	M18
1910 11564165	-165E	1	2.000	4.134	2.750	6.496	3.937	—	0.787	M18

1. Use 2pcs. of M4 x 5 (S) hex. screw to close air holes on the holder when internal coolant is used.
2. When ordering, indicate number of spanners required. "No charge" spanners are limited to number of milling chucks on order.
3. Tolerance of cutting tool shank must be h7.

Spanner

P. 069



Ordering Example

CAT40 - CT 0750 S - 90 E

Shank size I.D. (d) Projection length (L)

Accessories

Stopper Bolt BL (P.068)	Straight Collet MC (P.066) MCA (P.067)	Morse Taper Adapter MA (P.068) MAB (P.068)	Jacobs Adapter JA (P.069) JAB (P.069)
--------------------------	---	---	--

Min. chucking length

Direct Chucking (without MC Collet)

Model	Min. chucking length
CT0750S	40mm
CT1000S, CT1250S CT2000S	50mm

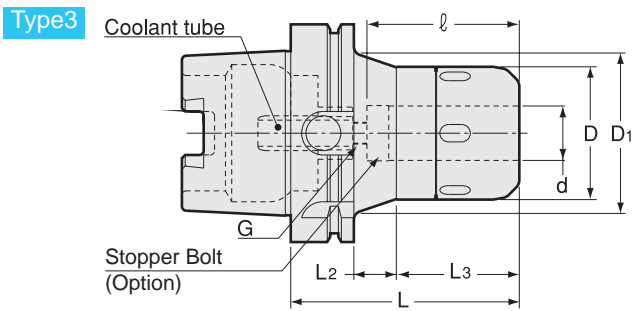
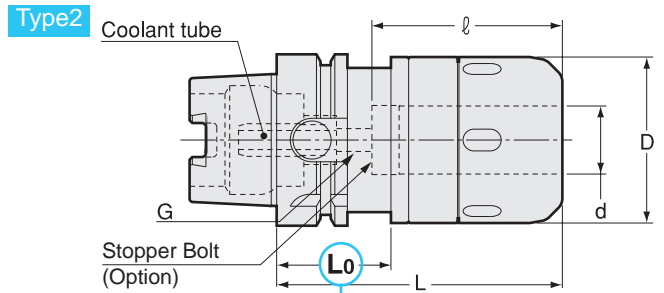
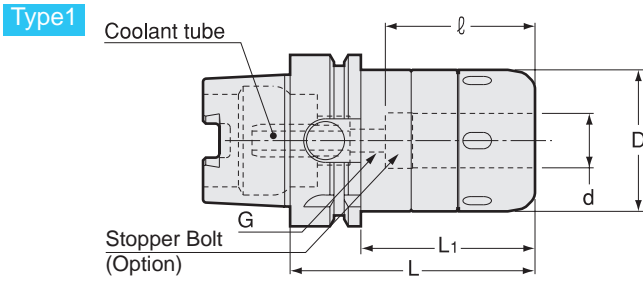
With MC Collet

Collet I.D.	Min. chucking length	
	MC	MC-C, MC-OH
1/4, 5/16	30mm	30mm
3/8, 1/2	40mm	40mm
5/8, 3/4, 7/8	45mm	45mm
1	50mm	50mm
1-1/4	50mm	60mm
1-1/2	50mm	60mm

CT·S·E

Super Tite-Lock Milling Chuck (High-Balanced Type)

● Slim design milling chuck. Specially designed slits enables heavy end milling. (High balanced type for higher RPM)



Caution
★ Take caution against A.T.C. arm and tool magazine interference.

Caution
Please rotate the clamping ring counterclockwise more than 360 degrees after a cutting tool is removed.

● Coolant tube is included.

Inch Sizes															Unit : Inch	
Code	Model	Type	d	D	D1	L	L1	L2	L3	ℓ	L0	G	kg	Spanner		
5690 13324090	HSK40A -CT0750S - 90E	2	0.750	2.047	-	3.543	-	-	-	2.362	1.378	M5	1.0	HS-2-20		
5690 13332105	HSK40A -CT1000S -105E	2	1.000	2.402	-	4.134	-	-	-	2.362	1.378	M5		HS-2.5-25		
5690 15324090	HSK63A -CT0750S - 90E	1	0.750	2.047	-	3.543	2.520	-	-	2.362	-	M8		HS-2-20		
5690 15324105	-105E	1	0.750	2.047	-	4.134	3.110	-	-	2.953	-	M8				
5690 15324135	-135E	1	0.750	2.047	-	5.315	4.291	-	-	3.150	-	M8		HS-2.5-25		
5690 15332105	HSK63A -CT1000S -105E	2	1.000	2.402	-	4.134	-	-	-	2.953	1.654	M8				
5690 15332120	-120E	2	1.000	2.402	-	4.724	-	-	-	2.953	1.654	M8		HS-2.5-25		
5690 15332135	-135E	2	1.000	2.402	-	5.315	-	-	-	3.150	1.654	M8				
5690 15340105	HSK63A -CT1250S -105E	2	1.250	2.874	-	4.134	-	-	-	2.953	1.654	M8		HS-3-32		
5690 15340120	-120E	2	1.250	2.874	-	4.724	-	-	-	3.543	1.654	M8				
5690 15340150	-150E	2	1.250	2.874	-	5.906	-	-	-	4.724	1.654	M8				
5690 17324090	HSK100A -CT0750S - 90E *	3	0.750	2.047	2.913	3.543	-	0.630	1.772	2.165	-	M10		HS-2-20		
5690 17324105	-105E	3	0.750	2.047	2.913	4.134	-	1.220	1.772	2.756	-	M10				
5690 17324135	-135E	3	0.750	2.047	2.913	5.315	-	2.402	1.772	3.150	-	M10				
5690 17324150	-150E	3	0.750	2.047	2.913	5.906	-	2.992	1.772	3.150	-	M10				
5690 17332090	HSK100A -CT1000S - 90E *	1	1.000	2.402	-	3.543	2.402	-	-	2.165	-	M10		HS-2.5-25		
5690 17332105	-105E	3	1.000	2.402	2.913	4.134	-	0.787	2.205	2.756	-	M10	3.5			
5690 17332135	-135E	3	1.000	2.402	2.913	5.315	-	1.969	2.205	3.150	-	M10				
5690 17332150	-150E	3	1.000	2.402	2.913	5.906	-	2.559	2.205	3.150	-	M10				
5690 17340090	HSK100A -CT1250S - 90E *	1	1.250	2.874	-	3.543	2.402	-	-	2.165	-	M10		HS-3-32		
5690 17340105	-105E	1	1.250	2.874	-	4.134	2.992	-	-	2.756	-	M10	3.9			
5690 17340120	-120E	1	1.250	2.874	-	4.724	3.583	-	-	3.346	-	M10				
5690 17340135	-135E	1	1.250	2.874	-	5.315	4.173	-	-	3.937	-	M10				
5690 17340150	-150E	1	1.250	2.874	-	5.906	4.764	-	-	4.528	-	M10		HS-4V		
5690 17364110	HSK100A -CT2000S -110E *	2	2.000	4.134	-	4.331	-	-	-	2.756	1.772	M10				
5690 17364135	-135E	2	2.000	4.134	-	5.315	-	-	-	3.937	1.772	M10				
5690 17364150	-150E	2	2.000	4.134	-	5.906	-	-	-	4.331	1.772	M10				
5690 17364165	-165E	2	2.000	4.134	-	6.496	-	-	-	4.724	1.772	M10				

1. When ordering, indicate number of spanners required. "No charge" spanners are limited to number of milling chucks on order.
2. Tolerance of cutting tool shank must be h7.

Ordering Example

HSK40A - CT 0750 S - 90 E
 Shank size I.D. (d) Projection length (L)

Metric Sizes

Unit : Metric

Code	Model	Type	d	D	D1	L	L1	L2	L3	ℓ	L0	G	kg	Spanner
5690 13216075	HSK40A -CT16S -75E * 1	2	16	45	-	75	-	-	-	50	★ 26	M5	0.8	HS-1-16
5690 13216090	-90E * 1	2	16	45	-	90	-	-	-	60	35	M5	0.9	
5690 13220090	HSK40A -CT20S -90E * 2	2	20	52	-	90	-	-	-	60	35	M5	1.0	HS-2-20
5690 13220105	-105E * 2	2	20	52	-	105	-	-	-	60	35	M5	1.2	
5690 13225105	HSK40A -CT25S -105E * 2	2	25	61	-	105	-	-	-	60	35	M5	1.6	HS-2.5-25
5690 14216090	HSK50A -CT16S -90E * 1	2	16	45	-	90	-	-	-	60	42	M5	1.1	HS-1-16
5690 14220090	HSK50A -CT20S -90E * 2	2	20	52	-	90	-	-	-	60	42	M5	1.2	HS-2-20
5690 14220105	-105E * 2	2	20	52	-	105	-	-	-	60	42	M5	1.4	
5690 14225105	HSK50A -CT25S -105E * 1	2	25	61	-	105	-	-	-	75	42	M5	1.6	HS-2.5-25
5690 15216075	HSK63A -CT16S -75E * 2	1	16	45	-	75	49	-	-	47	-	M8	1.2	HS-1-16
5690 15216090	-90E	1	16	45	-	90	64	-	-	60	-	M8	1.3	
5690 15220090	HSK63A -CT20S -90E * 2	1	20	52	-	90	64	-	-	60	-	M8	1.5	HS-2-20
5690 15220105	-105E * 1	1	20	52	-	105	79	-	-	75	-	M8	1.7	
5690 15220135	-135E * 1	1	20	52	-	135	109	-	-	80	-	M8	2.2	
5690 15225105	HSK63A -CT25S -105E * 1	2	25	61	-	105	-	-	-	75	42	M8	2.0	HS-2.5-25
5690 15225120	-120E * 1	2	25	61	-	120	-	-	-	75	42	M8	2.3	
5690 15225135	-135E * 1	2	25	61	-	135	-	-	-	80	42	M8	2.7	
5690 15232105	HSK63A -CT32S -105E * 3	2	32	73	-	105	-	-	-	75	42	M8	2.4	HS-3-32
5690 15232120	-120E * 3	2	32	73	-	120	-	-	-	90	42	M8	2.7	
5690 15232150	-150E * 1	2	32	73	-	150	-	-	-	120	42	M8	3.5	
5690 17216090	HSK100A -CT16S -90E * 2	3	16	45	56	90	-	16	45	55	-	M10	2.7	HS-1-16
5690 17216105	-105E	3	16	45	56	105	-	31	45	70	-	M10	2.9	
5690 17220090	HSK100A -CT20S -90E * 6	3	20	52	64	90	-	16	45	55	-	M10	2.9	HS-2-20
5690 17220105	-105E * 4	3	20	52	64	105	-	18	58	70	-	M10	3.3	
5690 17220120	-120E	3	20	52	64	120	-	33	58	80	-	M10	3.5	
5690 17220135	-135E	3	20	52	64	135	-	48	58	80	-	M10	3.7	
5690 17220150	-150E	3	20	52	64	150	-	63	58	80	-	M10	4.1	
5690 17225090	HSK100A -CT25S -90E * 6	1	25	61	-	90	61	-	-	55	-	M10	3.1	
5690 17225105	-105E * 5	3	25	61	74	105	-	20	56	70	-	M10	3.5	HS-2.5-25
5690 17225120	-120E	3	25	61	74	120	-	35	56	80	-	M10	3.9	
5690 17225135	-135E	3	25	61	74	135	-	50	56	80	-	M10	4.3	
5690 17225150	-150E	3	25	61	73	150	-	65	56	80	-	M10	4.7	
5690 17232090	HSK100A -CT32S -90E * 6	1	32	73	-	90	61	-	-	55	-	M10	3.6	HS-3-32
5690 17232105	-105E * 2	1	32	73	-	105	76	-	-	70	-	M10	4.0	
5690 17232120	-120E * 3	1	32	73	-	120	91	-	-	85	-	M10	4.4	
5690 17232135	-135E * 1	1	32	73	-	135	106	-	-	100	-	M10	4.8	
5690 17232150	-150E * 1	1	32	73	-	150	121	-	-	115	-	M10	5.2	
5690 17242105	HSK100A -CT42S -105E * 6	2	42	88	-	105	-	-	-	70	45	M10	4.7	HS-4-42
5690 17242120	-120E * 2	2	42	88	-	120	-	-	-	85	45	M10	5.2	
5690 17242135	-135E * 2	2	42	88	-	135	-	-	-	100	45	M10	5.8	
5690 17242150	-150E * 2	2	42	88	-	150	-	-	-	110	45	M10	6.4	
5690 17242165	-165E * 1	2	42	88	-	165	-	-	-	120	45	M10	7.0	

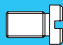
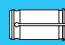


- When ordering, indicate number of spanners required.
"No charge" spanners are limited to number of milling chucks on order.
- Tolerance of cutting tool shank must be h7.

Ordering Example

HSK40A - CT 16 S - 75 E
 Shank size I.D. (d) Projection length (L)

Accessories

Models with * 1 - * 6 cannot be used with some accessories due to short ℓ length.

	Stopper Bolt 	Straight Collet 		Morse Taper Adapter 		Jacobs Adapter 	
	BL (P.295)	MC (P.066)	MCA (P.067)	MA (P.068)	MAB (P.068)	JA (P.069)	JAB (P.069)
* 1	Yes	Yes	No	Yes	Yes	Yes	Yes
* 2	Yes	Yes	No	No	No	No	No
* 3	Yes	Yes	No	No	Yes	No	Yes
* 4	Yes	Yes	Yes	Yes	No	Yes	No
* 5	Yes	Yes	Yes	No	No	Yes	No
* 6	Yes	No	No	No	No	No	No

Spanner

P. 069



Min. chucking length

Without MC collet

I.D. of Milling Chuck	Min. chucking length
16, 20	40
25, 32, 42	50

With MC collet

Collet I.D.	Min. chucking length	
	MC	MC-C, MC-OH
6, 8	30	30
10, 12	40	40
16, 20	45	45
25	50	50
32	50	60

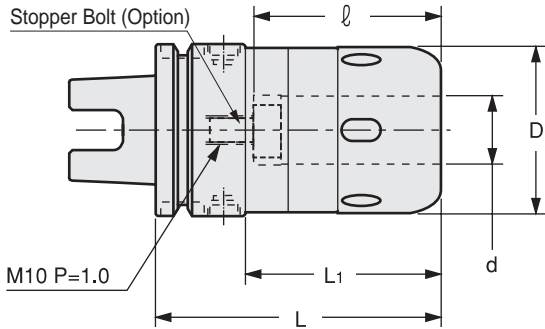
BT
 CAT
 AHO
 HSK-A/E/F/C
 HSK-T
 UTS
 Specialized Machine
 Related Equipment
 Bush & Chamfering Drill
 Milling Chuck
 Collet Holder
 "R" Zero Holder
 Hydraulic Chuck
 Shrink Fit
 Tapping Chuck
 Arbors
 Function Holder
 HSK-E
 HSK-F
 HSK-C
 Tool Shank Dimensions

CT·S-E

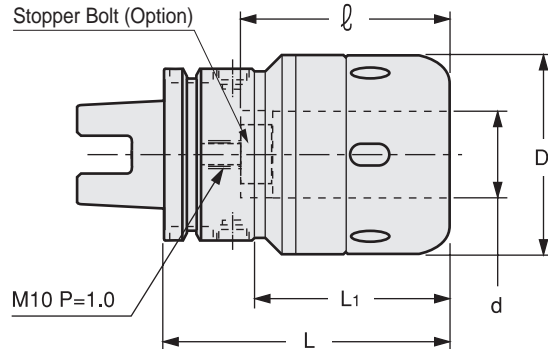
Super Tite-Lock Milling Chuck (High-Balanced Type)

● Slim design milling chuck. Specially designed slits enables heavy endmilling. (High balanced type for higher RPM)

Type1



Type2



Caution

Please rotate the clamping ring counterclockwise more than 360 degrees after a cutting tool is removed.

Metric Sizes

Unit : Metric


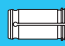


Code	Model	Type	d	D	L	L1	l	kg	Spanner
1360 21116090	UTS5040 -CT16S -90E-H * 1	1	16	45	90	60	60	1.1	HS-1-16
1360 21120090	UTS5040 -CT20S -90E-H * 5	2	20	52	90	60	60	1.3	HS-2-20
1360 21120105	-105E-H * 1	2	20	52	105	75	75	1.5	HS-2-20
1360 21125105	UTS5040 -CT25S -105E-H * 1	2	25	61	105	75	75	1.8	HS-2.5-25
1360 2 ※ 216090	UTS6350 -CT16S -90E	1	16	45	90	57	65	1.4	HS-1-16
1360 2 ※ 220090	UTS6350 -CT20S -90E * 5	1	20	52	90	57	65	1.6	HS-2-20
1360 2 ※ 220105	-105E	1	20	52	105	72	75	1.8	HS-2-20
1360 2 ※ 220135	-135E	1	20	52	135	102	80	2.3	HS-2-20
1360 2 ※ 225105	UTS6350 -CT25S -105E	1	25	61	105	72	75	2.1	HS-2.5-25
1360 2 ※ 225120	-120E	1	25	61	120	87	75	2.5	HS-2.5-25
1360 2 ※ 225135	-135E	1	25	61	135	102	80	2.8	HS-2.5-25
1360 2 ※ 232105	UTS6350 -CT32S -105E * 2	2	32	73	105	72	80	2.5	HS-3-32
1360 2 ※ 232120	-120E * 2	2	32	73	120	87	90	2.8	HS-3-32
1360 2 ※ 232150	-150E * 1	2	32	73	150	117	120	3.3	HS-3-32
1360 2 ※ 316090	UTS10080 -CT16S -90E	1	16	45	90	56	65	2.9	HS-1-16
1360 2 ※ 316105	-105E	1	16	45	105	71	65	3.1	HS-1-16
1360 2 ※ 320090	UTS10080 -CT20S -90E * 5	1	20	52	90	56	65	3.1	HS-2-20
1360 2 ※ 320105	-105E * 3	1	20	52	105	71	70	3.3	HS-2-20
1360 2 ※ 320120	-120E	1	20	52	120	86	80	3.9	HS-2-20
1360 2 ※ 320135	-135E	1	20	52	135	101	80	4.2	HS-2-20
1360 2 ※ 320150	-150E	1	20	52	150	116	80	4.0	HS-2-20
1360 2 ※ 325105	UTS10080 -CT25S -105E * 4	1	25	61	105	71	70	3.6	HS-2.5-25
1360 2 ※ 325120	-120E	1	25	61	120	86	80	3.9	HS-2.5-25
1360 2 ※ 325135	-135E	1	25	61	135	101	80	4.3	HS-2.5-25
1360 2 ※ 325150	-150E	1	25	61	150	116	80	4.6	HS-2.5-25
1360 2 ※ 332105	UTS10080 -CT32S -105E * 5	1	32	73	105	71	70	4.1	HS-3-32
1360 2 ※ 332120	-120E * 2	1	32	73	120	86	85	4.5	HS-3-32
1360 2 ※ 332135	-135E * 1	1	32	73	135	101	100	5.0	HS-3-32
1360 2 ※ 332150	-150E * 1	1	32	73	150	116	115	5.3	HS-3-32
1360 2 ※ 342120	UTS10080 -CT42S -120E * 5	1	42	88	120	86	85	5.4	HS-4-42
1360 2 ※ 342135	-135E * 5	1	42	88	135	101	100	5.9	HS-4-42
1360 2 ※ 342150	-150E * 5	1	42	88	150	116	110	6.5	HS-4-42
1360 2 ※ 342165	-165E * 1	1	42	88	165	131	120	7.1	HS-4-42

When placing an order, please specify high or low pressure. For high pressure type, please add (-H) on end of the description.

1. When ordering, indicate number of spanners required. "No charge" spanners are limited to number of milling chucks on order.
2. Tolerance of cutting tool shank must be h7.
3. UTS5040 is available in high pressure only.

Accessories

Models with * 1 - * 5 cannot be used with some accessories due to short *ℓ* length.

	Stopper Bolt 	Straight Collet 		Morse Taper Adapter 		Jacobs Adapter 	
	BL (P.389)	MC (P.066)	MCA (P.067)	MA (P.068)	MAB (P.068)	JA (P.069)	JAB (P.069)
* 1	BL16 only	Yes	No	Yes	Yes	Yes	Yes
* 2	BL16 only	Yes	No	No	Yes	No	Yes
* 3	BL16 only	Yes	Yes	Yes	No	Yes	No
* 4	BL16 only	Yes	Yes	No	No	Yes	No
* 5	BL16 only	Yes	No	No	No	No	No

Min. chucking length

Without MC collet

I.D.of Milling Chuck	Min. chucking length
16、 20	40
25、 32、 42	50

With MC collet

Collet I.D.	Min. chucking length	
	MC	MC-C、 MC-OH
6、 8	30	30
10、 12	40	40
16、 20	45	45
25	50	50
32	50	60

Spanner

P. 069



Ordering Example

Low pressure type

0 ~ 1.0MPa (UTS10080 : 0 ~ 2.0MPa)

UTS6350 - CT 32 S - 105 E
 Shank size I.D. (d) Projection length (L)

Ordering Example

High pressure type

1.1 ~ 7.0MPa (UTS10080 : 2.1 ~ 7.0MPa)

UTS6350 - CT 32 S - 105 E - H
 Shank size I.D. (d) Projection length (L) High pressure type