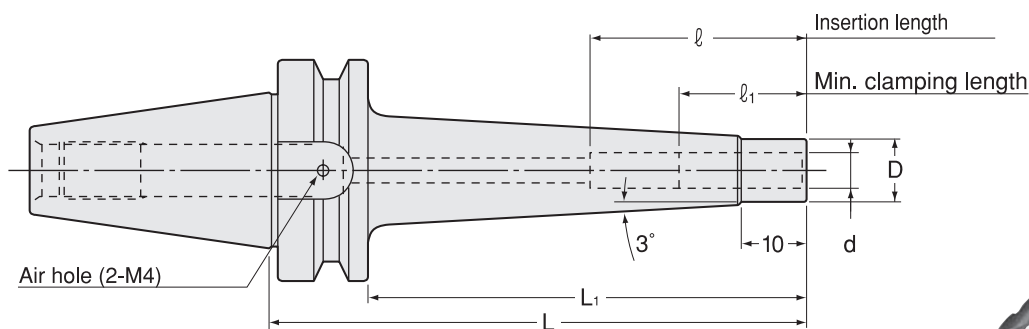


## Shrink Fit ( Slim Type )

- Shrinkage method clamps a cutting tool firmly by heating and cooling the chuck. High precision and strong Clamping force. (Slim Type)



## Inch Sizes

Unit : Inch

Code	Model	d	L	L1	D	I	I1
3060 33108105	<b>BT30</b> -SRS0250A -105	0.250	4.134	3.268	0.374	1.024	1.417
3060 33108135	-135	0.250	5.315	4.449	0.374	1.024	1.417
3060 33110105	<b>BT30</b> -SRS0312A -105	0.312	4.134	3.268	0.433	1.024	1.969
3060 33110135	-135	0.312	5.315	4.449	0.433	1.024	1.969
3060 33112105	<b>BT30</b> -SRS0375A -105	0.375	4.134	3.268	0.512	1.260	1.969
3060 33112135	-135	0.375	5.315	4.449	0.512	1.260	1.969
3060 33116105	<b>BT30</b> -SRS0500A -105	0.500	4.134	3.268	0.591	1.457	2.756
3060 33116135	-135	0.500	5.315	4.449	0.591	1.457	2.756
3060 33120105	<b>BT30</b> -SRS0625A -105	0.625	4.134	3.268	0.787	1.575	3.150
3060 33120135	-135	0.625	5.315	4.449	0.787	1.575	3.150
3060 33308105	<b>BT40</b> -SRS0250A -105	0.250	4.134	3.071	0.374	1.024	1.417
3060 33308135	-135	0.250	5.315	4.252	0.374	1.024	1.417
3060 33310105	<b>BT40</b> -SRS0312A -105	0.312	4.134	3.071	0.433	1.024	1.969
3060 33310135	-135	0.312	5.315	4.252	0.433	1.024	1.969
3060 33312105	<b>BT40</b> -SRS0375A -105	0.375	4.134	3.071	0.512	1.260	1.969
3060 33312135	-135	0.375	5.315	4.252	0.512	1.260	1.969
3060 33312165	-165	0.375	6.496	5.433	0.512	1.260	1.969
3060 33316105	<b>BT40</b> -SRS0500A -105	0.500	4.134	3.071	0.591	1.457	2.756
3060 33316135	-135	0.500	5.315	4.252	0.591	1.457	2.756
3060 33316165	-165	0.500	6.496	5.433	0.591	1.457	2.756
3060 33320105	<b>BT40</b> -SRS0625A -105	0.625	4.134	3.071	0.787	1.575	3.150
3060 33320135	-135	0.625	5.315	4.252	0.787	1.575	3.150
3060 33320165	-165	0.625	6.496	5.433	0.787	1.575	3.150
3060 33324105	<b>BT40</b> -SRS0750A -105	0.750	4.134	3.071	1.024	1.654	3.937
3060 33324135	-135	0.750	5.315	4.252	1.024	1.654	3.937
3060 33324165	-165	0.750	6.496	5.433	1.024	1.654	3.937
3060 33508105	<b>BT50</b> -SRS0250A -105	0.250	4.134	2.638	0.374	1.024	1.417
3060 33508135	-135	0.250	5.315	3.819	0.374	1.024	1.417
3060 33510105	<b>BT50</b> -SRS0312A -105	0.312	4.134	2.638	0.433	1.024	1.969
3060 33510135	-135	0.312	5.315	3.819	0.433	1.024	1.969
3060 33512105	<b>BT50</b> -SRS0375A -105	0.375	4.134	2.638	0.512	1.260	1.969
3060 33512135	-135	0.375	5.315	3.819	0.512	1.260	1.969
3060 33512165	-165	0.375	6.496	5.000	0.512	1.260	1.969
3060 33512195	-195	0.375	7.677	6.181	0.512	1.260	1.969
3060 33516105	<b>BT50</b> -SRS0500A -105	0.500	4.134	2.638	0.591	1.457	2.756
3060 33516135	-135	0.500	5.315	3.819	0.591	1.457	2.756
3060 33516165	-165	0.500	6.496	5.000	0.591	1.457	2.756
3060 33516195	-195	0.500	7.677	6.181	0.591	1.457	2.756
3060 33520105	<b>BT50</b> -SRS0625A -105	0.625	4.134	2.638	0.787	1.575	3.150
3060 33520135	-135	0.625	5.315	3.819	0.787	1.575	3.150
3060 33520165	-165	0.625	6.496	5.000	0.787	1.575	3.150
3060 33520195	-195	0.625	7.677	6.181	0.787	1.575	3.150
3060 33524105	<b>BT50</b> -SRS0750A -105	0.750	4.134	2.638	1.024	1.654	3.937
3060 33524135	-135	0.750	5.315	3.819	1.024	1.654	3.937
3060 33524165	-165	0.750	6.496	5.000	1.024	1.654	3.937
3060 33524195	-195	0.750	7.677	6.181	1.024	1.654	3.937

**Metric Sizes**

Unit : Metric

Code	Model	d	L	L1	D	ℓ1	ℓ	kg
3060 31206105	<b>BT30 -SRS6A -105</b>	6	105	83	9	26	26 ~ 36	0.6
3060 31206135	<b>-135</b>	6	135	113	9	26	26 ~ 36	0.6
3060 31208105	<b>BT30 -SRS8A -105</b>	8	105	83	11	26	26 ~ 50	0.7
3060 31208135	<b>-135</b>	8	135	113	11	26	26 ~ 50	0.7
3060 31110105	<b>BT30 -SRS10A -105</b>	10	105	83	13	32	32 ~ 50	0.7
3060 31110135	<b>-135</b>	10	135	113	13	32	32 ~ 50	0.7
3060 31112105	<b>BT30 -SRS12A -105</b>	12	105	83	15	37	37 ~ 70	0.7
3060 31112135	<b>-135</b>	12	135	113	15	37	37 ~ 70	0.8
3060 31116105	<b>BT30 -SRS16A -105</b>	16	105	83	20	40	40 ~ 80	0.8
3060 31116135	<b>-135</b>	16	135	113	20	40	40 ~ 80	0.8
3060 31306105	<b>BT40 -SRS6A -105</b>	6	105	78	9	26	26 ~ 36	1.1
3060 31306135	<b>-135</b>	6	135	108	9	26	26 ~ 36	1.1
3060 31306165	<b>-165</b>	6	165	138	9	26	26 ~ 36	
3060 31308105	<b>BT40 -SRS8A -105</b>	8	105	78	11	26	26 ~ 50	1.2
3060 31308135	<b>-135</b>	8	135	108	11	26	26 ~ 50	1.2
3060 31308165	<b>-165</b>	8	165	138	11	26	26 ~ 50	
3060 31310105	<b>BT40 -SRS10A -105</b>	10	105	78	13	32	32 ~ 50	1.3
3060 31310135	<b>-135</b>	10	135	108	13	32	32 ~ 50	1.4
3060 31310165	<b>-165</b>	10	165	138	13	32	32 ~ 50	1.5
3060 31312105	<b>BT40 -SRS12A -105</b>	12	105	78	15	37	37 ~ 70	1.3
3060 31312135	<b>-135</b>	12	135	108	15	37	37 ~ 70	1.4
3060 31312165	<b>-165</b>	12	165	138	15	37	37 ~ 70	1.5
3060 31316105	<b>BT40 -SRS16A -105</b>	16	105	78	20	40	40 ~ 80	1.5
3060 31316135	<b>-135</b>	16	135	108	20	40	40 ~ 80	1.6
3060 31316165	<b>-165</b>	16	165	138	20	40	40 ~ 80	1.7
3060 31320105	<b>BT40 -SRS20A -105</b>	20	105	78	26	42	42 ~ 100	1.6
3060 31320135	<b>-135</b>	20	135	108	26	42	42 ~ 100	1.7
3060 31320165	<b>-165</b>	20	165	138	26	42	42 ~ 100	1.8
3060 31506105	<b>BT50 -SRS6A -105</b>	6	105	67	9	26	26 ~ 36	3.5
3060 31506135	<b>-135</b>	6	135	97	9	26	26 ~ 36	3.5
3060 31506165	<b>-165</b>	6	165	127	9	26	26 ~ 36	
3060 31508105	<b>BT50 -SRS8A -105</b>	8	105	67	11	26	26 ~ 50	3.6
3060 31508135	<b>-135</b>	8	135	97	11	26	26 ~ 50	3.6
3060 31508165	<b>-165</b>	8	165	127	11	26	26 ~ 50	
3060 31510105	<b>BT50 -SRS10A -105</b>	10	105	67	13	32	32 ~ 50	3.8
3060 31510135	<b>-135</b>	10	135	97	13	32	32 ~ 50	3.8
3060 31510165	<b>-165</b>	10	165	127	13	32	32 ~ 50	4.0
3060 31510195	<b>-195</b>	10	195	157	13	32	32 ~ 50	4.1
3060 31512105	<b>BT50 -SRS12A -105</b>	12	105	67	15	37	37 ~ 70	3.8
3060 31512135	<b>-135</b>	12	135	97	15	37	37 ~ 70	3.9
3060 31512165	<b>-165</b>	12	165	127	15	37	37 ~ 70	4.0
3060 31512195	<b>-195</b>	12	195	157	15	37	37 ~ 70	4.1
3060 31516105	<b>BT50 -SRS16A -105</b>	16	105	67	20	40	40 ~ 80	3.9
3060 31516135	<b>-135</b>	16	135	97	20	40	40 ~ 80	3.9
3060 31516165	<b>-165</b>	16	165	127	20	40	40 ~ 80	4.2
3060 31516195	<b>-195</b>	16	195	157	20	40	40 ~ 80	4.2
3060 31520105	<b>BT50 -SRS20A -105</b>	20	105	67	26	42	42 ~ 100	4.0
3060 31520135	<b>-135</b>	20	135	97	26	42	42 ~ 100	4.0
3060 31520165	<b>-165</b>	20	165	127	26	42	42 ~ 100	4.3
3060 31520195	<b>-195</b>	20	195	157	26	42	42 ~ 100	4.5

1. Always use carbide shank tools with h6 tolerance.

2. Use 2 pcs. of M4 × 5 (S) hex. screw (included) to close air holes on the chuck when internal coolant is used.

**Heating device chart**

heating device	chuck	
	SRS0250A, SRS0312A SRS6A, SRS8A	SRS0375A~SRS0750A SRS10A~SRS20A
ISG3400	Yes	Yes
SRK-HA1, HB2	No	Yes

**Ordering Example**

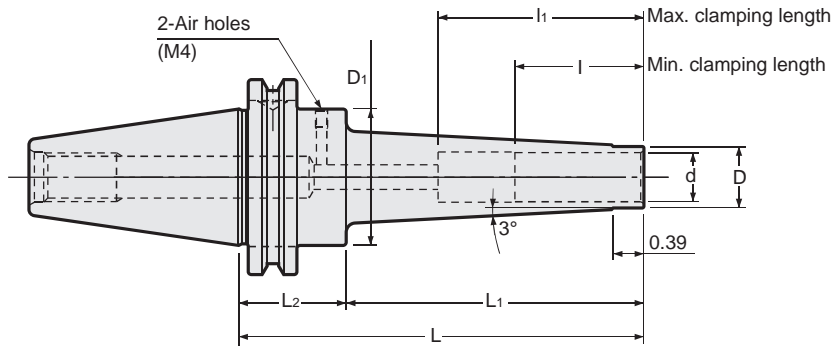
**BT40 - SRS 12 A - 105**  
 Shank size                      I.D. (d)                      Projection length (L)



- BT
- CAT
- AHO
- HSK-A/E/F/C
- HSK-T
- UTS
- Specialized Machine
- Related Equipment
- Bush & Chamfering Drill
- Milling Chuck
- Collet Holder
- "R" Zero Holder
- Hydraulic Chuck
- Shank Fit
- Tapping Chuck
- Arbors
- Function Holder
- Turning Tool
- Retention Stud
- Tool Shank Dimensions

## Shrink Fit ( Slim Type )

- Shrinkage method clamps a cutting tool firmly by heating and cooling the chuck. High precision and strong chucking force. (Slim Type)



## Inch Sizes

Unit : Inch

Code	Model	d	L	L1	L2	D	D1	I1	I	kg
1940 33408105	CAT40 -SRS0250A -105	0.250	4.134	2.756	1.378	0.354	1.750	1.417	1.024	1.1
1940 33408135	-135	0.250	5.315	3.937	1.378	0.354	1.750	1.417	1.024	1.1
1940 33410105	CAT40 -SRS0312A -105	0.312	4.134	2.756	1.378	0.433	1.750	1.969	1.024	1.1
1940 33410135	-135	0.312	5.315	3.937	1.378	0.433	1.750	1.969	1.024	
1940 33412105	CAT40 -SRS0375A -105	0.375	4.134	2.756	1.378	0.512	1.750	1.969	1.260	1.1
1940 33412135	-135	0.375	5.315	3.937	1.378	0.512	1.750	1.969	1.260	1.2
1940 33412165	-165	0.375	6.496	5.118	1.378	0.512	1.750	1.969	1.260	1.3
1940 33416105	CAT40 -SRS0500A -105	0.500	4.134	2.756	1.378	0.591	1.750	2.756	1.457	1.1
1940 33416135	-135	0.500	5.315	3.937	1.378	0.591	1.750	2.756	1.457	1.2
1940 33416165	-165	0.500	6.496	5.118	1.378	0.591	1.750	2.756	1.457	1.3
1940 33420105	CAT40 -SRS0625A -105	0.625	4.134	2.756	1.378	0.787	1.750	3.150	1.575	1.1
1940 33420135	-135	0.625	5.315	3.937	1.378	0.787	1.750	3.150	1.575	1.2
1940 33420165	-165	0.625	6.496	5.118	1.378	0.787	1.750	3.150	1.575	1.4
1940 33424105	CAT40 -SRS0750A -105	0.750	4.134	2.756	1.378	1.024	1.750	3.937	1.654	1.2
1940 33424135	-135	0.750	5.315	3.937	1.378	1.024	1.750	3.937	1.654	1.4
1940 33424165	-165	0.750	6.496	5.118	1.378	1.024	1.750	3.937	1.654	1.6
1940 33508105	CAT50 -SRS0250A -105	0.250	4.134	2.756	1.378	0.354	2.750	1.417	1.024	3
1940 33508135	-135	0.250	5.315	3.937	1.378	0.354	2.750	1.417	1.024	3
1940 33508165	-165	0.250	6.496	5.118	1.378	0.354	2.750	1.417	1.024	
1940 33510105	CAT50 -SRS0312A -105	0.312	4.134	2.756	1.378	0.433	2.750	1.969	1.024	
1940 33510135	-135	0.312	5.315	3.937	1.378	0.433	2.750	1.969	1.024	
1940 33510165	-165	0.312	6.496	5.118	1.378	0.433	2.750	1.969	1.024	
1940 33512105	CAT50 -SRS0375A -105	0.375	4.134	2.756	1.378	0.512	2.750	1.969	1.260	
1940 33512135	-135	0.375	5.315	3.937	1.378	0.512	2.750	1.969	1.260	
1940 33512165	-165	0.375	6.496	5.118	1.378	0.512	2.750	1.969	1.260	3.2
1940 33512195	-195	0.375	7.677	6.299	1.378	0.512	2.750	1.969	1.260	
1940 33516105	CAT50 -SRS0500A -105	0.500	4.134	2.756	1.378	0.591	2.750	2.756	1.457	3.1
1940 33516135	-135	0.500	5.315	3.937	1.378	0.591	2.750	2.756	1.457	3.1
1940 33516165	-165	0.500	6.496	5.118	1.378	0.591	2.750	2.756	1.457	3.3
1940 33516195	-195	0.500	7.677	6.299	1.378	0.591	2.750	2.756	1.457	3.4
1940 33520105	CAT50 -SRS0625A -105	0.625	4.134	2.756	1.378	0.787	2.750	3.150	1.575	
1940 33520135	-135	0.625	5.315	3.937	1.378	0.787	2.750	3.150	1.575	3.2
1940 33520165	-165	0.625	6.496	5.118	1.378	0.787	2.750	3.150	1.575	
1940 33520195	-195	0.625	7.677	6.299	1.378	0.787	2.750	3.150	1.575	
1940 33524105	CAT50 -SRS0750A -105	0.750	4.134	2.756	1.378	1.024	2.750	3.937	1.654	
1940 33524135	-135	0.750	5.315	3.937	1.378	1.024	2.750	3.937	1.654	
1940 33524165	-165	0.750	6.496	5.118	1.378	1.024	2.750	3.937	1.654	3.5
1940 33524195	-195	0.750	7.677	6.299	1.378	1.024	2.750	3.937	1.654	

1. Always use carbide shank tools with h6 tolerance.

2. Use 2pcs. of M4 × 5(S) hex. screw (included) to close air holes on the chuck when internal coolant is used.

## Ordering Example

**CAT40 - SRS 0250 A - 105**

Shank size

I.D. (d)

Projection length (L)

## Metric Sizes

Unit : Inch

Code	Model	d (mm)	L	L1	L2	D	D1	I1	I	kg
1940 31406105	<b>CAT40 -SRS6A -105</b>	6	4.134	2.756	1.378	0.354	1.750	1.417	1.024	1.0
1940 31406135	<b>-135</b>	6	5.315	3.937	1.378	0.354	1.750	1.417	1.024	
1940 31408105	<b>CAT40 -SRS8A -105</b>	8	4.134	2.756	1.378	0.433	1.750	1.969	1.024	1.1
1940 31408135	<b>-135</b>	8	5.315	3.937	1.378	0.433	1.750	1.969	1.024	
1940 31410105	<b>CAT40 -SRS10A -105</b>	10	4.134	2.756	1.378	0.512	1.750	1.969	1.260	1.1
1940 31410135	<b>-135</b>	10	5.315	3.937	1.378	0.512	1.750	1.969	1.260	
1940 31410165	<b>-165</b>	10	6.496	5.118	1.378	0.512	1.750	1.969	1.260	
1940 31412105	<b>CAT40 -SRS12A -105</b>	12	4.134	2.756	1.378	0.591	1.750	2.756	1.457	1.1
1940 31412135	<b>-135</b>	12	5.315	3.937	1.378	0.591	1.750	2.756	1.457	
1940 31412165	<b>-165</b>	12	6.496	5.118	1.378	0.591	1.750	2.756	1.457	1.3
1940 31416105	<b>CAT40 -SRS16A -105</b>	16	4.134	2.756	1.378	0.787	1.750	3.150	1.575	
1940 31416135	<b>-135</b>	16	5.315	3.937	1.378	0.787	1.750	3.150	1.575	
1940 31416165	<b>-165</b>	16	6.496	5.118	1.378	0.787	1.750	3.150	1.575	
1940 31420105	<b>CAT40 -SRS20A -105</b>	20	4.134	2.756	1.378	1.024	1.750	3.937	1.654	
1940 31420135	<b>-135</b>	20	5.315	3.937	1.378	1.024	1.750	3.937	1.654	
1940 31420165	<b>-165</b>	20	6.496	5.118	1.378	1.024	1.750	3.937	1.654	
1940 31506105	<b>CAT50 -SRS6A -105</b>	6	4.134	2.756	1.378	0.354	2.750	1.417	1.024	
1940 31506135	<b>-135</b>	6	5.315	3.937	1.378	0.354	2.750	1.417	1.024	
1940 31506165	<b>-165</b>	6	6.496	5.118	1.378	0.354	2.750	1.417	1.024	
1940 31508105	<b>CAT50 -SRS8A -105</b>	8	4.134	2.756	1.378	0.433	2.750	1.969	1.024	
1940 31508135	<b>-135</b>	8	5.315	3.937	1.378	0.433	2.750	1.969	1.024	
1940 31508165	<b>-165</b>	8	6.496	5.118	1.378	0.433	2.750	1.969	1.024	
1940 31510105	<b>CAT50 -SRS10A -105</b>	10	4.134	2.756	1.378	0.512	2.750	1.969	1.260	3.0
1940 31510135	<b>-135</b>	10	5.315	3.937	1.378	0.512	2.750	1.969	1.260	
1940 31510165	<b>-165</b>	10	6.496	5.118	1.378	0.512	2.750	1.969	1.260	
1940 31510195	<b>-195</b>	10	7.677	6.299	1.378	0.512	2.750	1.969	1.260	3.3
1940 31512105	<b>CAT50 -SRS12A -105</b>	12	4.134	2.756	1.378	0.591	2.750	2.756	1.457	
1940 31512135	<b>-135</b>	12	5.315	3.937	1.378	0.591	2.750	2.756	1.457	3.1
1940 31512165	<b>-165</b>	12	6.496	5.118	1.378	0.591	2.750	2.756	1.457	
1940 31512195	<b>-195</b>	12	7.677	6.299	1.378	0.591	2.750	2.756	1.457	3.4
1940 31516105	<b>CAT50 -SRS16A -105</b>	16	4.134	2.756	1.378	0.787	2.750	3.150	1.575	
1940 31516135	<b>-135</b>	16	5.315	3.937	1.378	0.787	2.750	3.150	1.575	
1940 31516165	<b>-165</b>	16	6.496	5.118	1.378	0.787	2.750	3.150	1.575	3.4
1940 31516195	<b>-195</b>	16	7.677	6.299	1.378	0.787	2.750	3.150	1.575	
1940 31520105	<b>CAT50 -SRS20A -105</b>	20	4.134	2.756	1.378	1.024	2.750	3.937	1.654	
1940 31520135	<b>-135</b>	20	5.315	3.937	1.378	1.024	2.750	3.937	1.654	
1940 31520165	<b>-165</b>	20	6.496	5.118	1.378	1.024	2.750	3.937	1.654	
1940 31520195	<b>-195</b>	20	7.677	6.299	1.378	1.024	2.750	3.937	1.654	

1. Always use carbide shank tools with h6 tolerance.

2. Use 2pcs. of M4 x 5(S) hex. screw (included) to close air holes on the chuck when internal coolant is used.

## Heating device chart

heating device	chuck	
	SRS0250A, SRS0312A SRS6A, SRS8A	SRS0375A~SRS0750A SRS10A~SRS20A
ISG3400	Yes	Yes
SRK-HA1, HB2	No	Yes

## Ordering Example

**CAT40 - SRS 12 A - 105**

Shank size

I.D. (d)

Projection  
length (L)

BT

CAT

AHO

HSK-A/E/F/C

HSK-T

UTS

Specialized  
MachineRelated  
EquipmentBush &  
Chamfering  
Drill

Milling Chuck

Collet Holder

"R" Zero Holder

Hydraulic Chuck

Shank Fit

Tapping Chuck

Arbors

Function Holder

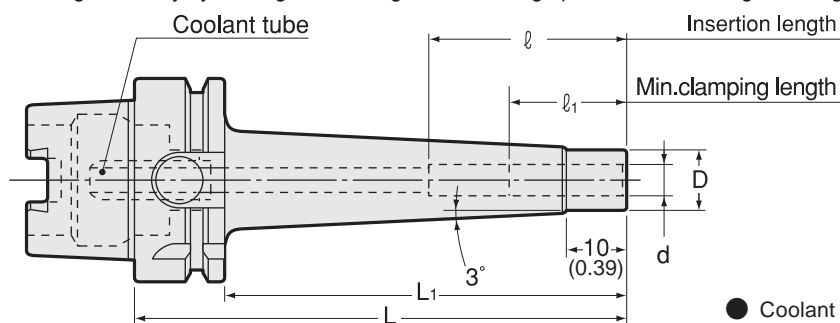
Retention Stud

Tool Shank  
Dimensions

# SRS

## Shrink Fit ( Slim Type )

- Shrinkage method sets a cutting tool firmly by heating and cooling the chuck. High precision and strong chucking. (Slim Type)



● Coolant tube is included.

### Inch Sizes

Unit : Inch

Code	Model	d (mm)	L	L1	D	l1	l
5640 33308090	HSK40A -SRS0250A -90	0.250	3.543	2.756	0.354	1.024	1.417
5640 33308120	-120	0.250	4.724	3.937	0.354	1.024	1.417
5640 33310090	HSK40A -SRS0312A -90	0.312	3.543	2.756	0.433	1.024	1.969
5640 33310120	-120	0.312	4.724	3.937	0.433	1.024	1.969
5640 33312090	HSK40A -SRS0375A -90	0.375	3.543	2.756	0.512	1.260	1.969
5640 33312120	-120	0.375	4.724	3.937	0.512	1.260	1.969
5640 33316090	HSK40A -SRS0500A -90	0.500	3.543	2.756	0.591	1.457	2.756
5640 33316120	-120	0.500	4.724	3.937	0.591	1.457	2.756
5640 33320090	HSK40A -SRS0625A -90	0.625	3.543	2.756	0.787	1.575	2.756
5640 33320120	-120	0.625	4.724	3.937	0.787	1.575	3.150
5640 33508105	HSK63A -SRS0250A -105	0.250	4.134	3.110	0.354	1.024	1.417
5640 33508135	-135	0.250	5.315	4.291	0.354	1.024	1.417
5640 33508165	-165	0.250	6.496	5.472	0.354	1.024	1.417
5640 33510105	HSK63A -SRS0312A -105	0.312	4.134	3.110	0.433	1.024	1.969
5640 33510135	-135	0.312	5.315	4.291	0.433	1.024	1.969
5640 33510165	-165	0.312	6.496	5.472	0.433	1.024	1.969
5640 33512105	HSK63A -SRS0375A -105	0.375	4.134	3.110	0.512	1.260	1.969
5640 33512135	-135	0.375	5.315	4.291	0.512	1.260	1.969
5640 33512165	-165	0.375	6.496	5.472	0.512	1.260	1.969
5640 33516105	HSK63A -SRS0500A -105	0.500	4.134	3.110	0.591	1.457	2.756
5640 33516135	-135	0.500	5.315	4.291	0.591	1.457	2.756
5640 33516165	-165	0.500	6.496	5.472	0.591	1.457	2.756
5640 33520105	HSK63A -SRS0625A -105	0.625	4.134	3.110	0.787	1.575	2.953
5640 33520135	-135	0.625	5.315	4.291	0.787	1.575	3.150
5640 33520165	-165	0.625	6.496	5.472	0.787	1.575	3.150
5640 33524105	HSK63A -SRS0750A -105	0.750	4.134	3.110	1.024	1.654	2.953
5640 33524135	-135	0.750	5.315	4.291	1.024	1.654	3.937
5640 33524165	-165	0.750	6.496	5.472	1.024	1.654	3.937
5640 33708105	HSK100A -SRS0250A -105	0.250	4.134	2.795	0.354	1.024	1.417
5640 33708135	-135	0.250	5.315	3.976	0.354	1.024	1.417
5640 33708165	-165	0.250	6.496	5.157	0.354	1.024	1.417
5640 33710105	HSK100A -SRS0312A -105	0.312	4.134	2.795	0.433	1.024	1.969
5640 33710135	-135	0.312	5.315	3.976	0.433	1.024	1.969
5640 33710165	-165	0.312	6.496	5.157	0.433	1.024	1.969
5640 33712105	HSK100A -SRS0375A -105	0.375	4.134	2.795	0.512	1.260	1.969
5640 33712135	-135	0.375	5.315	3.976	0.512	1.260	1.969
5640 33712165	-165	0.375	6.496	5.157	0.512	1.260	1.969
5640 33712195	-195	0.375	7.677	6.339	0.512	1.260	1.969
5640 33716105	HSK100A -SRS0500A -105	0.500	4.134	2.795	0.591	1.457	2.756
5640 33716135	-135	0.500	5.315	3.976	0.591	1.457	2.756
5640 33716165	-165	0.500	6.496	5.157	0.591	1.457	2.756
5640 33716195	-195	0.500	7.677	6.339	0.591	1.457	2.756
5640 33720105	HSK100A -SRS0625A -105	0.625	4.134	2.795	0.787	1.575	2.756
5640 33720135	-135	0.625	5.315	3.976	0.787	1.575	3.150
5640 33720165	-165	0.625	6.496	5.157	0.787	1.575	3.150
5640 33720195	-195	0.625	7.677	6.339	0.787	1.575	3.150
5640 33724105	HSK100A -SRS0750A -105	0.750	4.134	2.795	1.024	1.654	2.756
5640 33724135	-135	0.750	5.315	3.976	1.024	1.654	3.937
5640 33724165	-165	0.750	6.496	5.157	1.024	1.654	3.937
5640 33724195	-195	0.750	7.677	6.339	1.024	1.654	3.937

Metric Sizes

Unit : Metric

Code	Model	d	L	L1	D	ℓ1	ℓ	kg
5640 31306090	HSK40A -SRS6A -90	6	90	70	9	26	26 ~ 36	0.5
5640 31306120	-120	6	120	100	9	26	26 ~ 36	0.5
5640 31308090	HSK40A -SRS8A -90	8	90	70	11	26	26 ~ 50	0.5
5640 31308120	-120	8	120	100	11	26	26 ~ 50	0.5
5640 31310090	HSK40A -SRS10A -90	10	90	70	13	32	32 ~ 50	0.5
5640 31310120	-120	10	120	100	13	32	32 ~ 50	0.5
5640 31312090	HSK40A -SRS12A -90	12	90	70	15	37	37 ~ 70	0.5
5640 31312120	-120	12	120	100	15	37	37 ~ 70	0.6
5640 31316090	HSK40A -SRS16A -90	16	90	70	20	40	40 ~ 70	0.6
5640 31316120	-120	16	120	100	20	40	40 ~ 80	0.6
5640 31406090	HSK50A -SRS6A -90	6	90	64	9	26	26 ~ 36	0.6
5640 31406120	-120	6	120	94	9	26	26 ~ 36	0.6
5640 31408090	HSK50A -SRS8A -90	8	90	64	11	26	26 ~ 50	0.6
5640 31408120	-120	8	120	94	11	26	26 ~ 50	0.6
5640 31410090	HSK50A -SRS10A -90	10	90	64	13	32	32 ~ 50	0.7
5640 31410120	-120	10	120	94	13	32	32 ~ 50	0.7
5640 31412090	HSK50A -SRS12A -90	12	90	64	15	37	37 ~ 65	0.7
5640 31412120	-120	12	120	94	15	37	37 ~ 70	0.8
5640 31416105	HSK50A -SRS16A -105	16	105	79	20	40	40 ~ 80	0.8
5640 31416135	-135	16	135	109	20	40	40 ~ 80	0.9
5640 31420105	HSK50A -SRS20A -105	20	105	79	26	42	42 ~ 80	0.9
5640 31420135	-135	20	135	109	26	42	42 ~ 100	1.0
5640 31506105	HSK63A -SRS6A -105	6	105	79	9	26	26 ~ 36	0.7
5640 31506135	-135	6	135	109	9	26	26 ~ 36	0.7
5640 31506165	-165	6	165	139	9	26	26 ~ 36	0.7
5640 31508105	HSK63A -SRS8A -105	8	105	79	11	26	26 ~ 50	0.8
5640 31508135	-135	8	135	109	11	26	26 ~ 50	0.8
5640 31508165	-165	8	165	139	11	26	26 ~ 50	0.8
5640 31510105	HSK63A -SRS10A -105	10	105	79	13	32	32 ~ 50	0.9
5640 31510135	-135	10	135	109	13	32	32 ~ 50	1.0
5640 31510165	-165	10	165	139	13	32	32 ~ 50	1.1
5640 31512105	HSK63A -SRS12A -105	12	105	79	15	37	37 ~ 70	1.0
5640 31512135	-135	12	135	109	15	37	37 ~ 70	1.0
5640 31512165	-165	12	165	139	15	37	37 ~ 70	1.1
5640 31516105	HSK63A -SRS16A -105	16	105	79	20	40	40 ~ 75	1.2
5640 31516135	-135	16	135	109	20	40	40 ~ 80	1.3
5640 31516165	-165	16	165	139	20	40	40 ~ 80	1.5
5640 31520105	HSK63A -SRS20A -105	20	105	79	26	42	42 ~ 75	1.1
5640 31520135	-135	20	135	109	26	42	42 ~ 100	1.2
5640 31520165	-165	20	165	139	26	42	42 ~ 100	1.3
5640 31706105	HSK100A -SRS6A -105	6	105	71	9	26	26 ~ 36	2.2
5640 31706135	-135	6	135	101	9	26	26 ~ 36	2.2
5640 31706165	-165	6	165	131	9	26	26 ~ 36	2.2
5640 31708105	HSK100A -SRS8A -105	8	105	71	11	26	26 ~ 50	2.3
5640 31708135	-135	8	135	101	11	26	26 ~ 50	2.3
5640 31708165	-165	8	165	131	11	26	26 ~ 50	2.3
5640 31710105	HSK100A -SRS10A -105	10	105	71	13	32	32 ~ 50	2.4
5640 31710135	-135	10	135	101	13	32	32 ~ 50	2.4
5640 31710165	-165	10	165	131	13	32	32 ~ 50	2.6
5640 31710195	-195	10	195	161	13	32	32 ~ 50	2.6
5640 31712105	HSK100A -SRS12A -105	12	105	71	15	37	37 ~ 70	2.4
5640 31712135	-135	12	135	101	15	37	37 ~ 70	2.5
5640 31712165	-165	12	165	131	15	37	37 ~ 70	2.6
5640 31712195	-195	12	195	161	15	37	37 ~ 70	2.7
5640 31716105	HSK100A -SRS16A -105	16	105	71	20	40	40 ~ 70	2.5
5640 31716135	-135	16	135	101	20	40	40 ~ 80	2.6
5640 31716165	-165	16	165	131	20	40	40 ~ 80	2.8
5640 31716195	-195	16	195	161	20	40	40 ~ 80	2.9
5640 31720105	HSK100A -SRS20A -105	20	105	71	26	42	42 ~ 70	2.6
5640 31720135	-135	20	135	101	26	42	42 ~ 100	2.7
5640 31720165	-165	20	165	131	26	42	42 ~ 100	2.8
5640 31720195	-195	20	195	161	26	42	42 ~ 100	2.9

Always use carbide shank tools with h6 tolerance.

Heating device chart		
heating device	chuck	
	SRS0250A, SRS0312A SRS6A, SRS8A	SRS0375A~SRS0750A SRS10A~SRS20A
ISG3400	Yes	Yes
SRK-HA1, HB2	No	Yes

Ordering Example

**HSK40A - SRS 12 A - 105**  
 Shank size I.D. (d) Projection length (L)

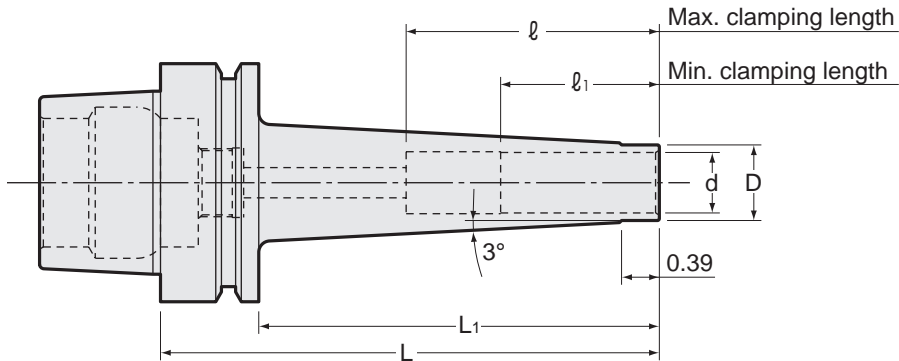


- BT
- CAT
- AHO
- HSK-A/E/F/C
- HSK-T
- UTS
- Specialized Machine
- Related Equipment
- Bush & Chamfering Drill
- Milling Chuck
- Collet Holder
- "R" Zero Holder
- Hydraulic Chuck
- Shank Fit
- Tapping Chuck
- Arbors
- Function Holder
- HSK-E
- HSK-F
- HSK-C
- Tool Shank Dimensions

# SRS

## Shrink Fit ( Slim Type )

- Shrinkage method sets a cutting tool firmly by heating and cooling the chuck. High precision and strong chucking. (Slim Type)



Inch Sizes							Unit : Inch	
Code	Model	d	L	L1	D	l1	l	
5644 33308090	HSK40E -SRS0250A -90	0.250	3.543	2.756	0.354	1.024	1.417	
5644 33308120	-120	0.250	4.724	3.937	0.354	1.024	1.417	
5644 33310090	HSK40E -SRS0312A -90	0.312	3.543	2.756	0.433	1.024	1.969	
5644 33310120	-120	0.312	4.724	3.937	0.433	1.024	1.969	
5644 33312090	HSK40E -SRS0375A -90	0.375	3.543	2.756	0.512	1.260	1.969	
5644 33312120	-120	0.375	4.724	3.937	0.512	1.260	1.969	
5644 33316090	HSK40E -SRS0500A -90	0.500	3.543	2.756	0.591	1.457	2.756	
5644 33316120	-120	0.500	4.724	3.937	0.591	1.457	2.756	
5644 33320090	HSK40E -SRS0625A -90	0.625	3.543	2.756	0.787	1.575	2.756	
5644 33320120	-120	0.625	4.724	3.937	0.787	1.575	3.150	

Always use carbide shank tools with h6 tolerance.

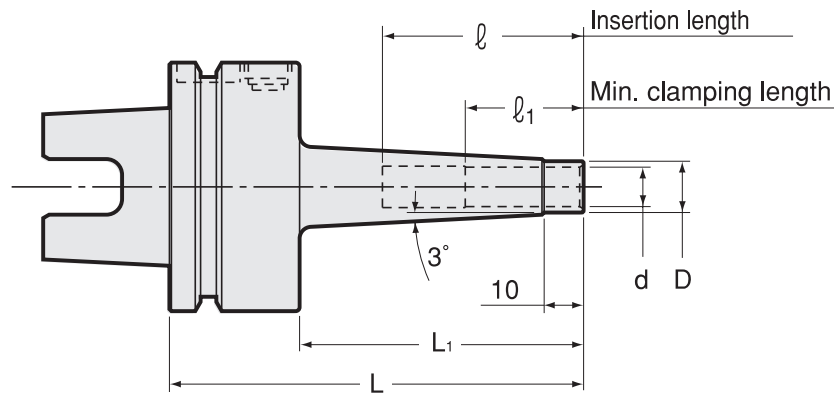
Heating device chart		
heating device	chuck	
	SRS0250A, SRS0312A SRS6A, SRS8A	SRS0375A~SRS0750A SRS10A~SRS20A
ISG3400	Yes	Yes
SRK-HA1, HB2	No	Yes

### Ordering Example

**HSK40E - SRS 0250 A - 120**  
 Shank size                      I.D. (d)                      Projection length (L)

## Shrink Fit ( Slim Type )

- Shrinkage method sets a cutting tool firmly by heating and cooling the chuck. High precision and strong chucking. (Slim Type)



### Metric Sizes

Unit : Metric

Code	Model	d	L	L1	D	l1	l
1300 31106090	UTS5040 -SRS6A -90-H	6	90	60	9	26	26 ~ 36
1300 31106120	-120-H	6	120	90	9	26	26 ~ 36
1300 31108090	UTS5040 -SRS8A -90-H	8	90	60	11	26	26 ~ 50
1300 31108120	-120-H	8	120	90	11	26	26 ~ 50
1300 31110105	UTS5040 -SRS10A -105-H	10	105	75	13	32	32 ~ 50
1300 31110135	-135-H	10	135	105	13	32	32 ~ 50
1300 31112105	UTS5040 -SRS12A -105-H	12	105	75	15	37	37 ~ 65
1300 31112135	-135-H	12	135	105	15	37	37 ~ 70
1300 31116105	UTS5040 -SRS16A -105-H	16	105	75	20	40	40 ~ 80
1300 31116135	-135-H	16	135	105	20	40	40 ~ 80
1300 31120105	UTS5040 -SRS20A -105-H	20	105	75	26	42	42 ~ 80
1300 31120135	-135-H	20	135	105	26	42	42 ~ 100
1300 3 ※ 206105	UTS6350 -SRS6A -105	6	105	72	9	26	26 ~ 36
1300 3 ※ 206135	-135	6	135	102	9	26	26 ~ 36
1300 3 ※ 206165	-165	6	165	132	9	26	26 ~ 36
1300 3 ※ 208105	UTS6350 -SRS8A -105	8	105	72	11	26	26 ~ 50
1300 3 ※ 208135	-135	8	135	102	11	26	26 ~ 50
1300 3 ※ 208165	-165	8	165	132	11	26	26 ~ 50
1300 3 ※ 210105	UTS6350 -SRS10A -105	10	105	72	13	32	32 ~ 50
1300 3 ※ 210135	-135	10	135	102	13	32	32 ~ 50
1300 3 ※ 210165	-165	10	165	132	13	32	32 ~ 50
1300 3 ※ 212105	UTS6350 -SRS12A -105	12	105	72	15	37	32 ~ 70
1300 3 ※ 212135	-135	12	135	102	15	37	32 ~ 70
1300 3 ※ 212165	-165	12	165	132	15	37	32 ~ 70
1300 3 ※ 216105	UTS6350 -SRS16A -105	16	105	72	20	40	40 ~ 75
1300 3 ※ 216135	-135	16	135	102	20	40	40 ~ 80
1300 3 ※ 216165	-165	16	165	132	20	40	40 ~ 80
1300 3 ※ 220105	UTS6350 -SRS20A -105	20	105	72	26	42	42 ~ 75
1300 3 ※ 220135	-135	20	135	102	26	42	42 ~ 100
1300 3 ※ 220165	-165	20	165	132	26	42	42 ~ 100
1300 3 ※ 306105	UTS10080 -SRS6A -105	6	105	71	9	26	26 ~ 36
1300 3 ※ 306135	-135	6	135	101	9	26	26 ~ 36
1300 3 ※ 306165	-165	6	165	131	9	26	26 ~ 36
1300 3 ※ 308105	UTS10080 -SRS8A -105	8	105	71	11	26	26 ~ 50
1300 3 ※ 308135	-135	8	135	101	11	26	26 ~ 50
1300 3 ※ 308165	-165	8	165	131	11	26	26 ~ 50
1300 3 ※ 310105	UTS10080 -SRS10A -105	10	105	71	13	32	32 ~ 50
1300 3 ※ 310135	-135	10	135	101	13	32	32 ~ 50
1300 3 ※ 310165	-165	10	165	131	13	32	32 ~ 50
1300 3 ※ 310195	-195	10	195	161	13	32	32 ~ 50



# Metric Sizes

Unit : Metric

Code	Model	d	L	L1	D	ℓ1	ℓ
1300 3 ※ 312105	<b>UTS10080 -SRS12A -105</b>	12	105	71	15	37	37 ~ 70
1300 3 ※ 312135	<b>-135</b>	12	135	101	15	37	37 ~ 70
1300 3 ※ 312165	<b>-165</b>	12	165	131	15	37	37 ~ 70
1300 3 ※ 312195	<b>-195</b>	12	195	161	15	37	37 ~ 70
1300 3 ※ 316105	<b>UTS10080 -SRS16A -105</b>	16	105	71	20	40	40 ~ 70
1300 3 ※ 316135	<b>-135</b>	16	135	101	20	40	42 ~ 80
1300 3 ※ 316165	<b>-165</b>	16	165	131	20	40	42 ~ 80
1300 3 ※ 316195	<b>-195</b>	16	195	161	20	40	42 ~ 80
1300 3 ※ 320105	<b>UTS10080 -SRS20A -105</b>	20	105	71	26	42	42 ~ 70
1300 3 ※ 320135	<b>-135</b>	20	135	101	26	42	42 ~ 100
1300 3 ※ 320165	<b>-165</b>	20	165	131	26	42	42 ~ 100
1300 3 ※ 320195	<b>-195</b>	20	195	161	26	42	42 ~ 100

When placing an order, please specify high or low pressure. For high pressure type, please add (-H) on end of the description.

1. Always use carbide shank tools with h6 tolerance.
2. UTS5040 is available in high pressure only.

### Heating device chart

heating device	chuck	
	SRS0250A, SRS0312A SRS6A, SRS8A	SRS0375A~SRS0750A SRS10A~SRS20A
ISG3400	Yes	Yes
SRK-HA1, HB2	No	Yes

### Ordering Example

#### Low pressure type

0 ~ 1.0MPa (UTS10080 : 0 ~ 2.0MPa)

**UTS6350 - SRS 10 A - 105**

Shank size                      I.D. (d)                      Projection length (L)

### Ordering Example

#### High pressure type

1.1 ~ 7.0MPa (UTS10080 : 2.1 ~ 7.0MPa)

**UTS6350 - SRS 10 A - 105 - H**

Shank size                      I.D. (d)                      Projection length (L)                      High pressure type