

SRE

小径タイプシュリンカーチャック

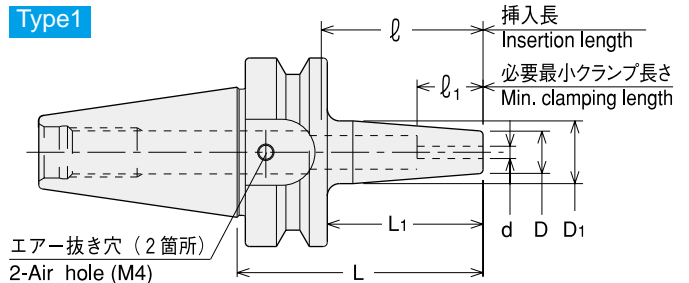
Shrink Fit (Small Diameter Type)

- 加熱・冷却により刃具を装着する方式で、精度、把握力に優れています。(小径タイプ)

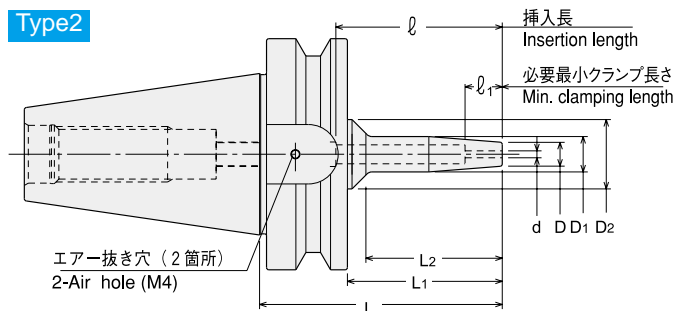
Shrinkage method sets a cutting tool firmly by heating and cooling the chuck. High precision and strong chucking. (Small diameter type)



Type1



Type2



| 商品コード Code | 型式 Model | Type | d | L | L1 | L2 | D | D1 | D2 | ℓ_1 | ℓ | — |
|---------------|-----------------|------|---|-----|-----|-----|------|------|----|----------|--------|--------|
| 3060 51103045 | BT30 -SRE3A -45 | 1 | 3 | 45 | 23 | — | 11.5 | 14.5 | — | 13 | 25 | 44,200 |
| 3060 51103060 | -60 | 1 | 3 | 60 | 38 | — | 11.5 | 14.5 | — | 13 | 40 | 44,500 |
| 3060 51103085 | -85 | 1 | 3 | 85 | 63 | — | 11.5 | 16.5 | — | 13 | 60 | 45,200 |
| 3060 51103105 | -105 | 1 | 3 | 105 | 83 | — | 11.5 | 16.5 | — | 13 | 80 | 45,700 |
| 3060 51103120 | -120 | 2 | 3 | 120 | 98 | 89 | 11.5 | 16.5 | 30 | 13 | 95 | 46,100 |
| 3060 51103145 | -145 | 2 | 3 | 145 | 123 | 115 | 11.5 | 16.5 | 30 | 13 | 120 | 46,600 |
| 3060 51104045 | -SRE4A -45 | 1 | 4 | 45 | 23 | — | 11.5 | 14.5 | — | 16 | 25 | 44,200 |
| 3060 51104060 | -60 | 1 | 4 | 60 | 38 | — | 11.5 | 14.5 | — | 16 | 40 | 44,500 |
| 3060 51104085 | -85 | 1 | 4 | 85 | 63 | — | 11.5 | 16.5 | — | 16 | 60 | 45,200 |
| 3060 51104105 | -105 | 1 | 4 | 105 | 83 | — | 11.5 | 16.5 | — | 16 | 80 | 45,700 |
| 3060 51104120 | -120 | 2 | 4 | 120 | 98 | 89 | 11.5 | 16.5 | 30 | 16 | 95 | 46,100 |
| 3060 51104145 | -145 | 2 | 4 | 145 | 123 | 114 | 11.5 | 16.5 | 30 | 16 | 120 | 46,600 |
| 3060 51105045 | -SRE5A -45 | 1 | 5 | 45 | 23 | — | 13 | 16 | — | 19 | 25 | 39,700 |
| 3060 51105060 | -60 | 1 | 5 | 60 | 38 | — | 13 | 16 | — | 19 | 40 | 40,100 |
| 3060 51105085 | -85 | 1 | 5 | 85 | 63 | — | 13 | 18 | — | 19 | 60 | 40,700 |
| 3060 51105105 | -105 | 1 | 5 | 105 | 83 | — | 13 | 18 | — | 19 | 80 | 41,200 |
| 3060 51105120 | -120 | 2 | 5 | 120 | 98 | 89 | 13 | 18 | 30 | 19 | 95 | 41,700 |
| 3060 51105145 | -145 | 2 | 5 | 145 | 123 | 114 | 13 | 18 | 30 | 19 | 120 | 42,100 |
| 3060 51106045 | -SRE6A -45 | 1 | 6 | 45 | 23 | — | 13 | 16 | — | 19 | 25 | 39,700 |
| 3060 51106060 | -60 | 1 | 6 | 60 | 38 | — | 13 | 16 | — | 27 | 40 | 40,100 |
| 3060 51106085 | -85 | 1 | 6 | 85 | 63 | — | 13 | 18 | — | 27 | 60 | 40,700 |
| 3060 51106105 | -105 | 1 | 6 | 105 | 83 | — | 13 | 18 | — | 27 | 80 | 41,200 |
| 3060 51106120 | -120 | 2 | 6 | 120 | 98 | 89 | 13 | 18 | 30 | 27 | 95 | 41,700 |
| 3060 51106145 | -145 | 2 | 6 | 145 | 123 | 114 | 13 | 18 | 30 | 27 | 120 | 42,100 |
| 3060 51108045 | -SRE8A -45 | 1 | 8 | 45 | 23 | — | 13 | 16 | — | 19 | 25 | 39,700 |
| 3060 51108060 | -60 | 1 | 8 | 60 | 38 | — | 13 | 16 | — | 27 | 40 | 40,100 |
| 3060 51108085 | -85 | 1 | 8 | 85 | 63 | — | 13 | 18 | — | 27 | 60 | 40,700 |
| 3060 51108105 | -105 | 1 | 8 | 105 | 83 | — | 13 | 18 | — | 27 | 80 | 41,200 |
| 3060 51108120 | -120 | 2 | 8 | 120 | 98 | 89 | 13 | 18 | 30 | 27 | 95 | 41,700 |
| 3060 51108145 | -145 | 2 | 8 | 145 | 123 | 114 | 13 | 18 | 30 | 27 | 120 | 42,100 |
| 3060 51303050 | BT40 -SRE3A -50 | 1 | 3 | 50 | 23 | — | 11.5 | 14.5 | — | 13 | 27 | 46,900 |
| 3060 51303070 | -70 | 1 | 3 | 70 | 43 | — | 11.5 | 14.5 | — | 13 | 47 | 47,700 |
| 3060 51303100 | -100 | 1 | 3 | 100 | 73 | — | 11.5 | 16.5 | — | 13 | 77 | 53,500 |
| 3060 51303120 | -120 | 1 | 3 | 120 | 93 | — | 11.5 | 16.5 | — | 13 | 97 | 54,300 |
| 3060 51303135 | -135 | 2 | 3 | 135 | 108 | 89 | 11.5 | 16.5 | 30 | 13 | 112 | 58,300 |
| 3060 51303160 | -160 | 2 | 3 | 160 | 133 | 114 | 11.5 | 16.5 | 30 | 13 | 137 | 59,700 |

| 商品コード Code | 型式 Model | Type | d | L | L1 | L2 | D | D1 | D2 | ℓ1 | ℓ | — |
|---------------|-----------------|------|---|-----|-----|-----|------|------|----|----|-----|--------|
| 3060 51304050 | BT40 -SRE4A -50 | 1 | 4 | 50 | 23 | — | 11.5 | 14.5 | — | 16 | 27 | 46,900 |
| 3060 51304070 | -70 | 1 | 4 | 70 | 43 | — | 11.5 | 14.5 | — | 16 | 47 | 47,700 |
| 3060 51304100 | -100 | 1 | 4 | 100 | 73 | — | 11.5 | 16.5 | — | 16 | 77 | 53,500 |
| 3060 51304120 | -120 | 1 | 4 | 120 | 93 | — | 11.5 | 16.5 | — | 16 | 97 | 54,300 |
| 3060 51304135 | -135 | 2 | 4 | 135 | 108 | 89 | 11.5 | 16.5 | 30 | 16 | 112 | 58,300 |
| 3060 51304160 | -160 | 2 | 4 | 160 | 133 | 114 | 11.5 | 16.5 | 30 | 16 | 137 | 59,700 |
| 3060 51305050 | -SRE5A -50 | 1 | 5 | 50 | 23 | — | 13 | 16 | — | 19 | 27 | 38,000 |
| 3060 51305070 | -70 | 1 | 5 | 70 | 43 | — | 13 | 16 | — | 19 | 47 | 38,800 |
| 3060 51305100 | -100 | 1 | 5 | 100 | 73 | — | 13 | 18 | — | 19 | 77 | 44,500 |
| 3060 51305120 | -120 | 1 | 5 | 120 | 93 | — | 13 | 18 | — | 19 | 97 | 45,400 |
| 3060 51305135 | -135 | 2 | 5 | 135 | 108 | 89 | 13 | 18 | 30 | 19 | 112 | 49,400 |
| 3060 51305160 | -160 | 2 | 5 | 160 | 133 | 114 | 13 | 18 | 30 | 19 | 137 | 50,800 |
| 3060 51306050 | -SRE6A -50 | 1 | 6 | 50 | 23 | — | 13 | 16 | — | 19 | 27 | 38,000 |
| 3060 51306070 | -70 | 1 | 6 | 70 | 43 | — | 13 | 16 | — | 27 | 47 | 38,800 |
| 3060 51306100 | -100 | 1 | 6 | 100 | 73 | — | 13 | 18 | — | 27 | 77 | 44,500 |
| 3060 51306120 | -120 | 1 | 6 | 120 | 93 | — | 13 | 18 | — | 27 | 97 | 45,400 |
| 3060 51306135 | -135 | 2 | 6 | 135 | 108 | 89 | 13 | 18 | 30 | 27 | 112 | 49,400 |
| 3060 51306160 | -160 | 2 | 6 | 160 | 133 | 114 | 13 | 18 | 30 | 27 | 137 | 50,800 |
| 3060 51308050 | -SRE8A -50 | 1 | 8 | 50 | 23 | — | 13 | 16 | — | 19 | 27 | 38,000 |
| 3060 51308070 | -70 | 1 | 8 | 70 | 43 | — | 13 | 16 | — | 27 | 47 | 38,800 |
| 3060 51308100 | -100 | 1 | 8 | 100 | 73 | — | 13 | 18 | — | 27 | 77 | 44,500 |
| 3060 51308120 | -120 | 1 | 8 | 120 | 93 | — | 13 | 18 | — | 27 | 97 | 45,400 |
| 3060 51308135 | -135 | 2 | 8 | 135 | 108 | 89 | 13 | 18 | 30 | 27 | 112 | 49,400 |
| 3060 51308160 | -160 | 2 | 8 | 160 | 133 | 114 | 13 | 18 | 30 | 27 | 137 | 50,800 |
| 3060 52503075 | BT50 -SRE3A -75 | 2 | 3 | 75 | 37 | 28 | 11.5 | 14.5 | 30 | 13 | 45 | 70,600 |
| 3060 52503090 | -90 | 2 | 3 | 90 | 52 | 43 | 11.5 | 14.5 | 30 | 13 | 60 | 70,600 |
| 3060 52503120 | -120 | 2 | 3 | 120 | 82 | 73 | 11.5 | 16.5 | 30 | 13 | 90 | 70,600 |
| 3060 52503135 | -135 | 2 | 3 | 135 | 97 | 89 | 11.5 | 16.5 | 30 | 13 | 105 | 70,600 |
| 3060 52503160 | -160 | 2 | 3 | 160 | 122 | 114 | 11.5 | 16.5 | 30 | 13 | 130 | 70,600 |
| 3060 52504075 | -SRE4A -75 | 2 | 4 | 75 | 37 | 28 | 11.5 | 14.5 | 30 | 16 | 45 | 70,600 |
| 3060 52504090 | -90 | 2 | 4 | 90 | 52 | 43 | 11.5 | 14.5 | 30 | 16 | 60 | 70,600 |
| 3060 52504120 | -120 | 2 | 4 | 120 | 82 | 73 | 11.5 | 16.5 | 30 | 16 | 90 | 70,600 |
| 3060 52504135 | -135 | 2 | 4 | 135 | 97 | 89 | 11.5 | 16.5 | 30 | 16 | 105 | 70,600 |
| 3060 52504160 | -160 | 2 | 4 | 160 | 122 | 114 | 11.5 | 16.5 | 30 | 16 | 130 | 70,600 |
| 3060 52505075 | -SRE5A -75 | 2 | 5 | 75 | 37 | 28 | 13 | 16 | 30 | 19 | 45 | 66,100 |
| 3060 52505090 | -90 | 2 | 5 | 90 | 52 | 43 | 13 | 16 | 30 | 19 | 60 | 66,100 |
| 3060 52505120 | -120 | 2 | 5 | 120 | 82 | 73 | 13 | 18 | 30 | 19 | 90 | 66,100 |
| 3060 52505135 | -135 | 2 | 5 | 135 | 97 | 89 | 13 | 18 | 30 | 19 | 105 | 66,100 |
| 3060 52505160 | -160 | 2 | 5 | 160 | 122 | 114 | 13 | 18 | 30 | 19 | 130 | 66,100 |
| 3060 52506075 | -SRE6A -75 | 2 | 6 | 75 | 37 | 28 | 13 | 16 | 30 | 19 | 45 | 66,100 |
| 3060 52506090 | -90 | 2 | 6 | 90 | 52 | 43 | 13 | 16 | 30 | 19 | 60 | 66,100 |
| 3060 52506120 | -120 | 2 | 6 | 120 | 82 | 73 | 13 | 18 | 30 | 27 | 90 | 66,100 |
| 3060 52506135 | -135 | 2 | 6 | 135 | 97 | 89 | 13 | 18 | 30 | 27 | 105 | 66,100 |
| 3060 52506160 | -160 | 2 | 6 | 160 | 122 | 114 | 13 | 18 | 30 | 27 | 130 | 66,100 |
| 3060 52508075 | -SRE8A -75 | 2 | 8 | 75 | 37 | 28 | 13 | 16 | 30 | 19 | 45 | 66,100 |
| 3060 52508090 | -90 | 2 | 8 | 90 | 52 | 43 | 13 | 16 | 30 | 19 | 60 | 66,100 |
| 3060 52508120 | -120 | 2 | 8 | 120 | 82 | 73 | 13 | 18 | 30 | 27 | 90 | 66,100 |
| 3060 52508135 | -135 | 2 | 8 | 135 | 97 | 89 | 13 | 18 | 30 | 27 | 105 | 66,100 |
| 3060 52508160 | -160 | 2 | 8 | 160 | 122 | 114 | 13 | 18 | 30 | 27 | 130 | 66,100 |

- 1.超硬シャンク (h6 公差) 刃具をご使用下さい。
 - 2.センタースルークーラント供給時は M4X5(S) ボルト 2 本 (付属) でエア穴を塞いで下さい。
 - 3.SRE3A、SRE4A はセンタースルークーラントに対応していません。
- 1.Always use carbide shank tools with h6 tolerance.
 - 2.For center through coolant feed, air holes must be sealed by 2 pcs of M4 x 5 hex. screw.
 - 3.Center through coolant is not possible with SRE3A and SRE4A.

加熱装置対応表 Heating device chart

| 加熱装置 heating device | ホルダ holder |
|------------------------|---------------|
| ISG3400 * | ○ |
| SRK-HA1,HB2 | × |

- * ISG3400 をご使用の場合、専用コイル ISG3200-2-NT が必要となります。
* ISG3200-2-NT coil is necessary in case of heating SRE chucks with ISG3400.

ご注文例 Ordering Example

BT40 - SRE6A - 120
 シャンクサイズ Shank size 内径 (d) I.D. 突き出し長さ (L) Projection length

SRE

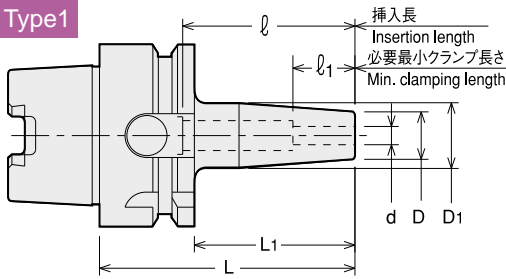
小径タイプシュリンカーチャック

Shrink Fit (Small Diameter Type)

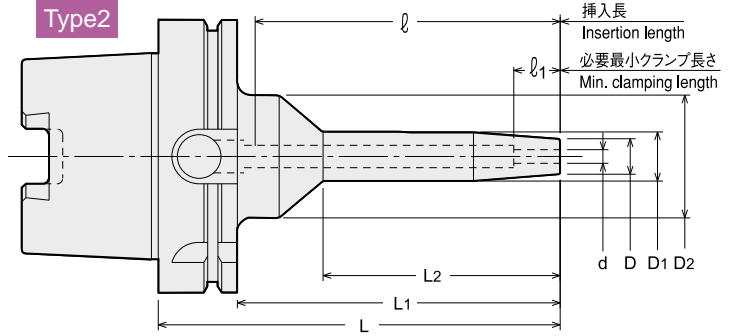
● 加熱・冷却により刃具を装着する方式で、精度、把握力に優れています。(小径タイプ)

Shrinkage method sets a cutting tool firmly by heating and cooling the chuck. High precision and strong chucking. (Small diameter type)

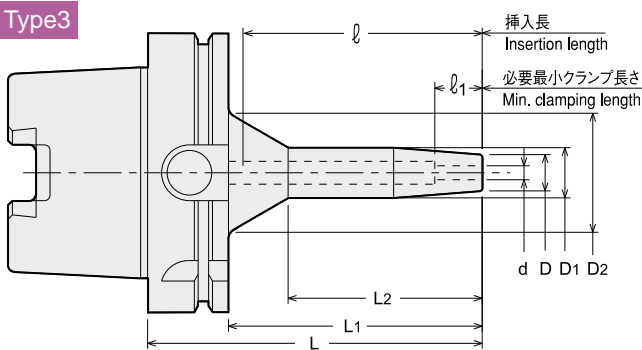
Type1



Type2



Type3



| 商品コード Code | 型式 Model | Type | d | L | L1 | L2 | D | D1 | D2 | l1 | l | — |
|---------------|--------------------------|------|---|-----|-----|----|------|------|----|----|-----|--------|
| 5640 51303045 | HSK40A -SRE3A -45 | 1 | 3 | 45 | 25 | — | 11.5 | 14.5 | 30 | 13 | 23 | 42,000 |
| 5640 51303060 | -60 | 1 | 3 | 60 | 40 | — | 11.5 | 14.5 | 30 | 13 | 38 | 42,300 |
| 5640 51303090 | -90 | 1 | 3 | 90 | 70 | — | 11.5 | 16.5 | 30 | 13 | 68 | 43,500 |
| 5640 51303115 | -115 | 1 | 3 | 115 | 95 | — | 11.5 | 16.5 | 30 | 13 | 93 | 44,700 |
| 5640 51303135 | -135 | 2 | 3 | 135 | 115 | 74 | 11.5 | 16.5 | 30 | 13 | 113 | 45,200 |
| 5640 51303150 | -150 | 2 | 3 | 150 | 130 | 89 | 11.5 | 16.5 | 30 | 13 | 128 | 50,000 |
| 5640 51304045 | -SRE4A -45 | 1 | 4 | 45 | 25 | — | 12 | 14.5 | 30 | 16 | 23 | 42,000 |
| 5640 51304060 | -60 | 1 | 4 | 60 | 40 | — | 12 | 14.5 | 30 | 16 | 38 | 42,300 |
| 5640 51304090 | -90 | 1 | 4 | 90 | 70 | — | 12 | 16.5 | 30 | 16 | 68 | 43,500 |
| 5640 51304115 | -115 | 1 | 4 | 115 | 95 | — | 12 | 16.5 | 30 | 16 | 96 | 44,700 |
| 5640 51304135 | -135 | 2 | 4 | 135 | 115 | 74 | 12 | 16.5 | 30 | 16 | 113 | 45,200 |
| 5640 51304150 | -150 | 2 | 4 | 150 | 130 | 89 | 12 | 16.5 | 30 | 16 | 128 | 50,000 |
| 5640 51305045 | -SRE5A -45 | 1 | 5 | 45 | 25 | — | 13 | 16 | 30 | 19 | 23 | 37,500 |
| 5640 51305060 | -60 | 1 | 5 | 60 | 40 | — | 13 | 16 | 30 | 19 | 38 | 37,800 |
| 5640 51305090 | -90 | 1 | 5 | 90 | 70 | — | 13 | 18 | 30 | 19 | 68 | 39,000 |
| 5640 51305115 | -115 | 1 | 5 | 115 | 95 | — | 13 | 18 | 30 | 19 | 96 | 40,200 |
| 5640 51305135 | -135 | 2 | 5 | 135 | 115 | 74 | 13 | 18 | 30 | 19 | 113 | 40,700 |
| 5640 51305150 | -150 | 2 | 5 | 150 | 130 | 89 | 13 | 18 | 30 | 19 | 128 | 41,100 |
| 5640 51306045 | -SRE6A -45 | 1 | 6 | 45 | 25 | — | 13 | 16 | 30 | 19 | 23 | 37,500 |
| 5640 51306060 | -60 | 1 | 6 | 60 | 40 | — | 13 | 16 | 30 | 27 | 38 | 37,800 |
| 5640 51306090 | -90 | 1 | 6 | 90 | 70 | — | 13 | 18 | 30 | 27 | 68 | 39,000 |
| 5640 51306115 | -115 | 1 | 6 | 115 | 95 | — | 13 | 18 | 30 | 27 | 96 | 40,200 |
| 5640 51306135 | -135 | 2 | 6 | 135 | 115 | 74 | 13 | 18 | 30 | 27 | 113 | 40,700 |
| 5640 51306150 | -150 | 2 | 6 | 150 | 130 | 89 | 13 | 18 | 30 | 27 | 128 | 41,100 |
| 5640 51308045 | -SRE8A -45 | 1 | 8 | 45 | 25 | — | 13 | 16 | 30 | 19 | 23 | 37,500 |
| 5640 51308060 | -60 | 1 | 8 | 60 | 40 | — | 13 | 16 | 30 | 27 | 38 | 37,800 |
| 5640 51308090 | -90 | 1 | 8 | 90 | 70 | — | 13 | 18 | 30 | 27 | 68 | 39,000 |
| 5640 51308115 | -115 | 1 | 8 | 115 | 95 | — | 13 | 18 | 30 | 27 | 93 | 40,200 |
| 5640 51308135 | -135 | 2 | 8 | 135 | 115 | 74 | 13 | 18 | 30 | 27 | 113 | 40,700 |
| 5640 51308150 | -150 | 2 | 8 | 150 | 130 | 89 | 13 | 18 | 30 | 27 | 128 | 41,100 |

| 商品コード Code | 型式 Model | Type | d | L | L1 | L2 | D | D1 | D2 | ℓ1 | ℓ | — |
|---------------|--------------------------|------|---|-----|-----|----|------|------|----|----|-----|--------|
| 5640 51403050 | HSK50A -SRE3A -50 | 1 | 3 | 50 | 24 | — | 11.5 | 14.5 | 30 | 13 | 23 | 48,400 |
| 5640 51403070 | -70 | 1 | 3 | 70 | 44 | — | 11.5 | 14.5 | 30 | 13 | 43 | 49,000 |
| 5640 51403090 | -90 | 1 | 3 | 90 | 64 | — | 11.5 | 16.5 | 30 | 13 | 63 | 49,600 |
| 5640 51403115 | -115 | 1 | 3 | 115 | 89 | — | 11.5 | 16.5 | 30 | 13 | 88 | 50,400 |
| 5640 51403135 | -135 | 2 | 3 | 135 | 109 | 74 | 11.5 | 16.5 | 30 | 13 | 108 | 51,100 |
| 5640 51403150 | -150 | 2 | 3 | 150 | 124 | 89 | 11.5 | 16.5 | 30 | 13 | 123 | 56,100 |
| 5640 51404050 | -SRE4A -50 | 1 | 4 | 50 | 24 | — | 12 | 14.5 | 30 | 16 | 23 | 49,400 |
| 5640 51404070 | -70 | 1 | 4 | 70 | 44 | — | 12 | 14.5 | 30 | 16 | 43 | 50,300 |
| 5640 51404090 | -90 | 1 | 4 | 90 | 64 | — | 12 | 16.5 | 30 | 16 | 63 | 51,100 |
| 5640 51404115 | -115 | 1 | 4 | 115 | 89 | — | 12 | 16.5 | 30 | 16 | 88 | 50,400 |
| 5640 51404135 | -135 | 2 | 4 | 135 | 109 | 74 | 12 | 16.5 | 30 | 16 | 108 | 51,100 |
| 5640 51404150 | -150 | 2 | 4 | 150 | 124 | 89 | 12 | 16.5 | 30 | 16 | 123 | 56,100 |
| 5640 51405050 | -SRE5A -50 | 1 | 5 | 50 | 24 | — | 13 | 16 | 30 | 19 | 23 | 43,900 |
| 5640 51405070 | -70 | 1 | 5 | 70 | 44 | — | 13 | 16 | 30 | 19 | 43 | 44,500 |
| 5640 51405090 | -90 | 1 | 5 | 90 | 64 | — | 13 | 18 | 30 | 19 | 63 | 45,100 |
| 5640 51405115 | -115 | 1 | 5 | 115 | 89 | — | 13 | 18 | 30 | 19 | 88 | 45,900 |
| 5640 51405135 | -135 | 2 | 5 | 135 | 109 | 74 | 13 | 18 | 30 | 19 | 108 | 46,600 |
| 5640 51405150 | -150 | 2 | 5 | 150 | 124 | 89 | 13 | 18 | 30 | 19 | 123 | 47,200 |
| 5640 51406050 | -SRE6A -50 | 1 | 6 | 50 | 24 | — | 13 | 16 | 30 | 19 | 23 | 45,000 |
| 5640 51406070 | -70 | 1 | 6 | 70 | 44 | — | 13 | 16 | 30 | 27 | 43 | 45,800 |
| 5640 51406090 | -90 | 1 | 6 | 90 | 64 | — | 13 | 18 | 30 | 27 | 63 | 46,700 |
| 5640 51406115 | -115 | 1 | 6 | 115 | 89 | — | 13 | 18 | 30 | 27 | 88 | 45,900 |
| 5640 51406135 | -135 | 2 | 6 | 135 | 109 | 74 | 13 | 18 | 30 | 27 | 108 | 46,600 |
| 5640 51406150 | -150 | 2 | 6 | 150 | 124 | 89 | 13 | 18 | 30 | 27 | 123 | 47,200 |
| 5640 51408050 | -SRE8A -50 | 1 | 8 | 50 | 24 | — | 13 | 16 | 30 | 19 | 23 | 39,500 |
| 5640 51408070 | -70 | 1 | 8 | 70 | 44 | — | 13 | 16 | 30 | 27 | 43 | 40,100 |
| 5640 51408090 | -90 | 1 | 8 | 90 | 64 | — | 13 | 18 | 30 | 27 | 63 | 40,700 |
| 5640 51408115 | -115 | 1 | 8 | 115 | 89 | — | 13 | 18 | 30 | 27 | 88 | 45,900 |
| 5640 51408135 | -135 | 2 | 8 | 135 | 109 | 74 | 13 | 18 | 30 | 27 | 108 | 46,600 |
| 5640 51408150 | -150 | 2 | 8 | 150 | 124 | 89 | 13 | 18 | 30 | 27 | 123 | 47,200 |
| 5640 51503050 | HSK63A -SRE3A -50 | 1 | 3 | 50 | 24 | — | 12 | 14.5 | 30 | 13 | 26 | 49,400 |
| 5640 51503070 | -70 | 1 | 3 | 70 | 44 | — | 12 | 14.5 | 30 | 13 | 46 | 50,300 |
| 5640 51503090 | -90 | 1 | 3 | 90 | 64 | — | 12 | 16.5 | 30 | 13 | 66 | 51,100 |
| 5640 51503120 | -120 | 1 | 3 | 120 | 94 | — | 12 | 16.5 | 30 | 13 | 96 | 52,500 |
| 5640 51503135 | -135 | 2 | 3 | 135 | 109 | 59 | 12 | 16.5 | 30 | 13 | 111 | 57,900 |
| 5640 51503165 | -165 | 2 | 3 | 165 | 139 | 89 | 12 | 16.5 | 30 | 13 | 141 | 62,800 |
| 5640 51504050 | -SRE4A -50 | 1 | 4 | 50 | 24 | — | 12 | 14.5 | 30 | 16 | 26 | 49,400 |
| 5640 51504070 | -70 | 1 | 4 | 70 | 44 | — | 12 | 14.5 | 30 | 16 | 46 | 50,300 |
| 5640 51504090 | -90 | 1 | 4 | 90 | 64 | — | 12 | 16.5 | 30 | 16 | 66 | 51,100 |
| 5640 51504120 | -120 | 1 | 4 | 120 | 94 | — | 12 | 16.5 | 30 | 16 | 96 | 52,500 |
| 5640 51504135 | -135 | 2 | 4 | 135 | 109 | 59 | 12 | 16.5 | 30 | 16 | 111 | 57,900 |
| 5640 51504165 | -165 | 2 | 4 | 165 | 139 | 89 | 12 | 16.5 | 30 | 16 | 141 | 62,800 |
| 5640 51505050 | -SRE5A -50 | 1 | 5 | 50 | 24 | — | 13 | 16 | 30 | 19 | 26 | 45,000 |
| 5640 51505070 | -70 | 1 | 5 | 70 | 44 | — | 13 | 16 | 30 | 19 | 46 | 45,800 |
| 5640 51505090 | -90 | 1 | 5 | 90 | 64 | — | 13 | 18 | 30 | 19 | 66 | 46,700 |
| 5640 51505120 | -120 | 1 | 5 | 120 | 94 | — | 13 | 18 | 30 | 19 | 96 | 48,100 |
| 5640 51505135 | -135 | 2 | 5 | 135 | 109 | 59 | 13 | 18 | 30 | 19 | 111 | 49,000 |
| 5640 51505165 | -165 | 2 | 5 | 165 | 139 | 89 | 13 | 18 | 30 | 19 | 141 | 53,900 |
| 5640 51506050 | -SRE6A -50 | 1 | 6 | 50 | 24 | — | 13 | 16 | 30 | 19 | 26 | 45,000 |
| 5640 51506070 | -70 | 1 | 6 | 70 | 44 | — | 13 | 16 | 30 | 27 | 46 | 45,800 |
| 5640 51506090 | -90 | 1 | 6 | 90 | 64 | — | 13 | 18 | 30 | 27 | 66 | 46,700 |
| 5640 51506120 | -120 | 1 | 6 | 120 | 94 | — | 13 | 18 | 30 | 27 | 96 | 48,100 |
| 5640 51506135 | -135 | 2 | 6 | 135 | 109 | 59 | 13 | 18 | 30 | 27 | 111 | 49,000 |
| 5640 51506165 | -165 | 2 | 6 | 165 | 139 | 89 | 13 | 18 | 30 | 27 | 141 | 53,900 |
| 5640 51508050 | -SRE8A -50 | 1 | 8 | 50 | 24 | — | 13 | 16 | 30 | 19 | 26 | 45,000 |
| 5640 51508070 | -70 | 1 | 8 | 70 | 44 | — | 13 | 16 | 30 | 27 | 46 | 45,800 |
| 5640 51508090 | -90 | 1 | 8 | 90 | 64 | — | 13 | 18 | 30 | 27 | 66 | 46,700 |
| 5640 51508120 | -120 | 1 | 8 | 120 | 94 | — | 13 | 18 | 30 | 27 | 96 | 48,100 |
| 5640 51508135 | -135 | 2 | 8 | 135 | 109 | 59 | 13 | 18 | 30 | 27 | 111 | 49,000 |
| 5640 51508165 | -165 | 2 | 8 | 165 | 139 | 89 | 13 | 18 | 30 | 27 | 141 | 53,900 |

1. SRE3A、SRE4A はセンタースルークラントに対応していません。
 1. Center through coolant is not possible with SRE3A and SRE4A.

BT
AHO
HSKA/E/F/C
HSK-T
UTS
専用機
関連機器
サブマウント

ミリングチャック
Milling Chuck

コレットホルダ
Collet Holder

R Zero Holder

ハイドロチャック
Hydraulic Chuck

シンクフィ
Sink Fit

タッピングチャック
Tapping Chuck

アパー類
Apours

マルチツールシステム
Multitool system

機能型ホルダ
Function Holder

HSK-E

HSK-F

HSK-C

シヤック規格
Tool Shank Dimensions

| 商品コード Code | 型式 Model | Type | d | L | L1 | L2 | D | D1 | D2 | ℓ1 | ℓ | — |
|---------------|---------------------------|------|---|-----|-----|----|------|------|----|----|-----|--------|
| 5640 51703090 | HSK100A -SRE3A -90 | 3 | 3 | 90 | 61 | 39 | 11.5 | 16.5 | 41 | 13 | 59 | 76,300 |
| 5640 51703120 | -120 | 3 | 3 | 120 | 91 | 69 | 11.5 | 16.5 | 41 | 13 | 89 | 84,300 |
| 5640 51703150 | -150 | 2 | 3 | 150 | 121 | 59 | 11.5 | 16.5 | 45 | 13 | 119 | 91,700 |
| 5640 51703180 | -180 | 2 | 3 | 180 | 151 | 89 | 11.5 | 16.5 | 45 | 13 | 149 | 95,800 |
| 5640 51704090 | -SRE4A -90 | 3 | 4 | 90 | 61 | 39 | 12 | 16.5 | 41 | 16 | 59 | 76,300 |
| 5640 51704120 | -120 | 3 | 4 | 120 | 91 | 69 | 12 | 16.5 | 41 | 16 | 89 | 84,300 |
| 5640 51704150 | -150 | 2 | 4 | 150 | 121 | 59 | 12 | 16.5 | 45 | 16 | 119 | 91,700 |
| 5640 51704180 | -180 | 2 | 4 | 180 | 151 | 89 | 12 | 16.5 | 45 | 16 | 149 | 95,800 |
| 5640 51705090 | -SRE5A -90 | 3 | 5 | 90 | 61 | 39 | 13 | 18 | 42 | 19 | 59 | 71,900 |
| 5640 51705120 | -120 | 3 | 5 | 120 | 91 | 69 | 13 | 18 | 42 | 19 | 89 | 75,400 |
| 5640 51705150 | -150 | 2 | 5 | 150 | 121 | 59 | 13 | 18 | 45 | 19 | 119 | 82,700 |
| 5640 51705180 | -180 | 2 | 5 | 180 | 151 | 89 | 13 | 18 | 45 | 19 | 149 | 86,900 |
| 5640 51706090 | -SRE6A -90 | 3 | 6 | 90 | 61 | 39 | 13 | 18 | 42 | 19 | 59 | 71,900 |
| 5640 51706120 | -120 | 3 | 6 | 120 | 91 | 69 | 13 | 18 | 42 | 27 | 89 | 75,400 |
| 5640 51706150 | -150 | 2 | 6 | 150 | 121 | 59 | 13 | 18 | 45 | 27 | 119 | 82,700 |
| 5640 51706180 | -180 | 2 | 6 | 180 | 151 | 89 | 13 | 18 | 45 | 27 | 149 | 86,900 |
| 5640 51708090 | -SRE8A -90 | 3 | 8 | 90 | 61 | 39 | 13 | 18 | 42 | 19 | 59 | 71,900 |
| 5640 51708120 | -120 | 3 | 8 | 120 | 91 | 69 | 13 | 18 | 42 | 27 | 89 | 75,400 |
| 5640 51708150 | -150 | 2 | 8 | 150 | 121 | 59 | 13 | 18 | 45 | 27 | 119 | 82,700 |
| 5640 51708180 | -180 | 2 | 8 | 180 | 151 | 89 | 13 | 18 | 45 | 27 | 149 | 86,900 |

1. SRE3A、SRE4A はセンタースルークラントに対応していません。
 1. Center through coolant is not possible with SRE3A and SRE4A.

超硬シャンク (h6 公差) 刃具をご使用下さい。
 Always use carbide shank tools with h6 tolerance.

| 加熱装置対応表 Heating device chart | |
|---------------------------------|---------------|
| 加熱装置 heating device | ホルダ holder |
| ISG3400 * | ○ |
| SRK-HA1,HB2 | × |

- * ISG3400 をご使用の場合、専用コイル ISG3200-2-NT が必要となります。
 * ISG3200-2-NT coil is necessary in case of heating SRE chucks with ISG3400.

ご注文例 Ordering Example

HSK40A - SRE6A - 90

シャンクサイズ 内径 (d) 突き出し長さ (L)
 Shank size I.D. Projection length

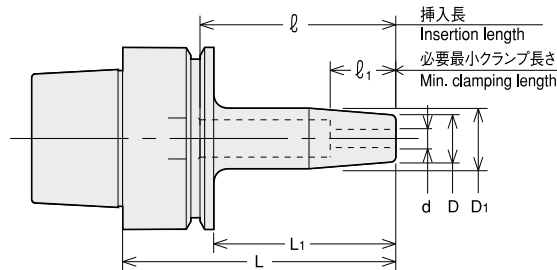
SRE

小径タイプシュリンカーチャック

Shrink Fit (Small Diameter Type)

● 加熱・冷却により刃具を装着する方式で、精度、把握力に優れています。(小径タイプ)

Shrinkage method sets a cutting tool firmly by heating and cooling the chuck. High precision and strong chucking. (Small diameter type)



| 商品コード Code | 型式 Model | d | L | L1 | D | D1 | l1 | l | — |
|---------------|-------------------|---|----|----|------|------|----|----|--------|
| 5640 91103035 | HSK25E -SRE3A -35 | 3 | 35 | 25 | 11.5 | 14.5 | 13 | 20 | 40,800 |
| 5640 91103050 | -50 | 3 | 50 | 40 | 11.5 | 14.5 | 13 | 35 | 40,900 |
| 5640 91104035 | -SRE4A -35 | 4 | 35 | 25 | 11.5 | 14.5 | 16 | 20 | 40,800 |
| 5640 91104050 | -50 | 4 | 50 | 40 | 11.5 | 14.5 | 16 | 35 | 40,900 |
| 5640 91105035 | -SRE5A -35 | 5 | 35 | 25 | 13 | 16 | 19 | 20 | 36,400 |
| 5640 91105050 | -50 | 5 | 50 | 40 | 13 | 16 | 19 | 35 | 36,500 |
| 5640 91106035 | -SRE6A -35 | 6 | 35 | 25 | 13 | 16 | 19 | 20 | 36,400 |
| 5640 91106050 | -50 | 6 | 50 | 40 | 13 | 16 | 24 | 35 | 36,500 |
| 5640 91108035 | -SRE8A -35 | 8 | 35 | 25 | 13 | 16 | 19 | 20 | 36,400 |
| 5640 91108050 | -50 | 8 | 50 | 40 | 13 | 16 | 24 | 35 | 36,500 |
| 5640 91203045 | HSK32E -SRE3A -45 | 3 | 45 | 25 | 11.5 | 14.5 | 13 | 28 | 41,300 |
| 5640 91203060 | -60 | 3 | 60 | 40 | 11.5 | 14.5 | 13 | 43 | 41,500 |
| 5640 91204045 | -SRE4A -45 | 4 | 45 | 25 | 11.5 | 14.5 | 16 | 28 | 41,300 |
| 5640 91204060 | -60 | 4 | 60 | 40 | 11.5 | 14.5 | 16 | 43 | 41,500 |
| 5640 91205045 | -SRE5A -45 | 5 | 45 | 25 | 13 | 16 | 19 | 28 | 36,900 |
| 5640 91205060 | -60 | 5 | 60 | 40 | 13 | 16 | 19 | 43 | 37,100 |
| 5640 91206045 | -SRE6A -45 | 6 | 45 | 25 | 13 | 16 | 19 | 28 | 36,900 |
| 5640 91206060 | -60 | 6 | 60 | 40 | 13 | 16 | 27 | 43 | 37,100 |
| 5640 91208045 | -SRE8A -45 | 8 | 45 | 25 | 13 | 16 | 19 | 28 | 36,900 |
| 5640 91208060 | -60 | 8 | 60 | 40 | 13 | 16 | 27 | 43 | 37,100 |
| 5640 91303045 | HSK40E -SRE3A -45 | 3 | 45 | 25 | 11.5 | 14.5 | 13 | 28 | 41,300 |
| 5640 91303060 | -60 | 3 | 60 | 40 | 11.5 | 14.5 | 13 | 43 | 41,500 |
| 5640 91304045 | -SRE4A -45 | 4 | 45 | 25 | 11.5 | 14.5 | 16 | 28 | 41,300 |
| 5640 91304060 | -60 | 4 | 60 | 40 | 11.5 | 14.5 | 16 | 43 | 41,500 |
| 5640 91305045 | -SRE5A -45 | 5 | 45 | 25 | 13 | 16 | 19 | 28 | 36,900 |
| 5640 91305060 | -60 | 5 | 60 | 40 | 13 | 16 | 19 | 43 | 37,100 |
| 5640 91306045 | -SRE6A -45 | 6 | 45 | 25 | 13 | 16 | 19 | 28 | 36,900 |
| 5640 91306060 | -60 | 6 | 60 | 40 | 13 | 16 | 27 | 43 | 37,100 |
| 5640 91306080 | -80 | 6 | 80 | 60 | 13 | 18 | 27 | 63 | 37,300 |
| 5640 91308045 | -SRE8A -45 | 8 | 45 | 25 | 13 | 16 | 19 | 28 | 37,100 |
| 5640 91308060 | -60 | 8 | 60 | 40 | 13 | 16 | 27 | 43 | 36,900 |
| 5640 91308080 | -80 | 8 | 80 | 60 | 13 | 18 | 27 | 63 | 37,300 |
| 5640 91403050 | HSK50E -SRE3A -50 | 3 | 50 | 24 | 11.5 | 14.5 | 13 | 31 | 41,300 |
| 5640 91403070 | -70 | 3 | 70 | 44 | 11.5 | 14.5 | 13 | 51 | 41,500 |
| 5640 91404050 | -SRE4A -50 | 4 | 50 | 24 | 11.5 | 14.5 | 16 | 31 | 41,300 |
| 5640 91404070 | -70 | 4 | 70 | 44 | 11.5 | 14.5 | 16 | 51 | 41,500 |
| 5640 91405050 | -SRE5A -50 | 5 | 50 | 24 | 13 | 16 | 19 | 31 | 36,900 |
| 5640 91405070 | -70 | 5 | 70 | 44 | 13 | 16 | 19 | 51 | 37,100 |
| 5640 91406050 | -SRE6A -50 | 6 | 50 | 24 | 13 | 16 | 19 | 31 | 36,900 |
| 5640 91406070 | -70 | 6 | 70 | 44 | 13 | 16 | 27 | 51 | 37,100 |
| 5640 91406090 | -90 | 6 | 90 | 64 | 13 | 18 | 27 | 71 | 37,300 |
| 5640 91408050 | -SRE8A -50 | 8 | 50 | 24 | 13 | 16 | 19 | 31 | 37,100 |
| 5640 91408070 | -70 | 8 | 70 | 44 | 13 | 16 | 27 | 51 | 36,900 |
| 5640 91408090 | -90 | 8 | 90 | 64 | 13 | 18 | 27 | 71 | 37,300 |

加熱装置対応表
Heating device chart

| 加熱装置 heating device | ホルダ holder |
|------------------------|---------------|
| ISG3400 * | ○ |
| SRK-HA1,HB2 | × |

* ISG3400 をご使用の場合、専用コイル ISG3200-2-NT が必要となります。
* ISG3200-2-NT coil is necessary in case of heating SRE chucks with ISG3400.

- SRE3A、SRE4A はセンタースルークラントに対応していません。
 - 超硬シャンク (h6 公差) 刃具をご使用下さい。
1. Center through coolant is not possible with SRE3A and SRE4A.
2. Always use carbide shank tools with h6 tolerance.

ご注文例 Ordering Example

HSK40E - SRE6A - 80

シャンクサイズ Shank size 内径 (d) I.D. 突き出し長さ (L) Projection length

SRE

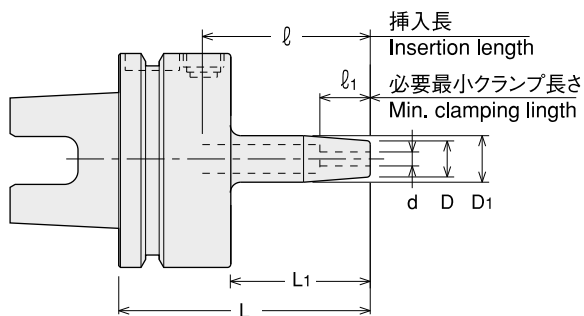
小径タイプシュリンカーチャック

Shrink Fit (Small Diameter Type)

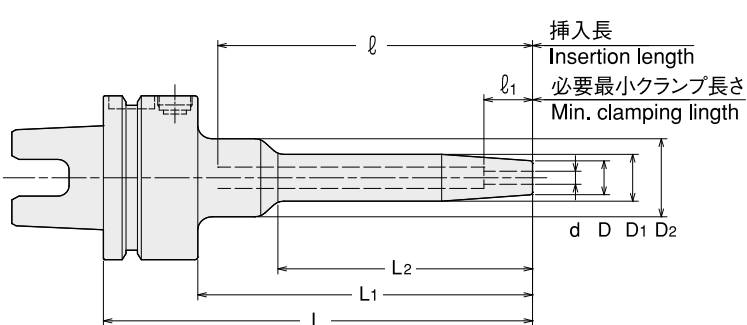
● 加熱・冷却により刃具を装着する方式で、精度、把握力に優れています。(小径タイプ)

Shrinkage method sets a cutting tool firmly by heating and cooling the chuck. High precision and strong chucking. (Small diameter type)

Type1



Type2



| 商品コード Code | 型式 Model | Type | d | L | L1 | L2 | D | D1 | D2 | ℓ1 | ℓ | - |
|-----------------|-----------------------------|------|---|-----|-----|----|------|------|----|----|-----|--------|
| 1300 51103060 | UTS5040 -SRE3A -60-H | 1 | 3 | 60 | 30 | - | 11.5 | 14.5 | - | 13 | 47 | 50,200 |
| 1300 51103090 | -90-H | 1 | 3 | 90 | 60 | - | 11.5 | 16.5 | - | 13 | 77 | 51,500 |
| 1300 51103120 | -120-H | 1 | 3 | 120 | 90 | - | 11.5 | 16.5 | - | 13 | 107 | 52,600 |
| 1300 51104060 | -SRE4A -60-H | 1 | 4 | 60 | 30 | - | 11.5 | 14.5 | - | 16 | 47 | 50,200 |
| 1300 51104090 | -90-H | 1 | 4 | 90 | 60 | - | 11.5 | 16.5 | - | 16 | 77 | 51,500 |
| 1300 51104120 | -120-H | 1 | 4 | 120 | 90 | - | 11.5 | 16.5 | - | 16 | 107 | 52,600 |
| 1300 51105060 | -SRE5A -60-H | 1 | 5 | 60 | 30 | - | 13 | 16 | - | 19 | 47 | 45,700 |
| 1300 51105090 | -90-H | 1 | 5 | 90 | 60 | - | 13 | 18 | - | 19 | 77 | 47,000 |
| 1300 51105120 | -120-H | 1 | 5 | 120 | 90 | - | 13 | 18 | - | 19 | 107 | 48,100 |
| 1300 51106060 | -SRE6A -60-H | 1 | 6 | 60 | 30 | - | 13 | 16 | - | 27 | 47 | 45,700 |
| 1300 51106090 | -90-H | 1 | 6 | 90 | 60 | - | 13 | 18 | - | 27 | 77 | 47,000 |
| 1300 51106120 | -120-H | 1 | 6 | 120 | 90 | - | 13 | 18 | - | 27 | 107 | 48,100 |
| 1300 51108060 | -SRE8A -60-H | 1 | 8 | 60 | 30 | - | 13 | 16 | - | 27 | 47 | 45,700 |
| 1300 51108090 | -90-H | 1 | 8 | 90 | 60 | - | 13 | 18 | - | 27 | 77 | 47,000 |
| 1300 51108120 | -120-H | 1 | 8 | 120 | 90 | - | 13 | 18 | - | 27 | 107 | 48,100 |
| 1300 5 ※ 203060 | UTS6350 -SRE3A -60 | 1 | 3 | 60 | 27 | - | 11.5 | 14.5 | - | 13 | 47 | 50,200 |
| 1300 5 ※ 203090 | -90 | 1 | 3 | 90 | 57 | - | 11.5 | 16.5 | - | 13 | 77 | 51,500 |
| 1300 5 ※ 203120 | -120 | 1 | 3 | 120 | 87 | - | 11.5 | 16.5 | - | 13 | 107 | 52,600 |
| 1300 5 ※ 203150 | -150 | 2 | 3 | 150 | 117 | 89 | 11.5 | 16.5 | 30 | 13 | 137 | 58,800 |
| 1300 5 ※ 204060 | -SRE4A -60 | 1 | 4 | 60 | 27 | - | 11.5 | 14.5 | - | 16 | 47 | 50,200 |
| 1300 5 ※ 204090 | -90 | 1 | 4 | 90 | 57 | - | 11.5 | 16.5 | - | 16 | 77 | 51,500 |
| 1300 5 ※ 204120 | -120 | 1 | 4 | 120 | 87 | - | 11.5 | 16.5 | - | 16 | 107 | 52,600 |
| 1300 5 ※ 204150 | -150 | 2 | 4 | 150 | 117 | 89 | 11.5 | 16.5 | 30 | 16 | 137 | 58,800 |
| 1300 5 ※ 205060 | -SRE5A -60 | 1 | 5 | 60 | 27 | - | 13 | 16 | - | 19 | 47 | 45,700 |
| 1300 5 ※ 205090 | -90 | 1 | 5 | 90 | 57 | - | 13 | 18 | - | 19 | 77 | 47,000 |
| 1300 5 ※ 205120 | -120 | 1 | 5 | 120 | 87 | - | 13 | 18 | - | 19 | 107 | 48,100 |
| 1300 5 ※ 205150 | -150 | 2 | 5 | 150 | 117 | 89 | 13 | 18 | 30 | 19 | 137 | 49,800 |
| 1300 5 ※ 206060 | -SRE6A -60 | 1 | 6 | 60 | 27 | - | 13 | 16 | - | 19 | 47 | 45,700 |
| 1300 5 ※ 206090 | -90 | 1 | 6 | 90 | 57 | - | 13 | 18 | - | 27 | 77 | 47,000 |
| 1300 5 ※ 206120 | -120 | 1 | 6 | 120 | 87 | - | 13 | 18 | - | 27 | 107 | 48,100 |
| 1300 5 ※ 206150 | -150 | 2 | 6 | 150 | 117 | 89 | 13 | 18 | 30 | 27 | 137 | 49,800 |
| 1300 5 ※ 208060 | -SRE8A -60 | 1 | 8 | 60 | 27 | - | 13 | 16 | - | 19 | 47 | 45,700 |
| 1300 5 ※ 208090 | -90 | 1 | 8 | 90 | 57 | - | 13 | 18 | - | 27 | 77 | 47,000 |
| 1300 5 ※ 208120 | -120 | 1 | 8 | 120 | 87 | - | 13 | 18 | - | 27 | 107 | 48,100 |
| 1300 5 ※ 208150 | -150 | 2 | 8 | 150 | 117 | 89 | 13 | 18 | 30 | 27 | 137 | 49,800 |

| 商品コード Code | 型式 Model | Type | d | L | L1 | L2 | D | D1 | D2 | ℓ1 | ℓ | - |
|-----------------|----------------------------|------|---|-----|-----|----|------|------|----|----|-----|--------|
| 1300 5 ※ 303090 | UTS10080 -SRE3A -90 | 1 | 3 | 90 | 56 | - | 11.5 | 16.5 | - | 13 | 77 | 76,300 |
| 1300 5 ※ 303120 | -120 | 1 | 3 | 120 | 86 | - | 11.5 | 16.5 | - | 13 | 107 | 84,300 |
| 1300 5 ※ 303135 | -135 | 2 | 3 | 135 | 101 | 59 | 11.5 | 16.5 | 30 | 13 | 122 | 89,600 |
| 1300 5 ※ 303165 | -165 | 2 | 3 | 165 | 131 | 89 | 11.5 | 16.5 | 30 | 13 | 152 | 91,700 |
| 1300 5 ※ 304090 | -SRE4A -90 | 1 | 4 | 90 | 56 | - | 11.5 | 16.5 | - | 16 | 77 | 76,300 |
| 1300 5 ※ 304120 | -120 | 1 | 4 | 120 | 86 | - | 11.5 | 16.5 | - | 16 | 107 | 84,300 |
| 1300 5 ※ 304135 | -135 | 2 | 4 | 135 | 101 | 59 | 11.5 | 16.5 | 30 | 16 | 122 | 89,600 |
| 1300 5 ※ 304165 | -165 | 2 | 4 | 165 | 131 | 89 | 11.5 | 16.5 | 30 | 16 | 152 | 91,700 |
| 1300 5 ※ 305090 | -SRE5A -90 | 1 | 5 | 90 | 56 | - | 13 | 18 | - | 19 | 77 | 71,900 |
| 1300 5 ※ 305120 | -120 | 1 | 5 | 120 | 86 | - | 13 | 18 | - | 19 | 107 | 75,400 |
| 1300 5 ※ 305135 | -135 | 2 | 5 | 135 | 101 | 59 | 13 | 18 | 30 | 19 | 122 | 80,700 |
| 1300 5 ※ 305165 | -165 | 2 | 5 | 165 | 131 | 89 | 13 | 18 | 30 | 19 | 152 | 82,700 |
| 1300 5 ※ 306090 | -SRE6A -90 | 1 | 6 | 90 | 56 | - | 13 | 18 | - | 27 | 77 | 71,900 |
| 1300 5 ※ 306120 | -120 | 1 | 6 | 120 | 86 | - | 13 | 18 | - | 27 | 107 | 75,400 |
| 1300 5 ※ 306135 | -135 | 2 | 6 | 135 | 101 | 59 | 13 | 18 | 30 | 27 | 122 | 80,700 |
| 1300 5 ※ 306165 | -165 | 2 | 6 | 165 | 131 | 89 | 13 | 18 | 30 | 27 | 152 | 82,700 |
| 1300 5 ※ 308090 | -SRE8A -90 | 1 | 8 | 90 | 56 | - | 13 | 18 | - | 27 | 77 | 71,900 |
| 1300 5 ※ 308120 | -120 | 1 | 8 | 120 | 86 | - | 13 | 18 | - | 27 | 107 | 75,400 |
| 1300 5 ※ 308135 | -135 | 2 | 8 | 135 | 101 | 59 | 13 | 18 | 30 | 27 | 122 | 80,700 |
| 1300 5 ※ 308165 | -165 | 2 | 8 | 165 | 131 | 89 | 13 | 18 | 30 | 27 | 152 | 82,700 |

商品コードの※は低圧用では0、高圧用では1となります。

- 1.超硬シャンク (h6 公差) 刃具をご使用下さい。
- 2.UTS5040 は高圧用のみになります。
- 3.SRE3A、SRE4A はセンタースルークランプに対応していません。
 - 1.Always use carbide shank tools with h6 tolerance.
 - 2.Only high pressure type is available for UTS5040.
 - 3.Center through coolant is not possible with SRE3A and SRE4A.

加熱装置対応表
Heating device chart

| 加熱装置 heating device | ホルダ holder |
|------------------------|---------------|
| ISG3400 * | ○ |
| SRK-HA1,HB2 | × |

* ISG3400 をご使用の場合、専用コイル ISG3200-2-NT が必要となります。
* ISG3200-2-NT coil is necessary in case of heating SRE chucks with ISG3400.

ご注文例 Ordering Example

低圧用 Low pressure type
0 ~ 1.0MPa (UTS10080 のみ 0 ~ 2.0MPa)

UTS6350 - SRE6A - 90
 シャンクサイズ 内径 (d) 突き出し長さ (L)
 Shank size I.D. Projection length

ご注文例 Ordering Example

高圧用 High pressure type
1.1 ~ 7.0MPa (UTS10080 のみ 2.1 ~ 7.0MPa)

UTS6350 - SRE6A - 90 - H
 シャンクサイズ 内径 (d) 突き出し長さ (L) 高圧の場合
 Shank size I.D. Projection length High pressure type