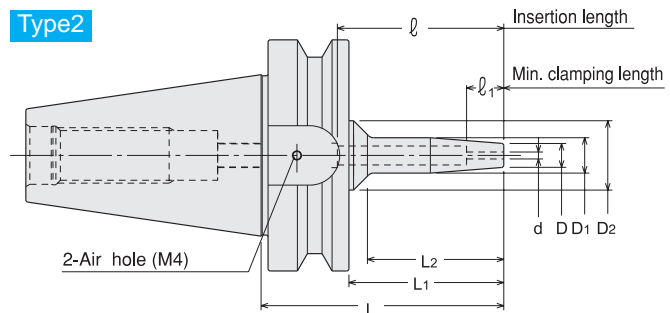
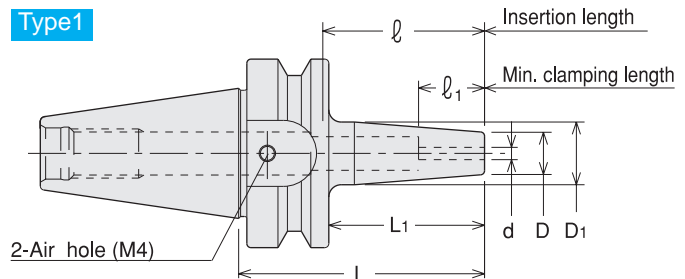


Shrink Fit (Small Diameter Type)

- Shrinkage method clamps a cutting tool firmly by heating and cooling the chuck. High precision and strong Clamping force. (Small diameter type)



Metric Sizes

Unit : Metric

Code	Model	Type	d	L	L1	L2	D	D1	D2	l1	l
3060 51103045	BT30 -SRE3A -45	1	3	45	23	—	11.5	14.5	—	13	25
3060 51103060	-60	1	3	60	38	—	11.5	14.5	—	13	40
3060 51103085	-85	1	3	85	63	—	11.5	16.5	—	13	60
3060 51103105	-105	1	3	105	83	—	11.5	16.5	—	13	80
3060 51103120	-120	2	3	120	98	89	11.5	16.5	30	13	95
3060 51103145	-145	2	3	145	123	115	11.5	16.5	30	13	120
3060 51104045	BT30 -SRE4A -45	1	4	45	23	—	11.5	14.5	—	16	25
3060 51104060	-60	1	4	60	38	—	11.5	14.5	—	16	40
3060 51104085	-85	1	4	85	63	—	11.5	16.5	—	16	60
3060 51104105	-105	1	4	105	83	—	11.5	16.5	—	16	80
3060 51104120	-120	2	4	120	98	89	11.5	16.5	30	16	95
3060 51104145	-145	2	4	145	123	114	11.5	16.5	30	16	120
3060 51105045	BT30 -SRE5A -45	1	5	45	23	—	13	16	—	19	25
3060 51105060	-60	1	5	60	38	—	13	16	—	19	40
3060 51105085	-85	1	5	85	63	—	13	18	—	19	60
3060 51105105	-105	1	5	105	83	—	13	18	—	19	80
3060 51105120	-120	2	5	120	98	89	13	18	30	19	95
3060 51105145	-145	2	5	145	123	114	13	18	30	19	120
3060 51106045	BT30 -SRE6A -45	1	6	45	23	—	13	16	—	19	25
3060 51106060	-60	1	6	60	38	—	13	16	—	27	40
3060 51106085	-85	1	6	85	63	—	13	18	—	27	60
3060 51106105	-105	1	6	105	83	—	13	18	—	27	80
3060 51106120	-120	2	6	120	98	89	13	18	30	27	95
3060 51106145	-145	2	6	145	123	114	13	18	30	27	120
3060 51108045	BT30 -SRE8A -45	1	8	45	23	—	13	16	—	19	25
3060 51108060	-60	1	8	60	38	—	13	16	—	27	40
3060 51108085	-85	1	8	85	63	—	13	18	—	27	60
3060 51108105	-105	1	8	105	83	—	13	18	—	27	80
3060 51108120	-120	2	8	120	98	89	13	18	30	27	95
3060 51108145	-145	2	8	145	123	114	13	18	30	27	120
3060 51303050	BT40 -SRE3A -50	1	3	50	23	—	11.5	14.5	—	13	27
3060 51303070	-70	1	3	70	43	—	11.5	14.5	—	13	47
3060 51303100	-100	1	3	100	73	—	11.5	16.5	—	13	77
3060 51303120	-120	1	3	120	93	—	11.5	16.5	—	13	97
3060 51303135	-135	2	3	135	108	89	11.5	16.5	30	13	112
3060 51303160	-160	2	3	160	133	114	11.5	16.5	30	13	137

Metric Sizes												Unit : Metric	
Code	Model			Type	d	L	L1	L2	D	D1	D2	ℓ1	ℓ
3060 51304050	BT40	-SRE4A	-50	1	4	50	23	—	11.5	14.5	—	16	27
3060 51304070			-70	1	4	70	43	—	11.5	14.5	—	16	47
3060 51304100			-100	1	4	100	73	—	11.5	16.5	—	16	77
3060 51304120			-120	1	4	120	93	—	11.5	16.5	—	16	97
3060 51304135			-135	2	4	135	108	89	11.5	16.5	30	16	112
3060 51304160			-160	2	4	160	133	114	11.5	16.5	30	16	137
3060 51305050	BT40	-SRE5A	-50	1	5	50	23	—	13	16	—	19	27
3060 51305070			-70	1	5	70	43	—	13	16	—	19	47
3060 51305100			-100	1	5	100	73	—	13	18	—	19	77
3060 51305120			-120	1	5	120	93	—	13	18	—	19	97
3060 51305135			-135	2	5	135	108	89	13	18	30	19	112
3060 51305160			-160	2	5	160	133	114	13	18	30	19	137
3060 51306050	BT40	-SRE6A	-50	1	6	50	23	—	13	16	—	19	27
3060 51306070			-70	1	6	70	43	—	13	16	—	27	47
3060 51306100			-100	1	6	100	73	—	13	18	—	27	77
3060 51306120			-120	1	6	120	93	—	13	18	—	27	97
3060 51306135			-135	2	6	135	108	89	13	18	30	27	112
3060 51306160			-160	2	6	160	133	114	13	18	30	27	137
3060 51308050	BT40	-SRE8A	-50	1	8	50	23	—	13	16	—	19	27
3060 51308070			-70	1	8	70	43	—	13	16	—	27	47
3060 51308100			-100	1	8	100	73	—	13	18	—	27	77
3060 51308120			-120	1	8	120	93	—	13	18	—	27	97
3060 51308135			-135	2	8	135	108	89	13	18	30	27	112
3060 51308160			-160	2	8	160	133	114	13	18	30	27	137
3060 52503075	BT50	-SRE3A	-75	2	3	75	37	28	11.5	14.5	30	13	45
3060 52503090			-90	2	3	90	52	43	11.5	14.5	30	13	60
3060 52503120			-120	2	3	120	82	73	11.5	16.5	30	13	90
3060 52503135			-135	2	3	135	97	89	11.5	16.5	30	13	105
3060 52503160			-160	2	3	160	122	114	11.5	16.5	30	13	130
3060 52504075	BT50	-SRE4A	-75	2	4	75	37	28	11.5	14.5	30	16	45
3060 52504090			-90	2	4	90	52	43	11.5	14.5	30	16	60
3060 52504120			-120	2	4	120	82	73	11.5	16.5	30	16	90
3060 52504135			-135	2	4	135	97	89	11.5	16.5	30	16	105
3060 52504160			-160	2	4	160	122	114	11.5	16.5	30	16	130
3060 52505075	BT50	-SRE5A	-75	2	5	75	37	28	13	16	30	19	45
3060 52505090			-90	2	5	90	52	43	13	16	30	19	60
3060 52505120			-120	2	5	120	82	73	13	18	30	19	90
3060 52505135			-135	2	5	135	97	89	13	18	30	19	105
3060 52505160			-160	2	5	160	122	114	13	18	30	19	130
3060 52506075	BT50	-SRE6A	-75	2	6	75	37	28	13	16	30	19	45
3060 52506090			-90	2	6	90	52	43	13	16	30	19	60
3060 52506120			-120	2	6	120	82	73	13	18	30	27	90
3060 52506135			-135	2	6	135	97	89	13	18	30	27	105
3060 52506160			-160	2	6	160	122	114	13	18	30	27	130
3060 52508075	BT50	-SRE8A	-75	2	8	75	37	28	13	16	30	19	45
3060 52508090			-90	2	8	90	52	43	13	16	30	19	60
3060 52508120			-120	2	8	120	82	73	13	18	30	27	90
3060 52508135			-135	2	8	135	97	89	13	18	30	27	105
3060 52508160			-160	2	8	160	122	114	13	18	30	27	130

1. Always use carbide shank tools with h6 tolerance.
2. Use 2pcs. of M4 x 5 (S) hex. screw (included) to close air holes on the chuck when internal coolant is used.
3. Center through coolant is not possible with SRE3A and SRE4A.

Heating device chart		
heating device	chuck	
	L1 ≤ 60mm	L1 > 60mm
ISG3400	Yes *	Yes
SRK-HA1, HB2	No	No

*Special induction coil is needed. Refer to P.500-501.

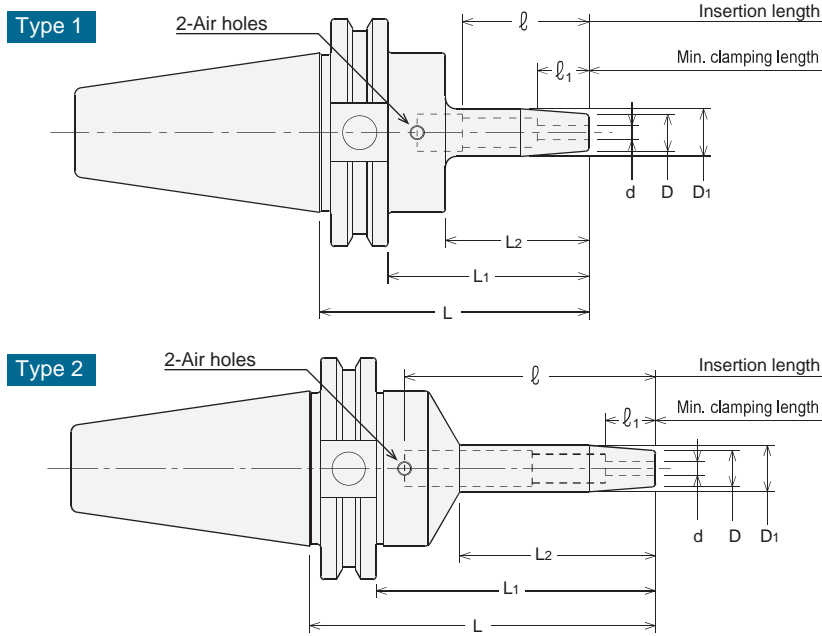
Ordering Example

BT40 - SRE 6 A - 125
 Shank size I.D. (d) Projection length (L)

SRE

Shrink Fit (Small Diameter Type)

● Shrinkage method clamps a cutting tool firmly by heating and cooling the chuck. High precision and strong chucking force. (Small diameter type)



Metric Sizes Unit : Inch

Code	Model	Type	d (mm)	L	L1	L2	D	D1	D2	ℓ1	ℓ	kg
1940 51403060	CAT40 -SRE3A -60	1	3	2.362	1.612	0.982	0.453	0.571	1.750	0.512	1.024	1.0
1940 51403100	-100	1	3	3.937	3.187	2.557	0.453	0.650	1.750	0.512	2.598	
1940 51403120	-120	1	3	4.724	3.974	3.344	0.453	0.650	1.750	0.512	3.386	
1940 51403135	-135	1	3	5.315	4.565	3.504	0.453	0.650	1.750	0.512	3.976	
1940 51403160	-160	2	3	6.299	5.549	4.488	0.453	0.650	1.750	0.512	4.961	1.1
1940 51404060	CAT40 -SRE4A -60	1	4	2.362	1.612	0.982	0.453	0.571	1.750	0.630	1.024	1.0
1940 51404100	-100	1	4	3.937	3.187	2.557	0.453	0.650	1.750	0.630	2.598	
1940 51404120	-120	1	4	4.724	3.974	3.344	0.453	0.650	1.750	0.630	3.386	
1940 51404135	-135	1	4	5.315	4.565	3.504	0.453	0.650	1.750	0.630	3.976	
1940 51404160	-160	2	4	6.299	5.549	4.488	0.453	0.650	1.750	0.630	4.961	
1940 51405060	CAT40 -SRE5A -60	1	5	2.362	1.612	0.982	0.512	0.630	1.750	0.748	1.024	1.0
1940 51405100	-100	1	5	3.937	3.187	2.557	0.512	0.709	1.750	0.748	2.598	
1940 51405120	-120	1	5	4.724	3.974	3.344	0.512	0.709	1.750	0.748	3.386	
1940 51405135	-135	1	5	5.315	4.565	3.543	0.512	0.709	1.750	0.748	3.976	
1940 51405160	-160	2	5	6.299	5.549	4.528	0.512	0.709	1.750	0.748	4.961	
1940 51406060	CAT40 -SRE6A -60	1	6	2.362	1.612	0.982	0.512	0.630	1.750	1.063	1.024	1.0
1940 51406100	-100	1	6	3.937	3.187	2.557	0.512	0.709	1.750	1.063	2.598	1.1
1940 51406120	-120	1	6	4.724	3.974	3.344	0.512	0.709	1.750	1.063	3.386	
1940 51406135	-135	1	6	5.315	4.565	3.504	0.512	0.709	1.750	1.063	3.976	
1940 51406160	-160	2	6	6.299	5.549	4.488	0.512	0.709	1.750	1.063	4.961	
1940 51408060	CAT40 -SRE8A -60	1	8	2.362	1.612	0.982	0.512	0.630	1.750	1.063	1.024	1.0
1940 51408100	-100	1	8	3.937	3.187	2.557	0.512	0.709	1.750	1.063	2.598	
1940 51408120	-120	1	8	4.724	3.974	3.344	0.512	0.709	1.750	1.063	3.386	
1940 51408135	-135	1	8	5.315	4.565	3.504	0.512	0.709	1.750	1.063	3.976	
1940 51408160	-160	2	8	6.299	5.549	4.488	0.512	0.709	1.750	1.063	4.961	

1. Always use carbide shank tools with h6 tolerance.
2. Use 2pcs. of M4 × 5 (S) hex. screw (included) to close air holes on the chuck when internal coolant is used.
3. Center through coolant is not possible with SRE3A and SRE4A.

Heating device chart		
heating device	chuck	
	L1 ≤ 2.362"	L1 > 2.362"
ISG3400	Yes *	Yes
SRK-HA1, HB2	No	No

Ordering Example

CAT40 - SRE 6 A - 120
Shank size
I.D. (d)
Projection length (L)

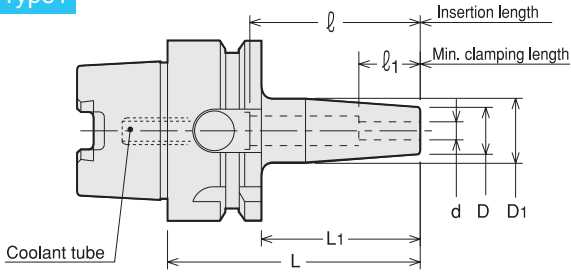
*Special induction coil is needed. Refer to P.500-501.

SRE

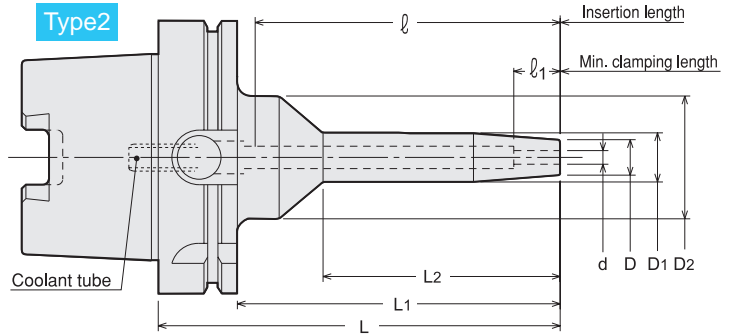
Shrink Fit (Small Diameter Type)

● Shrinkage method sets a cutting tool firmly by heating and cooling the chuck. High precision and strong chucking. (Small diameter type)

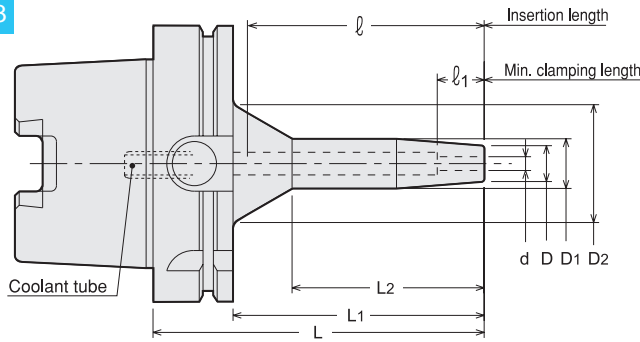
Type1



Type2



Type3



● Coolant tube is included.

Metric Sizes

Unit : Metric

Code	Model	Type	d	L	L1	L2	D	D1	D2	ℓ1	ℓ	
5640 51303045	HSK40A -SRE3A	-45	1	3	45	25	—	11.5	14.5	30	13	23
5640 51303060		-60	1	3	60	40	—	11.5	14.5	30	13	38
5640 51303090		-90	1	3	90	70	—	11.5	16.5	30	13	68
5640 51303115		-115	1	3	115	95	—	11.5	16.5	30	13	93
5640 51303135	HSK40A -SRE4A	-135	2	3	135	115	74	11.5	16.5	30	13	113
5640 51303150		-150	2	3	150	130	89	11.5	16.5	30	13	128
5640 51304045	HSK40A -SRE5A	-45	1	4	45	25	—	12	14.5	30	16	23
5640 51304060		-60	1	4	60	40	—	12	14.5	30	16	38
5640 51304090		-90	1	4	90	70	—	12	16.5	30	16	68
5640 51304115		-115	1	4	115	95	—	12	16.5	30	16	96
5640 51304135	HSK40A -SRE6A	-135	2	4	135	115	74	12	16.5	30	16	113
5640 51304150		-150	2	4	150	130	89	12	16.5	30	16	128
5640 51305045	HSK40A -SRE7A	-45	1	5	45	25	—	13	16	30	19	23
5640 51305060		-60	1	5	60	40	—	13	16	30	19	38
5640 51305090		-90	1	5	90	70	—	13	18	30	19	68
5640 51305115		-115	1	5	115	95	—	13	18	30	19	96
5640 51305135	HSK40A -SRE8A	-135	2	5	135	115	74	13	18	30	19	113
5640 51305150		-150	2	5	150	130	89	13	18	30	19	128
5640 51306045	HSK40A -SRE9A	-45	1	6	45	25	—	13	16	30	19	23
5640 51306060		-60	1	6	60	40	—	13	16	30	27	38
5640 51306090		-90	1	6	90	70	—	13	18	30	27	68
5640 51306115		-115	1	6	115	95	—	13	18	30	27	96
5640 51306135	HSK40A -SRE10A	-135	2	6	135	115	74	13	18	30	27	113
5640 51306150		-150	2	6	150	130	89	13	18	30	27	128
5640 51308045	HSK40A -SRE11A	-45	1	8	45	25	—	13	16	30	19	23
5640 51308060		-60	1	8	60	40	—	13	16	30	27	38
5640 51308090		-90	1	8	90	70	—	13	18	30	27	68
5640 51308115		-115	1	8	115	95	—	13	18	30	27	93
5640 51308135	HSK40A -SRE12A	-135	2	8	135	115	74	13	18	30	27	113
5640 51308150		-150	2	8	150	130	89	13	18	30	27	128

Metric Sizes

Unit : Metric

Code	Model	Type	d	L	L1	L2	D	D1	D2	ℓ1	ℓ
5640 51403050	HSK50A -SRE3A -50	1	3	50	24	—	11.5	14.5	30	13	23
5640 51403070	-70	1	3	70	44	—	11.5	14.5	30	13	43
5640 51403090	-90	1	3	90	64	—	11.5	16.5	30	13	63
5640 51403115	-115	1	3	115	89	—	11.5	16.5	30	13	88
5640 51403135	-135	2	3	135	109	74	11.5	16.5	30	13	108
5640 51403150	-150	2	3	150	124	89	11.5	16.5	30	13	123
5640 51404050	HSK50A -SRE4A -50	1	4	50	24	—	12	14.5	30	16	23
5640 51404070	-70	1	4	70	44	—	12	14.5	30	16	43
5640 51404090	-90	1	4	90	64	—	12	16.5	30	16	63
5640 51404115	-115	1	4	115	89	—	12	16.5	30	16	88
5640 51404135	-135	2	4	135	109	74	12	16.5	30	16	108
5640 51404150	-150	2	4	150	124	89	12	16.5	30	16	123
5640 51405050	HSK50A -SRE5A -50	1	5	50	24	—	13	16	30	19	23
5640 51405070	-70	1	5	70	44	—	13	16	30	19	43
5640 51405090	-90	1	5	90	64	—	13	18	30	19	63
5640 51405115	-115	1	5	115	89	—	13	18	30	19	88
5640 51405135	-135	2	5	135	109	74	13	18	30	19	108
5640 51405150	-150	2	5	150	124	89	13	18	30	19	123
5640 51406050	HSK50A -SRE6A -50	1	6	50	24	—	13	16	30	19	23
5640 51406070	-70	1	6	70	44	—	13	16	30	27	43
5640 51406090	-90	1	6	90	64	—	13	18	30	27	63
5640 51406115	-115	1	6	115	89	—	13	18	30	27	88
5640 51406135	-135	2	6	135	109	74	13	18	30	27	108
5640 51406150	-150	2	6	150	124	89	13	18	30	27	123
5640 51408050	HSK50A -SRE8A -50	1	8	50	24	—	13	16	30	19	23
5640 51408070	-70	1	8	70	44	—	13	16	30	27	43
5640 51408090	-90	1	8	90	64	—	13	18	30	27	63
5640 51408115	-115	1	8	115	89	—	13	18	30	27	88
5640 51408135	-135	2	8	135	109	74	13	18	30	27	108
5640 51408150	-150	2	8	150	124	89	13	18	30	27	123
5640 51503050	HSK63A -SRE3A -50	1	3	50	24	—	12	14.5	30	13	26
5640 51503070	-70	1	3	70	44	—	12	14.5	30	13	46
5640 51503090	-90	1	3	90	64	—	12	16.5	30	13	66
5640 51503120	-120	1	3	120	94	—	12	16.5	30	13	96
5640 51503135	-135	2	3	135	109	59	12	16.5	30	13	111
5640 51503165	-165	2	3	165	139	89	12	16.5	30	13	141
5640 51504050	HSK63A -SRE4A -50	1	4	50	24	—	12	14.5	30	16	26
5640 51504070	-70	1	4	70	44	—	12	14.5	30	16	46
5640 51504090	-90	1	4	90	64	—	12	16.5	30	16	66
5640 51504120	-120	1	4	120	94	—	12	16.5	30	16	96
5640 51504135	-135	2	4	135	109	59	12	16.5	30	16	111
5640 51504165	-165	2	4	165	139	89	12	16.5	30	16	141
5640 51505050	HSK63A -SRE5A -50	1	5	50	24	—	13	16	30	19	26
5640 51505070	-70	1	5	70	44	—	13	16	30	19	46
5640 51505090	-90	1	5	90	64	—	13	18	30	19	66
5640 51505120	-120	1	5	120	94	—	13	18	30	19	96
5640 51505135	-135	2	5	135	109	59	13	18	30	19	111
5640 51505165	-165	2	5	165	139	89	13	18	30	19	141
5640 51506050	HSK63A -SRE6A -50	1	6	50	24	—	13	16	30	19	26
5640 51506070	-70	1	6	70	44	—	13	16	30	27	46
5640 51506090	-90	1	6	90	64	—	13	18	30	27	66
5640 51506120	-120	1	6	120	94	—	13	18	30	27	96
5640 51506135	-135	2	6	135	109	59	13	18	30	27	111
5640 51506165	-165	2	6	165	139	89	13	18	30	27	141
5640 51508050	HSK63A -SRE8A -50	1	8	50	24	—	13	16	30	19	26
5640 51508070	-70	1	8	70	44	—	13	16	30	27	46
5640 51508090	-90	1	8	90	64	—	13	18	30	27	66
5640 51508120	-120	1	8	120	94	—	13	18	30	27	96
5640 51508135	-135	2	8	135	109	59	13	18	30	27	111
5640 51508165	-165	2	8	165	139	89	13	18	30	27	141

1. Always use carbide shank tools with h6 tolerance.
2. Center through coolant is not possible with SRE3A and SRE4A.

Heating device chart		
heating device	chuck	
	L1 ≤ 60mm	L1 > 60mm
ISG3400	Yes *	Yes
SRK-HA1, HB2	No	No

*Special induction coil is needed. Refer to P.500-501.

Ordering Example

HSK40A - SRE 6 A - 45

Shank size

I.D. (d)

Projection length (L)

Metric Sizes

Unit : Metric

Code	Model	Type	d	L	L1	L2	D	D1	D2	ℓ1	ℓ
5640 51703090	HSK100A -SRE3A -90	3	3	90	61	39	11.5	16.5	41	13	59
5640 51703120	-120	3	3	120	91	69	11.5	16.5	41	13	89
5640 51703150	-150	2	3	150	121	59	11.5	16.5	45	13	119
5640 51703180	-180	2	3	180	151	89	11.5	16.5	45	13	149
5640 51704090	HSK100A -SRE4A -90	3	4	90	61	39	12	16.5	41	16	59
5640 51704120	-120	3	4	120	91	69	12	16.5	41	16	89
5640 51704150	-150	2	4	150	121	59	12	16.5	45	16	119
5640 51704180	-180	2	4	180	151	89	12	16.5	45	16	149
5640 51705090	HSK100A -SRE5A -90	3	5	90	61	39	13	18	42	19	59
5640 51705120	-120	3	5	120	91	69	13	18	42	19	89
5640 51705150	-150	2	5	150	121	59	13	18	45	19	119
5640 51705180	-180	2	5	180	151	89	13	18	45	19	149
5640 51706090	HSK100A -SRE6A -90	3	6	90	61	39	13	18	42	19	59
5640 51706120	-120	3	6	120	91	69	13	18	42	27	89
5640 51706150	-150	2	6	150	121	59	13	18	45	27	119
5640 51706180	-180	2	6	180	151	89	13	18	45	27	149
5640 51708090	HSK100A -SRE8A -90	3	8	90	61	39	13	18	42	19	59
5640 51708120	-120	3	8	120	91	69	13	18	42	27	89
5640 51708150	-150	2	8	150	121	59	13	18	45	27	119
5640 51708180	-180	2	8	180	151	89	13	18	45	27	149

1. Always use carbide shank tools with h6 tolerance.
2. Center through coolant is not possible with SRE3A and SRE4A.

Heating device chart		
heating device	chuck	
	L1 ≤ 60mm	L1 > 60mm
ISG3400	Yes *	Yes
SRK-HA1, HB2	No	No

*Special induction coil is needed. Refer to P.500-501.

Ordering Example

HSK100A - SRE 3 A - 90
 Shank size I.D. (d) Projection length (L)

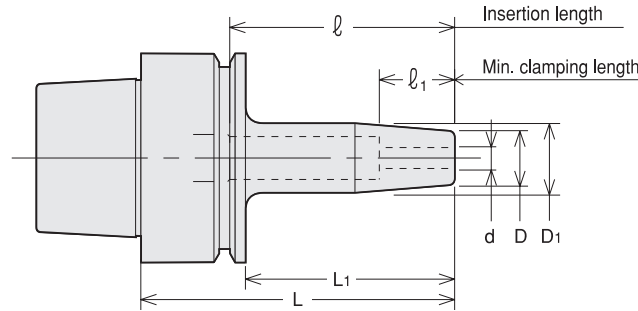
- BT
- CAT
- AHO
- HSK-A/E/F/C
- HSK-T
- UTS
- Specialized Machine
- Related Equipment
- Bush & Chamfering Drill
- Milling Chuck
- Collet Holder
- "R"-Zero Holder
- Hydraulic Chuck
- Shrink Fit
- Tapping Chuck
- Arbors
- Function Holder
- HSK-E
- HSK-F
- HSK-C
- Tool Shank Dimensions



SRE

Shrink Fit (Small Diameter Type)

● Shrinkage method sets a cutting tool firmly by heating and cooling the chuck. High precision and strong chucking. (Small diameter type)



Metric Sizes

Unit : Metric

Code	Model	d	L	L1	D	D1	l1	l
5640 91103035	HSK25E -SRE3A -35	3	35	25	11.5	14.5	13	20
5640 91103050	-50	3	50	40	11.5	14.5	13	35
5640 91104035	HSK25E -SRE4A -35	4	35	25	11.5	14.5	16	20
5640 91104050	-50	4	50	40	11.5	14.5	16	35
5640 91105035	HSK25E -SRE5A -35	5	35	25	13	16	19	20
5640 91105050	-50	5	50	40	13	16	19	35
5640 91106035	HSK25E -SRE6A -35	6	35	25	13	16	19	20
5640 91106050	-50	6	50	40	13	16	19	35
5640 91108035	HSK25E -SRE8A -35	8	35	25	13	16	19	20
5640 91108050	-50	8	50	40	13	16	19	35
5640 91203045	HSK32E -SRE3A -45	3	45	25	11.5	14.5	13	28
5640 91203060	-60	3	60	40	11.5	14.5	13	43
5640 91204045	HSK32E -SRE4A -45	4	45	25	11.5	14.5	16	28
5640 91204060	-60	4	60	40	11.5	14.5	16	43
5640 91205045	HSK32E -SRE5A -45	5	45	25	13	16	19	28
5640 91205060	-60	5	60	40	13	16	19	43
5640 91206045	HSK32E -SRE6A -45	6	45	25	13	16	19	28
5640 91206060	-60	6	60	40	13	16	19	43
5640 91208045	HSK32E -SRE8A -45	8	45	25	13	16	19	28
5640 91208060	-60	8	60	40	13	16	19	43
5640 91303045	HSK40E -SRE3A -45	3	45	25	11.5	14.5	13	28
5640 91303060	-60	3	60	40	11.5	14.5	13	43
5640 91304045	HSK40E -SRE4A -45	4	45	25	11.5	14.5	16	28
5640 91304060	-60	4	60	40	11.5	14.5	16	43
5640 91305045	HSK40E -SRE5A -45	5	45	25	13	16	19	28
5640 91305060	-60	5	60	40	13	16	19	43
5640 91306045	HSK40E -SRE6A -45	6	45	25	13	16	19	28
5640 91306060	-60	6	60	40	13	16	19	43
5640 91306080	-80	6	80	60	13	18	19	63
5640 91308045	HSK40E -SRE8A -45	8	45	25	13	16	19	28
5640 91308060	-60	8	60	40	13	16	19	43
5640 91308080	-80	8	80	60	13	18	19	63
5640 91403050	HSK50E -SRE3A -50	3	50	24	11.5	14.5	13	31
5640 91403070	-70	3	70	44	11.5	14.5	13	51
5640 91404050	HSK50E -SRE4A -50	4	50	24	11.5	14.5	16	31
5640 91404070	-70	4	70	44	11.5	14.5	16	51
5640 91405050	HSK50E -SRE5A -50	5	50	24	13	16	19	31
5640 91405070	-70	5	70	44	13	16	19	51
5640 91406050	HSK50E -SRE6A -50	6	50	24	13	16	19	31
5640 91406070	-70	6	70	44	13	16	19	51
5640 91406090	-90	6	90	64	13	18	19	71
5640 91408050	HSK50E -SRE8A -50	8	50	24	13	16	19	31
5640 91408070	-70	8	70	44	13	16	19	51
5640 91408090	-90	8	90	64	13	18	19	71

Heating device chart

heating device	chuck	
	L1 ≤ 60mm	L1 > 60mm
ISG3400	Yes *	Yes
SRK-HA1, HB2	No	No

*Special induction coil is needed. Refer to P.500-501.

1. Always use carbide shank tools with h6 tolerance.
2. Center through coolant is not possible with SRE3A and SRE4A.

Ordering Example

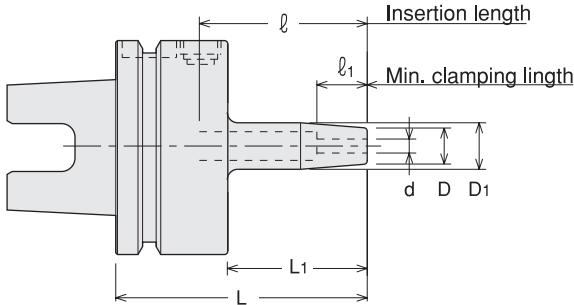
HSK40E - SRE 6 A - 80
 Shank size I.D. (d) Projection length (L)

SRE

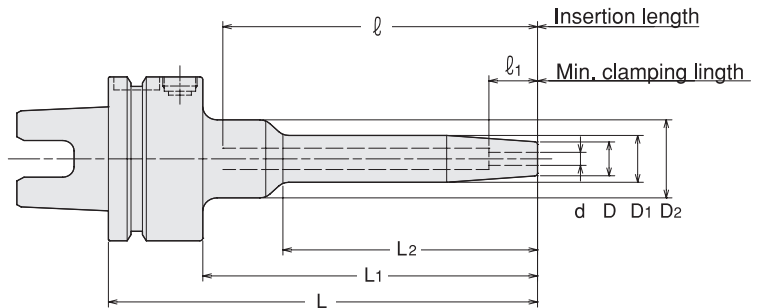
Shrink Fit (Small Diameter Type)

● Shrinkage method sets a cutting tool firmly by heating and cooling the chuck. High precision and strong chucking. (Small diameter type)

Type1



Type2



Metric Sizes

Unit : Metric

Code	Model	Type	d	L	L1	L2	D	D1	D2	l ₁	l
1300 51103060	UTS5040 -SRE3A -60-H	1	3	60	30	-	11.5	14.5	-	13	47
1300 51103090	-90-H	1	3	90	60	-	11.5	16.5	-	13	77
1300 51103120	-120-H	1	3	120	90	-	11.5	16.5	-	13	107
1300 51104060	UTS5040 -SRE4A -60-H	1	4	60	30	-	11.5	14.5	-	16	47
1300 51104090	-90-H	1	4	90	60	-	11.5	16.5	-	16	77
1300 51104120	-120-H	1	4	120	90	-	11.5	16.5	-	16	107
1300 51105060	UTS5040 -SRE5A -60-H	1	5	60	30	-	13	16	-	19	47
1300 51105090	-90-H	1	5	90	60	-	13	18	-	19	77
1300 51105120	-120-H	1	5	120	90	-	13	18	-	19	107
1300 51106060	UTS5040 -SRE6A -60-H	1	6	60	30	-	13	16	-	27	47
1300 51106090	-90-H	1	6	90	60	-	13	18	-	27	77
1300 51106120	-120-H	1	6	120	90	-	13	18	-	27	107
1300 51108060	UTS5040 -SRE8A -60-H	1	8	60	30	-	13	16	-	27	47
1300 51108090	-90-H	1	8	90	60	-	13	18	-	27	77
1300 51108120	-120-H	1	8	120	90	-	13	18	-	27	107
1300 5 ※ 203060	UTS6350 -SRE3A -60	1	3	60	27	-	11.5	14.5	-	13	47
1300 5 ※ 203090	-90	1	3	90	57	-	11.5	16.5	-	13	77
1300 5 ※ 203120	-120	1	3	120	87	-	11.5	16.5	-	13	107
1300 5 ※ 203150	-150	2	3	150	117	89	11.5	16.5	30	13	137
1300 5 ※ 204060	UTS6350 -SRE4A -60	1	4	60	27	-	11.5	14.5	-	16	47
1300 5 ※ 204090	-90	1	4	90	57	-	11.5	16.5	-	16	77
1300 5 ※ 204120	-120	1	4	120	87	-	11.5	16.5	-	16	107
1300 5 ※ 204150	-150	2	4	150	117	89	11.5	16.5	30	16	137
1300 5 ※ 205060	UTS6350 -SRE5A -60	1	5	60	27	-	13	16	-	19	47
1300 5 ※ 205090	-90	1	5	90	57	-	13	18	-	19	77
1300 5 ※ 205120	-120	1	5	120	87	-	13	18	-	19	107
1300 5 ※ 205150	-150	2	5	150	117	89	13	18	30	19	137
1300 5 ※ 206060	UTS6350 -SRE6A -60	1	6	60	27	-	13	16	-	19	47
1300 5 ※ 206090	-90	1	6	90	57	-	13	18	-	27	77
1300 5 ※ 206120	-120	1	6	120	87	-	13	18	-	27	107
1300 5 ※ 206150	-150	2	6	150	117	89	13	18	30	27	137
1300 5 ※ 208060	UTS6350 -SRE8A -60	1	8	60	27	-	13	16	-	19	47
1300 5 ※ 208090	-90	1	8	90	57	-	13	18	-	27	77
1300 5 ※ 208120	-120	1	8	120	87	-	13	18	-	27	107
1300 5 ※ 208150	-150	2	8	150	117	89	13	18	30	27	137

Metric Sizes											Unit : Metric	
Code	Model	Type	d	L	L1	L2	D	D1	D2	ℓ1	ℓ	
1300 5 ※ 303090	UTS10080 -SRE3A -90	1	3	90	56	-	11.5	16.5	-	13	77	
1300 5 ※ 303120	-120	1	3	120	86	-	11.5	16.5	-	13	107	
1300 5 ※ 303135	-135	2	3	135	101	59	11.5	16.5	30	13	122	
1300 5 ※ 303165	-165	2	3	165	131	89	11.5	16.5	30	13	152	
1300 5 ※ 304090	UTS10080 -SRE4A -90	1	4	90	56	-	11.5	16.5	-	16	77	
1300 5 ※ 304120	-120	1	4	120	86	-	11.5	16.5	-	16	107	
1300 5 ※ 304135	-135	2	4	135	101	59	11.5	16.5	30	16	122	
1300 5 ※ 304165	-165	2	4	165	131	89	11.5	16.5	30	16	152	
1300 5 ※ 305090	UTS10080 -SRE5A -90	1	5	90	56	-	13	18	-	19	77	
1300 5 ※ 305120	-120	1	5	120	86	-	13	18	-	19	107	
1300 5 ※ 305135	-135	2	5	135	101	59	13	18	30	19	122	
1300 5 ※ 305165	-165	2	5	165	131	89	13	18	30	19	152	
1300 5 ※ 306090	UTS10080 -SRE6A -90	1	6	90	56	-	13	18	-	27	77	
1300 5 ※ 306120	-120	1	6	120	86	-	13	18	-	27	107	
1300 5 ※ 306135	-135	2	6	135	101	59	13	18	30	27	122	
1300 5 ※ 306165	-165	2	6	165	131	89	13	18	30	27	152	
1300 5 ※ 308090	UTS10080 -SRE8A -90	1	8	90	56	-	13	18	-	27	77	
1300 5 ※ 308120	-120	1	8	120	86	-	13	18	-	27	107	
1300 5 ※ 308135	-135	2	8	135	101	59	13	18	30	27	122	
1300 5 ※ 308165	-165	2	8	165	131	89	13	18	30	27	152	

When placing an order, please specify high or low pressure. For high pressure type, please add (-H) on end of the description.

1. Always use carbide shank tools with h6 tolerance.
2. UTS5040 is available in high pressure only.
3. Center through coolant is not possible with SRE3A and SRE4A.

Heating device chart		
heating device	chuck	
	L1 ≤ 60mm	L1 > 60mm
ISG3400	Yes *	Yes
SRK-HA1, HB2	No	No

*Special induction coil is needed. Refer to P.500-501.

Ordering Example

Low pressure type
 0 ~ 1.0MPa (UTS10080 : 0 ~ 2.0MPa)
UTS6350 - SRE 6 A - 90
Shank size I.D. (d) Projection length (L)

Ordering Example

High pressure type
 1.1 ~ 7.0MPa (UTS10080 : 2.1 ~ 7.0MPa)
UTS6350 - SRE 6 A - 90 - H
Shank size I.D. (d) Projection length (L) High pressure type

