

Tap size reference chart (collet, preset driver)

FDC-07 or FSC - collet

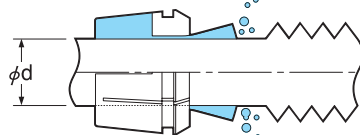
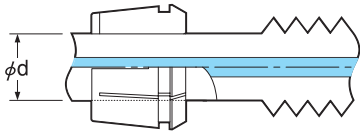
preset driver & tool for changing driver

OH Type

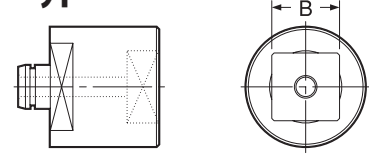
● OH type collet should be used for center-through coolant feeding and external coolant feeding.

C Type

● when "collet-through" coolant feeding is needed.



STS Type



STS-R Type



※ Please select OH type for non-coolant use.

Holder Model	Tap Size					ød	Collet Model (OH or C)	B	Preset Driver	Tool for Changing Driver
	Metric Thread	Unified Thread	Pipe Taper Thread	OSG Synchro-Taps	YAMAWA X Series					
STM8	M4~M4.5	UNo.8				5.0	FDC-05007-**	4.0	STS8-□4.0	STS-R0
	M5~M5.5	UNo.10~12				5.5	FDC-05507-**	4.5	STS8-□4.5	STS-R0
	M6	U1/4		M4~M6		6.0	FDC-06007-**	4.5	STS8-□4.5	STS-R0
		U5/16			M6	6.0	FDC-06007-**	4.9	STS8-□4.9	STS-R0
	M7~8					6.1	FDC-06107-**	5.0	STS8-□5.0	STS-R0
					6.2	FDC-06207-**	5.0	STS8-□5.0	STS-R0	
STM12	M4~M4.5	UNo.8				5.0	FSC-09-5.0-**	4.0	STS12-□4.0	STS-R1
	M5~M5.5	UNo.10~12				5.5	FSC-09-5.5-**	4.5	STS12-□4.5	STS-R1
	M6	U1/4		M4~M6		6.0	FSC-09-6.0-**	4.5	STS12-□4.5	STS-R1
		U5/16			M6	6.0	FSC-09-6.0-**	4.9	STS12-□4.9	STS-R1
	M7~8					6.1	FSC-09-6.1-**	5.0	STS12-□5.0	STS-R1
	M9~M10	U3/8				7.0	FSC-09-7.0-**	5.5	STS12-□5.5	STS-R1
					M8	8.0	FSC-09-8.0-**	6.2	STS12-□6.2	STS-R1
	M11	U7/16	PT1/16~1/8	M8~M10		8.0	FSC-09-8.0-**	6.0	STS12-□6.0	STS-R1
	M12					8.5	FSC-09-8.5-**	6.5	STS12-□6.5	STS-R1
		U1/2				9.0	FSC-16-9.0-**	7.0	STS18-□7.0	STS-R2
STM18	M13					9.5	FSC-16-9.5-**	7.0	STS18-□7.0	STS-R2
				M12	M10	10.0	FSC-16-10.0-**	8.0	STS18-□8.0	STS-R2
	M14~15	U9/16				10.5	FSC-16-10.5-**	8.0	STS18-□8.0	STS-R2
			PT1/4			11.0	FSC-16-11.0-**	9.0	STS18-□9.0	STS-R2
		U5/8		M14	M12	12.0	FSC-16-12.0-**	9.0	STS18-□9.0	STS-R2
	M16					12.5	FSC-16-12.5-**	10.0	STS18-□10.0	STS-R2
	M17					13.0	FSC-16-13.0-**	10.0	STS18-□10.0	STS-R2
	M18~M19	U3/4	PT3/8			14.0	FSC-16-14.0-**	11.0	STS18-□11.0	STS-R2
STM30	M20					15.0	FSC-22-15.0-**	12.0	STS30-□12.0	STS-R2
	M21			M16~M20		16.0	FSC-22-16.0-**	12.0	STS30-□12.0	STS-R2
	M22	U7/8				17.0	FSC-22-17.0-**	13.0	STS30-□13.0	STS-R2
	M23		PT1/2			18.0	FSC-22-18.0-**	14.0	STS30-□14.0	STS-R2
	M24~M25		PT5/8			19.0	FSC-22-19.0-**	15.0	STS30-□15.0	STS-R2
	M26~M27	U1		M22~M27		20.0	FSC-22-20.0-**	15.0	STS30-□15.0	STS-R2
	M28					21.0	FSC-22-21.0-**	17.0	STS30-□17.0	STS-R2
		U1-1/8				22.0	FSC-22-22.0-**	17.0	STS30-□17.0	STS-R2
						23.0	FSC-22-23.0-**	17.0	STS30-□17.0	STS-R2
	M30		PT3/4							

Ordering Example

FSC - 22 - 20.0 - OH

Collet size

Collet I.D. (d)

OH: for tool with coolant hole
C: for collet through

Combination of accessories

Tap holder	Collet	Preset driver		Nut		Tool changing driver		Spanner	
Model	Model	Model	Code	Model	Code	Model	Code	Model	Code
STM8	FDC-07	STS8	3914 0100**03	KDP-1414	0070 01001407	STS-R0	3914 00000006	Flat 17mm width	
STM12	FSC-09	STS12	3914 1100**03	HTP-09	1314 00000009	STS-R1	3914 10000006	S-1L	0803 00000011
STM18	FSC-16	STS18	3914 310**03	HTP-16	1314 00000016	STS-R2	3914 30000006	S-4L	0803 00000014
STM30	FSC-22	STS30	3914 410**03	HTP-22	1314 00000022	STS-R2	3914 30000006	S-5L	0803 00000015

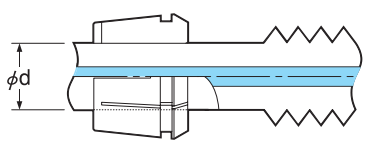
Tap size reference chart (collet, preset driver)

FDC-07 or FSC - collet

preset driver & tool for changing driver

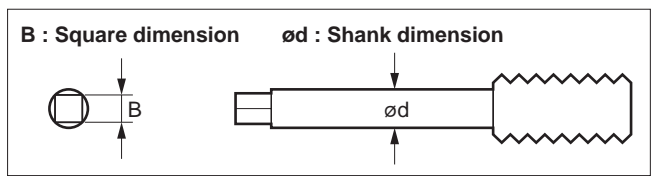
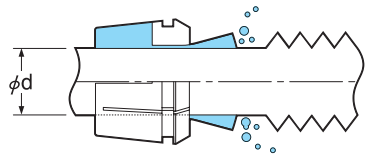
OH Type

● OH type collet should be used for center-through coolant feeding and external coolant feeding.

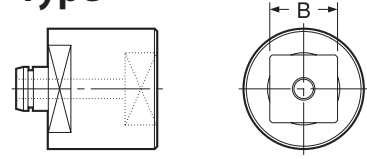


C Type

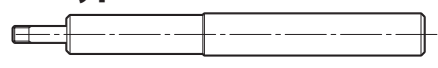
● when "collet-through" coolant feeding is needed.



STS Type



STS-R Type



※ Please select OH type for non-coolant use.

Holder Model	Tap Size (ANSI)	ød (inch)	ød (mm)	Collet Model (OH or C)	B (inch)	B (mm)	Preset Driver
STM8	#0-6	0.141	3.5814	FDC-03607**	0.110	2.794	STS8- □ 2.8
	#8	0.168	4.2672	FDC-04307**	0.131	3.3274	STS8- □ 3.4
	#10	0.194	4.9276	FDC-05007**	0.152	3.8608	STS8- □ 4.0
	#12	0.22	5.588	FDC-05607**	0.165	4.191	STS8- □ 4.2
	1/4	0.255	6.477	FDC-06507**	0.191	4.8514	STS8- □ 5.0
STM12	#0-6	0.141	3.5814	FSC-09-3.6**	0.110	2.794	STS12- □ 2.8
	#8	0.168	4.2672	FSC-09-4.3**	0.131	3.3274	STS12- □ 3.4
	#10	0.194	4.9276	FSC-09-5.0**	0.152	3.8608	STS12- □ 4.0
	#12	0.22	5.588	FSC-09-5.6**	0.165	4.191	STS12- □ 4.2
	1/4	0.255	6.477	FSC-09-6.5**	0.191	4.8514	STS12- □ 5.0
	1/8SPT	0.313	7.9502	FSC-09-8.0**	0.234	5.9436	STS12- □ 6.0
	5/16	0.318	8.0772	FSC-09-8.1**	0.238	6.0452	STS12- □ 6.1
7/16	0.323	8.2042	FSC-09-8.3**	0.242	6.1468	STS12- □ 6.2	
STM18	1/2	0.367	9.3218	FSC-16-9.4**	0.275	6.985	STS18- □ 7.0
	3/8	0.381	9.6774	FSC-16-9.7**	0.286	7.2644	STS18- □ 7.3
	9/16	0.429	10.8966	FSC-16-10.9**	0.322	8.1788	STS18- □ 8.2
	1/8LPT	0.437	11.0998	FSC-16-11.1**	0.328	8.3312	STS18- □ 8.4
	5/8	0.48	12.192	FSC-16-12.2**	0.360	9.144	STS18- □ 9.2
	11/16	0.542	13.7668	FSC-16-13.8**	0.406	10.3124	STS18- □ 10.4
	1/4PT	0.562	14.2748	FSC-16-14.3**	0.421	10.6934	STS18- □ 10.7
STM30	3/4	0.59	14.986	FSC-22-15.0**	0.442	11.2268	STS30- □ 11.3
	13/16	0.652	16.5608	FSC-22-16.6**	0.489	12.4206	STS30- □ 12.5
	7/8	0.697	17.7038	FSC-22-17.8**	0.523	13.2842	STS30- □ 13.3
	3/8PT	0.7	17.78	FSC-22-17.8**	0.531	13.4874	STS30- □ 13.5
	1	0.8	20.32	FSC-22-20.4**	0.600	15.24	STS30- □ 15.3

For DIN and ISO, please refer to P.463-464.

Ordering Example

FSC - 22 - 20.4 - OH

Collet size Collet I.D. (d) OH: for tool with coolant hole
C: for collet through

Combination of accessories

Tap holder	Collet	Preset driver		Nut		Tool changing driver		Spanner	
Model	Model	Model	Code	Model	Code	Model	Code	Model	Code
STM8	FDC-07	STS8	3914 0100**03	KDP-1414	0070 01001407	STS-R0	3914 00000006	Flat 17mm width	
STM12	FSC-09	STS12	3914 1100**03	HTP-09	1314 00000009	STS-R1	3914 10000006	S-1L	0803 00000011
STM18	FSC-16	STS18	3914 310**03	HTP-16	1314 00000016	STS-R2	3914 30000006	S-4L	0803 00000014
STM30	FSC-22	STS30	3914 410**03	HTP-22	1314 00000022	STS-R2	3914 30000006	S-5L	0803 00000015

