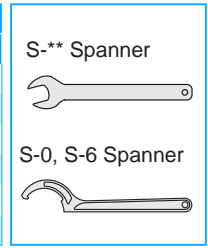


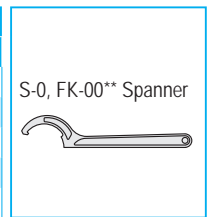
HDC-A, HDZ, SDM, KH-E

Collet		Nut		Spanner	
Model	Code	Model	Code	Model	Code
FDC-07	—	HDP-07A	0070 03001407	S-0	0803 00000000
FDC-09	—	HDP-09	2544 00000009	S-1L	0803 00000011
FDC-12	—	HDP-12	2544 00000012	S-3L	0803 00000013
FDC-16	—	HDP-16	2544 00000016	S-4L	0803 00000014
FDC-22	—	HDP-22	2544 00000022	S-5L	0803 00000015
FDC-32	—	HDP-32	0070 00105648	S-6	0803 00000006



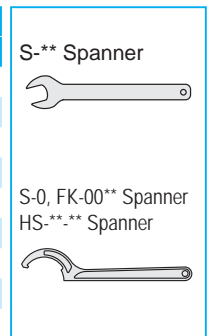
GDC-A, GDZ

Collet		Nut		Spanner	
Model	Code	Model	Code	Model	Code
FDC-07AA	—	HDP-07A	0070 03001407	S-0	0803 00000000
FDC-09AA	—	GDP-09	2444 00000009	FK-0025	2445 00000025
FDC-12AA	—	GDP-12	2444 00000012	FK-0034	2445 00000034
FDC-16AA	—	GDP-16	2444 00000016	FK-0034	2445 00000034
FDC-22AA	—	GDP-22	2444 00000022	FK-0045	2445 00000045

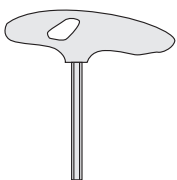


ERC, ERC-T, ERZ

Collet		Nut		Spanner	
Model	Code	Model	Code	Model	Code
ER8	—	ERP-8	2554 00000008	S-8E	0803 00000007
ER11	—	ERP-11S	2554 00000010	S-11E	0803 00000008
ER11	—	HDP-07A	0070 03001407	S-0	0803 00000000
ER16	—	ERP-16	2554 00000016	FK-0034	2445 00000034
ER20	—	ERP-20	2554 00000020	FK-0034	2445 00000034
ER25	—	ERP-25	2554 00000025	HS-1-16	0711 00001016
ER32	—	ERP-32	2554 00000032	HS-2-20	0711 00002020
ER40	—	ERP-40	2554 00000040	HS-2.5-25	0711 00002525
ER50	—	ERP-50	2554 00000050	HS-4-42	0711 00004042



Hex. Wrench



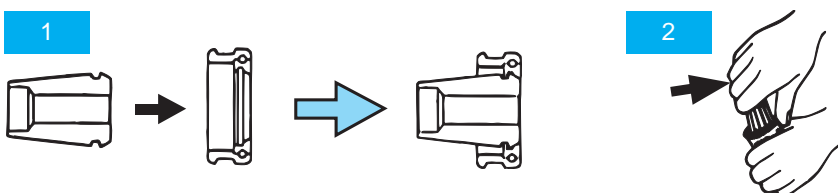
Model	Code
L-3T	6080 00000030
L-4T	6080 00115576
L-5T	6080 00115577
L-6T	6080 00115578

Spanner Head / Torque Wrench



See P.499 for Spanner Head / Torque wrench.

Collet insertion and removal



- To attach**
Place FDC collet into threaded end of HDP nut. Press down on rear of the collet to "clip" the collet into the nut.
- To remove**
While holding HDP nut firmly in one hand grasp FDC collet in the other while pushing sideways.