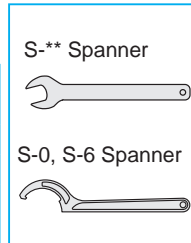


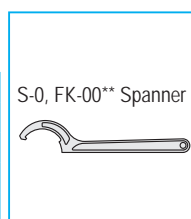
HDC-A, HDZ, SDM, KH-E

Collet		Nut		Spanner	
Model	Code	Model	Code	Model	Code
FDC-07	—	HDP-07A	0070 03001407	S-0	0803 00000000
FDC-09	—	HDP-09	2544 00000009	S-1L	0803 00000011
FDC-12	—	HDP-12	2544 00000012	S-3L	0803 00000013
FDC-16	—	HDP-16	2544 00000016	S-4L	0803 00000014
FDC-22	—	HDP-22	2544 00000022	S-5L	0803 00000015
FDC-32	—	HDP-32	0070 00105648	S-6	0803 00000006



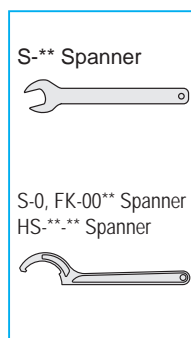
GDC-A, GDZ

Collet		Nut		Spanner	
Model	Code	Model	Code	Model	Code
FDC-07AA	—	HDP-07A	0070 03001407	S-0	0803 00000000
FDC-09AA	—	GDP-09	2444 00000009	FK-0025	2445 00000025
FDC-12AA	—	GDP-12	2444 00000012	FK-0034	2445 00000034
FDC-16AA	—	GDP-16	2444 00000016	FK-0034	2445 00000034
FDC-22AA	—	GDP-22	2444 00000022	FK-0045	2445 00000045

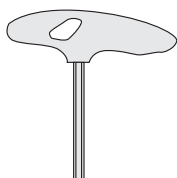


ERC, ERC-T, ERZ

Collet		Nut		Spanner	
Model	Code	Model	Code	Model	Code
ER8	—	ERP-8	2554 00000008	S-8E	0803 00000007
ER11	—	ERP-11S	2554 00000010	S-11E	0803 00000008
ER11	—	HDP-07A	0070 03001407	S-0	0803 00000000
ER16	—	ERP-16	2554 00000016	FK-0034	2445 00000034
ER20	—	ERP-20	2554 00000020	FK-0034	2445 00000034
ER25	—	ERP-25	2554 00000025	HS-1-16	0711 00001016
ER32	—	ERP-32	2554 00000032	HS-2-20	0711 00002020
ER40	—	ERP-40	2554 00000040	HS-2.5-25	0711 00002525
ER50	—	ERP-50	2554 00000050	HS-4-42	0711 00004042

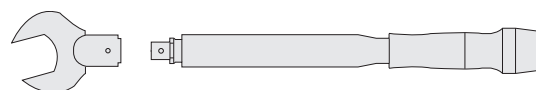


Hex. Wrench



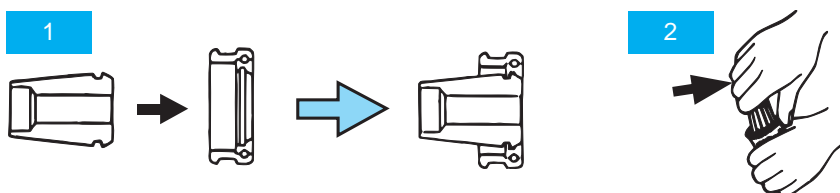
Model	Code
L-3T	6080 00000030
L-4T	6080 00115576
L-5T	6080 00115577
L-6T	6080 00115578

Spanner Head / Torque Wrench



See P.499 for Spanner Head / Torque wrench.

Collet insertion and removal

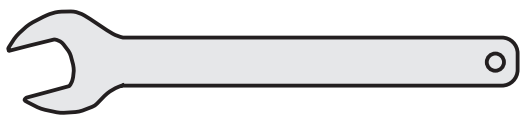


- To attach**
Place FDC collet into threaded end of HDP nut. Press down on rear of the collet to "clip" the collet into the nut.
- To remove**
While holding HDP nut firmly in one hand grasp FDC collet in the other while pushing sideways.

Combination of accessories

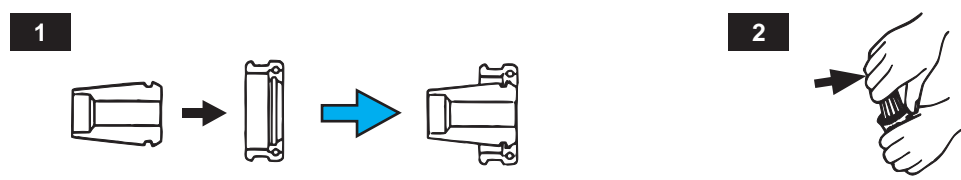
Collet		Nut		Spanner	
Code	Model	Code	Model	Code	Model
2480 0120 ※※ 07	FDC-07A	0070 01001407	KDP-1414	—	Flat17mm width
0070 000190 ※※	EDC-19	0070 00001916	KDP-1916	0803 00000011	S-1L
0070 00024 ※※※	EDC-24	0070 00002422	KDP-2422	0803 00000013	S-3L
0070 00028 ※※※	EDC-28	0070 00002825	KDP-2825	0803 00000014	S-4L
0070 00036 ※※※	EDC-36	0070 00003632	KDP-3632	0803 00000015	S-5L
2480 003 ※※※ 32	FDC-32B	2544 00000032	HDP-32	0803 00000006	S-6

Spanner



Use of NT spanners on NT products prevent over-tightening and breakage.
As NT spanner flats are made to NT specifications, conventional spanner may not fit properly on NT products.

Collet insertion and removal



1. To insert
Place EDC collet into threaded end of KDP nut. Press down on rear of the collet to "clip" the collet into the nut.
2. To remove
While holding KDP nut firmly in one hand grasp EDC collet in the other while pushing sideways.