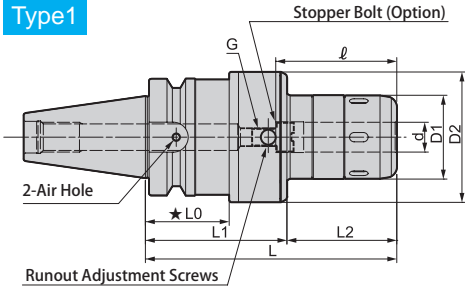


CTZ

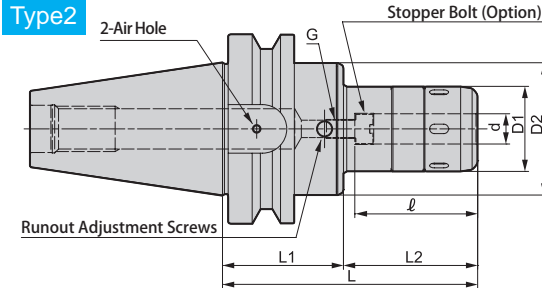
"R"Zero Holder for Large Diameter

- Runout of the cutting edge can be adjusted as close as to zero. Suitable for large diameter reaming.

Type1



Type2



Caution
★ Take caution against A.T.C. arm and tool magazine interference.

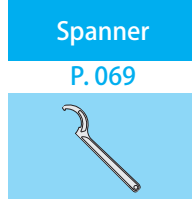
Caution
Please rotate the clamping ring counterclockwise more than 360 degrees after a cutting tool is removed.

Metric Sizes Unit : Metric

Code	Model	Type	d	L	L1	L2	D1	D2	L0	ℓ	G P=1.0	Spanner	Hex. Wrench
295010325125	BT40 -CTZ25A -125	1	25	125	64	61	61	74	★ 38	80	12	HS-2.5-25	L-6L (Included)
295010325150	-150	1	25	150	74	76	61	74	48	80	12		
295010332125	BT40 -CTZ32A -125	1	32	125	64	61	68	80	★ 35	110	18	HS-3-32	
295010332150	-150	1	32	150	74	76	68	80	45	120	18		
295010525125	BT50 -CTZ25A -125	2	25	125	64	61	61	74	—	80	12	HS-2.5-25	
295010525165	-165	2	25	165	64	101	61	74	—	80	12		
295010532125	BT50 -CTZ32A -125	2	32	125	64	61	68	80	—	120	18	HS-3-32	
295010532165	-165	2	32	165	64	101	68	80	—	120	18		
295000542125	BT50 -CTZ42 -125	2	42	125	64	61	88	99	—	120	18	HS-4-42	
295000542165	-165	2	42	165	64	101	88	99	—	120	18		

1. When ordering, indicate number of spanners required. "No charge" spanners are limited to number of holders on order.
2. Hex. wrench is included.
3. All accessories including straight collets can be used with above holders.
4. Use 2pcs. of M4 x 5(S)hex. screw (included) to close air holes on the holder when internal coolant is used.

Ordering Example
BT40 - CTZ 32 A - 125
 Shank size I.D. (d) Projection length (L)



Stopper Bolt BL (P.068)	Straight Collet MC (P.066) MCA (P.067)	Morse Taper Adapter MA (P.068) MAB (P.068)	Jacobs Adapter JA (P.069) JAB (P.069)
----------------------------	---	---	--

Min. chucking length

Direct Chucking (without MC Collet)

I.D. of Chuck	Min. chucking length
25,32,42	50

With MC Collet

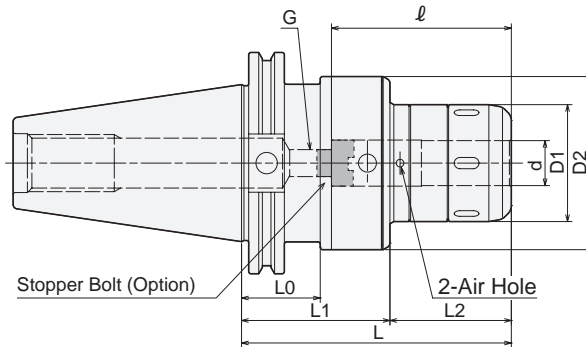
Collet I.D.	Min. chucking length	
	MC	MC-C, MC-OH
6,8	30	30
10,12	40	40
16,20	45	45
25	50	50
32	50	50



CTZ

"R"Zero Holder for Large Diameter

- Runout of the cutting edge can be adjusted as close as to zero. Suitable for large diameter reaming.



Caution

Please rotate the clamping ring counterclockwise more than 360 degrees after a cutting tool is removed.

Metric Sizes														Unit : Metric	
Code	Model	Type	d	L	L1	L2	D1	D2	L0	ℓ	G P=1.0	Spanner	Hex. Wrench		
1850 11432135	CAT40 -CTZ1000A -135	1	25.4	135	64	71	61	74	35	80	12	HS-2.5-25	L-6L (Included)		
1850 11432150	-150	1	25.4	150	64	86	61	74	35	80	12				
1850 11440135	-CTZ1250A -135	1	31.75	135	64	71	68	80	35	120	18	HS-3-32			
1850 11440150	-150	1	31.75	150	64	86	68	80	35	120	18				
1850 11532135	CAT50 -CTZ1000A -135	1	25.4	135	64	71	61	74	35	80	12	HS-2.5-25			
1850 11532150	-150	1	25.4	150	64	86	61	74	35	80	12				
1850 11540135	-CTZ1250A -135	1	31.75	135	64	71	68	80	35	120	18	HS-3-32			
1850 11540150	-150	1	31.75	150	64	86	68	80	35	120	18				

1. When ordering, indicate number of spanners required. "No charge" spanners are limited to number of holders on order.
2. A L-6L wrench is included.
3. All accessories including straight collets can be used with above holders.
4. Use 2pcs. of M4 × 5(S)hex. screw to close air holes on the holder when internal coolant is used.

Stopper Bolt BL (P.068)	Straight Collet MC (P.066) MCA (P.067)	Morse Taper Adapter MA (P.068) MAB (P.068)	Jacobs Adapter JA (P.069) JAB (P.069)
----------------------------	---	---	--

Ordering Example

CAT40 - CTZ 1000 A - 135
 Shank size I.D. (d) Projection length (L)

Spanner
P.069

Min. chucking length

Direct Chucking (without MC Collet)

Model	Min. chucking length
CTZ1000A, CTZ1250A	50mm

With MC Collet

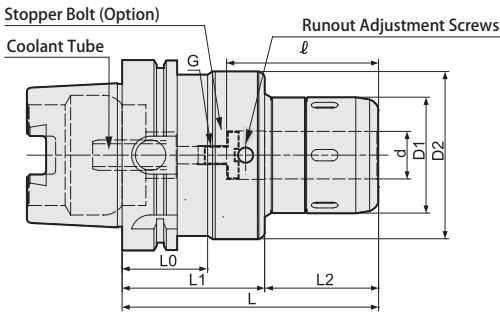
Collet I.D.	Min. chucking length	
	MC	MC-C, MC-OH
1/4, 5/16	30mm	30mm
3/8, 1/2	40mm	40mm
5/8, 3/4, 7/8	45mm	45mm
1	50mm	50mm

CTZ

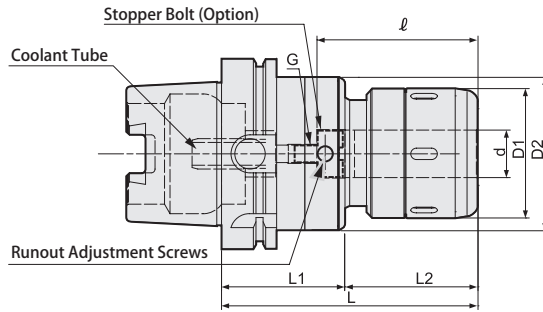
"R"Zero Holder for Large Diameter

- Runout of the cutting edge can be adjusted as close as to zero. Suitable for large diameter reaming.

Type1



Type2



Caution

Please rotate the clamping ring counterclockwise more than 360 degrees after a cutting tool is removed.

- Coolant tube is included.

Metric Sizes

Unit : Metric

Code	Model	Type	d	L	L1	L2	D1	D2	L0	ℓ	G	Spanner	Wrench
589015125135	HSK63A -CTZ25A -135 * 1	1	25	135	71	64	61	74	42	80	M8 P=1.25	HS-2.5-25	L-6L (Included)
589015125150	-150 * 1	1	25	150	71	79	61	74	42	80	M8 P=1.25		
589015132135	HSK63A -CTZ32A -135 * 1	1	32	135	71	64	68	80	42	105	M8 P=1.25	HS-3-32	
589015132150	-150 * 1	1	32	150	71	79	68	80	42	120	M8 P=1.25		
589017125135	HSK100A -CTZ25A -135	2	25	135	65	70	61	74	-	80	M10 P=1.5	HS-2.5-25	
589017125150	-150	2	25	150	65	85	61	74	-	80	M10 P=1.5		
589017132135	HSK100A -CTZ32A -135 * 1	2	32	135	65	70	68	80	-	100	M10 P=1.5	HS-3-32	
589017132150	-150 * 1	2	32	150	65	85	68	80	-	115	M10 P=1.5		
589017042135	HSK100A -CTZ42 -135 * 2	1	42	135	76	59	88	99	45	100	M10 P=1.5	HS-4-42	
589017042150	-150 * 2	1	42	150	76	74	88	99	45	110	M10 P=1.5		

- When ordering, indicate number of spanners required. "No charge" spanners are limited to number of holders on order.
 - A wrench is included.
 - The model with "*1" and "*2" are not compatible with some accessories.
- For more information about the accessories, please refer below chart.

Ordering Example

HSK63A - CTZ 32 A - 135
 Shank size I.D. (d) Projection length (L)

Spanner

P. 069



Accessories

Models with * 1 - * 2 cannot be used with some accessories due to short ℓ length.

	Stopper Bolt	Straight Collet		Morse Taper Adapter		Jacobs Adapter	
	BL (P.295)	MC (P.066)	MCA (P.067)	MA (P.068)	MAB (P.068)	JA (P.069)	JAB (P.069)
* 1	Yes	Yes	No	Yes	Yes	Yes	Yes
* 2	Yes	Yes	No	No	No	No	No

Min. chucking length

Direct Chucking (without MC Collet)

I.D. of Chuck	Min. chucking length
25,32,42	50

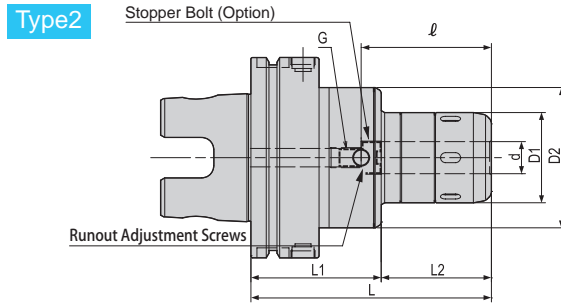
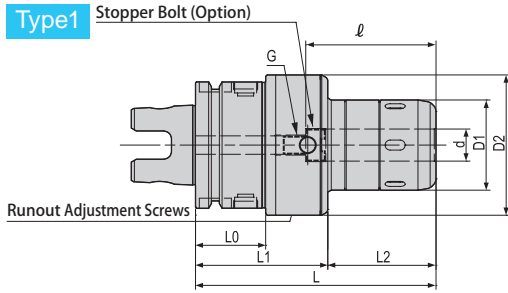
With MC Collet

Collet I.D.	Min. chucking length	
	MC	MC-C, MC-OH
6,8	30	30
10,12	40	40
16,20	45	45
25	50	50
32	50	60

CTZ

"R"Zero Holder for Large Diameter

● Runout of the cutting edge can be adjusted as close as to zero. Suitable for large diameter reaming.



Caution

Please rotate the clamping ring counterclockwise more than 360 degrees after a cutting tool is removed.

Metric Sizes

Unit : Metric

Code	Model	Type	d	L	L1	L2	D1	D2	L0	ℓ	G P=1.0	Spanner	Wrench
17301 ※ 225135	UTS6350 -CTZ25A-135	1	25	135	64	71	61	74	35	80	10	HS-2.5-25	L-6L (Included)
17301 ※ 225150	-150	1	25	150	64	86	61	74	35	80	10		
17301 ※ 232135	UTS6350 -CTZ32A-135 * 1	1	32	135	64	71	68	80	35	105	10	HS-3-32	
17301 ※ 232150	-150 * 1	1	32	150	64	86	68	80	35	120	10		
17301 ※ 325135	UTS10080 -CTZ25A-135	2	25	135	64	71	61	74	—	80	10	HS-2.5-25	
17301 ※ 325150	-150	2	25	150	64	86	61	74	—	80	10		
17301 ※ 332135	UTS10080 -CTZ32A-135 * 1	2	32	135	64	71	68	80	—	100	10	HS-3-32	
17301 ※ 332150	-150 * 1	2	32	150	64	86	68	80	—	115	10		
17300 ※ 342135	UTS10080 -CTZ42 -135 * 2	2	42	135	65	70	88	99	—	100	10	HS-4-42	
17300 ※ 342150	-150 * 2	2	42	150	65	85	88	99	—	110	10		

When placing an order, please specify high or low pressure. For high pressure type, please add (–H) on end of the description.

1. When ordering, indicate number of spanners required. "No charge" spanners are limited to number of holders on order.

2. A wrench is included.

3. For high pressure type, please add "H" after the model name.

4. The model with " * 1" and " * 2" are not compatible with some accessories.

For more information about the accessories, please refer below chart.

Spanner

P. 069



Accessories

Models with * 1 - * 2 cannot be used with some accessories due to short ℓ length.

	Stopper Bolt	Straight Collet		Morse Taper Adapter		Jacobs Adapter	
	BL (P.389)	MC (P.066)	MCA (P.067)	MA (P.068)	MAB (P.068)	JA (P.069)	JAB (P.069)
* 1	BL16 only	Yes	No	Yes	Yes	Yes	Yes
* 2	BL16 only	Yes	No	No	No	No	No

Ordering Example

Low pressure type

0 ~ 1.0MPa (UTS10080 : 0 ~ 2.0MPa)

UTS6350 - CTZ 32 A - 135

Shank size

I.D. (d)

Projection length (L)

Ordering Example

High pressure type

1.1 ~ 7.0MPa (UTS10080 : 2.1 ~ 7.0MPa)

UTS6350 - CTZ 32 A - 135 - H

Shank size

I.D. (d)

Projection length (L)

High pressure type

Min. chucking length

Direct Chucking (without MC Collet)

I.D. of Chuck	Min. chucking length
25,32,42	50

With MC Collet

Collet I.D.	Min. chucking length	
	MC	MC-C, MC-OH
6,8	30	30
10,12	40	40
16,20	45	45
25	50	50
32	50	60