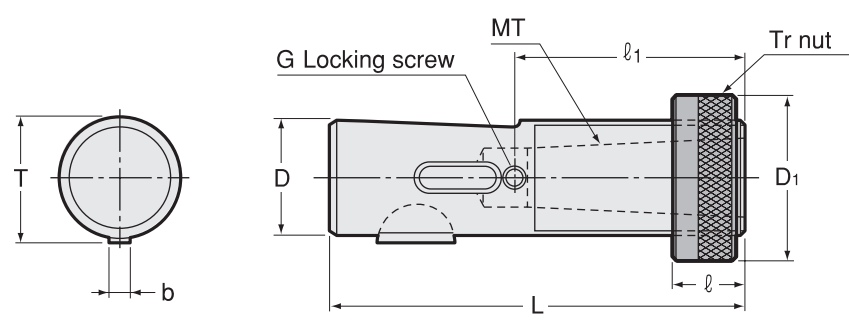


H, M

Adjustable Adapter "H" And "M" Series

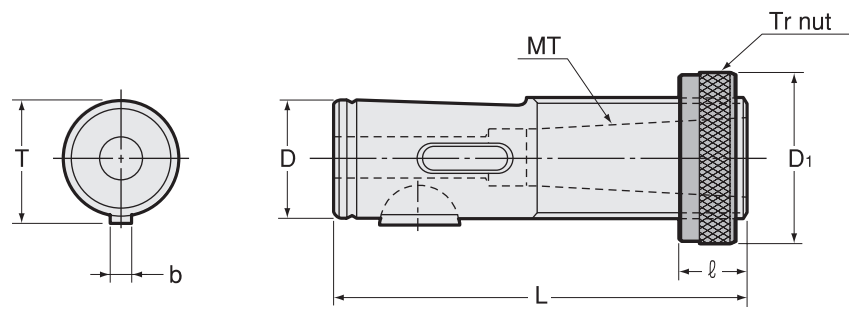
- BT
- CAT
- AHO
- HSK-A/E/F/C
- HSK-T
- UTS
- Specialized Machine
- Related Equipment
- Bush & Chamfering Drill

H Series



Code	Model	MT	D	D1 ± 0.2	L	b	T	l	l1	G	kg
0610 04111810	H -11810 /Tr18H	1	18	32	102	4	19.5	12 ~ 52	48	M6 P=1	0.17
0610 04111811	-11811 /Tr18H	1	18	32	112	4	19.5	12 ~ 62	48	M6 P=1	0.19
0610 04111812	-11812 /Tr18H	1	18	32	122	4	19.5	12 ~ 72	48	M6 P=1	0.21
0610 04111813	-11813 /Tr18H	1	18	32	132	4	19.5	12 ~ 82	48	M6 P=1	
0610 04111814	-11814 /Tr18H	1	18	32	142	4	19.5	12 ~ 92	48	M6 P=1	
0610 04112610	H -12610 /Tr26H	1	26	40	102	5	27.5	12 ~ 52	48	M6 P=1	0.40
0610 04112611	-12611 /Tr26H	1	26	40	112	5	27.5	12 ~ 62	48	M6 P=1	
0610 04112612	-12612 /Tr26H	1	26	40	122	5	27.5	12 ~ 72	48	M6 P=1	
0610 04112613	-12613 /Tr26H	1	26	40	132	5	27.5	12 ~ 82	48	M6 P=1	0.51
0610 04112614	-12614 /Tr26H	1	26	40	142	5	27.5	12 ~ 92	48	M6 P=1	
0610 04122610	H -22610 /Tr26H	2	26	40	102	5	27.5	12 ~ 52	56.3	M6 P=1	
0610 04122611	-22611 /Tr26H	2	26	40	112	5	27.5	12 ~ 62	56.3	M6 P=1	0.35
0610 04122612	-22612 /Tr26H	2	26	40	122	5	27.5	12 ~ 72	56.3	M6 P=1	0.39
0610 04122613	-22613 /Tr26H	2	26	40	132	5	27.5	12 ~ 82	56.3	M6 P=1	0.43
0610 04122614	-22614 /Tr26H	2	26	40	142	5	27.5	12 ~ 92	56.3	M6 P=1	

M Series



Code	Model	MT	D	D1 ± 0.2	L	b	T	l	kg
0610 14300161	M1 -16x1 /Tr16	1	16	25	78	4	17.5	12 ~ 38	0.08
0610 14300201	M1 -20x1 /Tr20	1	20	32	78	5	22	12 ~ 38	0.17
0610 14300261	M1 -26x1 /Tr26	1	26	40	94	5	28	12 ~ 43	0.36
0610 14300262	-26x2 /Tr26	2	26	40	94	5	28	12 ~ 43	0.29
0610 14300281	M1 -28x1 /Tr28	1	28	40	94	5	30	12 ~ 43	0.41
0610 14300282	-28x2 /Tr28	2	28	40	94	5	30	12 ~ 43	0.34
0610 14300322	M1 -32x2 /Tr32	2	32	45	117	6	34.4	14 ~ 47	0.63
0610 14300323	-32x3 /Tr32	3	32	45	117	6	34.4	14 ~ 47	0.48

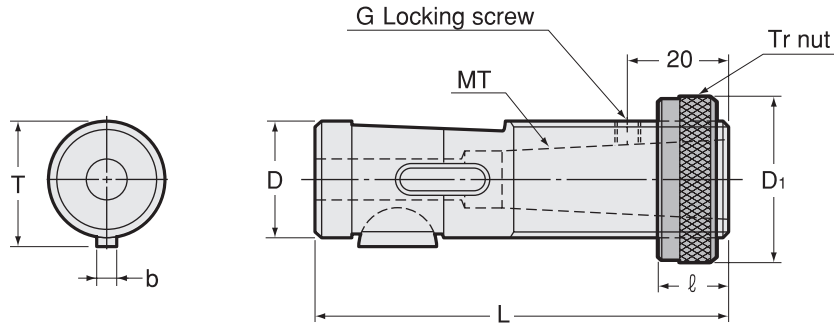
Ordering Example

M1 - 16 × 1 / Tr16
 D MT1 Tr nut

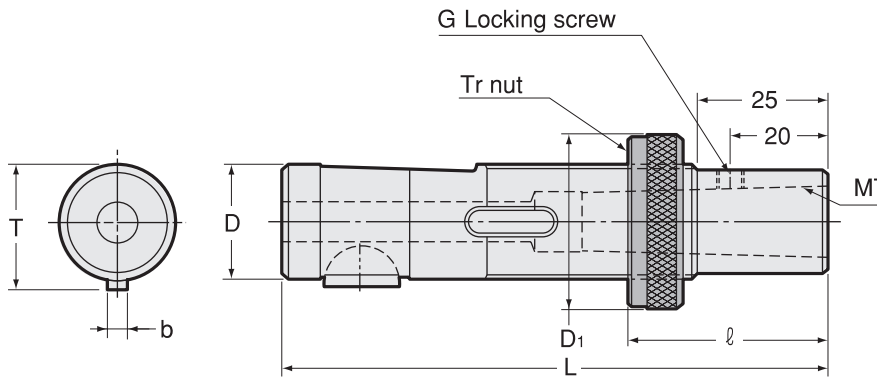
N

Adjustable Adapter "N" Series

N Series



Code	Model	MT	D	D1 ± 0.2	L	b	T 0 -0.2	l	G	kg
0610 02111611	N -1161 /Tr16N	1	16	25	85	4	17.5	12 ~ 37	M5 P=0.8	0.09
0610 02112011	N -1201 /Tr20N	1	20	32	85	5	22	12 ~ 37	M5 P=0.8	
0610 02112411	N -1241 /Tr24N	1	24	37	85	5	26	12 ~ 37	M5 P=0.8	0.27
0610 02112611	N -1261 /Tr26N	1	26	40	96	7	28.6	12 ~ 43	M6 P=1.0	
0610 02112621	-1262 /Tr26N	2	26	40	96	7	28.6	12 ~ 43	M6 P=1.0	0.30
0610 02113021	N -1302 /Tr30N	2	30	45	100	7	32.6	14 ~ 46	M6 P=1.0	0.47
0610 02113621	N -1362 /Tr36N	2	36	50	118	10	39.2	14 ~ 54	M6 P=1.0	0.84
0610 02113631	-1363 /Tr36N	3	36	50	118	10	39.2	14 ~ 54	M6 P=1.0	0.69
0610 02114831	N -1483 /Tr48N	3	48	67	142	12	51.2	18 ~ 64	M6 P=1.0	1.82
0610 02114841	-1484 /Tr48N	4	48	67	142	12	51.2	18 ~ 64	M6 P=1.0	



Code	Model	MT	D	D1 ± 0.2	L	b	T 0 -0.2	l	G	kg
0610 02121611	N -2161 /Tr16N	1	16	25	110	4	17.5	38 ~ 62	M5 P=0.8	0.12
0610 02122011	N -2201 /Tr20N	1	20	32	110	5	22	38 ~ 62	M5 P=0.8	
0610 02122411	N -2241 /Tr24N	1	24	37	110	5	26	38 ~ 62	M5 P=0.8	
0610 02122611	N -2261 /Tr26N	1	26	40	121	7	28.6	38 ~ 68	M6 P=1.0	
0610 02122621	-2262 /Tr26N	2	26	40	121	7	28.6	38 ~ 68	M6 P=1.0	
0610 02123021	N -2302 /Tr30N	2	30	45	125	7	32.6	40 ~ 71	M6 P=1.0	
0610 02123621	N -2362 /Tr36N	2	36	50	143	10	39.2	40 ~ 79	M6 P=1.0	1.00
0610 02123631	-2363 /Tr36N	3	36	50	143	10	39.2	40 ~ 79	M6 P=1.0	0.84
0610 02124831	N -2483 /Tr48N	3	48	67	167	12	51.2	44 ~ 89	M6 P=1.0	
0610 02124841	-2484 /Tr48N	4	48	67	167	12	51.2	44 ~ 89	M6 P=1.0	

Ordering Example

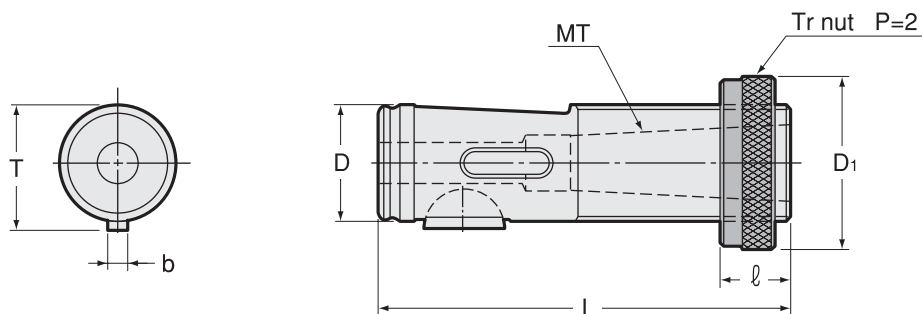
N-2161 / Tr16N
Tr nut

T

Adjustable Adapter "T" Series

BT
CAT
AHO
HSK-A/E/F/C
HSK-T
UTS
Specialized Machine
Related Equipment
Bush & Chamfering Drill

T Series



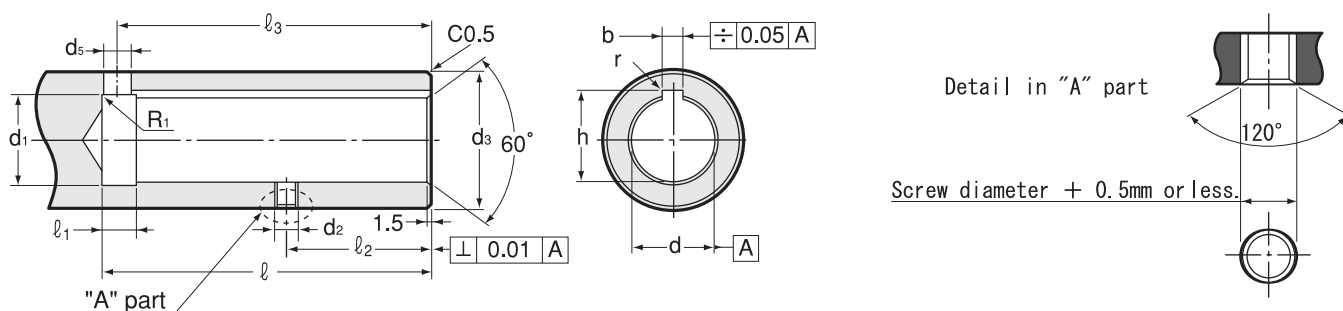
Code	Model	MT	D	D1 ±0.2	L	b	T 0 -0.2	l	kg
0610 03100116	T -1×16 /Tr16×2	1	16	25	80	3	17	12 ~ 35	0.08
0610 03100119	T -1×19 /Tr19	1	19	32	80	5	21	12 ~ 35	0.15
0610 03100122	T -1×22 /Tr22	1	22	32	92	5	24	12 ~ 40	0.23
0610 03100222	-2×22 /Tr22	2	22	32	92	5	24	12 ~ 40	0.15
0610 03100126	T -1×26 /Tr26	1	26	40	102	5	28	12 ~ 45	0.39
0610 03100226	-2×26 /Tr26	2	26	40	102	5	28	12 ~ 45	0.31
0610 03100335	T -3×35 /Tr35	3	35	50	122	7	38	14 ~ 52	0.66
0610 03100448	T -4×48 /Tr48	4	48	67	152	7	51	18 ~ 62	

Ordering Example

T - 1 × 16 / Tr16×2
 MT1 D Tr nut

Sub Holder
Tapping Chuck
Tap Adapter
Adjustable Adapter
Endmill Chuck
Straight Drill Chuck
Floating Holder

Spindle Dimensions



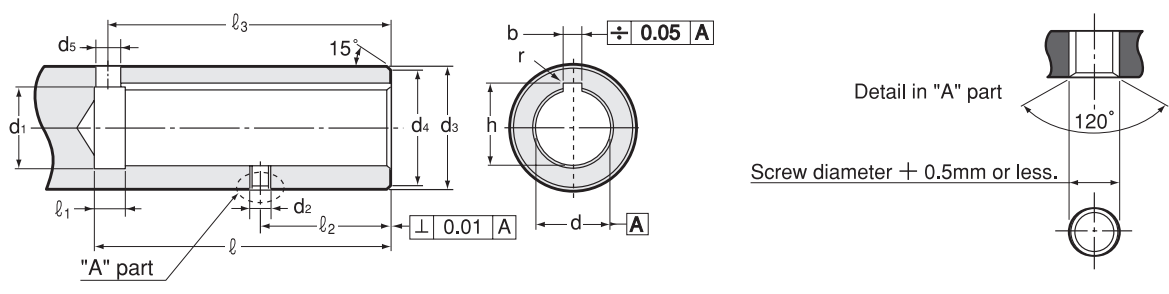
Chamfer 120° at "A" part. (Max. chamfering diameter = Screw diameter + 0.5 mm or less)

N Series

Size	d _{H6}	ℓ (min)	d1	d2	d3 _{g6}	d5	ℓ1	ℓ2 ± 0.1	ℓ3	b	h _{+0.1/0}	r
16	16	81	17	M8 P=1.25	28	8	12	32	75	4 ^{+0.078} _{+0.030}	17.7	0.2
20	20	81	21	M8 P=1.25	32	8	12	32	75	5 ^{+0.078} _{+0.030}	22.5	0.2
24	24	81	25	M8 P=1.25	36	8	12	32	75	5 ^{+0.078} _{+0.030}	26.5	0.2
24	24	81	25	M8 P=1.25	38	8	12	32	75	5 ^{+0.078} _{+0.030}	26.5	0.2
26	26	92	27	M10 P=1.5	42	10	12	38	83	7 ^{+0.098} _{+0.040}	29.5	0.4
30	30	96	31	M10 P=1.5	50	10	12	42	87	7 ^{+0.098} _{+0.040}	33.5	0.4
36	36	114	37	M10 P=1.5	60	12	12	50	108	10 ^{+0.098} _{+0.040}	40	0.4
48	48	135	49	M10 P=1.5	75	14	12	57	126	12 ^{+0.120} _{+0.050}	52	0.4

H Series

Size	d _{H6}	ℓ (min)	d1	d2	d3 _{g6}	d4	d5	ℓ1	ℓ2 ± 0.1	ℓ3	b	h _{+0.1/0}	r
18	18	92	18.6	M6 P=1.0	26	25	5	8	46	88	4 ^{+0.145} _{+0.070}	19.7	0.2
26	26	92	26.6	M6 P=1.0	35	34.5	6	10	46	87	5 ^{+0.145} _{+0.070}	27.7	0.2



Chamfer 120° at "A" part. (Max. chamfering diameter = Screw diameter + 0.5 mm or less)

M Series

Size	d H6	ℓ (min)	d1	d2	d3 g6	d4	d5	ℓ 1	ℓ 2 ±0.1	ℓ 3	b	h +0.1 0	r
16	16	68	16.6	M6 P=1.0	25	24	5	8	34	64	4 +0.145 +0.070	17.7	0.2
20	20	68	20.6	M8 P=1.25	32	31	6	8	34	64	5 +0.145 +0.070	22.2	0.2
26	26	84	26.6	M8 P=1.25	40	39	6	10	41	79	5 +0.145 +0.070	28.2	0.2
28	28	84	28.6	M8 P=1.25	40	39	6	10	41	79	5 +0.145 +0.070	30.2	0.2
32	32	105	32.8	M10 P=1.5	45	44	8	10	45	100	6 +0.145 +0.070	34.6	0.2

T Series

Size	d	ℓ (min)	d1	d2	d3 h7	d4	d5	ℓ 1	ℓ 2 ±0.1	ℓ 3	b	h +0.3 +0.1
16	16 +0.027 +0.015	75	17	M6 P=0.75	25	24	4	10	31.3	66	3 +0.27 +0.19	17.5
19	19 +0.027 +0.015	75	20	M8 P=0.75	32	31	6	10	31.3	67	5 +0.28 +0.20	21.5
22	22 +0.032 +0.018	88	23	M8 P=0.75	36	35	6	10	36.3	80	5 +0.28 +0.20	24.5
26	26 +0.032 +0.018	98	28	M8 P=0.75	40	39	6	10	41.3	90	5 +0.28 +0.20	28.5
35	35 +0.038 +0.021	116	37	M8 P=0.75	52	51	8	10	46.3	106	7 +0.29 +0.21	38.5
48	48 +0.038 +0.021	147	50	M8 P=0.75	65	64	8	10	62.3	136	7 +0.29 +0.21	51.5

BT

CAT

AHO

HSK-A/E/F/C

HSK-T

UTS

Specialized Machine

Related Equipment

Bush & Chamfering Drill

Sub Holder

Tap Adapter

Drilling Chuck

Tap Adapter

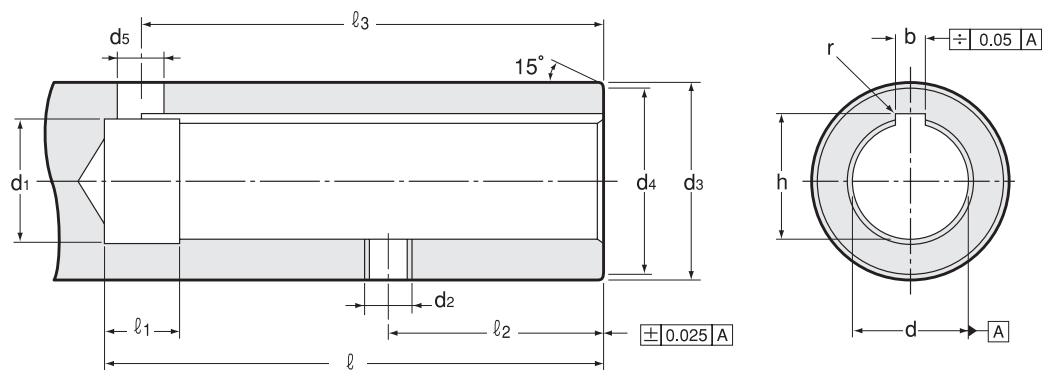
Adjustable Adapter

Endmill Chuck

Straight Drill Chuck

Floating Holder

DIN Spindle Dimension



Size	d H6	ℓ (min)	d1	d2	d3 g6	d4	d5	ℓ 1	ℓ 2 ±0.1	ℓ 3	b +0.120 +0.060	h +0.1 0	r
8	8	42	8.6	M4	15	14.4	3.5	8	16	35	2	9	0.2
10	10	52	10.6	M5	18	17.4	5	8	22	48	3	11	0.2
12	12	52	12.6	M5	20	19.2	5	8	22	48	3	13	0.2
16	16	74	16.6	M6	25	24	6	8	34	70	5	17.3	0.2
20	20	77	20.6	M8	32	31	6	8	34	73	5	21.3	0.2
25	25	85	25.6	M8	37	36	8	10	38	80	6	26.7	0.4
26	26	85	26.6	M8	40	39	6	10	38	80	5	27.7	0.2
28	28	85	28.6	M8	40	39	8	10	38	80	6	29.7	0.4
32	32	106	32.8	M8	45	44	10	10	45	101	8	33.7	0.4
35	35	106	35.8	M8	50	49	8	10	45	101	6	36.7	0.4
36	36	106	36.8	M8	50	49	10	10	45	101	8	37.7	0.4
48	48	129	48.8	M10	67	66	12	12	57	123	10	50.1	0.4