

D

Adjustable Adapter Short Design Type D

BT
CAT
AHO
HSK-A/E/F/C
HSK-T
UTS
Specialized Machine
Related Equipment
Bush & Chamfering Drill

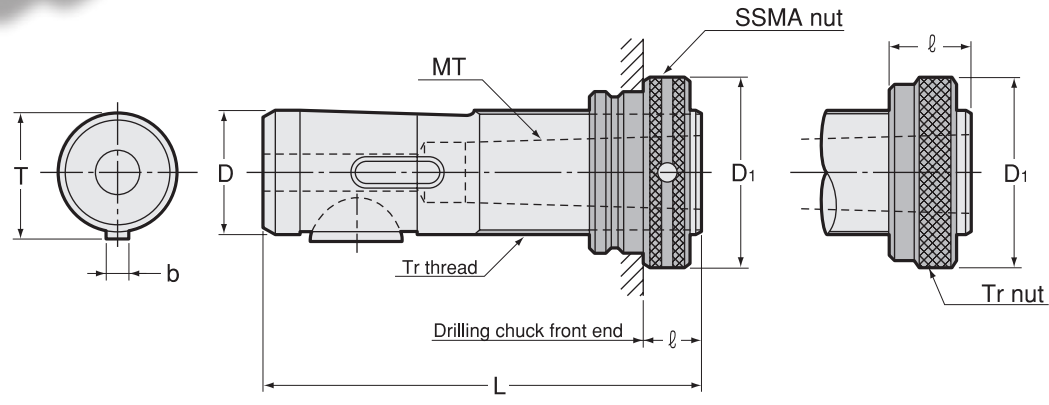
Sub Holder
Tapping Chuck
Tap Adapter

Adjustable Adapter
Endmill Chuck
Straight Drill Chuck
Floating Holder



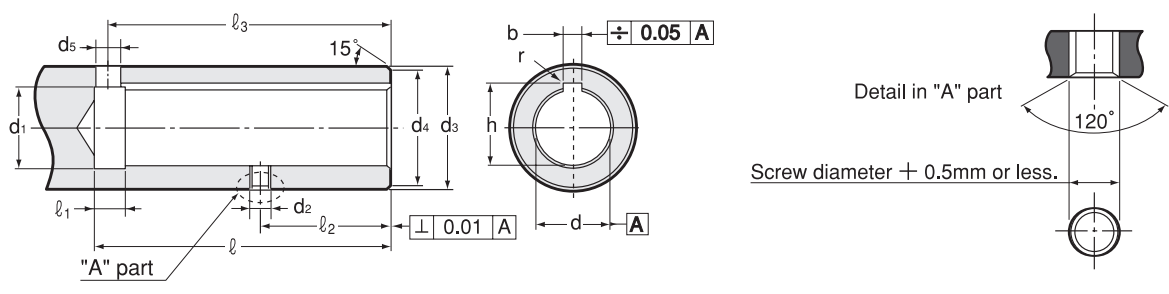
Applications
Drilling and spot-facing.

Feature
1. Both Tr and SSMA nut types are available in many sizes.
2. SSMA nut type is suitable for use with drilling chuck.



Model	MT	D	D1 ± 0.2		L	b	T	kg		ℓ		
			SSMA	Tr				SSMA	Tr	SSMA	Tr	
D16 -1 /SSMA16 /Tr16	1	16	26	25	85	5	17.1	0.10	0.09	9 ~ 37	12 ~ 38	
D20 -1 /SSMA20 /Tr20	1	20	33	32	88	5	21.1	0.19	0.18	9 ~ 37	12 ~ 38	
D25 -1 /SSMA25	1	25	40	37	95	6	26.5	0.36	0.33	10 ~ 40	12 ~ 42	
	-2 /Tr25											2
D26 -1 /Tr26	1	26	—	40	95	5	27.5	—	0.37	—	12 ~ 42	
	-2											2
D28 -1 /SSMA28	1	28	42	40	95	6	29.5	0.45	0.42	10 ~ 40	12 ~ 42	
	-2 /Tr28											2
D32 -2 /SSMA32	2	32	47	45	118	8	33.5	0.65	0.63	10 ~ 46	14 ~ 48	
	-3 /Tr32											3
	-1											1
D35 -2 /Tr35	2	35	—	50	118	6	36.5	—	0.88	—	14 ~ 48	
	-3											3
	-1											1
D36 -2 /SSMA36	2	36	54	50	118	8	37.5	0.88	0.83	10 ~ 46	14 ~ 48	
	-3 /Tr36											3
D48 -2 /SSMA48 /Tr48	2	48	72	67	144	10	49.9	2.13	2.01	14 ~ 61	18 ~ 63	
	-3											3
	-4											4
	-3-8											3
	-4-8											4
	-1											1

Ordering Example
D 20 - 1 / SSMA20
 D MT1 SSMA nut



Chamfer 120° at "A" part. (Max. chamfering diameter = Screw diameter + 0.5 mm or less)

M Series

Size	d H6	ℓ (min)	d1	d2	d3 g6	d4	d5	ℓ 1	ℓ 2 ± 0.1	ℓ 3	b	h +0.1 0	r
16	16	68	16.6	M6 P=1.0	25	24	5	8	34	64	4 ^{+0.145 +0.070}	17.7	0.2
20	20	68	20.6	M8 P=1.25	32	31	6	8	34	64	5 ^{+0.145 +0.070}	22.2	0.2
26	26	84	26.6	M8 P=1.25	40	39	6	10	41	79	5 ^{+0.145 +0.070}	28.2	0.2
28	28	84	28.6	M8 P=1.25	40	39	6	10	41	79	5 ^{+0.145 +0.070}	30.2	0.2
32	32	105	32.8	M10 P=1.5	45	44	8	10	45	100	6 ^{+0.145 +0.070}	34.6	0.2

T Series

Size	d	ℓ (min)	d1	d2	d3 h7	d4	d5	ℓ 1	ℓ 2 ± 0.1	ℓ 3	b	h +0.3 +0.1
16	16 ^{+0.027 +0.015}	75	17	M6 P=0.75	25	24	4	10	31.3	66	3 ^{+0.27 +0.19}	17.5
19	19 ^{+0.027 +0.015}	75	20	M8 P=0.75	32	31	6	10	31.3	67	5 ^{+0.28 +0.20}	21.5
22	22 ^{+0.032 +0.018}	88	23	M8 P=0.75	36	35	6	10	36.3	80	5 ^{+0.28 +0.20}	24.5
26	26 ^{+0.032 +0.018}	98	28	M8 P=0.75	40	39	6	10	41.3	90	5 ^{+0.28 +0.20}	28.5
35	35 ^{+0.038 +0.021}	116	37	M8 P=0.75	52	51	8	10	46.3	106	7 ^{+0.29 +0.21}	38.5
48	48 ^{+0.038 +0.021}	147	50	M8 P=0.75	65	64	8	10	62.3	136	7 ^{+0.29 +0.21}	51.5

BT

CAT

AHO

HSK-A/E/F/C

HSK-T

UTS

Specialized Machine

Related Equipment

Bush & Chamfering Drill

Sub Holder

Tapping Chuck

Tap Adapter

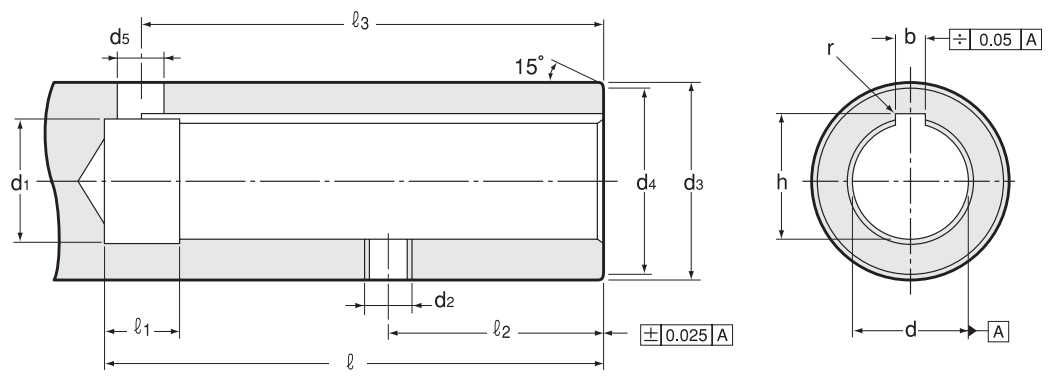
Adjustable Adapter

Endmill Chuck

Straight Drill Chuck

Floating Holder

DIN Spindle Dimension



Size	d H6	ℓ (min)	d1	d2	d3 g6	d4	d5	ℓ 1	ℓ 2 ± 0.1	ℓ 3	b +0.120 +0.060	h +0.1 0	r
8	8	42	8.6	M4	15	14.4	3.5	8	16	35	2	9	0.2
10	10	52	10.6	M5	18	17.4	5	8	22	48	3	11	0.2
12	12	52	12.6	M5	20	19.2	5	8	22	48	3	13	0.2
16	16	74	16.6	M6	25	24	6	8	34	70	5	17.3	0.2
20	20	77	20.6	M8	32	31	6	8	34	73	5	21.3	0.2
25	25	85	25.6	M8	37	36	8	10	38	80	6	26.7	0.4
26	26	85	26.6	M8	40	39	6	10	38	80	5	27.7	0.2
28	28	85	28.6	M8	40	39	8	10	38	80	6	29.7	0.4
32	32	106	32.8	M8	45	44	10	10	45	101	8	33.7	0.4
35	35	106	35.8	M8	50	49	8	10	45	101	6	36.7	0.4
36	36	106	36.8	M8	50	49	10	10	45	101	8	37.7	0.4
48	48	129	48.8	M10	67	66	12	12	57	123	10	50.1	0.4