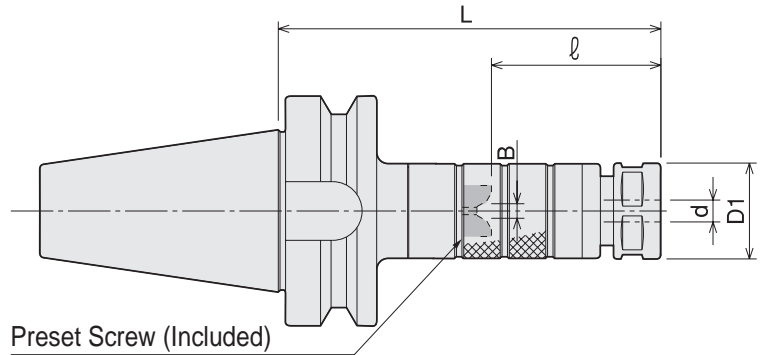


SDM

Drill Holder With Easy Tool Length Adjustment

- Projection length of the cutting tool can be adjusted by simply turning circumference of the holder.



Unit : Metric

Code	Model	d	L	l	B	D1	Nut	Collet	Spanner
3920 00107075	BT30 -SDM07 -75	0.5 ~ 7.0	75	29 ~ 39	0 ~ 4	23	HDP-07A	FDC-07	S-0
3920 00107090	-90	0.5 ~ 7.0	90	29 ~ 54	0 ~ 4	23	HDP-07A		
3920 00107105	-105	0.5 ~ 7.0	105	29 ~ 54	0 ~ 4	23	HDP-07A		
3920 00107120	-120	0.5 ~ 7.0	120	29 ~ 54	0 ~ 4	23	HDP-07A		
3920 00107135	-135	0.5 ~ 7.0	135	29 ~ 54	0 ~ 4	23	HDP-07A		
3920 00107150	-150	0.5 ~ 7.0	150	29 ~ 54	0 ~ 4	23	HDP-07A		
3920 00109090	BT30 -SDM09 -90	2.5 ~ 9.0	90	28 ~ 38	0 ~ 4	26	HDP-09	FDC-09	S-1L
3920 00109105	-105	2.5 ~ 9.0	105	28 ~ 53	0 ~ 4	26	HDP-09		
3920 00109120	-120	2.5 ~ 9.0	120	28 ~ 53	0 ~ 4	26	HDP-09		
3920 00109135	-135	2.5 ~ 9.0	135	28 ~ 53	0 ~ 4	26	HDP-09		
3920 00109150	-150	2.5 ~ 9.0	150	28 ~ 53	0 ~ 4	26	HDP-09		
3920 00109165	-165	2.5 ~ 9.0	165	28 ~ 53	0 ~ 4	26	HDP-09		
3920 00112090	BT30 -SDM12 -90	2.5 ~ 12.0	90	34 ~ 44	0 ~ 5	32	HDP-12	FDC-12	S-3L
3920 00112105	-105	2.5 ~ 12.0	105	34 ~ 59	0 ~ 5	32	HDP-12		
3920 00112120	-120	2.5 ~ 12.0	120	34 ~ 59	0 ~ 5	32	HDP-12		
3920 00112135	-135	2.5 ~ 12.0	135	34 ~ 59	0 ~ 5	32	HDP-12		
3920 00112150	-150	2.5 ~ 12.0	150	34 ~ 59	0 ~ 5	32	HDP-12		
3920 00112165	-165	2.5 ~ 12.0	165	34 ~ 59	0 ~ 5	32	HDP-12		
3920 00116105	BT30 -SDM16 -105	3.5 ~ 16.0	105	40 ~ 50	0 ~ 6	36	HDP-16	FDC-16	S-4L
3920 00116120	-120	3.5 ~ 16.0	120	40 ~ 65	0 ~ 6	36	HDP-16		
3920 00116135	-135	3.5 ~ 16.0	135	40 ~ 65	0 ~ 6	36	HDP-16		
3920 00116150	-150	3.5 ~ 16.0	150	40 ~ 65	0 ~ 6	36	HDP-16		
3920 00116165	-165	3.5 ~ 16.0	165	40 ~ 65	0 ~ 6	36	HDP-16		
3920 00122105	BT30 -SDM22 -105	3.5 ~ 22.0	105	48 ~ 58	0 ~ 8	46	HDP-22		
3920 00122120	-120	3.5 ~ 22.0	120	48 ~ 73	0 ~ 8	46	HDP-22		
3920 00122135	-135	3.5 ~ 22.0	135	48 ~ 73	0 ~ 8	46	HDP-22		
3920 00122150	-150	3.5 ~ 22.0	150	48 ~ 73	0 ~ 8	46	HDP-22		
3920 00122165	-165	3.5 ~ 22.0	165	48 ~ 73	0 ~ 8	46	HDP-22		
3920 00307090	BT40 -SDM07 -90	0.5 ~ 7.0	90	29 ~ 39	0 ~ 4	23	HDP-07A	FDC-07	S-0
3920 00307105	-105	0.5 ~ 7.0	105	29 ~ 54	0 ~ 4	23	HDP-07A		
3920 00307120	-120	0.5 ~ 7.0	120	29 ~ 54	0 ~ 4	23	HDP-07A		
3920 00307135	-135	0.5 ~ 7.0	135	29 ~ 54	0 ~ 4	23	HDP-07A		
3920 00307150	-150	0.5 ~ 7.0	150	29 ~ 54	0 ~ 4	23	HDP-07A		
3920 00309090	BT40 -SDM09 -90	2.5 ~ 9.0	90	28 ~ 38	0 ~ 4	26	HDP-09		
3920 00309105	-105	2.5 ~ 9.0	105	28 ~ 53	0 ~ 4	26	HDP-09		
3920 00309120	-120	2.5 ~ 9.0	120	28 ~ 53	0 ~ 4	26	HDP-09		
3920 00309135	-135	2.5 ~ 9.0	135	28 ~ 53	0 ~ 4	26	HDP-09		
3920 00309150	-150	2.5 ~ 9.0	150	28 ~ 53	0 ~ 4	26	HDP-09		
3920 00309180	-180	2.5 ~ 9.0	180	28 ~ 53	0 ~ 4	26	HDP-09		

Code	Model	d	L	ℓ	B	D1	Nut	Collet	Spanner
3920 00312090	BT40 -SDM12 -90	2.5 ~ 12.0	90	34 ~ 44	0 ~ 5	32	HDP-12	FDC-12	S-3L
3920 00312105	-105	2.5 ~ 12.0	105	34 ~ 59	0 ~ 5	32	HDP-12		
3920 00312120	-120	2.5 ~ 12.0	120	34 ~ 59	0 ~ 5	32	HDP-12		
3920 00312135	-135	2.5 ~ 12.0	135	34 ~ 59	0 ~ 5	32	HDP-12		
3920 00312150	-150	2.5 ~ 12.0	150	34 ~ 59	0 ~ 5	32	HDP-12		
3920 00312180	-180	2.5 ~ 12.0	180	34 ~ 59	0 ~ 5	32	HDP-12		
3920 00316105	BT40 -SDM16 -105	3.5 ~ 16.0	105	40 ~ 50	0 ~ 6	36	HDP-16	FDC-16	S-4L
3920 00316120	-120	3.5 ~ 16.0	120	40 ~ 65	0 ~ 6	36	HDP-16		
3920 00316135	-135	3.5 ~ 16.0	135	40 ~ 65	0 ~ 6	36	HDP-16		
3920 00316150	-150	3.5 ~ 16.0	150	40 ~ 65	0 ~ 6	36	HDP-16		
3920 00316180	-180	3.5 ~ 16.0	180	40 ~ 65	0 ~ 6	36	HDP-16		
3920 00322120	BT40 -SDM22 -120	3.5 ~ 22.0	120	48 ~ 58	0 ~ 8	46	HDP-22		
3920 00322135	-135	3.5 ~ 22.0	135	48 ~ 73	0 ~ 8	46	HDP-22		
3920 00322150	-150	3.5 ~ 22.0	150	48 ~ 73	0 ~ 8	46	HDP-22		
3920 00322180	-180	3.5 ~ 22.0	180	48 ~ 73	0 ~ 8	46	HDP-22		
3920 00507090	BT50 -SDM07 -90	0.5 ~ 7.0	90	29 ~ 39	0 ~ 4	23	HDP-07A	FDC-07	S-0
3920 00507105	-105	0.5 ~ 7.0	105	29 ~ 54	0 ~ 4	23	HDP-07A		
3920 00507120	-120	0.5 ~ 7.0	120	29 ~ 54	0 ~ 4	23	HDP-07A		
3920 00507135	-135	0.5 ~ 7.0	135	29 ~ 54	0 ~ 4	23	HDP-07A		
3920 00507150	-150	0.5 ~ 7.0	150	29 ~ 54	0 ~ 4	23	HDP-07A		
3920 00507165	-165	0.5 ~ 7.0	165	29 ~ 54	0 ~ 4	23	HDP-07A		
3920 00509090	BT50 -SDM09 -90	2.5 ~ 9.0	90	28 ~ 38	0 ~ 4	26	HDP-09	FDC-09	S-1L
3920 00509105	-105	2.5 ~ 9.0	105	28 ~ 53	0 ~ 4	26	HDP-09		
3920 00509120	-120	2.5 ~ 9.0	120	28 ~ 53	0 ~ 4	26	HDP-09		
3920 00509135	-135	2.5 ~ 9.0	135	28 ~ 53	0 ~ 4	26	HDP-09		
3920 00509150	-150	2.5 ~ 9.0	150	28 ~ 53	0 ~ 4	26	HDP-09		
3920 00509180	-180	2.5 ~ 9.0	180	28 ~ 53	0 ~ 4	26	HDP-09		
3920 00512105	BT50 -SDM12 -105	2.5 ~ 12.0	105	34 ~ 44	0 ~ 5	32	HDP-12	FDC-12	S-3L
3920 00512120	-120	2.5 ~ 12.0	120	34 ~ 59	0 ~ 5	32	HDP-12		
3920 00512135	-135	2.5 ~ 12.0	135	34 ~ 59	0 ~ 5	32	HDP-12		
3920 00512150	-150	2.5 ~ 12.0	150	34 ~ 59	0 ~ 5	32	HDP-12		
3920 00512180	-180	2.5 ~ 12.0	180	34 ~ 59	0 ~ 5	32	HDP-12		
3920 00516105	BT50 -SDM16 -105	3.5 ~ 16.0	105	40 ~ 50	0 ~ 6	36	HDP-16		
3920 00516120	-120	3.5 ~ 16.0	120	40 ~ 65	0 ~ 6	36	HDP-16		
3920 00516135	-135	3.5 ~ 16.0	135	40 ~ 65	0 ~ 6	36	HDP-16		
3920 00516150	-150	3.5 ~ 16.0	150	40 ~ 65	0 ~ 6	36	HDP-16		
3920 00516180	-180	3.5 ~ 16.0	180	40 ~ 65	0 ~ 6	36	HDP-16		
3920 00522120	BT50 -SDM22 -120	3.5 ~ 22.0	120	48 ~ 58	0 ~ 8	46	HDP-22	FDC-22	S-5L
3920 00522135	-135	3.5 ~ 22.0	135	48 ~ 73	0 ~ 8	46	HDP-22		
3920 00522150	-150	3.5 ~ 22.0	150	48 ~ 73	0 ~ 8	46	HDP-22		
3920 00522180	-180	3.5 ~ 22.0	180	48 ~ 73	0 ~ 8	46	HDP-22		
3920 00522210	-210	3.5 ~ 22.0	210	48 ~ 73	0 ~ 8	46	HDP-22		

Collet

P. 086 - 089



Spanner

P. 095



1. Collet and spanner are sold separately.
2. ℓ is the dimension between the cap end and the preset screw top end.
3. See P.499 for standard Tightening Torque.

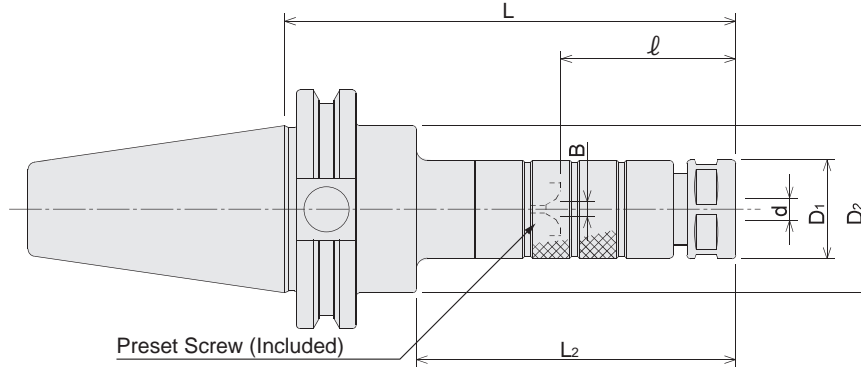
Ordering Example

BT40 - SDM 12 - 90

Shank size Max. Projection
collet I.D. collet I.D. length (L)

Drill Holder With Easy Tool Length Adjustment

- Projection length of the cutting tool can be adjusted by simply turning circumference of the holder.



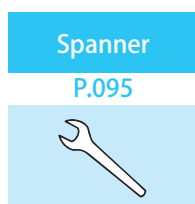
Unit : Inch

Code	Model	d (mm)	L	L ₂	l	B (mm)	D ₁	D ₂	kg	Nut	Collet	Spanner
—	CAT40 -SDM07 -90 (*1)	0.5-7.0	3.543	2.165	1.142-1.535	0-4	0.906	1.750		HDP-07A	FDC-07	S-0
1870 00407105	-105	0.5-7.0	4.134	2.756	1.142-2.126	0-4	0.906	1.750	1.1	HDP-07A		
1870 00407120	-120	0.5-7.0	4.724	3.346	1.142-2.126	0-4	0.906	1.750	1.2	HDP-07A		
1870 00407135	-135	0.5-7.0	5.315	3.937	1.142-2.126	0-4	0.906	1.750	11.9	HDP-07A		
—	-150 (*1)	0.5-7.0	5.906	4.528	1.142-2.126	0-4	0.906	1.750		HDP-07A		
—	CAT40 -SDM09 -90 (*1)	2.5-9.0	3.543	2.165	1.102-1.496	0-4	1.024	1.750		HDP-09	FDC-09	S-1L
1870 00409105	-105	2.5-9.0	4.134	2.756	1.102-2.087	0-4	1.024	1.750	1.2	HDP-09		
1870 00409120	-120	2.5-9.0	4.724	3.346	1.102-2.087	0-4	1.024	1.750	1.2	HDP-09		
1870 00409135	-135	2.5-9.0	5.315	3.937	1.102-2.087	0-4	1.024	1.750	1.3	HDP-09		
—	-150 (*1)	2.5-9.0	5.906	4.528	1.102-2.087	0-4	1.024	1.750		HDP-09		
—	-180 (*1)	2.5-9.0	7.087	5.709	1.102-2.087	0-4	1.024	1.750		HDP-09		
1870 00412105	CAT40 -SDM12 -105	2.5-12.0	4.134	2.756	1.339-2.323	0-5	1.260	1.750	1.3	HDP-12	FDC-12	S-3L
1870 00412120	-120	2.5-12.0	4.724	3.346	1.339-2.323	0-5	1.260	1.750	1.3	HDP-12		
1870 00412135	-135	2.5-12.0	5.315	3.937	1.339-2.323	0-5	1.260	1.750	1.4	HDP-12		
—	-150 (*1)	2.5-12.0	5.906	4.528	1.339-2.323	0-5	1.260	1.750		HDP-12		
—	-180 (*1)	2.5-12.0	7.087	5.709	1.339-2.323	0-5	1.260	1.750		HDP-12		
1870 00416105	CAT40 -SDM16 -105	3.5-16.0	4.134	2.756	1.575-1.969	0-6	1.417	1.750	1.3	HDP-16	FDC-16	S-4L
1870 00416120	-120	3.5-16.0	4.724	3.346	1.575-2.559	0-6	1.417	1.750	1.4	HDP-16		
1870 00416135	-135	3.5-16.0	5.315	3.937	1.575-2.559	0-6	1.417	1.750	1.5	HDP-16		
—	-150 (*1)	3.5-16.0	5.906	4.528	1.575-2.559	0-6	1.417	1.750		HDP-16		
—	-180 (*1)	3.5-16.0	7.087	5.709	1.575-2.559	0-6	1.417	1.750		HDP-16		
1870 00422120	CAT40 -SDM22 -120	3.5-22.0	4.724	3.346	1.890-2.283	0-8	1.811	1.750	1.6	HDP-22	FDC-22	S-5L
1870 00422135	-135	3.5-22.0	5.315	3.937	1.890-2.874	0-8	1.811	1.750	1.7	HDP-22		
1870 00422150	-150	3.5-22.0	5.906	4.528	1.890-2.874	0-8	1.811	1.750	1.9	HDP-22		
—	-180 (*1)	3.5-22.0	7.087	5.709	1.890-2.874	0-8	1.811	1.750		HDP-22		
—	CAT50 -SDM07 -90 (*1)	0.5-7.0	3.543	2.165	1.142-1.535	0-4	0.906	2.750		HDP-07A		
1870 00507105	-105	0.5-7.0	4.134	2.756	1.142-2.126	0-4	0.906	2.750		HDP-07A	FDC-07	S-0
1870 00507120	-120	0.5-7.0	4.724	3.346	1.142-2.126	0-4	0.906	2.750		HDP-07A		
1870 00507135	-135	0.5-7.0	5.315	3.937	1.142-2.126	0-4	0.906	2.750		HDP-07A		
—	-150 (*1)	0.5-7.0	5.906	4.528	1.142-2.126	0-4	0.906	2.750		HDP-07A		
—	-165 (*1)	0.5-7.0	6.496	5.118	1.142-2.126	0-4	0.906	2.750		HDP-07A		

1. Collet and spanner are sold separately.
2. l is the dimension between the cap end and the preset screw top end.
3. See P.499 for standard Tightening Torque.
4. (*1) : SEMI-STANDARD

Code	Model	d (mm)	L	L2	ℓ	B (mm)	D1	D2	kg	Nut	Collet	Spanner
—	CAT50 -SDM09 -90 (*1)	2.5-9.0	3.543	2.165	1.102-1.496	0-4	1.024	2.750		HDP-09	FDC-09	S-1L
1870 00509105	-105	2.5-9.0	4.134	2.756	1.102-2.087	0-4	1.024	2.750		HDP-09		
1870 00509120	-120	2.5-9.0	4.724	3.346	1.102-2.087	0-4	1.024	2.750		HDP-09		
1870 00509135	-135	2.5-9.0	5.315	3.937	1.102-2.087	0-4	1.024	2.750		HDP-09		
—	-150 (*1)	2.5-9.0	5.906	4.528	1.102-2.087	0-4	1.024	2.750		HDP-09		
—	-180 (*1)	2.5-9.0	7.087	5.709	1.102-2.087	0-4	1.024	2.750		HDP-09		
1870 00512105	CAT50 -SDM12 -105	2.5-12.0	4.134	2.756	1.339-1.732	0-5	1.260	2.750		HDP-12	FDC-12	S-3L
1870 00512120	-120	2.5-12.0	4.724	3.346	1.339-2.323	0-5	1.260	2.750		HDP-12		
1870 00512135	-135	2.5-12.0	5.315	3.937	1.339-2.323	0-5	1.260	2.750		HDP-12		
—	-150 (*1)	2.5-12.0	5.906	4.528	1.339-2.323	0-5	1.260	2.750		HDP-12		
—	-180 (*1)	2.5-12.0	7.087	5.709	1.339-2.323	0-5	1.260	2.750		HDP-12		
1870 00516105	CAT50 -SDM16 -105	3.5-16.0	4.134	2.756	1.575-1.969	0-6	1.417	2.750		HDP-16	FDC-16	S-4L
1870 00516120	-120	3.5-16.0	4.724	3.346	1.575-2.559	0-6	1.417	2.750		HDP-16		
1870 00516135	-135	3.5-16.0	5.315	3.937	1.575-2.559	0-6	1.417	2.750		HDP-16		
1870 00516150	-150	3.5-16.0	5.906	4.528	1.575-2.559	0-6	1.417	2.750		HDP-16		
—	-180 (*1)	3.5-16.0	7.087	5.709	1.575-2.559	0-6	1.417	2.750		HDP-16		
1870 00522120	CAT50 -SDM22 -120	3.5-22.0	4.724	3.346	1.890-2.283	0-8	1.811	2.750		HDP-22	FDC-22	S-5L
1870 00522135	-135	3.5-22.0	5.315	3.937	1.890-2.874	0-8	1.811	2.750		HDP-22		
1870 00522150	-150	3.5-22.0	5.906	4.528	1.890-2.874	0-8	1.811	2.750		HDP-22		
1870 00522180	-180	3.5-22.0	7.087	5.709	1.890-2.874	0-8	1.811	2.750		HDP-22		
—	-210 (*1)	3.5-22.0	8.268	6.89	1.890-2.874	0-8	1.811	2.750		HDP-22		

1. Collet and spanner are sold separately.
2. ℓ is the dimension between the cap end and the preset screw top end.
3. See P.499 for standard Tightening Torque.
4. (*1) : SEMI-STANDARD



Ordering Example

CAT40 - SDM 12 - 90
 Shank size Max. collet I.D. Projection length (L)

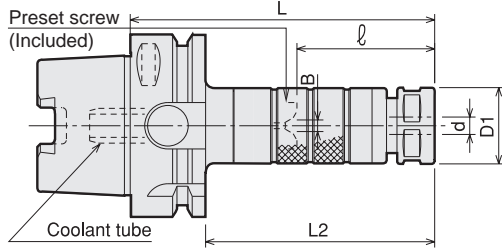
- BT
- CAT
- AHO
- HSK-A/E/F/C
- HSK-T
- UTS
- Specialized Machine
- Related Equipment
- Bush & Chamfering Drill
- Milling Chuck
- Collet Holder
- "R" Zero Holder
- Hydraulic Chuck
- Shrink Fit
- Tapping Chuck
- Arbors
- Function Holder
- Retention Stud
- Tool Shank Dimensions

SDM

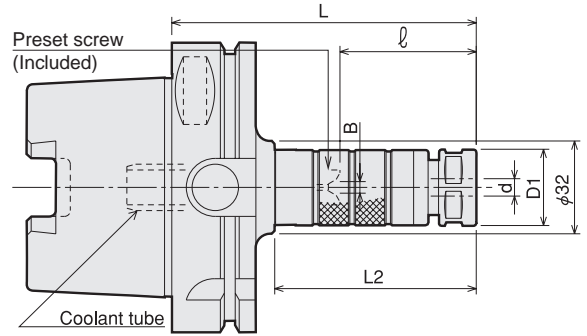
Drill Holder With Easy Tool Length Adjustment

● Projection length of the cutting tool can be adjusted by simply turning circumference of the holder.

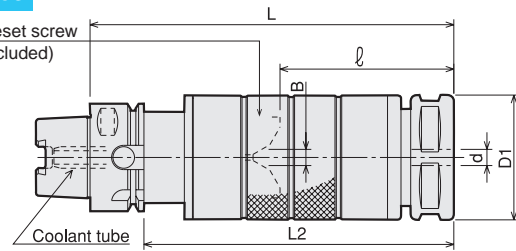
Type1



Type2



Type3



● Coolant tube is included.

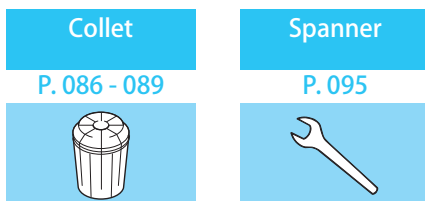
Unit : Metric

Code	Model	Type	d	L	l	L2	B	D1	Nut	Collet	Spanner
5710 13007075	HSK40A -SDM07 -75	1	0.5 ~ 7.0	75	29 ~ 39	55	0 ~ 4	23	HDP-07A	FDC-07	S-0
5710 13007090	-90	1	0.5 ~ 7.0	90	29 ~ 54	70	0 ~ 4	23	HDP-07A		
5710 13007105	-105	1	0.5 ~ 7.0	105	29 ~ 54	85	0 ~ 4	23	HDP-07A		
5710 13007120	-120	1	0.5 ~ 7.0	120	29 ~ 54	100	0 ~ 4	23	HDP-07A		
5710 13009075	HSK40A -SDM09 -75	1	2.5 ~ 9.0	75	28 ~ 38	55	0 ~ 4	26	HDP-09	FDC-09	S-1L
5710 13009090	-90	1	2.5 ~ 9.0	90	28 ~ 53	70	0 ~ 4	26	HDP-09		
5710 13009105	-105	1	2.5 ~ 9.0	105	28 ~ 53	85	0 ~ 4	26	HDP-09		
5710 13009120	-120	1	2.5 ~ 9.0	120	28 ~ 53	100	0 ~ 4	26	HDP-09		
5710 13012090	HSK40A -SDM12 -90	1	2.5 ~ 12.0	90	34 ~ 44	70	0 ~ 5	32	HDP-12	FDC-12	S-3L
5710 13012105	-105	1	2.5 ~ 12.0	105	34 ~ 59	85	0 ~ 5	32	HDP-12		
5710 13012120	-120	1	2.5 ~ 12.0	120	34 ~ 59	100	0 ~ 5	32	HDP-12		
5710 13012135	-135	1	2.5 ~ 12.0	135	34 ~ 59	115	0 ~ 5	32	HDP-12		
5710 13012150	-150	1	2.5 ~ 12.0	150	34 ~ 59	130	0 ~ 5	32	HDP-12		
5710 13016120	HSK40A -SDM16 -120	3	3.5 ~ 16.0	120	40 ~ 50	100	0 ~ 6	36	HDP-16	FDC-16	S-4L
5710 13016135	-135	3	3.5 ~ 16.0	135	40 ~ 65	115	0 ~ 6	36	HDP-16		
5710 13016150	-150	3	3.5 ~ 16.0	150	40 ~ 65	130	0 ~ 6	36	HDP-16		
5710 13022120	HSK40A -SDM22 -120	3	3.5 ~ 22.0	120	48 ~ 58	100	0 ~ 8	46	HDP-22	FDC-22	S-5L
5710 13022135	-135	3	3.5 ~ 22.0	135	48 ~ 73	115	0 ~ 8	46	HDP-22		
5710 13022150	-150	3	3.5 ~ 22.0	150	48 ~ 73	130	0 ~ 8	46	HDP-22		
5710 14007090	HSK50A -SDM07 -90	1	0.5 ~ 7.0	90	29 ~ 39	64	0 ~ 4	23	HDP-07A	FDC-07	S-0
5710 14007105	-105	1	0.5 ~ 7.0	105	29 ~ 54	79	0 ~ 4	23	HDP-07A		
5710 14007120	-120	1	0.5 ~ 7.0	120	29 ~ 54	94	0 ~ 4	23	HDP-07A		
5710 14009090	HSK50A -SDM09 -90	1	2.5 ~ 9.0	90	28 ~ 38	64	0 ~ 4	26	HDP-09	FDC-09	S-1L
5710 14009105	-105	1	2.5 ~ 9.0	105	28 ~ 53	79	0 ~ 4	26	HDP-09		
5710 14009120	-120	1	2.5 ~ 9.0	120	28 ~ 53	94	0 ~ 4	26	HDP-09		
5710 14012090	HSK50A -SDM12 -90	1	2.5 ~ 12.0	90	34 ~ 44	64	0 ~ 5	32	HDP-12		
5710 14012105	-105	1	2.5 ~ 12.0	105	34 ~ 59	79	0 ~ 5	32	HDP-12	FDC-12	S-3L
5710 14012120	-120	1	2.5 ~ 12.0	120	34 ~ 59	94	0 ~ 5	32	HDP-12		
5710 14012135	-135	1	2.5 ~ 12.0	135	34 ~ 59	109	0 ~ 5	32	HDP-12		
5710 14012150	-150	1	2.5 ~ 12.0	150	34 ~ 59	124	0 ~ 5	32	HDP-12		
5710 14016105	HSK50A -SDM16 -105	1	3.5 ~ 16.0	105	40 ~ 50	79	0 ~ 6	36	HDP-16		
5710 14016120	-120	1	3.5 ~ 16.0	120	40 ~ 65	94	0 ~ 6	36	HDP-16	FDC-16	S-4L
5710 14016135	-135	1	3.5 ~ 16.0	135	40 ~ 65	109	0 ~ 6	36	HDP-16		
5710 14016150	-150	1	3.5 ~ 16.0	150	40 ~ 65	124	0 ~ 6	36	HDP-16		
5710 14022135	HSK50A -SDM22 -135	3	3.5 ~ 22.0	135	48 ~ 58	109	0 ~ 8	46	HDP-22	FDC-22	S-5L
5710 14022150	-150	3	3.5 ~ 22.0	150	48 ~ 73	124	0 ~ 8	46	HDP-22		

Unit : Metric

Code	Model	Type	d	L	ℓ	L2	B	D1	Nut	Collet	Spanner
5710 15007090	HSK63A -SDM07-90	1	0.5 ~ 7.0	90	29 ~ 39	64	0 ~ 4	23	HDP-07A	FDC-07	S-0
5710 15007105	-105	1	0.5 ~ 7.0	105	29 ~ 54	79	0 ~ 4	23	HDP-07A		
5710 15007120	-120	1	0.5 ~ 7.0	120	29 ~ 54	94	0 ~ 4	23	HDP-07A		
5710 15007135	-135	1	0.5 ~ 7.0	135	29 ~ 54	109	0 ~ 4	23	HDP-07A		
5710 15007150	-150	1	0.5 ~ 7.0	150	29 ~ 54	124	0 ~ 4	23	HDP-07A		
5710 15009090	HSK63A -SDM09-90	1	2.5 ~ 9.0	90	28 ~ 38	64	0 ~ 4	26	HDP-09	FDC-09	S-1L
5710 15009105	-105	1	2.5 ~ 9.0	105	28 ~ 53	79	0 ~ 4	26	HDP-09		
5710 15009120	-120	1	2.5 ~ 9.0	120	28 ~ 53	94	0 ~ 4	26	HDP-09		
5710 15009135	-135	1	2.5 ~ 9.0	135	28 ~ 53	109	0 ~ 4	26	HDP-09		
5710 15009150	-150	1	2.5 ~ 9.0	150	28 ~ 53	124	0 ~ 4	26	HDP-09		
5710 15009180	-180	1	2.5 ~ 9.0	180	28 ~ 53	154	0 ~ 4	26	HDP-09		
5710 15012090	HSK63A -SDM12-90	1	2.5 ~ 12.0	90	34 ~ 44	64	0 ~ 5	32	HDP-12	FDC-12	S-3L
5710 15012105	-105	1	2.5 ~ 12.0	105	34 ~ 59	79	0 ~ 5	32	HDP-12		
5710 15012120	-120	1	2.5 ~ 12.0	120	34 ~ 59	94	0 ~ 5	32	HDP-12		
5710 15012135	-135	1	2.5 ~ 12.0	135	34 ~ 59	109	0 ~ 5	32	HDP-12		
5710 15012150	-150	1	2.5 ~ 12.0	150	34 ~ 59	124	0 ~ 5	32	HDP-12		
5710 15012180	-180	1	2.5 ~ 12.0	180	34 ~ 59	154	0 ~ 5	32	HDP-12		
5710 15016105	HSK63A -SDM16-105	1	3.5 ~ 16.0	105	40 ~ 50	79	0 ~ 6	36	HDP-16	FDC-16	S-4L
5710 15016120	-120	1	3.5 ~ 16.0	120	40 ~ 65	94	0 ~ 6	36	HDP-16		
5710 15016135	-135	1	3.5 ~ 16.0	135	40 ~ 65	109	0 ~ 6	36	HDP-16		
5710 15016150	-150	1	3.5 ~ 16.0	150	40 ~ 65	124	0 ~ 6	36	HDP-16		
5710 15016180	-180	1	3.5 ~ 16.0	180	40 ~ 65	154	0 ~ 6	36	HDP-16		
5710 15022120	HSK63A -SDM22-120	1	3.5 ~ 22.0	120	48 ~ 58	94	0 ~ 8	46	HDP-22	FDC-22	S-5L
5710 15022135	-135	1	3.5 ~ 22.0	135	48 ~ 73	109	0 ~ 8	46	HDP-22		
5710 15022150	-150	1	3.5 ~ 22.0	150	48 ~ 73	124	0 ~ 8	46	HDP-22		
5710 15022180	-180	1	3.5 ~ 22.0	180	48 ~ 73	154	0 ~ 8	46	HDP-22		
5710 17007090	HSK100A -SDM07-90	2	0.5 ~ 7.0	90	29 ~ 39	55	0 ~ 4	23	HDP-07A		
5710 17007105	-105	2	0.5 ~ 7.0	105	29 ~ 54	70	0 ~ 4	23	HDP-07A		
5710 17007120	-120	2	0.5 ~ 7.0	120	29 ~ 54	81	0 ~ 4	23	HDP-07A		
5710 17007135	-135	2	0.5 ~ 7.0	135	29 ~ 54	96	0 ~ 4	23	HDP-07A		
5710 17007150	-150	2	0.5 ~ 7.0	150	29 ~ 54	111	0 ~ 4	23	HDP-07A		
5710 17007165	-165	2	0.5 ~ 7.0	165	29 ~ 54	126	0 ~ 4	23	HDP-07A		
5710 17009090	HSK100A -SDM09-90	2	2.5 ~ 9.0	90	28 ~ 38	55	0 ~ 4	26	HDP-09	FDC-09	S-1L
5710 17009105	-105	2	2.5 ~ 9.0	105	28 ~ 53	70	0 ~ 4	26	HDP-09		
5710 17009120	-120	2	2.5 ~ 9.0	120	28 ~ 53	81	0 ~ 4	26	HDP-09		
5710 17009135	-135	2	2.5 ~ 9.0	135	28 ~ 53	96	0 ~ 4	26	HDP-09		
5710 17009150	-150	2	2.5 ~ 9.0	150	28 ~ 53	111	0 ~ 4	26	HDP-09		
5710 17009180	-180	2	2.5 ~ 9.0	180	28 ~ 53	141	0 ~ 4	26	HDP-09		
5710 17012105	HSK100A -SDM12-105	1	2.5 ~ 12.0	105	34 ~ 44	76	0 ~ 5	32	HDP-12	FDC-12	S-3L
5710 17012120	-120	1	2.5 ~ 12.0	120	34 ~ 59	91	0 ~ 5	32	HDP-12		
5710 17012135	-135	1	2.5 ~ 12.0	135	34 ~ 59	106	0 ~ 5	32	HDP-12		
5710 17012150	-150	1	2.5 ~ 12.0	150	34 ~ 59	121	0 ~ 5	32	HDP-12		
5710 17012180	-180	1	2.5 ~ 12.0	180	34 ~ 59	151	0 ~ 5	32	HDP-12		
5710 17016105	HSK100A -SDM16-105	1	3.5 ~ 16.0	105	40 ~ 50	76	0 ~ 6	36	HDP-16	FDC-16	S-4L
5710 17016120	-120	1	3.5 ~ 16.0	120	40 ~ 65	91	0 ~ 6	36	HDP-16		
5710 17016135	-135	1	3.5 ~ 16.0	135	40 ~ 65	106	0 ~ 6	36	HDP-16		
5710 17016150	-150	1	3.5 ~ 16.0	150	40 ~ 65	121	0 ~ 6	36	HDP-16		
5710 17016180	-180	1	3.5 ~ 16.0	180	40 ~ 65	151	0 ~ 6	36	HDP-16		
5710 17022120	HSK100A -SDM22-120	1	3.5 ~ 22.0	120	48 ~ 58	91	0 ~ 8	46	HDP-22	FDC-22	S-5L
5710 17022135	-135	1	3.5 ~ 22.0	135	48 ~ 73	106	0 ~ 8	46	HDP-22		
5710 17022150	-150	1	3.5 ~ 22.0	150	48 ~ 73	121	0 ~ 8	46	HDP-22		
5710 17022180	-180	1	3.5 ~ 22.0	180	48 ~ 73	151	0 ~ 8	46	HDP-22		
5710 17022210	-210	1	3.5 ~ 22.0	210	48 ~ 73	181	0 ~ 8	46	HDP-22		

1. Collet and spanner are sold separately.
2. ℓ is the dimension between the cap end and the preset screw top end.
3. See P.499 for standard Tightening Torque.



Ordering Example

HSK50A - SDM 12 - 90

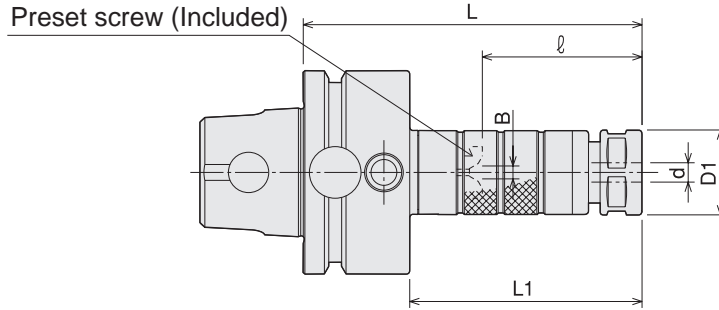
Shank size Max. collet I.D. Projection length (L)

- BT
- CAT
- AHO
- HSK-A/E/F/C
- HSK-T
- UTS
- Specialized Machine
- Related Equipment
- Bush & Chamfering Drill
- Milling Chuck
- Collet Holder
- "R" Zero Holder
- Hydraulic Chuck
- Shrink Fit
- Tapping Chuck
- Arbors
- Function Holder
- HSK-E
- HSK-F
- HSK-C
- Tool Shank Dimensions

SDM

Drill Holder With Easy Tool Length Adjustment

- Projection length of the cutting tool can be adjusted by simply turning circumference of the holder.



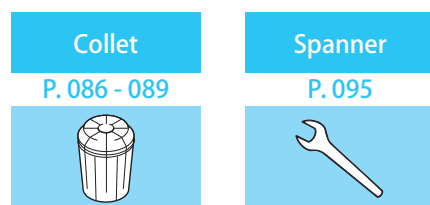
Unit : Metric

Code	Model	d	L	ℓ	L1	B	D1	Nut	Collet	Spanner
1380 01107090	UTS5040 -SDM07 -90-H	0.5 ~ 7.0	90	29 ~ 39	60	0 ~ 4	23	HDP-07A	FDC-07	S-0
1380 01107105	-105-H	0.5 ~ 7.0	105	29 ~ 54	75	0 ~ 4	23	HDP-07A		
1380 01107120	-120-H	0.5 ~ 7.0	120	29 ~ 54	90	0 ~ 4	23	HDP-07A		
1380 01109090	UTS5040 -SDM09 -90-H	2.5 ~ 9.0	90	28 ~ 38	60	0 ~ 4	26	HDP-09	FDC-09	S-1L
1380 01109105	-105-H	2.5 ~ 9.0	105	28 ~ 53	75	0 ~ 4	26	HDP-09		
1380 01109120	-120-H	2.5 ~ 9.0	120	28 ~ 53	90	0 ~ 4	26	HDP-09		
1380 01112105	UTS5040 -SDM12 -105-H	2.5 ~ 12.0	105	34 ~ 44	75	0 ~ 5	32	HDP-12	FDC-12	S-3L
1380 01112120	-120-H	2.5 ~ 12.0	120	34 ~ 59	90	0 ~ 5	32	HDP-12		
1380 01112135	-135-H	2.5 ~ 12.0	135	34 ~ 59	105	0 ~ 5	32	HDP-12		
1380 01112150	-150-H	2.5 ~ 12.0	150	34 ~ 59	120	0 ~ 5	32	HDP-12	FDC-16	S-4L
1380 01116105	UTS5040 -SDM16 -105-H	3.5 ~ 16.0	105	40 ~ 50	75	0 ~ 6	36	HDP-16		
1380 01116120	-120-H	3.5 ~ 16.0	120	40 ~ 65	90	0 ~ 6	36	HDP-16		
1380 01116135	-135-H	3.5 ~ 16.0	135	40 ~ 65	105	0 ~ 6	36	HDP-16	FDC-22	S-5L
1380 01116150	-150-H	3.5 ~ 16.0	150	40 ~ 65	120	0 ~ 6	36	HDP-16		
1380 01122120	UTS5040 -SDM22 -120-H	3.5 ~ 22.0	120	48 ~ 58	90	0 ~ 8	46	HDP-22		
1380 01122135	-135-H	3.5 ~ 22.0	135	48 ~ 73	105	0 ~ 8	46	HDP-22	FDC-22	S-5L
1380 01122150	-150-H	3.5 ~ 22.0	150	48 ~ 73	120	0 ~ 8	46	HDP-22		
1380 0 ※ 207090	UTS6350 -SDM07 -90	0.5 ~ 7.0	90	29 ~ 39	57	0 ~ 4	23	HDP-07A		
1380 0 ※ 207105	-105	0.5 ~ 7.0	105	29 ~ 54	72	0 ~ 4	23	HDP-07A		
1380 0 ※ 207120	-120	0.5 ~ 7.0	120	29 ~ 54	87	0 ~ 4	23	HDP-07A		
1380 0 ※ 207135	-135	0.5 ~ 7.0	135	29 ~ 54	102	0 ~ 4	23	HDP-07A	FDC-09	S-1L
1380 0 ※ 207150	-150	0.5 ~ 7.0	150	29 ~ 54	117	0 ~ 4	23	HDP-07A		
1380 0 ※ 209090	UTS6350 -SDM09 -90	2.5 ~ 9.0	90	28 ~ 38	57	0 ~ 4	26	HDP-09		
1380 0 ※ 209105	-105	2.5 ~ 9.0	105	28 ~ 53	72	0 ~ 4	26	HDP-09	FDC-09	S-1L
1380 0 ※ 209120	-120	2.5 ~ 9.0	120	28 ~ 53	87	0 ~ 4	26	HDP-09		
1380 0 ※ 209135	-135	2.5 ~ 9.0	135	28 ~ 53	102	0 ~ 4	26	HDP-09		
1380 0 ※ 209150	-150	2.5 ~ 9.0	150	28 ~ 53	117	0 ~ 4	26	HDP-09	FDC-12	S-3L
1380 0 ※ 209180	-180	2.5 ~ 9.0	180	28 ~ 53	147	0 ~ 4	26	HDP-09		
1380 0 ※ 212105	UTS6350 -SDM12 -105	2.5 ~ 12.0	105	34 ~ 44	72	0 ~ 5	32	HDP-12		
1380 0 ※ 212120	-120	2.5 ~ 12.0	120	34 ~ 59	87	0 ~ 5	32	HDP-12	FDC-12	S-3L
1380 0 ※ 212135	-135	2.5 ~ 12.0	135	34 ~ 59	102	0 ~ 5	32	HDP-12		
1380 0 ※ 212150	-150	2.5 ~ 12.0	150	34 ~ 59	117	0 ~ 5	32	HDP-12		
1380 0 ※ 212180	-180	2.5 ~ 12.0	180	34 ~ 59	147	0 ~ 5	32	HDP-12	FDC-16	S-4L
1380 0 ※ 216105	UTS6350 -SDM16 -105	3.5 ~ 16.0	105	40 ~ 50	72	0 ~ 6	36	HDP-16		
1380 0 ※ 216120	-120	3.5 ~ 16.0	120	40 ~ 65	87	0 ~ 6	36	HDP-16		
1380 0 ※ 216135	-135	3.5 ~ 16.0	135	40 ~ 65	102	0 ~ 6	36	HDP-16	FDC-16	S-4L
1380 0 ※ 216150	-150	3.5 ~ 16.0	150	40 ~ 65	117	0 ~ 6	36	HDP-16		
1380 0 ※ 216180	-180	3.5 ~ 16.0	180	40 ~ 65	147	0 ~ 6	36	HDP-16		
1380 0 ※ 222120	UTS6350 -SDM22 -120	3.5 ~ 22.0	120	48 ~ 58	87	0 ~ 8	46	HDP-22	FDC-22	S-5L
1380 0 ※ 222135	-135	3.5 ~ 22.0	135	48 ~ 73	102	0 ~ 8	46	HDP-22		
1380 0 ※ 222150	-150	3.5 ~ 22.0	150	48 ~ 73	117	0 ~ 8	46	HDP-22		
1380 0 ※ 222180	-180	3.5 ~ 22.0	180	48 ~ 73	147	0 ~ 8	46	HDP-22		

Code	Model	d	L	ℓ	L1	B	D1	Nut	Collet	Spanner
1380 0 ※ 307090	UTS10080 -SDM07 -90	0.5 ~ 7.0	90	29 ~ 39	56	0 ~ 4	23	HDP-07A	FDC-07	S-0
1380 0 ※ 307105	-105	0.5 ~ 7.0	105	29 ~ 54	71	0 ~ 4	23	HDP-07A		
1380 0 ※ 307120	-120	0.5 ~ 7.0	120	29 ~ 54	86	0 ~ 4	23	HDP-07A		
1380 0 ※ 307135	-135	0.5 ~ 7.0	135	29 ~ 54	101	0 ~ 4	23	HDP-07A		
1380 0 ※ 307150	-150	0.5 ~ 7.0	150	29 ~ 54	116	0 ~ 4	23	HDP-07A		
1380 0 ※ 307165	-165	0.5 ~ 7.0	165	29 ~ 54	131	0 ~ 4	23	HDP-07A		
1380 0 ※ 309090	UTS10080 -SDM09 -90	2.5 ~ 9.0	90	28 ~ 38	56	0 ~ 4	26	HDP-09	FDC-09	S-1L
1380 0 ※ 309105	-105	2.5 ~ 9.0	105	28 ~ 53	71	0 ~ 4	26	HDP-09		
1380 0 ※ 309120	-120	2.5 ~ 9.0	120	28 ~ 53	86	0 ~ 4	26	HDP-09		
1380 0 ※ 309135	-135	2.5 ~ 9.0	135	28 ~ 53	101	0 ~ 4	26	HDP-09		
1380 0 ※ 309150	-150	2.5 ~ 9.0	150	28 ~ 53	116	0 ~ 4	26	HDP-09		
1380 0 ※ 309180	-180	2.5 ~ 9.0	180	28 ~ 53	146	0 ~ 4	26	HDP-09		
1380 0 ※ 312105	UTS10080 -SDM12 -105	2.5 ~ 12.0	105	34 ~ 44	71	0 ~ 5	32	HDP-12	FDC-12	S-3L
1380 0 ※ 312120	-120	2.5 ~ 12.0	120	34 ~ 59	86	0 ~ 5	32	HDP-12		
1380 0 ※ 312135	-135	2.5 ~ 12.0	135	34 ~ 59	101	0 ~ 5	32	HDP-12		
1380 0 ※ 312150	-150	2.5 ~ 12.0	150	34 ~ 59	116	0 ~ 5	32	HDP-12		
1380 0 ※ 312180	-180	2.5 ~ 12.0	180	34 ~ 59	146	0 ~ 5	32	HDP-12		
1380 0 ※ 316105	UTS10080 -SDM16 -105	3.5 ~ 16.0	105	40 ~ 50	71	0 ~ 6	36	HDP-16		
1380 0 ※ 316120	-120	3.5 ~ 16.0	120	40 ~ 65	86	0 ~ 6	36	HDP-16		
1380 0 ※ 316135	-135	3.5 ~ 16.0	135	40 ~ 65	101	0 ~ 6	36	HDP-16		
1380 0 ※ 316150	-150	3.5 ~ 16.0	150	40 ~ 65	116	0 ~ 6	36	HDP-16		
1380 0 ※ 316180	-180	3.5 ~ 16.0	180	40 ~ 65	146	0 ~ 6	36	HDP-16		
1380 0 ※ 322120	UTS10080 -SDM22 -120	3.5 ~ 22.0	120	48 ~ 58	86	0 ~ 8	46	HDP-22	FDC-22	S-5L
1380 0 ※ 322135	-135	3.5 ~ 22.0	135	48 ~ 73	101	0 ~ 8	46	HDP-22		
1380 0 ※ 322150	-150	3.5 ~ 22.0	150	48 ~ 73	116	0 ~ 8	46	HDP-22		
1380 0 ※ 322180	-180	3.5 ~ 22.0	180	48 ~ 73	146	0 ~ 8	46	HDP-22		
1380 0 ※ 322210	-210	3.5 ~ 22.0	210	48 ~ 73	176	0 ~ 8	46	HDP-22		

When placing an order, please specify high or low pressure. For high pressure type, please add (-H) on end of the description.

1. Collet and spanner are sold separately.
2. ℓ is the dimension between the cap end and the preset screw top end.
3. UTS5040 is available in high pressure only.
4. See P.499 for standard Tightening Torque.



Ordering Example

Low pressure type

0 ~ 1.0MPa (UTS10080 : 0 ~ 2.0MPa)

UTS6350 - SDM 12 - 105
Shank size Max. collet I.D. Projection length (L)

Ordering Example

High pressure type

1.1 ~ 7.0MPa (UTS10080 : 2.1 ~ 7.0MPa)

UTS6350 - SDM 12 - 105 - H
Shank size Max. collet I.D. Projection length (L) High pressure type