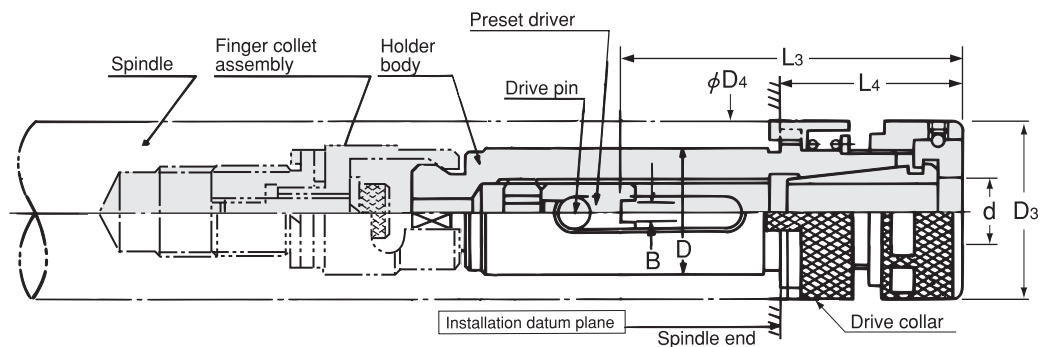


# KD

## Quick Change Stub Holder

- It covers a wide range of  $\phi 0.5$ -32mm cutter shanks.



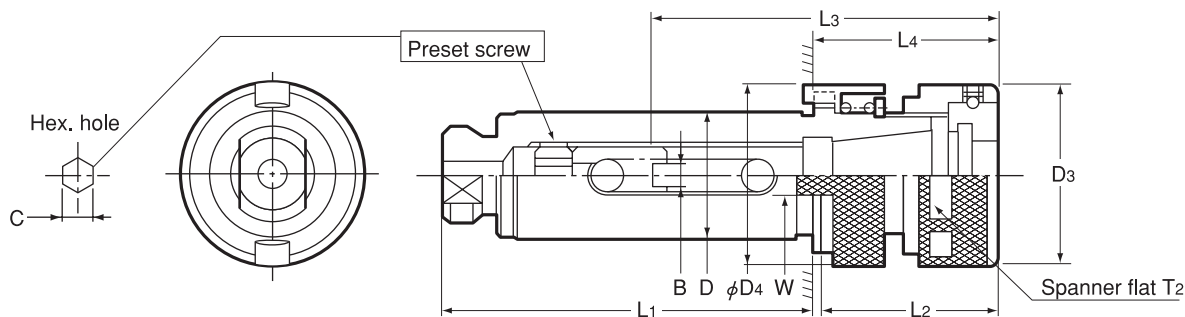
BT  
CAT  
AHO  
HSK-A/E/F/C  
HSK-T  
UTS  
Specialized Machine  
Related Equipment  
Bush & Chamfering Drill  
Stub Holder

Tapping Chuck  
Tap Adapter  
Adjustable Adapter  
Endmill Chuck  
Straight Drill Chuck  
Floating Holder

## KD Collet set



Code	Model	D	B	Chucking range $\phi$	Presetdriver	L3	D3	D4	L4 MAX	kg	Collet	Nut	Spanner	Finger collet assembly
0800 1420 □※※※	KD-14R2	14	0	0.5 ~ 7.0	KDS -007F	31 ~ 49	19	19.5	30	0.08	FDC-d07A	KDP-1414	Flat 17mm width	KDA-14
			2.4	3.1 ~ 5.0	KDS -2.407F	31 ~ 49								
			3	5.1 ~ 6.0	KDS -307F	31 ~ 49								
			4	6.1 ~ 7.0	KDS -407F	31 ~ 49								
0800 1600 □※※※	KD-16	16	0	2.8 ~ 9.0	KDS -009F	31 ~ 50	26	26	30	0.13	EDC-d19	KDP-1916	S-1L	KDA-16
			2.4	3.1 ~ 5.0	KDS -2.409F	31 ~ 50								
			3	5.1 ~ 6.0	KDS -309F	33 ~ 52								
			4	6.1 ~ 9.0	KDS -409F	34 ~ 52								
0800 1900 □※※※	KD-19	19	0	2.8 ~ 9.0	KDS -009F	31 ~ 54	26	28	30	0.2	EDC-d19	KDP-1916	S-1L	KDA-19
			2.4	3.1 ~ 5.0	KDS -2.409F	31 ~ 54								
0800 2000 □※※※	KD-20	20	3	5.1 ~ 6.0	KDS -309F	33 ~ 56	26	28	30	0.2	EDC-d19	KDP-1916	S-1L	KDA-20
			4	6.1 ~ 9.0	KDS -409F	34 ~ 56								
			0	2.8 ~ 12.0	KDS -012F	32 ~ 57								
0800 2200 □※※※	KD-22	22	2.4	3.1 ~ 5.0	KDS -2.412F	32 ~ 57	32	32	30	0.25	EDC-d24	KDP-2422	S-3L	KDA-22
			3	5.1 ~ 6.0	KDS -312F	32 ~ 57								
			4	6.1 ~ 9.0	KDS -412F	35 ~ 60								
0800 2400 □※※※	KD-24	24	5	9.1 ~ 12.0	KDS -512F	39 ~ 60	32	32	30	0.3	EDC-d24	KDP-2422	S-3L	KDA-24
			0	4.0 ~ 16.0	KDS -016F	41 ~ 60								
			2.4	4.0 ~ 5.0	KDS -2.416F	37 ~ 60								
0800 2500 □※※※	KD-25	25	3	5.1 ~ 6.0	KDS -316F	37 ~ 60	36	36	30	0.35	EDC-d28	KDP-2825	S-4L	KDA-25
0800 2600 □※※※	KD-26	26	4	6.1 ~ 9.0	KDS -416F	39 ~ 62								
0800 2800 □※※※	KD-28	28	5	9.1 ~ 12.0	KDS -516F	46 ~ 69	36	36	30	0.45	EDC-d28	KDP-2825	S-4L	KDA-28
0800 3000 □※※※	KD-30	30	6	12.1 ~ 16.0	KDS -616F	51 ~ 74								
0800 3200 □※※※	KD-32	32	0	4.0 ~ 22.0	KDS -022F	46 ~ 84	46	46	35	0.65	EDC-d36	KDP-3632	S-5L	KDA-32
			2.4	4.0 ~ 5.0	KDS -2.422F	42 ~ 84								
			3	5.1 ~ 6.0	KDS -322F	42 ~ 84								
0800 3500 □※※※	KD-35	35	4	6.1 ~ 9.0	KDS -422F	42 ~ 84	46	46	35	0.75	EDC-d36	KDP-3632	S-5L	KDA-35
			5	9.1 ~ 12.0	KDS -522F	45 ~ 87								
			6	12.1 ~ 16.0	KDS -622F	51 ~ 91								
0800 3600 □※※※	KD-36	36	8	16.1 ~ 22.0	KDS -822F	58 ~ 91	46	46	35	0.8	EDC-d36	KDP-3632	S-5L	KDA-36
			0	20.1 ~ 32.0	KDS -032F	60 ~ 106								
			8	20.1 ~ 22.0	KDS -832F	70 ~ 106								
0800 4810 □※※※	KD-48	48	12	22.1 ~ 32.0	KDS -1232F	78 ~ 106	65	66	40	1.7	FDC-d32B	HDP-32	S-6	KDA-48



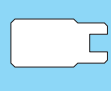
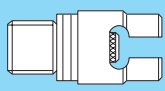


# KDB Holder body

Holder
+
Preset driver
+
Nut

Code	Model	B	L3	D <sup>0</sup> <sub>-0.01</sub>	D3	D4	L1	L2	L4 MAX	W	T2	C	kg	
0801 142 □□□ 07	<b>KDB -14R2</b>	/007F	0	31 ~ 49	14	19	19.5	48	17	30	8	17	4	0.07
		/2407F	2.4	31 ~ 49										
		/307F	3	31 ~ 49										
		/407F	4	31 ~ 49										
0801 160 □□□ 09	<b>KDB -16</b>	/009F	0	31 ~ 50	16	26	26	55.5	27.5	30	8	24	4	0.12
		/2409F	2.4	31 ~ 50										
		/309F	3	33 ~ 52										
		/409F	4	34 ~ 52										
0801 190 □□□ 09	<b>KDB -19</b>	/009F	0	31 ~ 54	19	26	28	60.5	27.5	30	9	24	4	0.18
/2409F	2.4	31 ~ 54												
0801 200 □□□ 09	<b>KDB -20</b>	/309F	3	33 ~ 56	20	26	28	60.5	27.5	30	9	24	4	0.18
		/409F	4	34 ~ 56										
		/012F	0	32 ~ 57										
0801 220 □□□ 12	<b>KDB -22</b>	/2412F	2.4	32 ~ 57	22	32	32	70	33	30	10	30	5	0.23
		/312F	3	32 ~ 57										
		/412F	4	35 ~ 60										
0801 240 □□□ 12	<b>KDB -24</b>	/512F	5	39 ~ 60	24	32	32	70	33	30	10	30	5	0.27
		/016F	0	41 ~ 60										
0801 250 □□□ 16	<b>KDB -25</b>	/2416F	2.4	37 ~ 60	25	36	36	83	43	30	10	33	6	0.3
0801 260 □□□ 16	<b>KDB -26</b>	/316F	3	37 ~ 60										
0801 280 □□□ 16	<b>KDB -28</b>	/416F	4	39 ~ 62										
		/516F	5	46 ~ 69										
0801 300 □□□ 16	<b>KDB -30</b>	/616F	6	51 ~ 74	30	36	38	83	43	30	10	33	6	0.45
		/022F	0	46 ~ 84										
0801 320 □□□ 22	<b>KDB -32</b>	/2422F	2.4	42 ~ 84	32	46	46	100	49	35	10	42	6	0.55
		/322F	3	42 ~ 84										
		/422F	4	42 ~ 84										
0801 350 □□□ 22	<b>KDB -35</b>	/522F	5	45 ~ 87	35	46	46	100	49	35	10	42	6	0.65
		/622F	6	51 ~ 91										
0801 360 □□□ 22	<b>KDB -36</b>	/822F	8	58 ~ 91	36	46	46	100	49	35	10	42	6	0.7
		/032F	0	60 ~ 106										
		0801 481 □□□ 32	<b>KDB -48</b>	/832F										
/1232F	12			78 ~ 106										

- Please select preset driver according to tang size of cutting tool. (Refer to P.438)
- Spanner and finger collet assembly is sold separately.
- Refer to P.441 for spindle dimension.

<b>Collet</b>	<b>Spanner</b>	<b>Preset driver</b>	<b>Finger collet assembly</b>
P. 444	P. 446	P. 438	P. 438
			

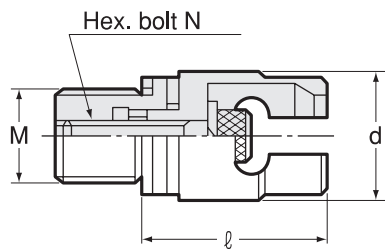
**KD (Collet set)**  
Ordering Example

**KD-16 / 009F / 7.0**  
Preset driver      Collet I.D.

**KDB (Holder body)**  
Ordering Example

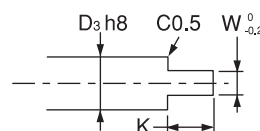
**KDB-16 / 309F**  
Preset driver

### Finger collet assembly (Spindle parts)



Model	Holder	d	l	M (P=1)	N
KDA -14	KD-14R2	14	27.3	M10	M5
KDA -16	KD-16	16	24.3	M12	M5
KDA -19	KD-19	19	29.3	M12	M5
KDA -20	KD-20	20	29.3	M12	M5
KDA -22	KD-22	22	27	M16	M6
KDA -24	KD-24	24	27	M16	M6
KDA -25	KD-25	25	29.5	M18	M8
KDA -26	KD-26	26	29.5	M18	M8
KDA -28	KD-28	28	29.5	M18	M8
KDA -30	KD-30	30	29.5	M18	M8
KDA -32	KD-32	32	30.5	M22	M8
KDA -35	KD-35	35	30.5	M22	M8
KDA -36	KD-36	36	30.5	M22	M8
KDA -48	KD-48	48	35.5	M22	M10

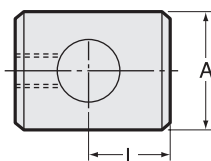
### Tang



D3		W	K
Exceeding	Below		
3.1	5	2.4	5
5.1	6	3	6
6.1	9	4	8
9.1	12	5	8
12.1	16	6	10
16.1	22	8	12
22.1	32	12	12

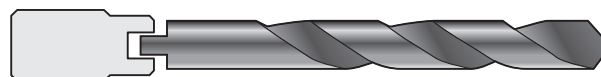
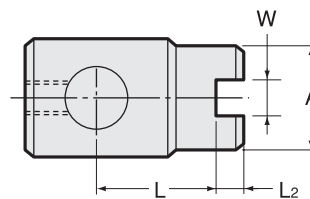
### Preset driver (For KD, KD-T)

Type1 without tang



(Drill without tang)

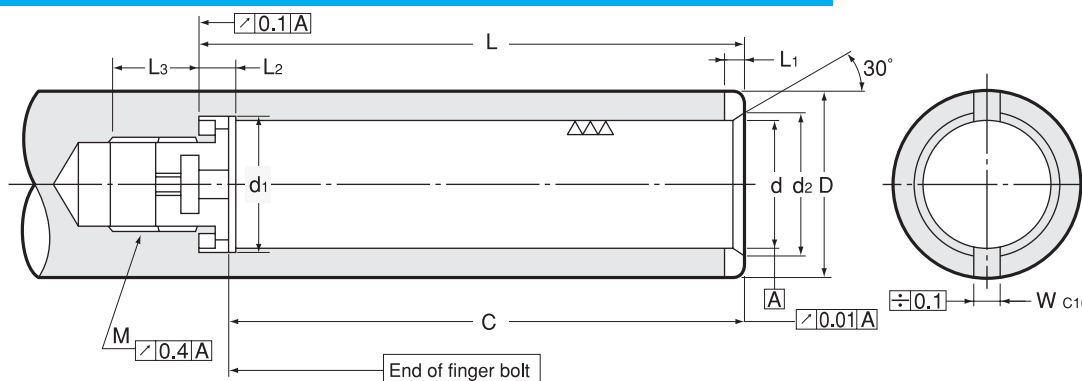
Type2 with tang



(Drill with tang)

Code	Model	Holder body	Type	W <sup>+0.4</sup> / <sub>+0.3</sub>	A	L	L2
0802 02000071	KDS -007F	KDB-14R2	1	—	7	5	—
0802 02024071	-2.407F		2	2.4	7	5	4
0802 02003071	-307F		2	3	7	5	4
0802 02004071	-407F		2	4	7	5	4
0802 02000091	KDS -009F	KDB-16,19,20	1	—	9	7.5	—
0802 02024091	-2.409F		2	2.4	7	7.5	3
0802 02003091	-309F		2	3	9	5.5	3
0802 02004091	-409F		2	4	9	5.5	3
0802 02000121	KDS -012F	KDB-22,24	1	—	10	12.5	—
0802 02024121	-2.412F		2	2.4	10.8	12.5	4
0802 02003121	-312F		2	3	10.8	12.5	4
0802 02004121	-412F		2	4	10.8	9.5	4
0802 02005121	-512F		2	5	10.8	9.5	4
0802 02000161	KDS -016F	KDB-25,26,28,30	1	—	7	21	—
0802 02024161	-2.416F		2	2.4	12.5	21	3
0802 02003161	-316F		2	3	12.5	21	3
0802 02004161	-416F		2	4	12.5	19	3
0802 02005161	-516F		2	5	12.5	12	4
0802 02006161	-616F		2	6	16	7	5
0802 02000221	KDS -022F	KDB-32,35,36	1	—	19	14	—
0802 02024221	-2.422F		2	2.4	19	14	3
0802 02003221	-322F		2	3	19	14	3
0802 02004221	-422F		2	4	19	14	3
0802 02005221	-522F		2	5	19	11	3
0802 02006221	-622F		2	6	19	7	3
0802 02008221	-822F		2	8	19	7	3
0802 02000321	KDS -032F	KDB-48	1	—	29	12	—
0802 02008321	-832F		2	8	29	12	8
0802 02012321	-1232F		2	12	29	12	8

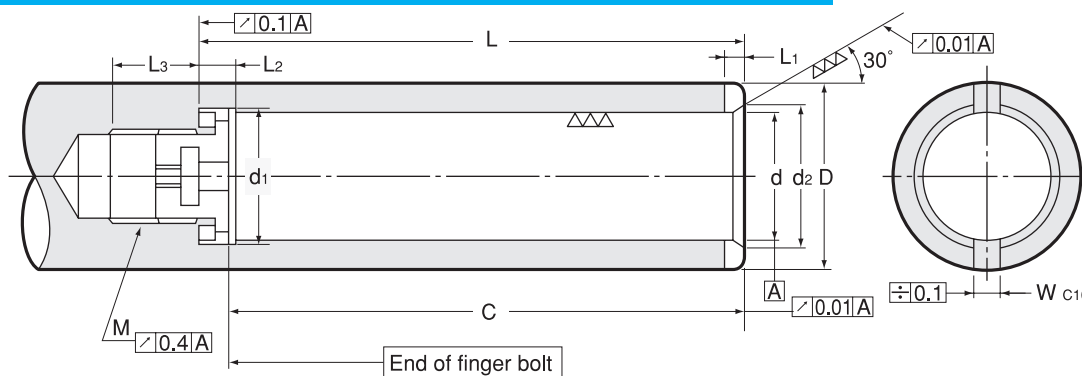
Dimension for KD spindle



Size	d <sub>G6</sub>	d <sub>2</sub>	D <sub>Min</sub>	d <sub>1</sub>	L ± 0.1	L <sub>1</sub> +0.2 / +0.1	L <sub>2</sub>	L <sub>3</sub>	W <sub>C10</sub>	M <sub>P=1</sub>
14	14	15.5	20	14.4	68	3	5	15	8	10
16	16	17.5	25	16.4	72.5	3	5	15	8	12
19	19	20.5	28	19.4	82.5	3	5	15	9	12
20	20	21.5	28	20.4	82.5	3	5	15	9	12
22	22	23.5	32	22.4	89.5	3	5	15	10	16
24	24	25.5	32	24.4	89.5	3	5	15	10	16
25	25	26.5	35	25.4	105	3	8	20	10	18
26	26	27.5	35	26.4	105	3	8	20	10	18
28	28	29.5	38	28.4	105	3	8	20	10	18
30	30	31.5	40	30.4	105	3	8	20	10	18
32	32	33.5	42	32.4	123	3	8	20	10	22
35	35	36.5	45	35.4	123	3	8	20	10	22
36	36	37.5	45	36.4	123	3	8	20	10	22
48	48	49.5	65	48.4	145	4.5	8	20	11	22

1. C dimension shows length from end of finger bolt to end of spindle. (refer to P. 443)
2. Don't carburize thread (M) portion.

Dimension for KD-T spindle



Size	d <sub>G6</sub>	d <sub>2</sub> +0.02 / -0.08	D <sub>Min</sub>	d <sub>1</sub>	L ± 0.1	L <sub>1</sub> +0.2 / +0.1	L <sub>2</sub>	L <sub>3</sub>	W <sub>C10</sub>	M <sub>P=1</sub>
14T	14	15.5	20	14.4	68	3	5	15	8	10
16T	16	17.5	25	16.4	72.5	3	5	15	8	12
19T	19	20.5	28	19.4	82.5	3	5	15	9	12
20T	20	21.5	28	20.4	82.5	3	5	15	9	12
22T	22	23.5	32	22.4	89.5	3	5	15	10	16
24T	24	25.5	32	24.4	89.5	3	5	15	10	16
25T	25	26.5	35	25.4	105	3	8	20	10	18
26T	26	27.5	35	26.4	105	3	8	20	10	18
28T	28	29.5	38	28.4	105	3	8	20	10	18
30T	30	31.5	40	30.4	105	3	8	20	10	18
32T	32	33.5	42	32.4	123	3	8	20	10	22
35T	35	36.5	45	35.4	123	3	8	20	10	22
36T	36	37.5	45	36.4	123	3	8	20	10	22
48T	48	49.5	65	48.4	145	4.5	8	20	11	22

1. KD model can be used for KD-T spindle.
2. C dimension shows length from end of finger bolt to end of spindle. (refer to P. 443)
3. In case of heat treatment on the spindle, don't carburize thread (M) portion.
4. For 30° taper gauge information, please contact NT.