

KH-E

Quick Change Stub Holder

BT

CAT

AHO

HSK-A/E/F/C

HSK-T

UTS

Specialized Machine

Related Equipment

Bush & Chamfering Drill

Stub Holder

Tapping Chuck

Tap Adapter

Adjustable Adapter

Endmill Chuck

Straight Drill Chuck

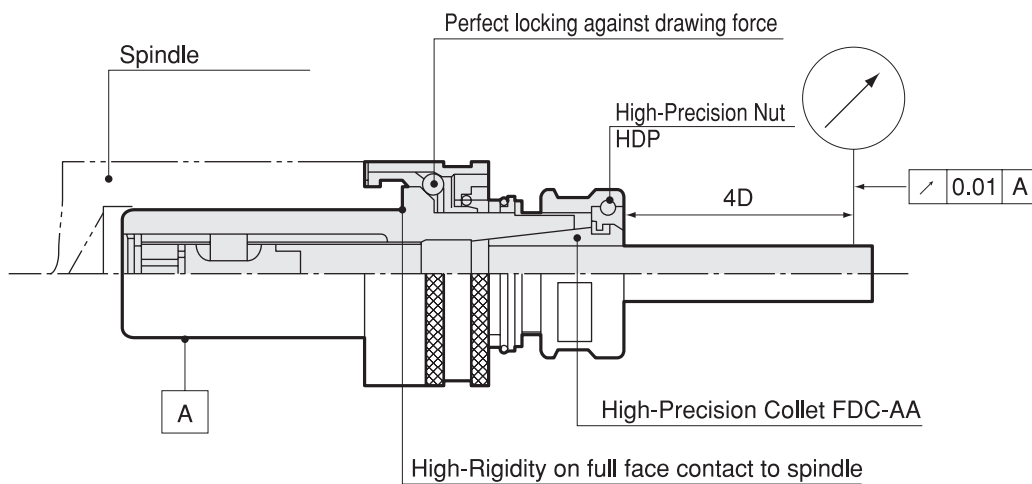
Floating Holder

Feature

Endmilling, which was not available before, becomes possible.

High Rigidity Owing to the locking function incorporated, the holder doesn't come off spindle even though drawing force works.

High Precision As the high precision collet is employed, the runout is available within 10 microns at $4 \times D$ ($4 \times$ tool shank dia. distance from the holder nose).

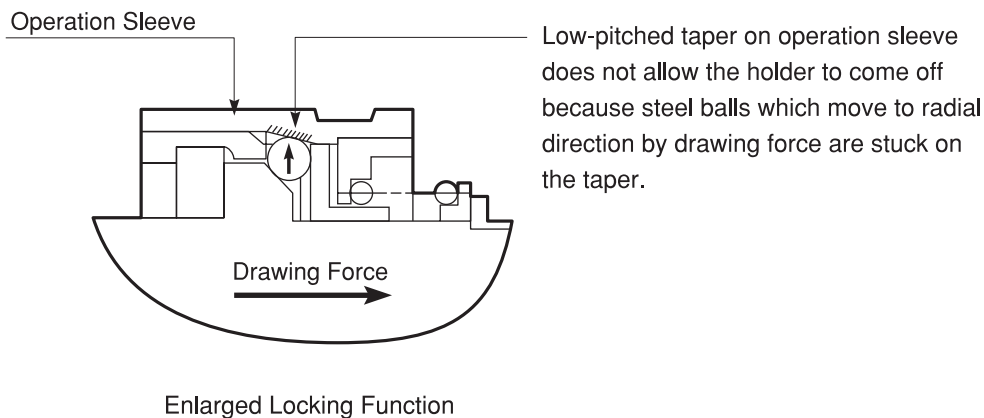


Significant Difference between KH-E and other stub holders

Strong chucking prevents pull out of cutting tool



Locking mechanism stops pulling force caused by spiral cutting tools such as end mill.

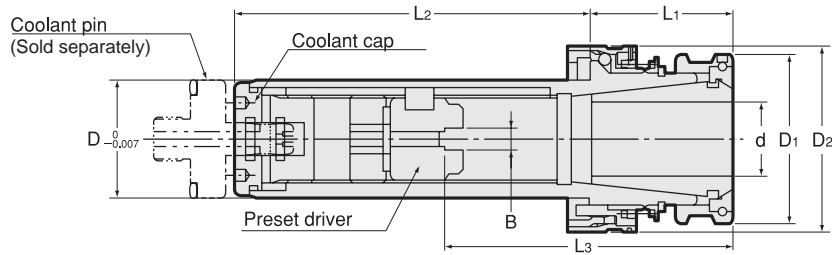


Enlarged Locking Function

Note ● For center-thru coolant feed, select KH-EC1 or KH-EC2 models on page

KH-EC1



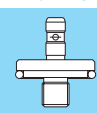
Quick Change Stub Holder (For High Coolant Pressure)



KHB-EC1 Holder body



Code	Model	B	Collet I.D. d	L3	D	D1	D2	L1	L2	kg	Max. Coolant	Coolant pin	Collet	
3055 14 ※※※ 000	KHB -14EC1	/00007	0	3.0 ~ 7.0	20 ~ 45									
		/02407	2.4	3.1 ~ 5.0	24 ~ 48	14	23	26.3	34	50	0.1	8MPa	KH-14EC-P	FDC-07-OH or C
		/03007	3.0	5.1 ~ 6.0	25 ~ 48									
		/04007	4.0	6.1 ~ 7.0	27 ~ 48									
3055 16 ※※※ 000	KHB -16EC1	/00009	0	3.0 ~ 9.0	29 ~ 47									
		/02409	2.4	3.1 ~ 5.0	32 ~ 50	16	26	32	35	55	0.2	8MPa	KH-16EC-P	FDC-09-OH or C
		/03009	3.0	5.1 ~ 6.0	34 ~ 52									
		/04009	4.0	6.1 ~ 9.0	34 ~ 52									
3055 19 ※※※ 000	KHB -19EC1	/00009	0	3.0 ~ 9.0	29 ~ 52									
		/02409	2.4	3.1 ~ 5.0	32 ~ 55	19	26	35	35	60	0.2	8MPa	KH-19EC-P	FDC-09-OH or C
3055 20 ※※※ 000	KHB -20EC1	/03009	3.0	5.1 ~ 6.0	34 ~ 57									
		/04009	4.0	6.1 ~ 9.0	34 ~ 57	20	26	35	35	60	0.2	8MPa	KH-20EC-P	FDC-09-OH or C
3055 22 ※※※ 000	KHB -22EC1	/00012	0	3.0 ~ 12	35 ~ 62									
		/02412	2.4	3.1 ~ 5.0	34 ~ 61	22	32	38	35	70	0.3	8MPa	KH-22EC-P	FDC-12-OH or C
3055 24 ※※※ 000	KHB -24EC1	/03012	3.0	5.1 ~ 6.0	35 ~ 61									
		/04012	4.0	6.1 ~ 9.0	37 ~ 64	24	32	40	35	70	0.4	8MPa	KH-24EC-P	FDC-12-OH or C
		/05012	5.0	9.1 ~ 12	37 ~ 64									
3055 25 ※※※ 000	KHB -25EC1	/00016	0	6.0 ~ 16	36 ~ 64 (69)	25	36	44	35	80	0.4	8MPa	KH-25EC-P	FDC-16-OH or C
3055 26 ※※※ 000	KHB -26EC1	/03016	3.0	6.0	40 ~ 67 (72)	26	36	44	35	80	0.4	8MPa	KH-26EC-P	FDC-16-OH or C
		/04016	4.0	6.1 ~ 9.0	42 ~ 68 (73)									
3055 28 ※※※ 000	KHB -28EC1	/05016	5.0	9.1 ~ 12	42 ~ 69 (74)	28	36	47	35	85	0.5	8MPa	KH-28EC-P	FDC-16-OH or C
		/06016	6.0	12.1 ~ 16	44 ~ 72 (77)	30	36	47	35	85	0.6	8MPa	KH-30EC-P	FDC-16-OH or C
3055 32 ※※※ 000	KHB -32EC1	/00022	0	6.0 ~ 22	43 ~ 79									
		/03022	3.0	6.0	47 ~ 83	32	46	51	40	100	0.7	8MPa	KH-32EC-P	FDC-22-OH or C
3055 35 ※※※ 000	KHB -35EC1	/04022	4.0	6.1 ~ 9.0	49 ~ 83									
		/05022	5.0	9.1 ~ 12	49 ~ 84	35	46	55	40	100	0.8	8MPa	KH-35EC-P	FDC-22-OH or C
3055 36 ※※※ 000	KHB -36EC1	/06022	6.0	12.1 ~ 16	54 ~ 90									
		/08022	8.0	16.1 ~ 22	54 ~ 90	36	46	55	40	100	0.9	6MPa	KH-36EC-P	FDC-22-OH or C

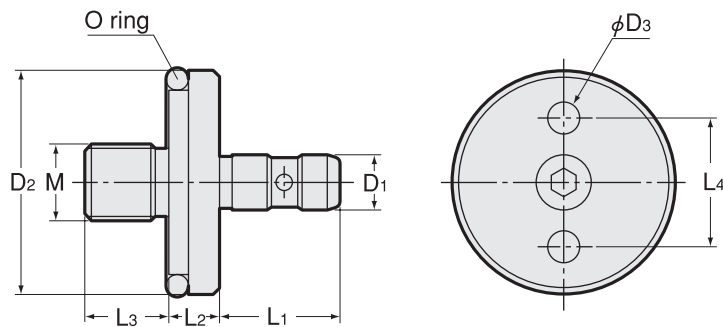
Collet P. 087-088 	Spanner P. 446 	Coolant Pin P. 426 
--	---	---

- L3 in bracket stands for KHB-28EC1 KHB-30EC1.
- Coolant pin, collet and spanner are sold separately.
- After removing coolant cap by adjustable pin wrench(sold separately), L3 dimension can be adjusted.
- Please select preset driver according to tang size of cutting tool. (Refer to P.433)
- Refer to P.439 for spindle dimension.

adjustable pin wrench (sold separately)		
Code	Model	Holder Size
0150 09300000	GWA1	KHB14 ~ KHB30
0150 09300040	GWA40	KHB32 ~ KHB36

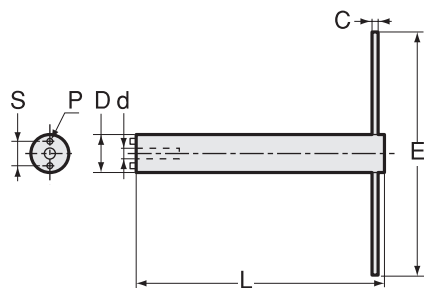
Ordering Example
KHB-20EC 1 / 03009
 High coolant pressure type Preset driver

Coolant pin



Code	Model	D1	D2	D3	L1	L2	L3	L4	kg	M	O ring
3055 00001402	KH14EC-P	5.7	13.9	3.5	15	8	13	9.6	0.01	M8 P=1	P-10A 1-B
3055 00001602	KH16EC-P	5.7	15.9	3.5	15	8	13	11	0.02	M8 P=1	P-12 1-B
3055 00001902	KH19EC-P	5.7	18.9	3.5	15	8	13	11	0.03	M8 P=1	P-15 1-B
3055 00002002	KH20EC-P	5.7	19.9	3.5	15	8	13	11	0.03	M8 P=1	P-16 1-B
3055 00002202	KH22EC-P	7.6	21.9	5.5	16.5	8	13	15.4	0.03	M10 P=1	P-18 1-B
3055 00002402	KH24EC-P	7.6	23.9	5.5	16.5	8	13	15.4	0.04	M10 P=1	P-20 1-B
3055 00002502	KH25EC-P	8.6	24.9	5.5	19	8	13	17	0.04	M12 P=1	P-21 1-B
3055 00002602	KH26EC-P	8.6	25.9	5.5	19	8	13	17	0.04	M12 P=1	P-22 1-B
3055 00002802	KH28EC-P	8.6	27.9	5.5	19	8	13	17	0.05	M12 P=1	P-22A 1-B
3055 00003002	KH30EC-P	8.6	29.9	5.5	19	8	13	17	0.05	M12 P=1	P-24 1-B
3055 00003202	KH32EC-P	8.6	31.9	5.5	19	8	13	20	0.06	M12 P=1	P-26 1-B
3055 00003502	KH35EC-P	8.6	34.9	5.5	19	8	13	20	0.06	M12 P=1	P-29 1-B
3055 00003602	KH36EC-P	8.6	35.9	5.5	19	8	13	20	0.06	M12 P=1	P-30 1-B

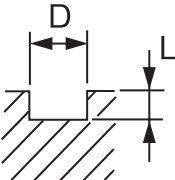
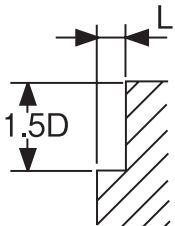
Coolant pin wrench



Model	Coolant pin	d	D	S	P	L	C	E	kg
HDMC -14G	KH14EC-P	6	13.5	9.6	3	120	6	120	
-16G	KH16EC-P KH19EC-P KH20EC-P	6	15.5	11	3	140	6	120	
-22G	KH22EC-P KH24EC-P	8	21.5	15.4	5	160	10	160	0.5
-25G	KH25EC-P KH26EC-P KH28EC-P KH30EC-P	9	24.5	17	5	180	10	160	0.7
-32G	KH32EC-P KH35EC-P KH36EC-P	9	31.5	20	5	200	12	200	1.4

Coolant pin wrench is necessary to replace coolant pin.

Stub Holder KH-E Endmilling Guidelines

Shape	Material	Cutter's dia	Rotation (min-1)	Feed (mm/min)	Max. cutting length L			
					KH16E	KH22E	KH26E	KH35E
	Aluminum (AC4C)	φ 6	4,000	387	1D	1D	—	—
		φ 12	3,150	400	—	1D	1D	—
		φ 16	2,000	345	—	—	0.75D	0.75D
		φ 20	1,000	315	—	—	—	0.5D
	Cast Iron (FC25)	φ 6	2,240	150	0.75D	1D	—	—
		φ 12	1,000	190	—	0.75D	0.75D	—
		φ 16	800	170	—	—	1D	0.75D
		φ 20	630	160	—	—	—	0.5D
	Steel (S45C)	φ 6	1,000	48	1D	1D	—	—
		φ 12	450	60	—	0.75D	1D	—
		φ 16	355	60	—	—	0.5D	0.5D
		φ 20	280	56	—	—	—	0.5D
	Aluminum (AC4C)	φ 6	9,000	1,000	0.3D	0.3D	—	—
		φ 12	4,000	1,180	—	0.3D	0.3D	—
		φ 16	3,150	1,060	—	—	0.3D	0.2D
		φ 20	2,500	1,000	—	—	—	0.1D
	Cast Iron (FC25)	φ 6	2,650	355	0.1D	0.1D	—	—
		φ 12	1,180	450	—	0.2D	0.2D	—
		φ 16	950	400	—	—	0.2D	0.1D
		φ 20	750	375	—	—	—	0.1D
	Steel (S45C)	φ 6	1,320	125	0.2D	0.2D	—	—
		φ 12	600	160	—	0.2D	0.2D	—
		φ 16	470	160	—	—	0.2D	0.1D
		φ 20	375	150	—	—	—	0.1D

BT

CAT

AHO

HSK-A/E/F/C

HSK-T

UTS

Specialized Machine

Related Equipment

Bush & Chamfering Drill

Stub Holder

Tapping Chuck

Tap Adapter

Adjustable Adapter

Endmill Chuck

Straight Drill Chuck

Floating Holder