

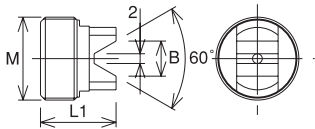
HDS, ES

Preset Screw

HDC-A, GDC-A, HDZ, GDZ

Unit : Metric

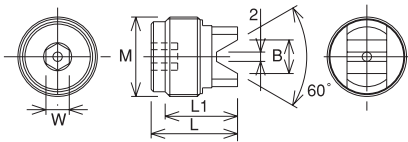
Standard



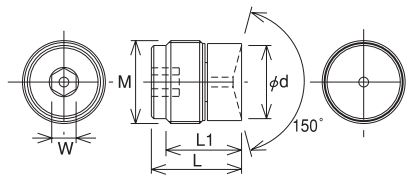
Code	Model	B	M	L1	Holder size
2545 00000007	HDS-07	5.5	M8 P=1	14	07
2545 00000009	HDS-09	5.5	M10 P=1	14	09
2545 00000012	HDS-12	7.2	M14 P=1	15.5	12
2545 00000016	HDS-16	7.2	M17 P=1	15.5	16
2545 00000022	HDS-22	9.5	M23 P=1	17.5	22

With hex. hole

Type1



Type2



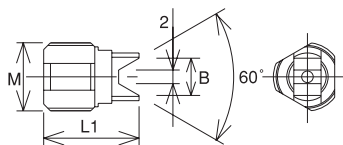
- In case using drill less than $\phi 2$ for models with *, length adjustment function does not work since drill goes into coolant hole.
- Max. adjustment range can be different from standard preset screw.

Unit : Metric

Code	Model	Type	W	B	ϕd	M	L	L1	Holder size
2545 30000007	HDS-07-3	1	3	5.5	-	M8 P=1	17	14	07
2545 40000007	HDS-07-4	1	4	5.5	-	M8 P=1	17	14	07
2545 30000009	HDS-09-3	1	3	5.5	-	M10 P=1	17	14	09
2545 40000009	HDS-09-4	1	4	5.5	-	M10 P=1	17	14	09
2545 50000009	HDS-09-5	1	5	5.5	-	M10 P=1	17	14	09
2545 30000012	HDS-12-3	1	3	7.2	-	M14 P=1	18.5	15.5	12
2545 40000012	HDS-12-4	1	4	7.2	-	M14 P=1	18.5	15.5	12
2545 50000012	HDS-12-5	1	5	7.2	-	M14 P=1	18.5	15.5	12
2545 30000016	HDS-16-3	1	3	7.2	-	M17 P=1	18.5	15.5	16
2545 40000016	HDS-16-4	1	4	7.2	-	M17 P=1	18.5	15.5	16
2545 50000016	HDS-16-5	1	5	7.2	-	M17 P=1	18.5	15.5	16
2545 30000022	HDS-22-3	1	3	9.5	-	M23 P=1	20.5	17.5	22
2545 40000022	HDS-22-4	1	4	9.5	-	M23 P=1	20.5	17.5	22
2545 50000022	HDS-22-5	1	5	9.5	-	M23 P=1	20.5	17.5	22
2545 31000007	HDS-07-3C *	2	3	-	6	M8 P=1	17	14	07
2545 41000007	HDS-07-4C *	2	4	-	6	M8 P=1	17	14	07
2545 31000009	HDS-09-3C	2	3	-	8	M10 P=1	17	14	09
2545 41000009	HDS-09-4C	2	4	-	8	M10 P=1	17	14	09
2545 51000009	HDS-09-5C	2	5	-	8	M10 P=1	17	14	09
2545 31000012	HDS-12-3C	2	3	-	12	M14 P=1	18.5	15.5	12
2545 41000012	HDS-12-4C	2	4	-	12	M14 P=1	18.5	15.5	12
2545 51000012	HDS-12-5C	2	5	-	12	M14 P=1	18.5	15.5	12
2545 31000016	HDS-16-3C	2	3	-	15	M17 P=1	18.5	15.5	16
2545 41000016	HDS-16-4C	2	4	-	15	M17 P=1	18.5	15.5	16
2545 51000016	HDS-16-5C	2	5	-	15	M17 P=1	18.5	15.5	16
2545 31000022	HDS-22-3C	2	3	-	21	M23 P=1	20.5	17.5	22
2545 41000022	HDS-22-4C	2	4	-	21	M23 P=1	20.5	17.5	22
2545 51000022	HDS-22-5C	2	5	-	21	M23 P=1	20.5	17.5	22

Unit : Metric

For semi-dry machining

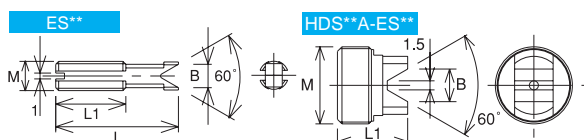


Code	Model	L	B	D	M	Holder size
3164 00000007	HDS-07-MS	14	5.5	7	M8 P=1	7
3164 00000009	HDS-09-MS	14	5.5	7	M10 P=1	9
3164 00000012	HDS-12-MS	15.5	7.2	12.8	M14 P=1	12
3164 00000016	HDS-16-MS	15.5	7.2	12.8	M17 P=1	16
3164 00000022	HDS-22-MS	17.5	9.5	18	M23 P=1	22

- For cutting tool with or without oil hole.
- Not applicable for cutting tools with less than $\phi 3$ shank diameter.

ERC, ERC-T, ERZ

Unit : Metric



Code	Model	B	M	L	L1	Holder size
2555 00000008	ES8	4	M5 P=0.8	21	12	ERC8
2555 00070011	HDS-07A-ES11	5.5	M8 P=1	-	14.5	ERC11S, ERC11
2555 00000016	ES16	9.8	M11 P=1	-	14.5	ERC16
2555 00120020	HDS12A-ES20	12.8	M14 P=1	-	16	ERC20
2555 00160025	HDS16A-ES25	15.8	M17 P=1	-	16	ERC25
2555 00220032	HDS22A-ES32	20	M23 P=1	-	18	ERC32
2555 00000040	ES40	24	M31 P=1	-	21.5	ERC40
2555 00000050	ES50	26	M36 P=1	-	23	ERC50