

Collet with stopper pin

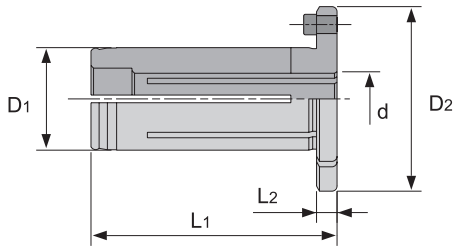
Minimum clamping length for PHS

Collet I.D. \square Metric	Collet I.D. \square Inch	Min. Clamping length Metric(Inch)
3, 4	1/8	25 (0.984)
5	3/16	30 (1.181)
6, 7	5/16	34 (1.339)
8, 9	7/16	38 (1.496)
10, 11	9/16, 1/4	42 (1.654)
12, 13, 14, 15, 16	3/8, 1/2, 5/8	50 (1.969)

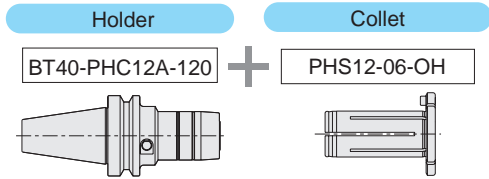
\square collet I.D. \square Model number

\square	1/8	3/16	1/4	5/16	3/8	7/16	1/2	9/16	5/8
\square	0125	0187	0250	0312	0375	0438	0500	0562	0625

For cutter with oil hole



Ordering Example To hold $\phi 6$ cutting tool with BT40-PHC12A-120



The collet with stopper pin can be used with PHC12A and PHC20A only.
The collet with stopper pin can be used with the length adjustment unit.

\square Metric , \square Metric

Unit : Metric

Model	D1	D2	L1	L2	\square
PHS12- \square -OH	12	26	48	4	3, 4, 5, 6, 7, 8, 9, 10
PHS20- \square -OH	20	36	48	4	3, 4, 5, 6, 7, 8, 9, 10 11, 12, 13, 14, 15, 16

\square Metric , \square Inch

Unit : Inch

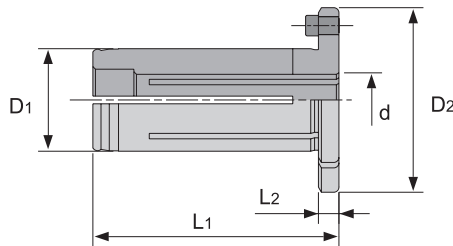
Model	D1	D2	L1	L2	\square
PHS12- \square -OH	0.472	1.024	1.890	0.158	1/8, 3/16, 1/4, 5/16, 3/8
PHS20- \square -OH	0.787	1.418	1.890	0.158	1/8, 3/16, 1/4, 5/16, 3/8, 7/16, 1/2, 9/16, 5/8

\square Inch , \square Inch

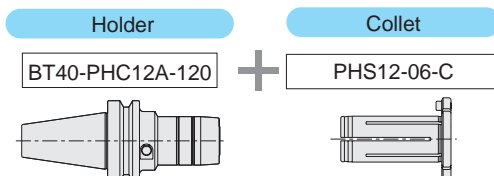
Unit : Inch

Model	D1	D2	L1	L2	\square
PHS0500- \square -OH	0.500	1.024	1.890	1.158	1/8, 3/16, 1/4, 5/16, 3/8
PHS0750- \square -OH	0.750	1.418	1.890	0.158	1/8, 3/16, 1/4, 5/16, 3/8, 7/16, 1/2, 9/16, 5/8

For collet through coolant



Ordering Example To hold $\phi 6$ cutting tool using collet through coolant feed with BT40-PHC12A-120



The collet with stopper pin can be used with PHC12A and PHC20A only.
The collet with stopper pin can be used with the length adjustment unit.

\square Metric , \square Metric

Unit : Metric

Model	D1	D2	L1	L2	\square
PHS12- \square -C	12	26	48	4	3, 4, 5, 6, 7, 8, 9
PHS20- \square -C	20	36	48	4	3, 4, 5, 6, 7, 8, 9, 10 11, 12, 13, 14, 15, 16

\square Metric , \square Inch

Unit : Inch

Model	D1	D2	L1	L2	\square
PHS12- \square -C	0.472	1.024	1.890	0.158	1/8, 3/16, 1/4, 5/16, 3/8
PHS20- \square -C	0.787	1.418	1.890	0.158	1/8, 3/16, 1/4, 5/16, 3/8, 7/16, 1/2, 9/16, 5/8

\square Inch , \square Inch

Unit : Inch

Model	D1	D2	L1	L2	\square
PHS0500- \square -C	0.500	1.024	1.890	1.158	1/8, 3/16, 1/4, 5/16, 3/8
PHS0750- \square -C	0.750	1.418	1.890	0.158	1/8, 3/16, 1/4, 5/16, 3/8, 7/16, 1/2, 9/16, 5/8